

2000 Plymouth Neon



2000...Think about it. A new millennium brings with it a feeling of change and hope for the future. You expect something new. Something exciting. Maybe even something a little surprising. Newly redesigned from the racy (but slightly familiar) front end, to its richer (more comfortable) interior fabric, to the daring (yet dignified) lines of its tail, Neon is a combination of style and substance that simply will not be ignored. Add to that the performance of its 132-horsepower 2.0-liter 16-valve four-cylinder engine and some available extras like ABS with traction control and a four-disc CD player, and you've got a serious touring sedan that will propel you into the 21st century. Surprised? You shouldn't be. Neon has always been a substantial car, built for the real world. And now you can drive one into the next millennium.

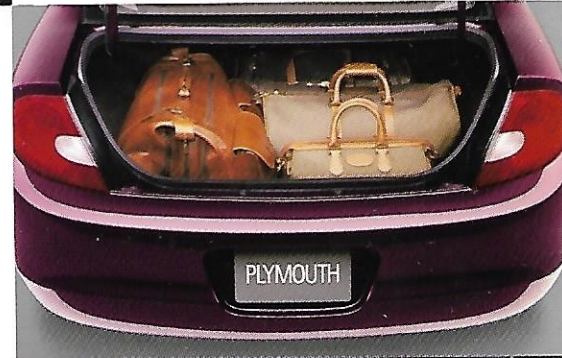


◀ **Sophisticated gauges.**

Neon LX includes a distinctive instrument cluster with a tachometer. The functional, yet stylish, gauge faces are white with black graphics and are bathed in a blue-green light for nighttime driving.

Wide open space. ▶

The dressed-up Neon trunk, measuring in at 13.1 cavernous cubic feet, is big enough to hold everything that five people could bring along and still have room to spare. The trunk lamp makes loading and unloading easy, and the available electric trunk release gives you convenient access to your parcels.



◀ **Driving tunes.**

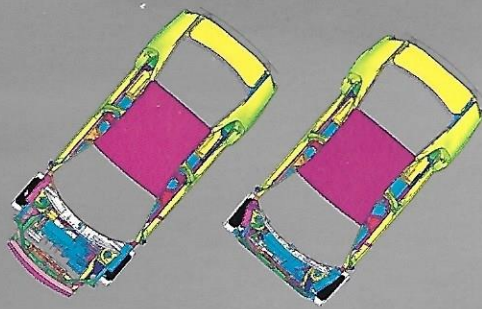
With an available instrument panel-mounted four-disc CD changer, Neon becomes a driveable jukebox. Rock, rap, classical, country or jazz, Neon's sound system, with six speakers, puts you in the front row.



Neon styling. ▶

Drawing from Neon's already good looks, Plymouth designers took it up a notch — restyling and retooling from the Plymouth logo on its racy front end to the capital letters that spell Neon on its raked rear.

All product illustrations, specifications and competitive comparisons are based upon current information at the time of publication approval. Although descriptions are believed to be correct, complete accuracy cannot be guaranteed. DaimlerChrysler Corporation reserves the right to make changes at any time, without notice or obligation, in prices, specifications, equipment, colors and materials, and to change or discontinue models. Some of the equipment shown or described throughout this catalog is available at extra cost. See your dealer for the latest information.



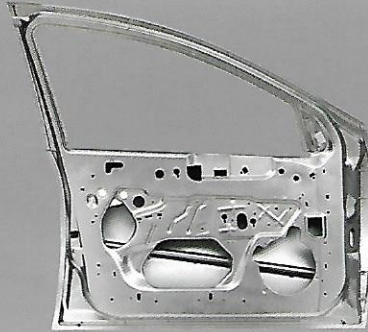
◀ **Zones of protection.**

Neon's improved front-end crumple zones help take the force out of a crash and distribute it more evenly by doing just what it says — crumpling — making that morning commute or trip to the grocery store just a little less worrisome.



Structural refinement. ▶

Neon's full-frame doors and substantially sealed body reduce wind noise, vibration and harshness. For added safety, beams in the front and rear doors and a full beam in the door sills help to protect passengers in a side-impact collision.



▲ **Remote keyless entry.**

The available Sentry Key™ Security Group gives you added protection by offering a vehicle security system, engine immobilizer and keyless entry with panic button. The panic button sounds an alarm when you press it, increasing your personal security and making a long walk in a dark parking lot seem shorter.



◀ **Hot mirrors.**

Sure Neon's dual-side mirrors are stylish, perfectly complementing its sophisticated new lines, but with the available power feature, they heat up to melt away ice and snow.

Plenty of horsepower. ▶

Neon's 2.0-liter 4-cylinder SOHC 16-valve power plant cranks out 132 horsepower at 5,600 rpm.



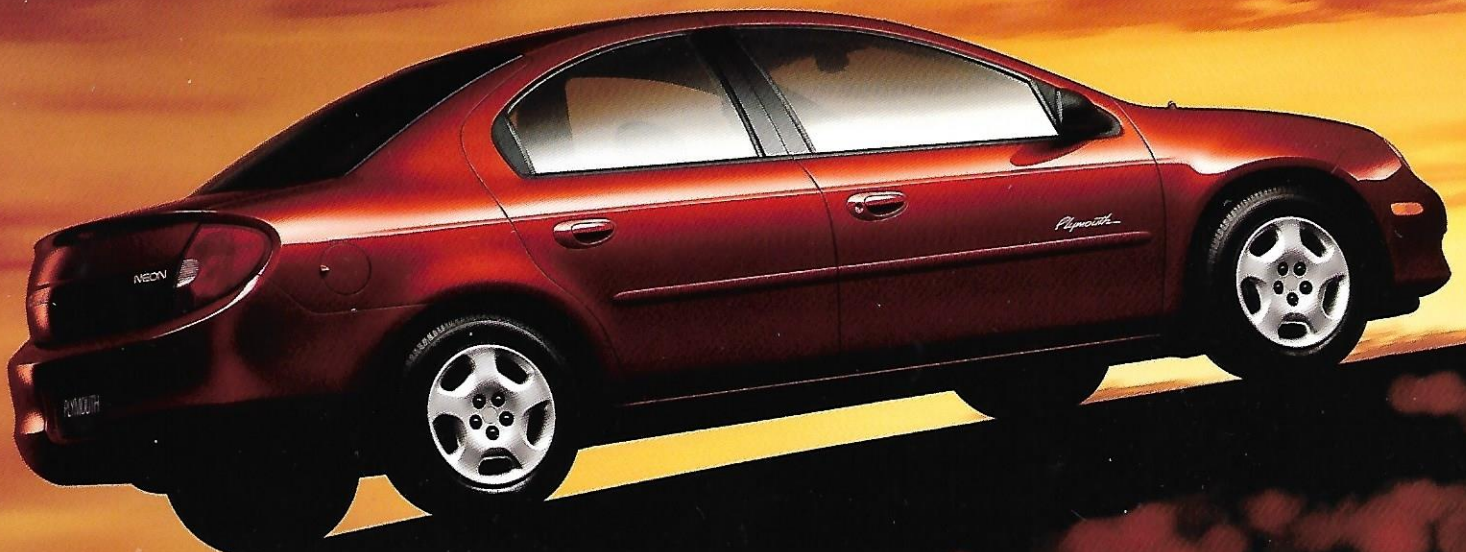
◀ **LX interior.**

Slip inside a Neon and take a moment to look around. Notice the roominess and the fact that there's a place for nearly everything. Plus, there's room for five adults to ride comfortably. Updated fabric on the seats (shown here in Taupe) looks as rich as it feels. And the contoured front seats, with added lumbar support, cradle you in comfort.



◀ **Plymouth's first interior designed with virtual reality.**

Your experience inside Neon was worked out by refining computer-generated electronic prototypes over and over until everything was "just right." The switches, cup holders, seats and instrument panel are positioned right where you would have put them had you designed the car.







Neon LX in Deep Cranberry

SELECT STANDARD FEATURES

Air Bags⁽¹⁾ — Next Generation driver and front-passenger

Bodyside Moldings — Body-color

Brakes — Power-assisted front disc/rear drum

Clock — Digital, integral to all radios

Coat Hooks — Rear (2)

Console — Floor-mounted, includes storage armrest, cup holders, coin holder, front cubby box, cassette and CD storage and tissue pack holder and integral cup holder for rear-seat passengers

Defroster — Electric rear window

Dome Lamp — With theater-dimming feature

Door Locks — Child-protection rear

Dynamic Side-Impact Intrusion Protection — Includes unique high-strength steel side-guard door beams and structural body reinforcements that also enhance front and rear crumple zone performance

Fascias — Body-color, painted or molded-in-color, front and rear⁽²⁾

Floor Mats — Front and rear, carpeted

Glass — Tinted, all windows

Glove Box — Locking with integral pen and tire pressure gauge holder

Instrument Cluster — Analog, includes speedometer, odometer, trip odometer; gauges for fuel level, engine coolant temperature; warning lamps for brake system, low oil pressure, check engine, seat belts, air bags and high beam headlamps

Map Pockets — Front doors

Mirrors

Exterior — Rearview, driver-side remote, passenger-side manual

Interior — Day/night rearview

Power Outlet — Located in front center panel

Scuff Pads — Integrated onto lower door sills

Seat Belt Cluster Lamp — After engine start, LED stays on until driver buckles up

Seat Belts — Color-keyed, three-point Unibelt for outboard seating positions, front outboard position, include height-adjustable shoulder belts, traveling inboard buckles, lap belt in rear-center location, rear-seat and shoulder belts allow easier rearward-facing child seat installation

Steering — Power rack-and-pinion

Sound System — AM/FM stereo radio with cassette player, CD changer controls and six speakers

Suspension — Four-wheel fully independent

Tires — Compact spare with scissor jack

User-Ready Child Seat Top Tether Anchors (3) — Located in rear window filler panel at each backseat position to minimize aftermarket child seat movement

Wiper System — Two-speed with variable intermittent mode

⁽¹⁾ Certified to the Federal Regulations that allow less forceful air bags. Always use seat belts. Remember a backseat is the safest place for children.

⁽²⁾ Fascias are molded-in-color when ordering Bright White or Flame Red.

SPECIFICATIONS

Engine Configuration	2.0-liter SOHC 16-valve SMPI 4-cyl
Displacement	121.8 CID
Compression Ratio	9.8:1
Bore and Stroke	3.44" x 3.27"
Fuel System	Sequential Multipoint Electronic Fuel Injection
Horsepower (SAE net @ rpm)	132 @ 5,600
Torque (lb-ft @ rpm)	130 @ 4,600

DIMENSIONS⁽³⁾

Wheelbase	105.0	Shoulder Room	
Track		Front	53.4
Front	58.0	Rear	52.8
Rear	58.0	Hip Room	
Overall Length	174.4	Front	52.4
Overall Height ⁽⁴⁾	56.0	Rear	52.9
Curb Weight ⁽⁵⁾	2,567 lb	Seating Capacity	5
Head Room		SAE Cargo Volume (cu ft)	13.1
Front	39.1	Fuel Tank (gal)	12.5
Rear	36.8	Turning Diameter	
Leg Room		Curb-to-curb (ft)	35.5
Front	42.4	Maximum Towing	
Rear	34.8	Capacity (lb)	1,000

⁽³⁾ All dimensions given in inches unless otherwise noted.

⁽⁴⁾ At curb weight.

⁽⁵⁾ Estimated.

EXTERIOR COLORS



Black



Deep Cranberry Pearl Coat

Bright White



Bright Silver Metallic



Salsa Red Pearl Coat



Flame Red



Cinnamon Glaze Metallic



Forest Green Pearl Coat



Deep Amethyst Pearl Coat



Patriot Blue Pearl Coat

Plymouth



FOR MORE INFORMATION ON PRODUCTS OR LEASING:

1-800-PLYMOUTH

www.plymouthcars.com

www.chryslerfinancial.com

Sentry Key is a registered trademark of DaimlerChrysler.