

Rolls-Royce
Phantom model range



“Our absolute priority was to create a motor car that is clearly a Rolls-Royce.”

Ian Cameron,
Chief Designer.

On its debut in 2003, Phantom led Rolls-Royce Motor Cars into the 21st century.

Designed without compromise, Phantom was the result of complete creative and engineering freedom, and the desire to create the best car in the world.

Since then Phantom has been joined by the Phantom Extended Wheelbase, the Phantom Drophead Coupé and the Phantom Coupé.

Each model has a personality of its own, yet all share the same powerful presence and unmistakable design cues that make a Rolls-Royce a Rolls-Royce.



CONTENTS

Introduction	1
Phantom	6
Phantom Extended Wheelbase	14
Phantom Drophead Coupé	16
Phantom Coupé	22
Technology	28
Rolls-Royce Motor Cars	34
Personalisation	42
Technical Specification	68
Legal Information	72



“When a Phantom drives by the world stands still.”

Ian Cameron,
Chief Designer.

Wherever you go in a Phantom, you will never go unnoticed.

It has a genuine authority, and a rare sense of scale and occasion that mark it out as a uniquely modern interpretation of the luxury motor car.

Its powerful stance reinterprets classic Rolls-Royce proportions, and captures the very essence of the marque. The 2:1 ratio of the height of the wheels to the height of the body is fundamental to this, as are the rear-hinged coach doors.

While the gentle downward curve of the roofline and upward sweep of the lower bodyline suggest movement even when stationary.

It's no wonder then that when a Phantom drives by, heads still turn.







“Behind the coach doors
awaits an oasis of
comfort and calm.”

Alan Sheppard,
Head of Interior Design.

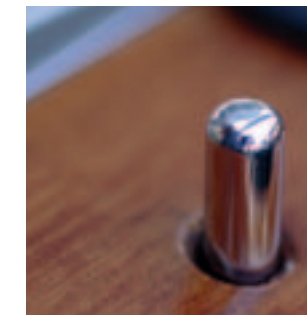
Phantom's coach doors open to reveal an interior of generous proportions.

Once inside, the experience touches all your senses: the feel and aroma of wide expanses of soft leather upholstery, the beauty of the book-matched veneer and the sensation of the deep tufted Blenheim carpets underfoot.

Natural light fills the interior, further enhancing its air of spaciousness, thanks to the quarter mirrors housed within the C-pillars.

The virtually flat floor leaves plenty of room to stretch out, while the individual or lounge seating cossets you in a uniquely intimate style.

As you settle back, you can listen to your favourite artiste on the LOGIC7 audio system, which surrounds you with some of the most realistic sound you will ever hear in an automobile.



“No effort
has been spared to
make Phantom
effortless to drive.”

Theo Martin,
Head of Vehicle Concepts.

Phantom's elevated driving position gives you a commanding view of the road ahead, and an enviable view of the Spirit of Ecstasy.

The clear and uncluttered dashboard belies the amount of technology you have at your fingertips, and ensures it serves to assist rather than confuse.

Only those controls required for everyday driving are present. Secondary functions such as the satellite navigation and entertainment system remain hidden until called upon.

To reduce fatigue on long journeys, the steering wheel, accelerator and brake pedals are aligned with the exact centre of the driver's seat.

All of which contributes to its effortless drivability.





“It’s a Phantom
with even
more presence.”

Ian Cameron,
Chief Designer.

The longer wheelbase imbues the Phantom Extended Wheelbase with a remarkable presence.

The additional 250 mm of legroom in the rear passenger compartment not only offers an interior space of lounge-like proportions it also increases the possibilities for Bespoke customisation.

It’s an indulgent private space. One that is perfect to work, entertain or relax in between engagements.

The extra length also extends to the rear-hinged coach doors, which affords you and your occupants even greater privacy and protection when entering and exiting.



“We wanted to demonstrate a more relaxed and social side of Phantom.”

Charles Coldham,
Interior Designer.

Inspired by the America's Cup J-class yachts of the 1930s and the Riva motor launches of the 1950s, the Phantom Drophead Coupé continues the long tradition of two-door, four-seat Rolls-Royce convertibles.

At the press of a button, you can share the pleasures of open-air driving with your fellow passengers. Then press your foot down and enjoy the power of its muscular V12 engine.

Even with the hood stowed beneath the rear deck there is still ample room for weekend cases or three sets of golf clubs in the boot.

The picnic boot lid provides a comfortable seat for two adults and space for a hamper – making Phantom Drophead Coupé the ideal choice for sporting or social occasions.







“What could be more romantic than open air motoring or even the sound of rain drops on a soft-top at night?”

**Ian Cameron,
Chief Designer.**

The convivial interior of the Phantom Drophead Coupé evokes the feeling of being aboard an elegant motor yacht.

The rear-hinged coach doors allow you to embark and disembark gracefully. While the sisal carpets and optional teak deck are perfectly in keeping with the car's informal elegance and nautical nature.

The rear lounge seat turns your passengers gently towards each other, and creates a more intimate atmosphere. You can also relax in the knowledge that the windscreen surround has been designed for optimum strength and rollover protection.

Phantom Drophead Coupé features the largest and most refined canvas hood of any modern convertible car. Each one is tailored by hand and is available in six colours, chosen to complement and enhance the exterior paint colours.

When raised, the interior is almost as whisper-quiet as Phantom's.





PHANTOM COUPÉ

“As soon as you sit in the driver’s seat you can sense the spirited nature of the Phantom Coupé.”

Theo Martin,
Head of Vehicle Concepts.

The most driver-orientated model in the Phantom family, the Phantom Coupé is a sleek and seductive combination of classic proportions, powerful presence and breathtaking detailing.

A modern take on classic Grand Touring cars, and inspired by the Phantom II Continental, its beautifully proportioned body exudes performance and style.

The coach doors and the optional brushed stainless steel bonnet, 21-inch alloy wheels and visible exhausts further enforce its purposeful look.

Effortlessly powered by the same 6.75-litre V12 engine as Phantom, the Phantom Coupé has a more dynamic ride thanks to its shorter wheelbase, revised transmission, suspension and steering.

The electronic gearbox can be adjusted by pressing a button on the steering wheel, making the car feel more responsive and giving more feedback from the road without compromising comfort.

Agile, fast, supremely comfortable and virtually silent, the Phantom Coupé is the perfect car for a transcontinental drive.





“The interior invites you to step into another world, especially at night.”

Alan Sheppard,
Head of Interior Design.

The sumptuous and calming interior of the Phantom Coupé makes any journey as rewarding for the passengers as the driver.

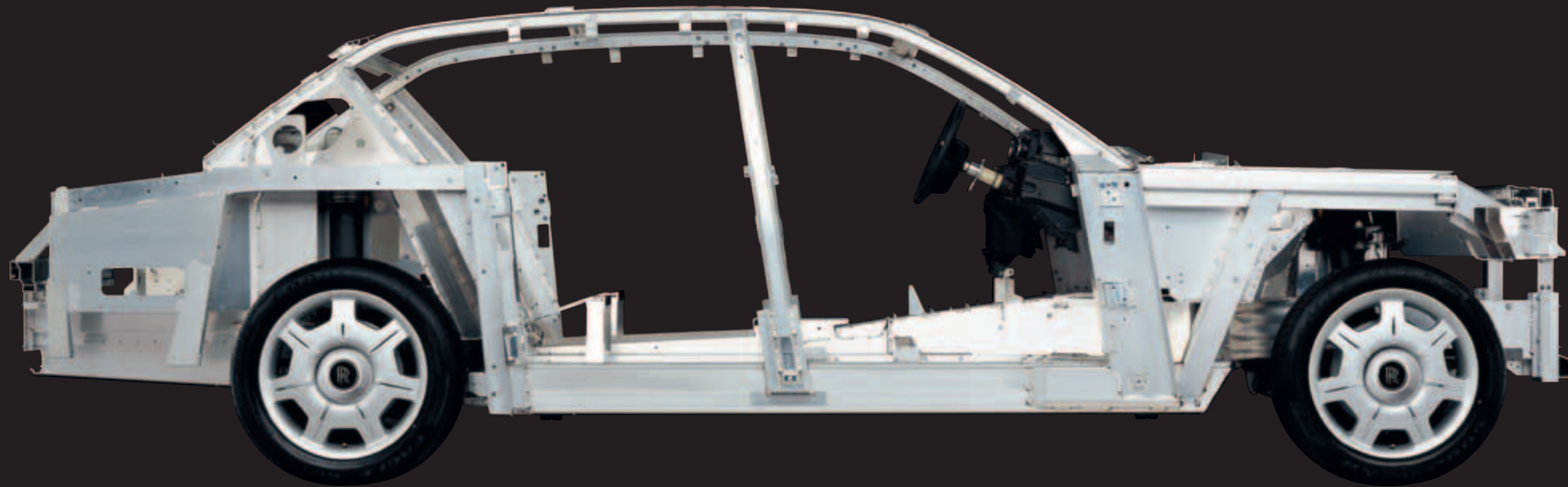
An optional starlight headlining creates a unique, magical ambience. Over 1,600 fibre-optic lights cover the entire length of the roof and create the illusion of a star-filled night sky.

Bright enough to read by on the highest setting, they can be switched off completely or dimmed to a soothing glow.

Another truly defining feature of the Phantom Coupé is the use of expertly applied wood veneer, which provides a wonderfully warm contrast to the cool, milled-finish of the aluminium dashboard.

This can be further enhanced with the optional Extended Veneer Package, which extends the veneer to the rear window surround, parcel shelf and door cappings, evoking the era of coach-built Rolls-Royces.





“Phantom reclaimed Rolls-Royce’s position at the forefront of automotive design, engineering and construction.”

Helmut Riedl,
Engineering Director.

At the heart of the Phantom family is a lightweight aluminium spaceframe. This remarkable piece of engineering is painstakingly hand-welded from over 500 separate parts and uses over 100 metres of weld.

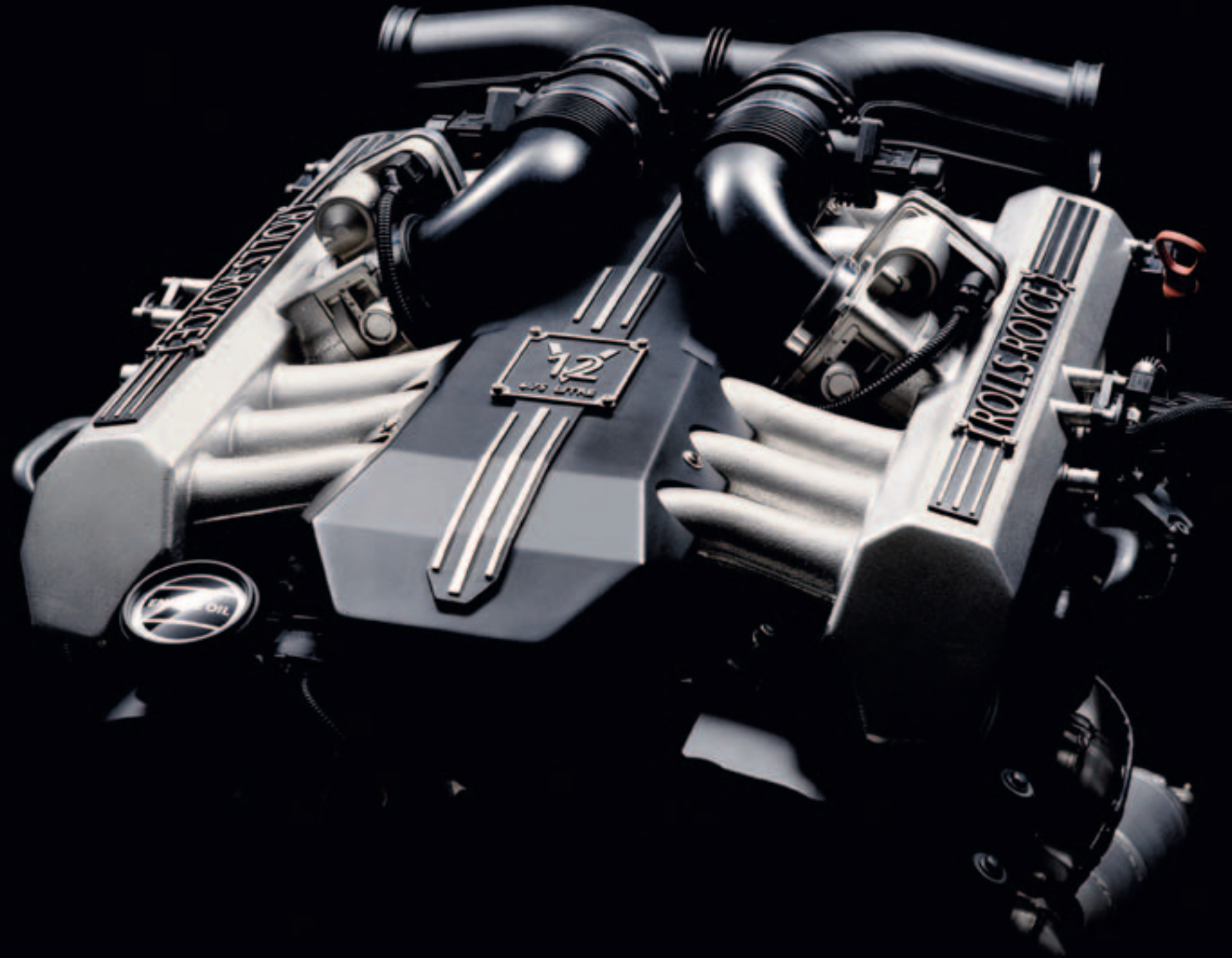
Incredibly light but strong, it is both stiff and dynamic, and the largest of its kind in the automotive industry.

When combined with the state-of-the-art suspension technologies, it creates the air-cushioned ‘magic carpet ride’ that is characteristic of Rolls-Royce.

Its incredible stiffness not only enhances the driving performance and improves comfort, it also reduces vibration, which in turn reduces noise and helps keep our interiors whisper-quiet.

The double-skinned flat floor of the spaceframe conceals much of the technology, making it conspicuous by its apparent absence.





“An abundance of effortless power is an essential element of the Rolls-Royce driving experience.”

Theo Martin,
Head of Vehicle Concepts.

All Rolls-Royce motor cars feature a Power Reserve dial on their facia, rather than a rev counter. It's a reminder that there is always power to spare in our engines, and tells you exactly how much you have at your disposal.

Phantom's 6.75-litre V12 engine, for example, when travelling at 70 mph (113 km/h) only uses less than 10% of its available power. Yet it delivers 75% of its torque at 1,000 rpm – just off idle.

Coupled to the six-speed transmission, it responds to the squeeze of the throttle with the power of a performance car. While its acceleration is so smooth, it feels as if you have an infinite first gear.

“A Rolls-Royce
is a paragon of
composure, comfort
and stability.”

Helmut Riedl,
Engineering Director.

When you step out of a Phantom, you will feel as relaxed as when you stepped in – if not more so.

Whichever Phantom you choose, it will whisk you across town or a continent, and maintain its unrivalled driving experience and sublime ride comfort at all times.

Even when accelerating or riding over rough terrain, the car appears and feels as if it is floating on a cushion of air – which, thanks to its air suspension, it is.

Indeed, the self-levelling air springs are so sensitive they can detect if a passenger in the rear moves from one side of the car to the other, and adjust the suspension accordingly.





“Strive for perfection
in everything you do.
Take the best that exists
and make it better.
When it does not exist,
design it.”

Sir Henry Royce.

Charles Rolls and Henry Royce met for the first time over lunch in the Midland Hotel, Manchester on 4 May 1904. On that day they agreed to start producing and selling cars under the name Rolls-Royce.

Within three years, they launched The Silver Ghost – a car of unprecedented refinement and reliability. This was demonstrated when it was driven virtually non-stop between London and Glasgow 27 times – a staggering 14,371 miles. It led a motoring journalist to describe Rolls-Royce as producing ‘the best car in the world’. A tradition we are proud to continue with the Phantom family.

Indeed, we are still driven by Sir Henry Royce’s inspiring words. They encourage our designers to challenge automotive conventions and produce ideas others would deem impossible. They challenge our engineers to find innovative solutions to make them possible. And spur our craftspeople to painstakingly turn them into the finished product.

It’s how we’ve always made our cars, and it’s how we always will.



“The intention was to create a finely crafted, contemporary building that works in harmony with its natural setting.”

Sir Nicholas Grimshaw,
Architect.

Goodwood is the spiritual home of Rolls-Royce Motor Cars. Set in the South Downs, England and designed by the world-renowned architect Sir Nicholas Grimshaw, our modern day home embodies our ethos of bringing modern technology and traditional skills together.

Here the Phantom model family and Ghost are hand-built under the same roof – one of the largest single-span ‘living roofs’ in Europe. Covered with thousands of sedum plants, it changes colour with the seasons and helps our building blend seamlessly with the surrounding countryside. As do the cedar cladding louvres, which also automatically adjust to shield the glare of the sun.

From the outside, you get a tantalising view of the assembly line through the ‘Glass Mile’ that runs the length of the building. Thanks to the extensive use of glass, the workshops are flooded with natural light, which creates the perfect environment for our craftspeople to hone their skills and transform the finest natural materials into the finest cars in the world.





“It feels as if somebody made the car with skilled and caring hands just for you.”

Xaver Franz,
Manufacturing Director.

Our cars arrive at the assembly line as bare bodyshells and leave it as the finished article.

Moving slowly through the assembly process, each stage of the hand-build is meticulously completed and documented.

Each car passes through at least 60 pairs of hands and we know who assembled every last detail of your Rolls-Royce. It's a complex and detailed process as most Phantoms are highly personalised or have Bespoke additions.

After weeks of care and attention from our craftspeople and assembly teams, a new Rolls-Royce has a final hurdle to clear before it is deemed ready to leave Goodwood – the stress test.

We put the car through its paces to ensure that every aspect is perfect. Any issues that arise, however small, are rectified in the test and finish area. Once the team is satisfied that everything is perfect, only then will it be dispatched to its waiting owner.



“Experimentation has
been at the heart of
Rolls-Royce philosophy
for more than a century.”

**Ian Cameron,
Chief Designer.**

Throughout our history, we have used experimental cars to develop new ideas, manufacturing solutions and to shape the future of the marque.

EX models are not mere concept cars; they are fully formed and functional vehicles in their own right. And while they are not designed to go directly into production, many of the ideas they inspire do.

Indeed, the Phantom Drophead Coupé and Phantom Coupé started life as 100EX and 101EX, respectively.

By exploring adventurous themes, advanced concepts and bold technology through living, breathing EX models, Rolls-Royce remains at the forefront of automotive design and engineering.



PERSONALISATION

“Commissioning a Rolls-Royce is one of life’s unforgettable moments.”

Ian Cameron,
Chief Designer.

Deciding which Phantom to commission is only the start.

As well as specifying the veneer, upholstery and paintwork, you have a wide range of options and accessories to choose from.

You may wish to add front and rear cameras to assist with parking, rear curtains to guarantee privacy or a set of lambswool rugs for extra comfort.

The theatre configuration transforms the rear compartment into your own private screening room, enabling you to watch television or DVDs on long journeys on two 12-inch screens.

You can also subtly change the character and appearance of your Phantom depending on which of the seven wheel designs you choose.

These are just a few of the many options available. Your local Rolls-Royce Motor Cars authorised dealer will guide you through all of them, and can even arrange for you to visit Goodwood to help you make your decision.



“With Bespoke
the possibilities
for further
personalisation are
virtually limitless.”

Thomas Jefferson,
Manager, Bespoke Sales.

Our Bespoke programme allows you to create a car that is as unique as you are.

From the smallest detail to the boldest statement, no request is considered too extravagant or unreasonable.

Be it for a discreet humidor in the glove compartment, a chilled drinks cabinet in the rear or an illuminated Spirit of Ecstasy on the grille, our Bespoke team will be only too happy to oblige.

We can create exterior paint or interior leather to match any colour you desire. And should you want your initials embroidered on the seat headrests or inlaid into the veneer we will do that too.

On one occasion, we even furnished an interior with veneer from a tree felled on the customer's estate.

But that's just for starters, there is virtually no limit to what can be achieved.



“We’ll bring your ideas to life.”

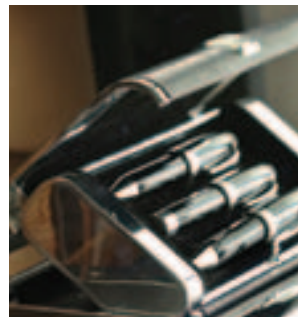
Gavin Hartley,
Bespoke Design.

At the start of the Bespoke process a designer will work with you to help shape and develop your ideas. You can either do this in person at Goodwood or through your local Rolls-Royce Motor Cars authorised dealership.

Once your ideas are down on paper, the skilled craftspeople and engineers in the Bespoke team will incorporate them into your car.

If this means finding new materials, paints, technology and engineering solutions, they will find them.

Whatever you dream up, you can be sure we’ll do our utmost to make it a reality.





“We don’t just paint our cars, we strive to create an incredibly deep, flawless shine.”

Lisa Tandy,
Paint Associate.

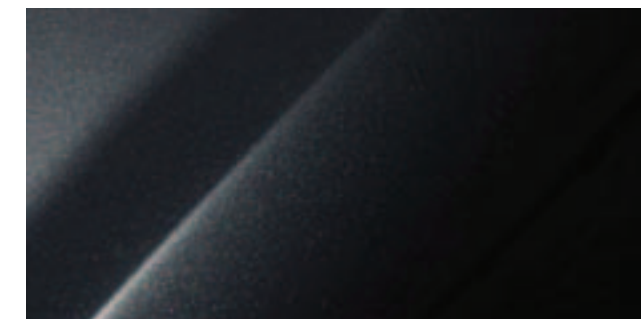
When you look closely at Phantom’s paintwork, you’ll see a perfect reflection of yourself staring back at you.

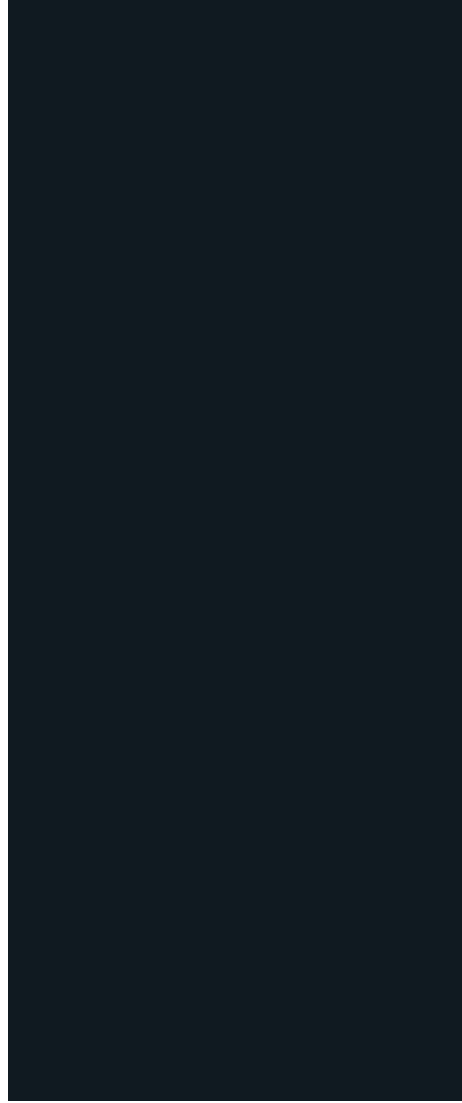
To achieve this flawless finish we carefully hand-sand every inch of the bodywork between each coat of paint.

The bodywork is then given a fingertip inspection by our technicians, with any imperfections gently sanded down and repolished in readiness for its fifth and final coat, a layer of clear lacquer.

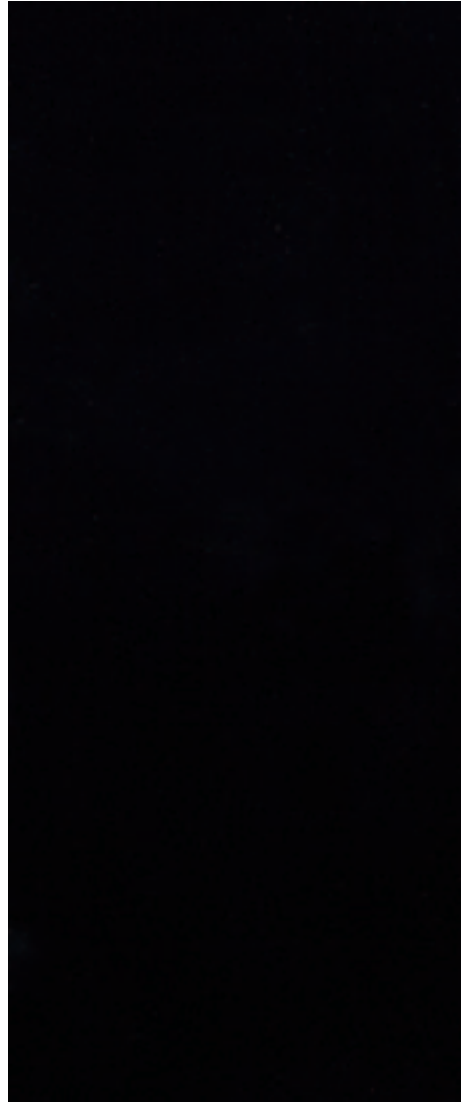
It then receives a further five hours of meticulous hand-polishing to reach the standard of finish we demand and you expect.

Should you wish, you can choose to add a five-metre long single or double coachline through our Bespoke service. Painted by a skilled craftsman using a special brush made from ox and squirrel hair, each perfectly straight line takes three hours to paint and is precisely 3 mm wide.





Black



Diamond Black



Anthracite



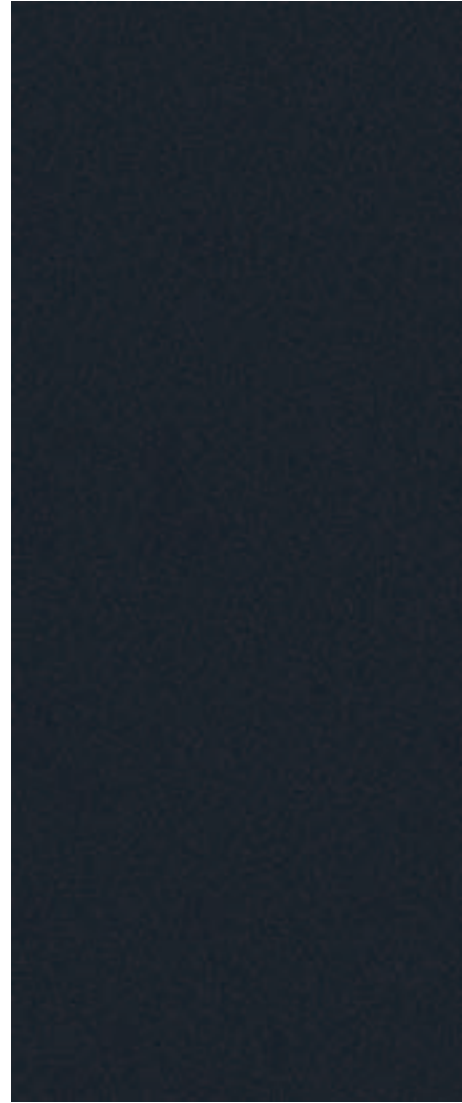
Jubilee Silver



Silver



Midnight Blue



Darkest Tungsten



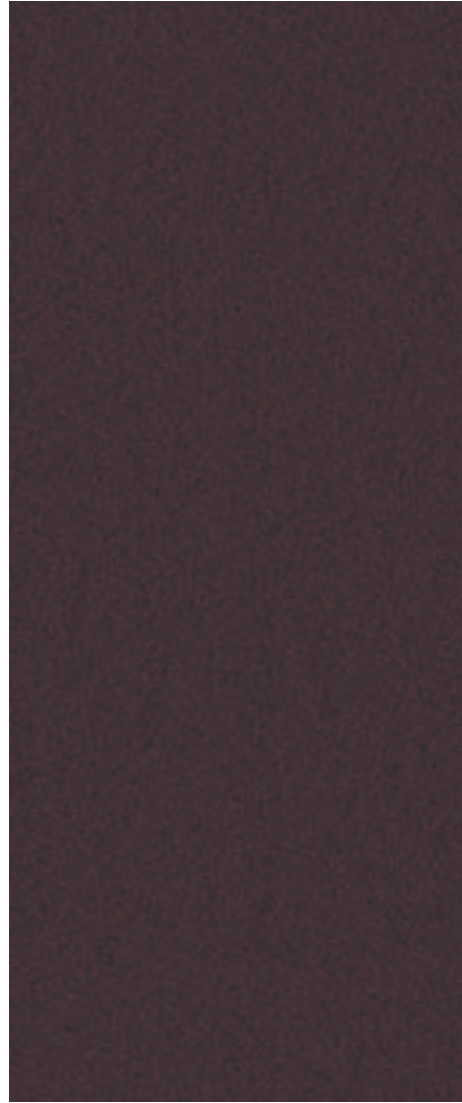
Blue Velvet



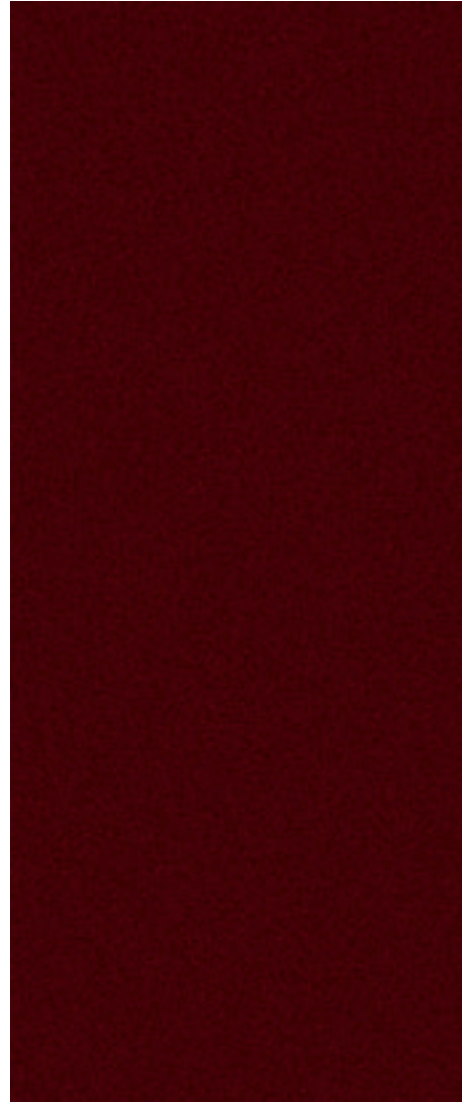
Metropolitan Blue



Woodland Green



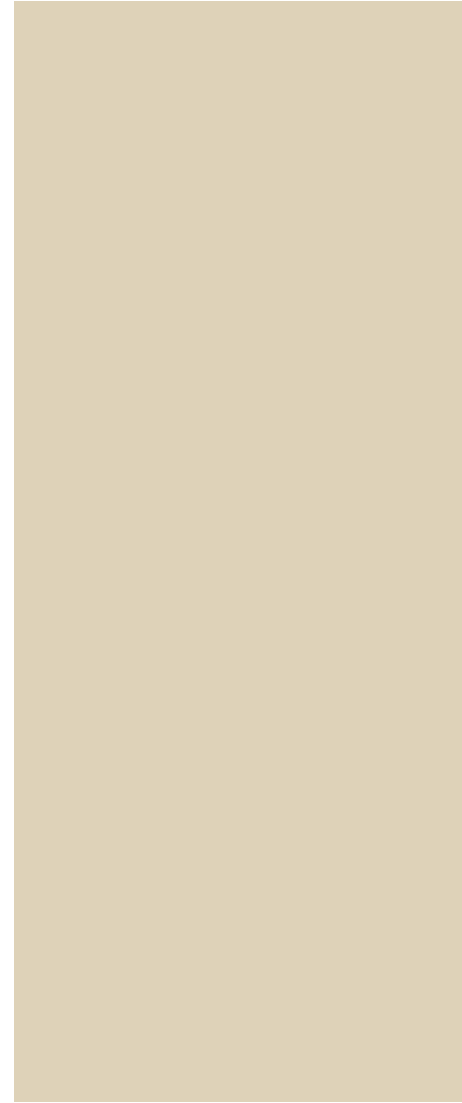
New Sable



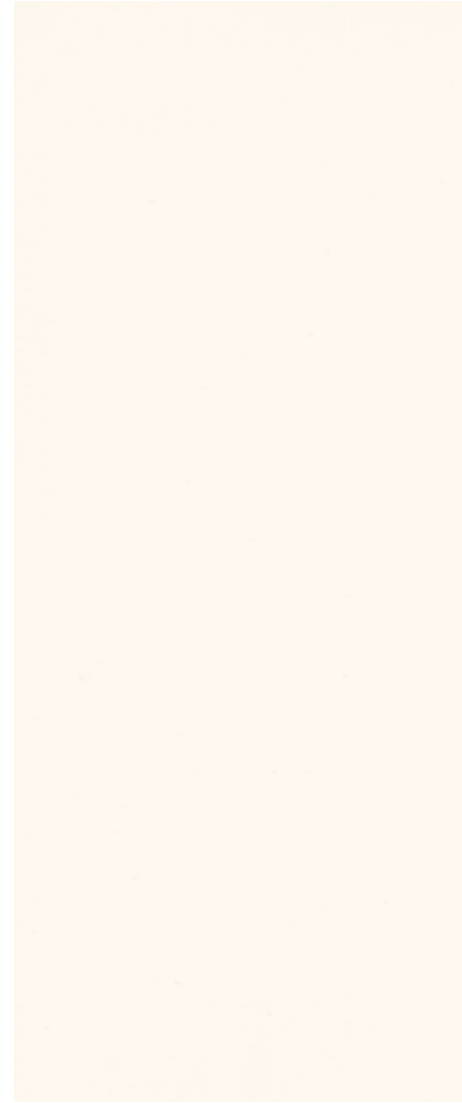
Madeira Red



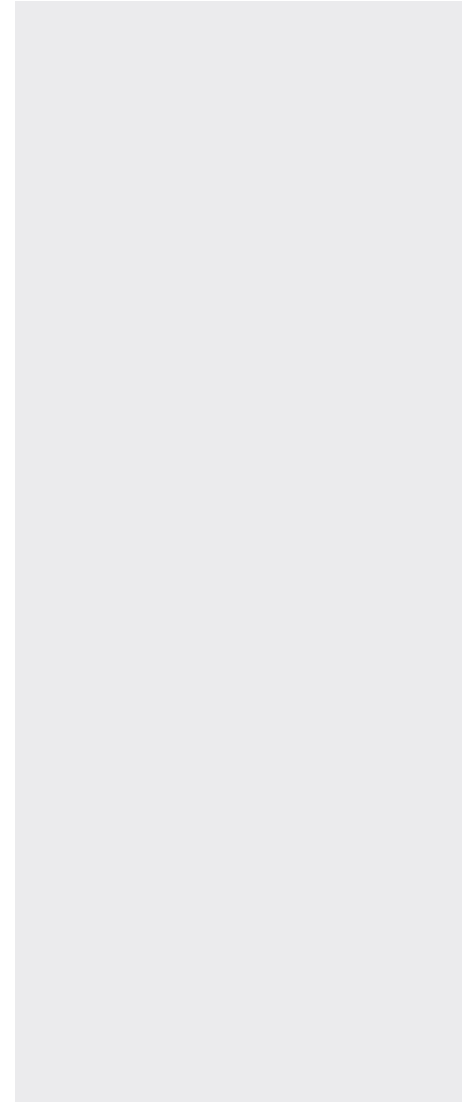
Ensign Red



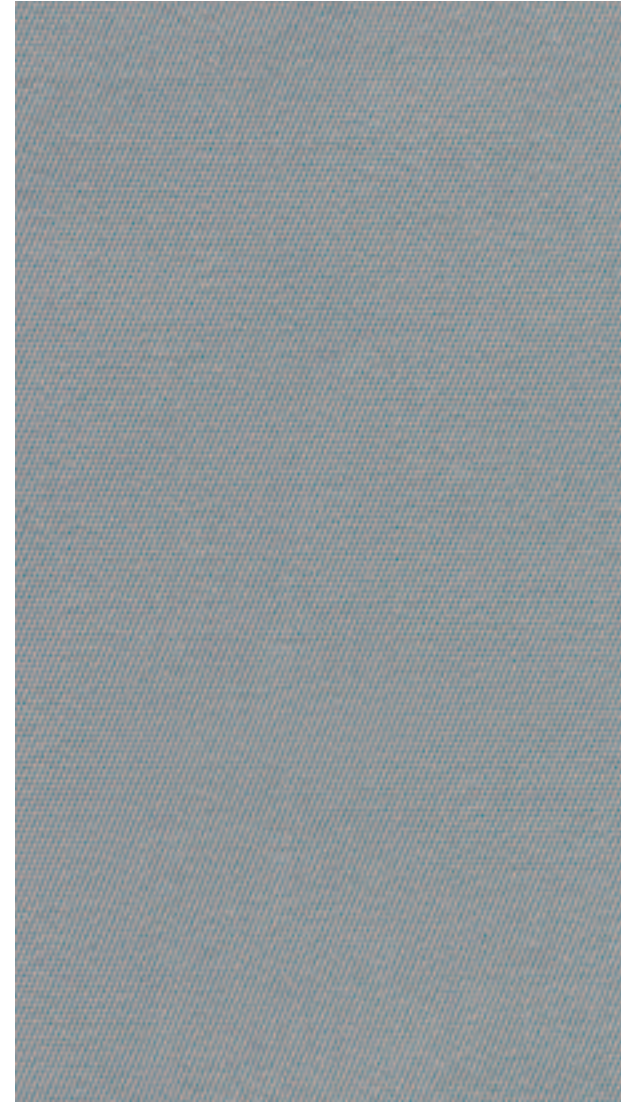
Cornish White



English White



Arctic White



Black

Navy Blue

Deep Green

Deep Red

Beige

Silver



“Our leather is inspected for the smallest imperfections by the finest optical instrument available – the human eye.”

**Ben Creasey,
Laser Cutter.**

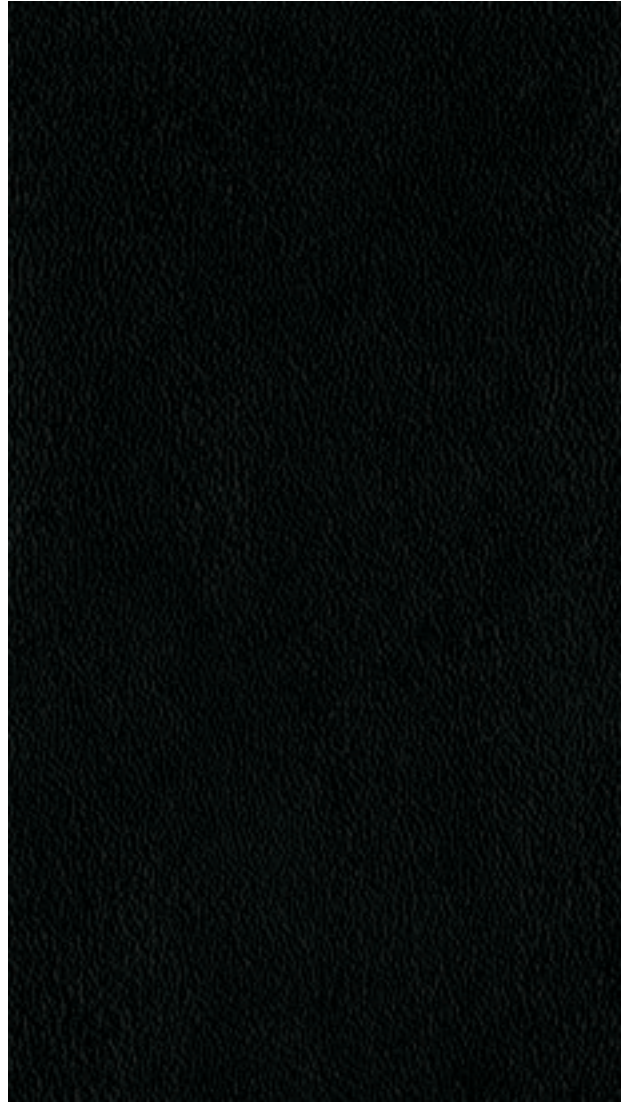
Even the slightest imperfection has no place in a Rolls-Royce. Which is why we only use A-grade bull leather. This ensures the upholstery and trim in your Phantom will have no unsightly scars or stretch marks.

We use at least eleven hides for the interior of the Phantom, and to guarantee perfect consistency of colour throughout, each one comes from the same batch.

We also drum dye our hides rather than paint them so that the colour permeates right through the leather.

This process also imparts a natural suppleness to the leather and means it will neither squeak nor crack. So all you will notice when you settle into your Phantom is the remarkable softness of the leather itself.





Black

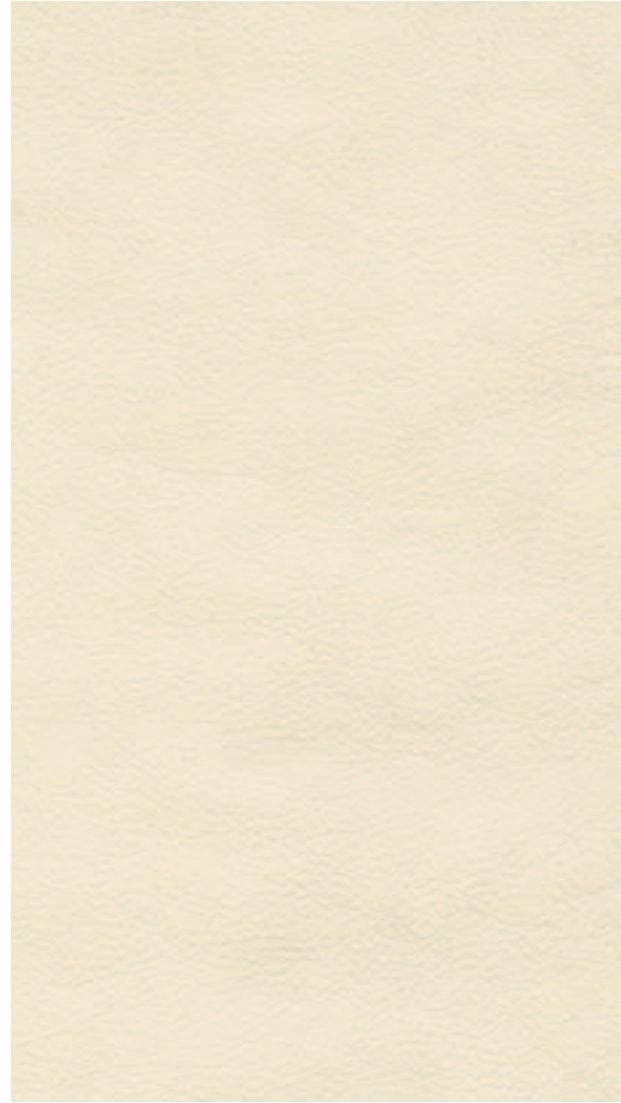
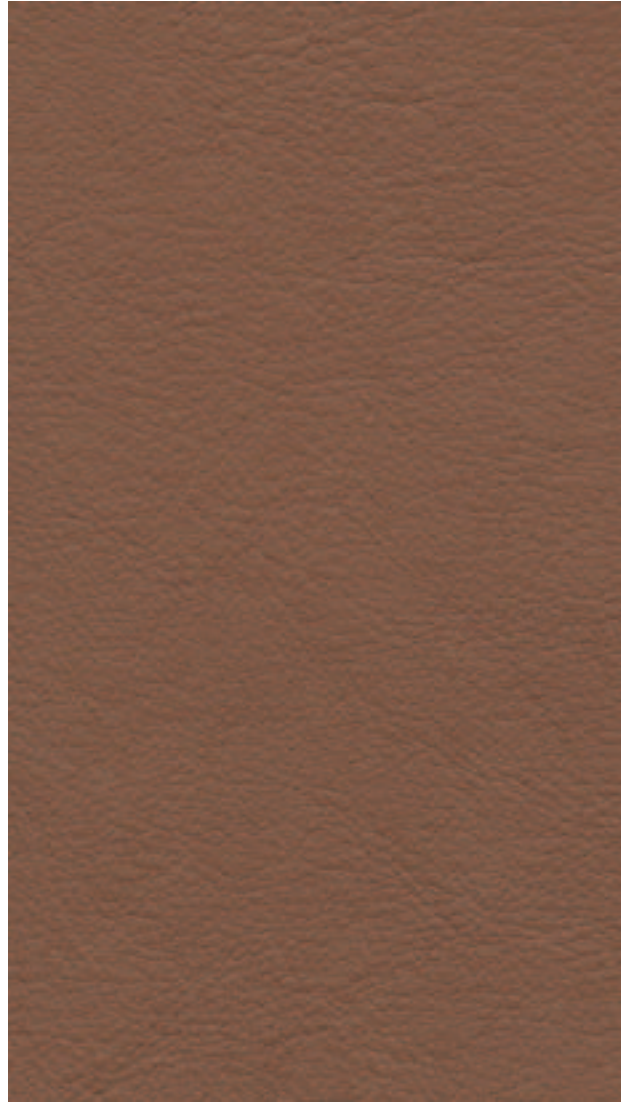
Blue Grey

Smoke Grey

Navy Blue

Dark Spice

Pine Green



Fawn Brown

Consort Red

Signal Red

Moccasin

Seashell

Crème Light



“I look for burrs
and complex grains
that add interest.”

Dan Austin,
Veneer Specialist.

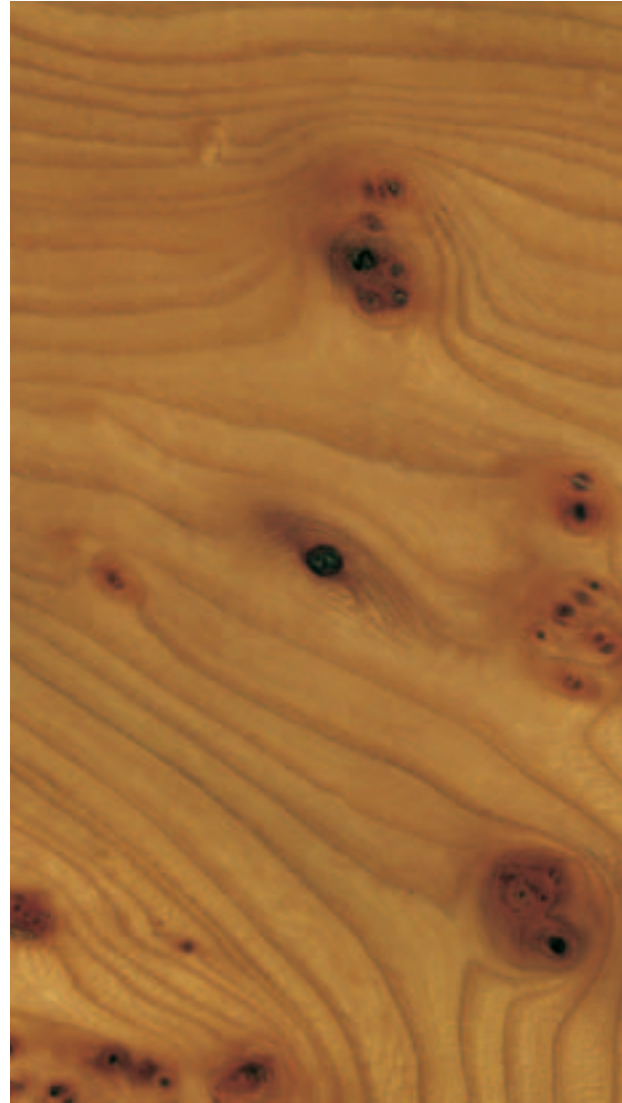
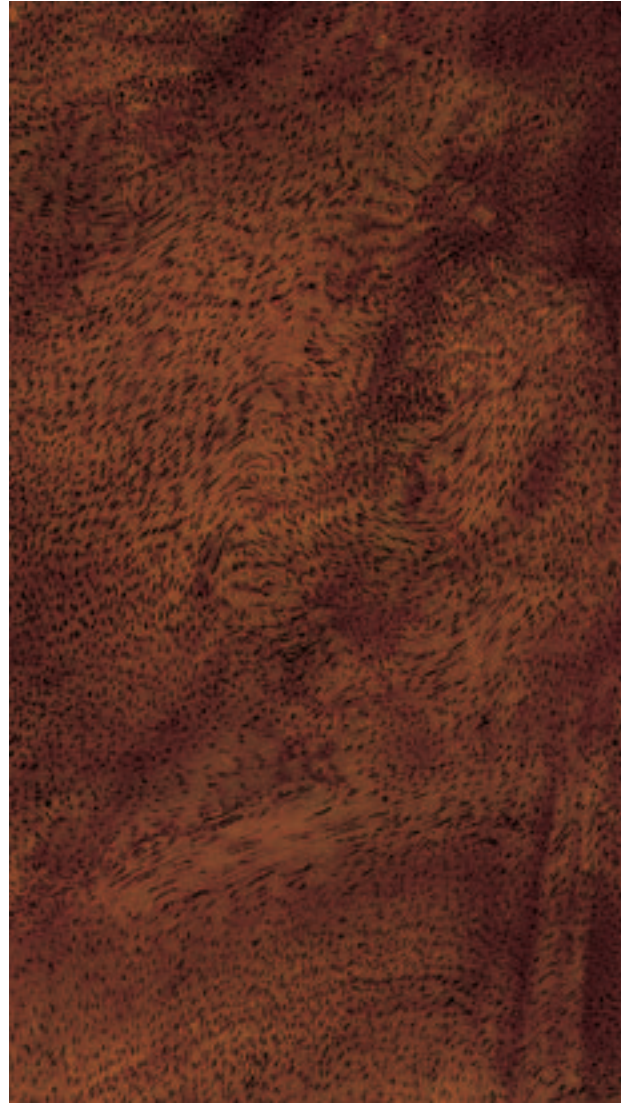
Beautiful wood is integral to all Rolls-Royce motor cars and adds a simple but striking finishing touch.

We use up to 10 square metres of veneer and up to 41 separate wood parts to create a single interior. And each piece is cut from consecutive slices of the same tree to ensure consistency of grain, colour and aging.

The veneers are then painstakingly book-matched by our wood craftspeople, many of whom were cabinet-makers, to create a symmetrical mirror image of grain through the centre of the facia.

This is delicate, precise work that creates a seamless flow of highly-polished veneer throughout the car.





Piano Black

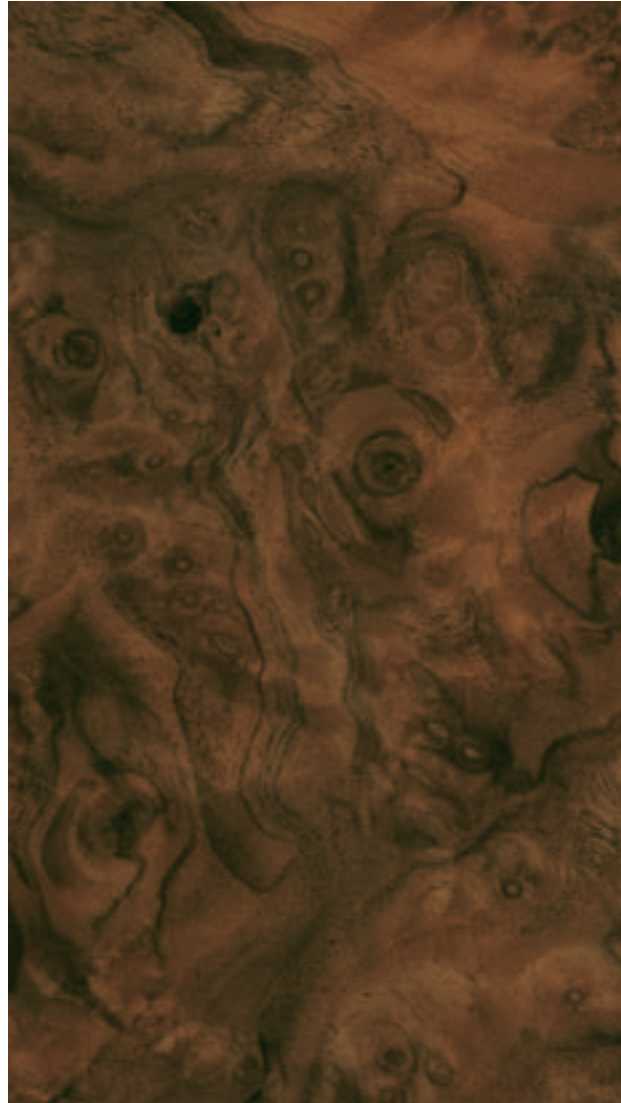
Mahogany Flare

Rosewood

Brown Oak

Elm Cluster

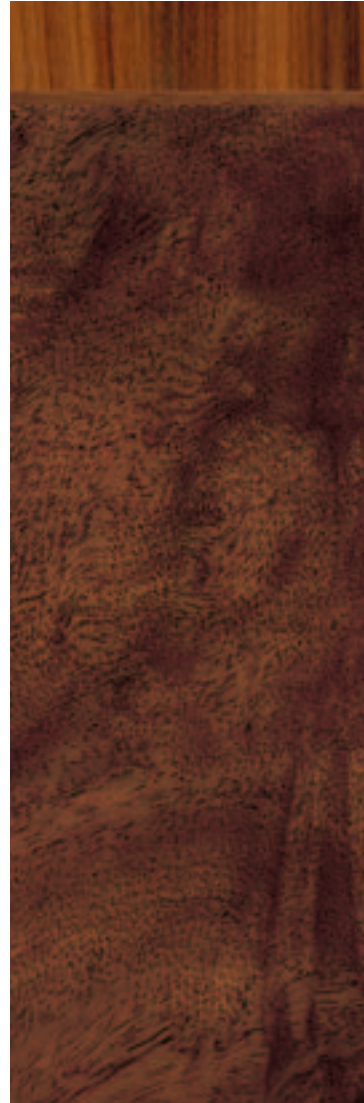
Ash Burr



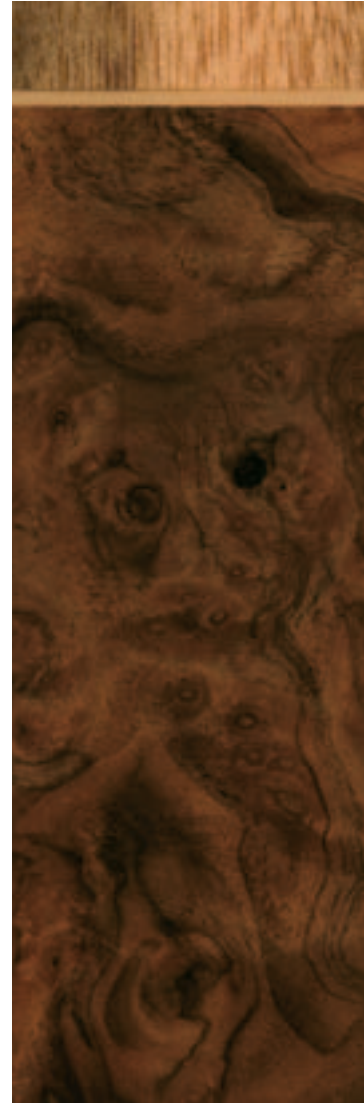
Walnut Burr

Olive Ash Burr

Zebrano



Crossbanded Mahogany Flare



Crossbanded Walnut Burr



Crossbanded Elm Cluster



Crossbanded Santos Palissander



Crossbanded Ash Burr

Not all veneers are available as standard across all models.

TECHNICAL SPECIFICATION

Phantom



World

Dimensions

Number of doors / seats	4 / 5
Vehicle length	5840 mm / 229.9 in
Vehicle width	1990 mm / 78.3 in
Vehicle height (unladen)	1638 mm / 64.5 in
Wheelbase	3570 mm / 140.6 in
Turning circle	13.8 m / 45.3 ft
Boot volume	460 ltr / 16.2 ft ³

Weight

Unladen weight (DIN)	2550 kg / 5622 lb
----------------------	-------------------

Engine

Engine / cylinders / valves	V / 12 / 48
Fuel management	Direct injection
Power output @ engine speed	453 bhp / 460 PS (DIN) / 338 kW @ 5350 rpm
Max torque @ engine speed	720 Nm / 531 lb ft @ 3500 rpm
Fuel type	Premium unleaded*

Performance[†]

Top speed	150 mph / 240 km/h (governed)
Acceleration 0-60 mph	5.7 sec
Acceleration 0-100 km/h	5.9 sec

Fuel Consumption – Exhaust Emissions Standard EU-4

Urban	23.2 ltr/100 km / 12.2 mpg (Imp.)
Extra urban	11.3 ltr/100 km / 25.0 mpg (Imp.)
Combined consumption / range	15.7 ltr/100 km / 18.0 mpg (Imp.)
CO ₂ emissions (combined)	377 g/km

Fuel Consumption – Exhaust Emissions Standard EU-5

Urban	25.0 ltr/100 km / 11.3 mpg (Imp.)
Extra urban	11.5 ltr/100 km / 24.6 mpg (Imp.)
Combined consumption / range	16.5 ltr/100 km / 17.1 mpg (Imp.)
CO ₂ emissions (combined)	385 g/km

USA

Dimensions

Number of doors / seats	4 / 5
Vehicle length	5840 mm / 229.9 in
Vehicle width	1990 mm / 78.3 in
Vehicle height (unladen)	1638 mm / 64.5 in
Wheelbase	3570 mm / 140.6 in
Turning circle	13.8 m / 45.3 ft
Trunk volume	460 ltr / 16.2 ft ³

Weight

Curb weight	2630 kg / 5798 lb
-------------	-------------------

Engine

Engine / cylinders / valves	V / 12 / 48
Fuel management	Direct injection
Power output @ engine speed	453 hp (SAE) @ 5350 rpm
Max torque @ engine speed	720 Nm / 531 lb ft @ 3500 rpm
Fuel type	Premium unleaded*

Performance[†]

Top speed	150 mph / 240 km/h (governed)
Acceleration 0-60 mph	5.7 sec
Acceleration 0-100 km/h	5.9 sec

Fuel Consumption (USA and Canada)[‡]

City (USA)	14.0 mpg
Highway (USA)	24.2 mpg
City (Canada)	18.7 ltr/100 km
Highway (Canada)	11.4 ltr/100 km

Phantom Extended Wheelbase



World

Dimensions

Number of doors / seats	4 / 5
Vehicle length	6090 mm / 239.8 in
Vehicle width	1990 mm / 78.3 in
Vehicle height (unladen)	1640 mm / 64.6 in
Wheelbase	3820 mm / 150.4 in
Turning circle	14.6 m / 47.9 ft
Boot volume	460 ltr / 16.2 ft ³

Weight

Unladen weight (DIN)	2670 kg / 5886 lb
----------------------	-------------------

Engine

Engine / cylinders / valves	V / 12 / 48
Fuel management	Direct injection
Power output @ engine speed	453 bhp / 460 PS (DIN) / 338 kW @ 5350 rpm
Max torque @ engine speed	720 Nm / 531 lb ft @ 3500 rpm
Fuel type	Premium unleaded*

Performance[†]

Top speed	150 mph / 240 km/h (governed)
Acceleration 0-60 mph	5.8 sec
Acceleration 0-100 km/h	6.1 sec

Fuel Consumption – Exhaust Emissions Standard EU-4

Urban	23.3 ltr/100 km / 12.1 mpg (Imp.)
Extra urban	11.4 ltr/100 km / 24.8 mpg (Imp.)
Combined consumption / range	15.8 ltr/100 km / 17.9 mpg (Imp.)
CO ₂ emissions (combined)	380 g/km

Fuel Consumption – Exhaust Emissions Standard EU-5

Urban	25.1 ltr/100 km / 11.3 mpg (Imp.)
Extra urban	11.7 ltr/100 km / 24.1 mpg (Imp.)
Combined consumption / range	16.6 ltr/100 km / 17.0 mpg (Imp.)
CO ₂ emissions (combined)	388 g/km

USA

Dimensions

Number of doors / seats	4 / 5
Vehicle length	6090 mm / 239.8 in
Vehicle width	1990 mm / 78.3 in
Vehicle height (unladen)	1640 mm / 64.6 in
Wheelbase	3820 mm / 150.4 in
Turning circle	14.6 m / 47.9 ft
Trunk volume	460 ltr / 16.2 ft ³

Weight

Curb weight	2690 kg / 5930 lb
-------------	-------------------

Engine

Engine / cylinders / valves	V / 12 / 48
Fuel management	Direct injection
Power output @ engine speed	453 hp (SAE) @ 5350 rpm
Max torque @ engine speed	720 Nm / 531 lb ft @ 3500 rpm
Fuel type	Premium unleaded*

Performance[†]

Top speed	150 mph / 240 km/h (governed)
Acceleration 0-60 mph	5.8 sec
Acceleration 0-100 km/h	6.1 sec

Fuel Consumption (USA and Canada)[‡]

City (USA)	14.0 mpg
Highway (USA)	24.2 mpg
City (Canada)	18.7 ltr/100 km
Highway (Canada)	11.4 ltr/100 km

TECHNICAL SPECIFICATION

Phantom Drophead Coupé



World

Dimensions

Number of doors / seats	2 / 4
Vehicle length	5609 mm / 220.8 in
Vehicle width	1987 mm / 78.2 in
Vehicle height (unladen)	1581 mm / 62.2 in
Wheelbase	3320 mm / 130.7 in
Turning circle	13.1 m / 43.0 ft
Boot volume	315 ltr / 11.1 ft ³

Weight

Unladen weight (DIN)	2620 kg / 5776 lb
----------------------	-------------------

Engine

Engine / cylinders / valves	V / 12 / 48
Fuel management	Direct injection
Power output @ engine speed	453 bhp / 460 PS (DIN) / 338 kW @ 5350 rpm
Max torque @ engine speed	720 Nm / 531 lb ft @ 3500 rpm
Fuel type	Premium unleaded*

Performance[†]

Top speed	150 mph / 240 km/h (governed)
Acceleration 0-60 mph	5.6 sec
Acceleration 0-100 km/h	5.8 sec

Fuel Consumption – Exhaust Emissions Standard EU-4

Urban	23.2 ltr/100 km / 12.2 mpg (Imp.)
Extra urban	11.3 ltr/100 km / 25.0 mpg (Imp.)
Combined consumption / range	15.7 ltr/100 km / 18.0 mpg (Imp.)
CO ₂ emissions (combined)	377 g/km

Fuel Consumption – Exhaust Emissions Standard EU-5

Urban	25.0 ltr/100 km / 11.3 mpg (Imp.)
Extra urban	11.5 ltr/100 km / 24.6 mpg (Imp.)
Combined consumption / range	16.5 ltr/100 km / 17.1 mpg (Imp.)
CO ₂ emissions (combined)	385 g/km

USA

Dimensions

Number of doors / seats	2 / 4
Vehicle length	5609 mm / 220.8 in
Vehicle width	1987 mm / 78.2 in
Vehicle height (unladen)	1581 mm / 62.2 in
Wheelbase	3320 mm / 130.7 in
Turning circle	13.1 m / 43.0 ft
Trunk volume	315 ltr / 11.1 ft ³

Weight

Curb weight	2670 kg / 5886 lb
-------------	-------------------

Engine

Engine / cylinders / valves	V / 12 / 48
Fuel management	Direct injection
Power output @ engine speed	453 hp (SAE) @ 5350 rpm
Max torque @ engine speed	720 Nm / 531 lb ft @ 3500 rpm
Fuel type	Premium unleaded*

Performance[†]

Top speed	150 mph / 240 km/h (governed)
Acceleration 0-60 mph	5.6 sec
Acceleration 0-100 km/h	5.8 sec

Fuel Consumption (USA and Canada)[‡]

City (USA)	14.0 mpg
Highway (USA)	24.2 mpg
City (Canada)	18.7 ltr/100 km
Highway (Canada)	11.4 ltr/100 km

Phantom Coupé



World

Dimensions

Number of doors / seats	2 / 4
Vehicle length	5612 mm / 220.9 in
Vehicle width	1987 mm / 78.2 in
Vehicle height (unladen)	1598 mm / 62.9 in
Wheelbase	3320 mm / 130.7 in
Turning circle	13.1 m / 43.0 ft
Boot volume	395 ltr / 13.9 ft ³

Weight

Unladen weight (DIN)	2590 kg / 5710 lb
----------------------	-------------------

Engine

Engine / cylinders / valves	V / 12 / 48
Fuel management	Direct injection
Power output @ engine speed	453 bhp / 460 PS (DIN) / 338 kW @ 5350 rpm
Max torque @ engine speed	720 Nm / 531 lb ft @ 3500 rpm
Fuel type	Premium unleaded*

Performance[†]

Top speed	155 mph / 250 km/h (governed)
Acceleration 0-60 mph	5.6 sec
Acceleration 0-100 km/h	5.8 sec

Fuel Consumption – Exhaust Emissions Standard EU-4

Urban	23.2 ltr/100 km / 12.2 mpg (Imp.)
Extra urban	11.3 ltr/100 km / 25.0 mpg (Imp.)
Combined consumption / range	15.7 ltr/100 km / 18.0 mpg (Imp.)
CO ₂ emissions (combined)	377 g/km

Fuel Consumption – Exhaust Emissions Standard EU-5

Urban	25.0 ltr/100 km / 11.3 mpg (Imp.)
Extra urban	11.5 ltr/100 km / 24.6 mpg (Imp.)
Combined consumption / range	16.5 ltr/100 km / 17.1 mpg (Imp.)
CO ₂ emissions (combined)	385 g/km

USA

Dimensions

Number of doors / seats	2 / 4
Vehicle length	5612 mm / 220.9 in
Vehicle width	1987 mm / 78.2 in
Vehicle height (unladen)	1598 mm / 62.9 in
Wheelbase	3320 mm / 130.7 in
Turning circle	13.1 m / 43.0 ft
Trunk volume	395 ltr / 13.9 ft ³

Weight

Curb weight	2620 kg / 5771 lb
-------------	-------------------

Engine

Engine / cylinders / valves	V / 12 / 48
Fuel management	Direct injection
Power output @ engine speed	453 hp (SAE) @ 5350 rpm
Max torque @ engine speed	720 Nm / 531 lb ft @ 3500 rpm
Fuel type	Premium unleaded*

Performance[†]

Top speed	155 mph / 250 km/h (governed)
Acceleration 0-60 mph	5.6 sec
Acceleration 0-100 km/h	5.8 sec

Fuel Consumption (USA and Canada)[‡]

City (USA)	14.0 mpg
Highway (USA)	24.2 mpg
City (Canada)	18.7 ltr/100 km
Highway (Canada)	11.4 ltr/100 km

Full technical specification details are available at www.rolls-roycemotorcars.com

*The engine is designed for octane grade 95 fuel; however, it may be run on fuel with a minimum octane grade of 91.

[†]Manufacturer's test results. Actual acceleration results may vary depending on specifications of the vehicle, road and environmental conditions, testing procedures and driving styles. These results should be used for comparison only and verification should not be attempted on public roads.

[‡]USA: EPA (Preliminary) – Use estimated mpg for comparison with other cars. Your mileage may vary with options, driving conditions, driving habits, the car's condition, speed and trip length. Actual highway mileage will probably be less.

Canada: The fuel-efficiency data was determined using approved Transport Canada Test Methods.

All illustrations and specifications are based upon current information available as at April 2010. Colours may vary. Rolls-Royce Motor Cars Limited reserves the right to make changes at any time without notice. Images may show optional equipment and specific country variants may differ. Quoted speed and acceleration may vary.

Model year designation on any particular model may be longer or shorter than 12 months. Rolls-Royce Motor Cars Limited makes all reasonable efforts to provide accurate information; however, there is no guarantee of accuracy. No liability is assumed by Rolls-Royce Motor Cars Limited. Additional information may be obtained from your Rolls-Royce Motor Cars authorised dealership.

US distributor: Rolls-Royce Motor Cars NA, LLC,
Woodcliff Lake, NJ 07677-7731.

© Copyright Rolls-Royce Motor Cars Limited 2010.
Not to be reproduced or transmitted. The Rolls-Royce name and logo are registered trade marks owned by or licensed to Rolls-Royce Motor Cars Limited.

www.rolls-roycemotorcars.com