

The new Saab **93**  
Convertible



A close-up, profile view of a woman with long, wavy blonde hair looking out of a car window. The background is a bright, hazy sunset or sunrise over a body of water, with a dark car interior visible in the foreground.

## The new Saab 9-3 Convertible – designed with Scandinavia in mind.

The new Saab 9-3 Convertible reveals a lot about us. Saab is rooted in the heart of Scandinavia, where nature and its elements are active participants in daily life. For us, this has meant a different approach to car design. Resulting in innovative concepts that give you sporty, versatile cars, powered with respect for the environment. While offering class-leading real-life safety, too. We call this responsible performance. Allowing you to enjoy genuine driving exhilaration. So take the new Saab 9-3 Convertible for a spin – and experience all the ways it's designed to perform.







# Performance art.

Open your eyes. Feel, touch, listen. At Saab, car design is all about encouraging the senses. All of them. Experience the new Saab 9-3 Convertible and you'll know what we're talking about. Inspired by Scandinavia, it's a true four-season, four-seater convertible that is at once sporty, elegant and playful. Designed not just to please your senses, but empower them.





## Pure inspiration.

With the new Saab 9-3 Convertible inspiration is not just around the corner, it's everywhere. In the sleek and sporty design that breathes purity and purpose. In the dynamic driver's seat. In the turbo power, spirited performance and cutting-edge chassis design. Plus all the advanced features that enhance driving excitement and convenience even further. Did we mention world-class real-life safety? Prepare for it all – top up or top down.





## Slip into the cockpit.

The new Saab 9-3 Convertible has been developed around you. The cockpit-like driver's environment is designed for close interaction between car and driver. Instruments and controls are positioned in logical groups and the most frequently used functions can be operated while your hands are still on the wheel.

**ComSense** – system designed to reduce distraction by briefly delaying warning messages when the brakes or turn indicators are activated. Helps you stay focused, for example when you turn, overtake or brake.

**Night Panel** – designed to facilitate night driving. Press a button and the instrument panel except for the speedometer fades out. When attention is needed the relevant instrument lights up.

**Profiler** – allows you to customise systems like the climate control, rain sensor, parking assistance and anti-theft alarm. Conveniently controlled via buttons integrated into the steering wheel.

**Electrically heated seats** – a Saab innovation. Extends the open-top season.

**SCC** – Saab Car Computer. Integrated in the speedometer. Shows outdoor temperature, fuel consumption and estimated distance on remaining fuel. Choose SCC 2 and you also get distance to destination, estimated time of arrival and speed warning.

**Voice control** – lets you control a range of audio and navigation functions in the Saab Infotainment Plus system with your voice. The separate Bluetooth™ phone integration system also includes voice control for the telephone.

**ACC** – Automatic Climate Control. Different temperatures for driver and front passenger. An electrostatic air filter excludes particles.

**Fully automatic soft-top** – raises and latches in only 20 seconds. Available with remote operation. Excellent insulation from outside noise, heat or cold. Heated glass rear window for improved all-weather visibility.





## Designed to perform.



Get behind the wheel of the new Saab 9-3 Convertible and experience true driving exhilaration. With instant power at hand, a chassis tuned for agile, sporty handling and innovative systems designed to assist your driving. The sensation of complete control is undeniable. While the sleek aerodynamics keeps your car firmly on the ground. All in all, giving you the fun-to-drive qualities that are also vital for safer driving.

# ReAXs



You'll feel it the moment you steer into a curve and press the accelerator in the new Saab 9-3 Convertible. ReAXs in action – a Saab-unique chassis system that allows the car to steer with all four wheels so that it can cut through bends like a carving ski. Sure, this agile and sporty handling gives an inspiring sensation, but it's also vital to safer driving. Now add the new bi-xenon cornering headlights and you have lights that turn as you do, helping to guide you through every bend.

**ESP** – Electronic Stability Program. With smooth, progressive action. Helps reduce skidding on slippery surfaces. Brakes one or more wheels and reduces the throttle opening if necessary.

**CBC** – Cornering Brake Control. Reduces the tendency to pull to one side when you turn and brake simultaneously. Integrated in the ESP system.

**TCS** – Traction Control System. Helps prevent the driven wheels from spinning on slippery surfaces.

**EBD** – Electronic Brake-force Distribution. Balances the brake force between the front and rear depending on load.

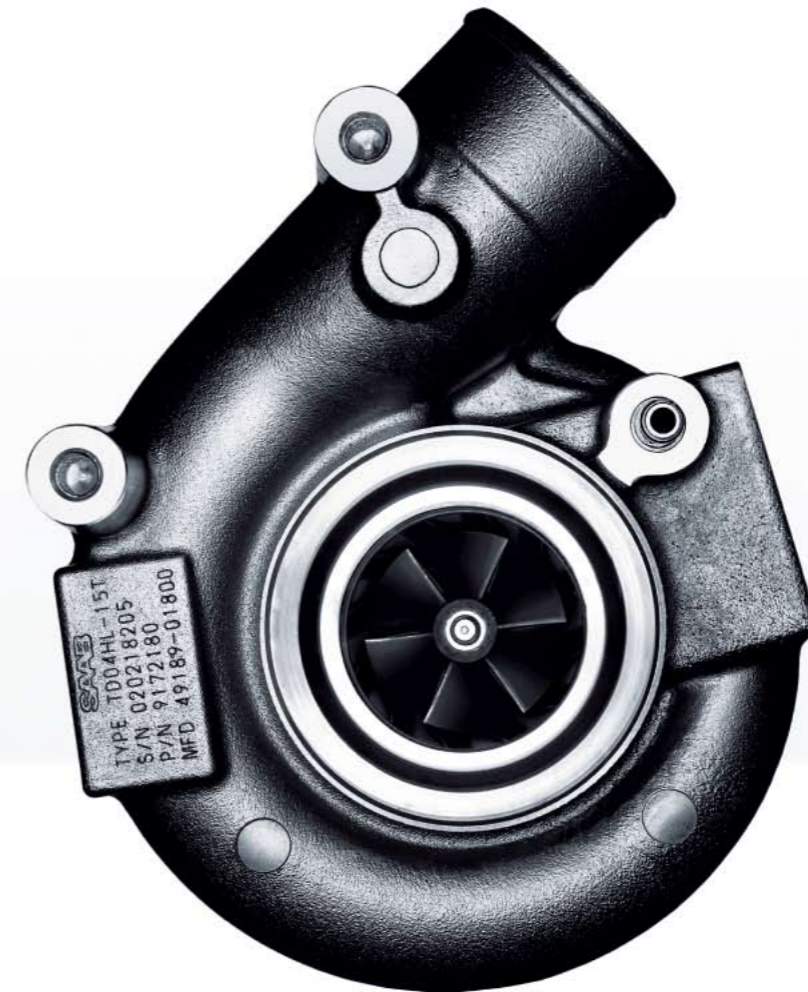
**EBA** – Emergency Brake Assist. Amplifies braking force if you press the brake pedal quickly.



# Petrol, diesel or bioethanol? It's up to you.



At Saab, we have a passion for developing intelligent power. Efficient engines that give you the power and vitality you're looking for. From advanced petrol engines and low-emission turbodiesels to Saab BioPower – a revolutionary innovation with a cleaner conscience. Rest assured, whatever engine you choose for your new Saab 9-3 Convertible, you can expect plenty of on-demand exhilaration.



#### **Petrol engines.**

The new Saab 9-3 Convertible is an all-turbo experience. No surprise then that even the 1.8t engine gives you the sort of torque you would expect from a 2.5-litre normally aspirated engine, but at lower revs. The more powerful engines naturally provide still more punch, particularly once the revs rise.

#### **Low-emission turbodiesels.**

With our advanced turbodiesels you get high performance combined with low fuel consumption and low emissions. The new powerful 180 hp TTiD engine featuring a Two-stage Turbo is a perfect example. When mated to manual transmission, it offers a massive 400 Nm of torque.

#### **Saab BioPower.**

Saab BioPower is a revolutionary innovation. Fill up with bioethanol (E85) fuel and you'll get even more power. At the same time, you'll help substantially reduce fossil CO<sub>2</sub> emissions compared with running on petrol. In fact, Saab BioPower engines emit just 35–50 g/km\* fossil CO<sub>2</sub> when running on E85 bioethanol fuel. If E85 is not available you can simply fill up with petrol, or any mix of the two.

\*Fossil CO<sub>2</sub> emissions are the CO<sub>2</sub> emissions emanating from the 15% petrol included in E85. The figure varies with the model and is based on calculations for Saab BioPower engines when running on E85.



## Release the power of nature.

Saab BioPower is the first flex-fuel solution to produce significantly more power when running on bioethanol. Giving you inspiring performance – with a cleaner conscience. Our advanced Turbo engine technologies take advantage of the higher octane rating of E85, making the engine more efficient. The result? Fuel your new Saab 9-3 BioPower Convertible with E85 and you'll get 25 extra horsepower and an inspiring rise in torque. Count on faster response for quicker overtaking. And sportier performance that encourages you to always fuel up with E85. To add to the pleasure, Saab BioPower engines emit just 35–50 g/km\* fossil CO<sub>2</sub> when running on E85 bioethanol fuel.

\*Fossil CO<sub>2</sub> emissions are the CO<sub>2</sub> emissions emanating from the 15% petrol included in E85. The figure varies with the model and is based on calculations for Saab BioPower engines when running on E85.



# BioPower





# The powerful difference.

Saab revolutionized turbo technology 30 years ago – and we have been refining it ever since. Try any Saab 9-3 Convertible engine and experience the perfection of turbo power. What you get is a fuel-efficient engine that responds when necessary with the inspiring performance of a far larger engine. The new advanced 180 hp TTDi turbodiesel is a perfect example. It delivers a massive 400 Nm of torque, when mated to the manual 6-speed transmission. We call it rightsizing. In other words, efficient use of energy with a surprisingly powerful result.

## 1.8t 150 hp/240 Nm

	<b>M5/A5</b>
Top speed, km/h	205/200
0–100 km/h, sec	10.5/11.5
80–120 km/h, sec*	17.5/–
L/100 km, city	11.7/13.4
L/100 km, highway	6.7/7.6
L/100 km, combined	8.6/9.7
CO <sub>2</sub> , g/km, combined	206/233

## 2.0t 175 hp/265 Nm

	<b>M6/A5</b>
Top speed, km/h	220/215
0–100 km/h, sec	9.0/10.5
80–120 km/h, sec*	12.5/–
L/100 km, city	11.8/13.1
L/100 km, highway	6.6/7.7
L/100 km, combined	8.5/9.7
CO <sub>2</sub> , g/km, combined	203/232

## 2.0 Turbo 210 hp/300 Nm

	<b>M6/A5</b>
Top speed, km/h	230/225
0–100 km/h, sec	8.0/9.5
80–120 km/h, sec*	11.5/–
L/100 km, city	12.0/14.0
L/100 km, highway	7.1/7.6
L/100 km, combined	8.9/10.0
CO <sub>2</sub> , g/km, combined	213/235

## 2.8 V6 Turbo 255 hp/350 Nm

	<b>M6/A6</b>
Top speed, km/h	245/240
0–100 km/h, sec	7.2/8.1
80–120 km/h, sec*	8.6/–
L/100 km, city	15.7/17.3
L/100 km, highway	7.6/7.5
L/100 km, combined	10.6/11.1
CO <sub>2</sub> , g/km, combined	254/266

## 1.9 TiD 150 hp/320 Nm

	<b>M6/A6</b>
Top speed, km/h	200/195
0–100 km/h, sec	10.4/11.8
80–120 km/h, sec*	11.0/–
L/100 km, city	8.4/9.8
L/100 km, highway	5.1/5.4
L/100 km, combined	6.3/7.0
CO <sub>2</sub> , g/km, combined	169/189

## Aero/1.9 TTDi\*\*\* 180 hp/400 Nm (M6)

	<b>M6/A6</b>
Top speed, km/h	220/215
0–100 km/h, sec	9.1/9.5
80–120 km/h, sec*	9.1/–
L/100 km, city	–/–
L/100 km, highway	–/–
L/100 km, combined	–/–
CO <sub>2</sub> , g/km, combined	–/–

## 1.8t BioPower\*\* 175 hp/265 Nm

	<b>M5/A5</b>
Top speed, km/h	215/210
0–100 km/h, sec	8.9/10.1
80–120 km/h, sec*	15.9/–
L/100 km, city	–/–
L/100 km, highway	–/–
L/100 km, combined	–/–
CO <sub>2</sub> , g/km, combined	–/–

## 2.0t BioPower\*\* 200 hp/300 Nm

	<b>M6/A5</b>
Top speed, km/h	225/220
0–100 km/h, sec	8.2/9.3
80–120 km/h, sec*	11.2/–
L/100 km, city	–/–
L/100 km, highway	–/–
L/100 km, combined	–/–
CO <sub>2</sub> , g/km, combined	–/–

Fuel consumption and emission figures measured according to the 1999/100 EC directive.

\* 5th gear, manual.

\*\* Available on certain markets. Performance figures with E85 fuel.

There are as yet no agreed EC directives governing the measurement of CO<sub>2</sub> emissions from bioethanol engines. We can therefore not show any detailed emissions figures for Saab BioPower engines.

Please visit [www.saab.com](http://www.saab.com) for the latest information.

\*\*\* Available later during the model year.



# Engine and driver control.

## Standard equipment

- Turbocharger and intercooler
- Manual 6-speed gearbox (5-speed on 1.8t)
- ReAxs chassis geometry system
- Anti-lock Braking System (ABS)
- Traction Control System (TCS)

## Engine alternatives

- 1.8t (150 hp/110 kW/240 Nm)
- 2.0t (175 hp/129 kW/265 Nm)
- 2.0 Turbo (210 hp/154 kW/300 Nm)
- 2.8 V6 Turbo (255 hp/187 kW/350 Nm)
- 1.9 TiD (150 hp/110 kW/320 Nm)
- 1.9 TTiD\* (180 hp/132 kW/400 Nm)
- 1.8t BioPower (175 hp/129 kW/265 Nm)
- 2.0t BioPower (200 hp/147 kW/300 Nm)

## Optional equipment

- Sentronic 5-speed automatic with SportDrive (1.8t, 2.0t, 2.0 Turbo)
- Sentronic 6-speed automatic with SportDrive (V6, TiD and TTiD)
- Sports chassis (standard on Aero)
- Electronic Stability Program (ESP®) (standard on Aero)
- Bi-xenon headlights
- Bi-xenon cornering headlights
- Integrated front foglights (standard on Aero)
- Auto-dimming mirrors
- Rain sensor for windscreen wipers
- Saab Parking Assistance (SPA)

\*Available later during the model year.

For more detailed information, please see the separate brochure: Saab 9-3 Convertible Equipment and Price. Available at your Saab dealer.

**The V6 Turbo** – combines extremely high torque with refinement across the rev range. Includes features such as variable inlet cam phasers, 24 valves, roller cam followers, sinter-forged connecting rods and double-wall exhaust manifolds.

**BioPower engines** – give more power when running on bioethanol (E85) instead of petrol. In the 1.8t BioPower output rises from 150 to 175 hp, torque is increased from 240 to 265 Nm. In the 2.0t BioPower output soars from 175 to 200 hp and torque is increased from 265 to 300 Nm. (Available on certain markets.)

**Bioethanol (E85)** – a renewable fuel produced from a variety of biomass sources such as forestry residue, sugar cane and sugar beet. When used in vehicles, it is mixed with 15 per cent petrol to improve cold-starting ability. Driving on E85 instead of regular petrol substantially reduces fossil carbon dioxide (CO<sub>2</sub>) emissions.

**The new 1.9 TTiD** – advanced 180 hp turbodiesel with inspiringly low fuel consumption and low CO<sub>2</sub> emissions.

**Saab Trionic** – one of the world's most advanced management systems for 4-cylinder turbo petrol engines, developed by Saab. Analyses combustion through ionisation measurement.

**Powerful brakes** – with robustly dimensioned discs, ventilated at the front. The most powerful models have extra-large ventilated discs front and rear.



**Sentronic 6-speed** – automatic transmission that also allows manual gearshifting. Includes SportDrive function. Also available with paddles on the steering wheel.

**SportDrive** – activated on the instrument panel on cars with Sentronic transmission. Calibrated to force earlier downshift when braking. Also holds the gear longer during acceleration and engine braking. Provides faster response and more control during active driving.

**Chassis tuning** – springs, shock absorbers and anti-roll bars are fine-tuned for a crisp, firm response.

**Auto-dimming mirrors** – automatically dim reflecting light from behind. Available for the interior and exterior mirrors.

**Bi-xenon cornering headlights** – with an electronically controlled system that turns the headlights when you turn the steering wheel. Help further improve visibility on winding roads. Provide 100 per cent more daylight-like light, compared to halogen lights.



**Rain sensor** – starts the windscreen wipers automatically. Adjusts wiper speed to suit the rain's intensity.

**Multi-link rear axle** – with four links per wheel. The special toe links also make the car toe-in slightly when braking from high speed, helping to keep the car steadily on course.

**SPA** – Saab Parking Assistance. Alerts you when you get close to an object behind the car. Helps when parking in tight spots.



# Aero

Ready for the most intense Saab open-top driving experience ever? Because the unique design and sporty stance of the new Saab 9-3 Aero Convertible give you just that – and much more. Expect sharper handling, more spirit and impressive reserves of speed and power. A high-performance sensation, powered by a V6 Turbo engine or the new Aero TTiD engine. Ideal for tackling the twists and turns and slopes of the road ahead with vigour as you sit firmly in a body-hugging sports seat. Nothing beats it – ready or not.

#### Looks and sound.

The new Saab 9-3 Aero Convertible comes with unique front and rear design, 17" alloy wheels, performance tyres, integrated foglights and dual sports exhaust. 18" alloy wheels pictured are available as option.



# Aero in every detail.

The power at hand in the new Saab 9-3 Aero Convertible is exceptional. No matter if you go for petrol or diesel. The 255 hp V6 Turbo engine offers instant response and a massive 350 Nm of torque for effortless performance all the way to the red line. And the new high-response 180 hp Aero TTiD with manual 6-speed transmission pumps out no less than 400 Nm of inspiring torque – adding a whole new dimension to overtaking.

#### Performance brakes.

Powerful extra-large ventilated front and rear disc brakes. Specially designed for the Aero.

#### Sports chassis.

Tuned to provide the Aero models with enhanced stability. Firmer springs and stiffer shock absorbers mean better body control, cornering and braking.



**V6  
Turbo**

The advanced all-aluminium 255 hp V6 Turbo engine is equipped with a twin-scroll turbocharger featuring a specially designed turbine housing for quicker response across a wider rev range.

**Aero  
TTiD**

The new 180 hp Aero TTiD engine is equipped with advanced Two-stage Turbo technology providing amazing response and acceleration from low revs all the way up the rev range.



The image shows two black leather car seats from a rear perspective, set against a bright blue sky with wispy white clouds. The seats are positioned on the left and right sides of the frame, with the central text and other elements on the right.

# Your point of view.

You deserve a seat of power. A seat that gives you greater control and comfort and that can actually contribute to better driving. At Saab, we have a long tradition of developing innovative seat solutions that integrate function and ergonomics with warmth and inspiration. The comfortable yet firm driver's seat in the Saab 9-3 Convertible is purposely designed to convey signals from the car to support a more intuitive driving experience. Giving you greater confidence and control, without tiring – and a seat to enjoy.

#### **SAHR.**

Award-winning active head restraints fitted in the front seats. A Saab innovation that reduces the risk of serious neck injuries by up to 75%\* in rear-end collisions.

#### **Premium natural leather sports seats.**

Touch and you'll feel it. Sit and you'll sense it. The amazing quality sensation in our new top-of-the-line all-leather sports seats. Featuring exclusive leathers with different patterns that create inspiring contrasts, along with thick stitching that accentuates the unique design. Prepare for a very special driving experience. Every day.

\* Published in The Journal of TRAUMA®, Volume 51, No 5, November 2001.





## What's your next move?

Get even more out of life with the new all-inspiring Saab 9-3 Convertible. Smart versatility is everywhere, making this true four-season, four-seater surprisingly well equipped for pretty much whatever. The creative CargoSET and comfort opening functions are perfect examples. You can also fine-tune your car by selecting from an exciting range of Saab accessories. Adding new dimensions in flexibility and convenience – whatever your next move.



**Comfort opening** – press a button on the key and you'll lower the top and all the windows, unlock the doors and de-activate the anti-theft alarm in a single operation. All in just 20 seconds.

**CargoSET** – Self Expanding Trunk. Automatically expands the luggage capacity to 352 litres as you raise the top.



# Just go.



**Wind deflector** – easy to fit and to fold for convenient storage. Reduces back draught and enhances comfort when driving with the top down.

**Smart Slot** – a storage system for exchangeable accessories. Neatly integrated in the centre console.

**Bike holder, towbar-mounted** – space for two bikes (three with an adapter). Fold-down function for easy access to the luggage compartment. Number plate holder and lighting.







## Coupé on demand.

Want to drive under cover? With the innovative soft-top on the new Saab 9-3 Convertible you can do it quickly, easily and in style. In fact, with the roof up, you'll probably forget you're driving a convertible. It's swift and smooth to operate, and silent and steady – offering the ambience of a comfortable and sleek coupe. Inside, the light coloured roof adds to the bright, spacious feeling and contributes to a totally integrated interior experience.



**A no-compromise rear seat** – space for grown-ups, easy entrance, retractable head restraints and seatbelts with pre-tensioners and load limiters.

**Soft-top colours** – purely a matter of personal taste. Choose between three colours for your new Saab 9-3 Convertible: Black, Blue and Sand.

**Triple-insulated top** – extremely sturdy, stable and smooth. Provides excellent insulation from outside noise, heat and cold. The heated glass rear window improves visibility in all weather conditions.





# The car can find the way. Even when you want to lose yourself.

Whether you're looking for the best possible route, travel tips or just a little tranquillity, you can rely on the new Saab 9-3 Convertible to get you there. The advanced infotainment system literally brings it all together. Giving you music, navigation and the ability to keep in touch, easily and intuitively. So enjoy the drive – and your final destination.

The knowledge to steer through life is built into the navigation system. Discover new locations for your favourite activity, including remote places you've probably never heard of.





## At the centre of it all.

You're in command. Just plug in your MP3 player and be inspired by the powerful sound system. Your Bluetooth™-enabled mobile connects automatically to the handsfree function. And for extra convenience, you can manage the phone, radio and navigation by voice control. The car confirms your requests by voice and guides you along the way. So you never miss a beat.

**DVD/GPS navigation** – included in Saab Infotainment Plus. Voice instructions and easy-to-read symbols on the large colour screen. Voice control makes the navigation system very convenient to use.

**TMC** – automatically updates your route if there is a traffic disruption.

**Bluetooth™ phone integration system** – automatically connects your Bluetooth™-enabled phone with the infotainment system. Allows you to operate the phone with the buttons on the steering wheel or by voice control.

**Voice control** – push a button in the steering wheel and speak your command. You get guidance and confirmation of your request by voice. Included in Saab Infotainment Plus and the Bluetooth™ phone integration system.

**MP3/AUX connection** – on the front panel of the infotainment system. Allows you to plug your MP3 player or other portable audio equipment into the car's audio system.





# Versatility and infotainment.

## Standard equipment

- Saab Infotainment
- Premium 70 Sound System
- MP3/AUX connection
- Audio steering wheels controls
- CargoSET (Self Expanding Trunk)

## Optional equipment and accessories, examples

- Saab Infotainment with CD changer
- Saab Infotainment Plus with navigation and voice control
- Premium 150 Sound System
- Prestige 300 Sound System
- Bluetooth™ phone integration system with voice control
- Telephone holder
- CD storage case
- Comfort opening
- Towbars
- Smart Slot accessories
- Cup holders
- Wind deflector

Read more about how you can customise your Saab 9-3 in the Saab Genuine Accessories brochure.

For more detailed information, please see the separate brochure: Saab 9-3 Convertible Equipment and Price. Available at your Saab dealer.

Bluetooth™ is a trademark owned by Bluetooth SIG, Inc., USA and licensed to Saab Automobile AB.



**Saab Infotainment** – includes AM/FM stereo tuner with RDS, MP3-compatible CD player and AUX connection for your MP3 player and other portable audio equipment. Can be combined with the Bluetooth™ phone integration system.

**Premium 150 Sound System** – seven loudspeakers including a front centre speaker that improves the sound distribution. Total amplifier output of 150 W.

**Prestige 300 Sound System** – ten loudspeakers including a front centre speaker that improves the sound distribution and a subwoofer that further enhances the bass. Total amplifier output of 300 W.

**Cup holders** – one in the centre console compartment, one that unfolds from the fascia.

**Towbar** – choose between a fixed and an easily removed/lockable towbar.

## Saab Infotainment CD Changer

– includes AM/FM stereo tuner with RDS, MP3-compatible 6-disc single-slot fascia-mounted CD changer and AUX connection for your MP3 player and other portable audio equipment. Can be combined with the Bluetooth™ phone integration system.



**CD storage case** – keeps six discs protected. Easy to take with you when you leave the car.

## Saab Infotainment Plus

– includes AM/FM stereo tuner with RDS, MP3-compatible CD player, 6.5" colour touchscreen and navigation. Voice-controlled. AUX connection for your MP3 player and other portable audio equipment. Can be combined with the Bluetooth™ phone integration system.

**Telephone holder** – in the centre console compartment. Connects your phone to the exterior antenna and charges the phone while on the road. For combination with the Bluetooth™ phone integration system.



**Luggage capacity** – the CargoSET function automatically expands the luggage capacity as you raise the top. The space occupied by the folded soft-top becomes available for luggage – to the tune of no less than 352 litres. However, there's plenty of space even with the roof lowered.

**Scratch protection/seating mat** – rolls out from the luggage compartment to protect the bumper. Easily removed for use as a waterproof seating mat.



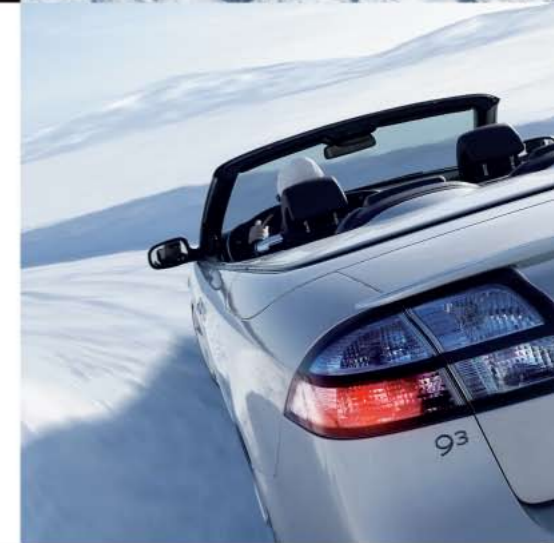
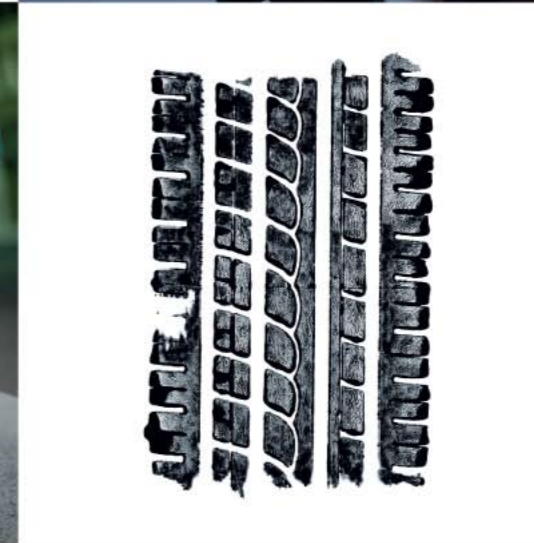
# Safety for real.

Saab cars are frequently ranked among the best in the world in various safety surveys. Yet our safety work is much more than award-winning. It focuses on what actually happens on the road in real-life conditions. After all, our job is to protect real people, not just dummies in a laboratory. This real-life philosophy has led to a range of safety innovations over the years. The most important result of all, however, is the impressive real-life safety of our cars. Out on the road.

**Maximum rating: Good** – Saab 9-3 Convertible. For Saab Active Head Restraints (SAHR) in Britain's Thatcham insurance research centre crash tests.

**Five stars** – Saab 9-3 Convertible. Top rating in the European New Car Assessment Program (EuroNCAP) crash tests.

**Top Safety Pick Award** – Saab 9-3 Convertible. Top rating in the US Insurance Institute for Highway Safety (IIHS) front, side and rear crash tests, including seat/head restraint protection, roll-over pop-up bars and the vehicle's electronic stability control (2007).





# DynaCage



**Dual-stage front airbags** – designed to register the crash force and monitor whether the belt is being used. The system adjusts airbag deployment to suit, either to the maximum or with lower pressure.

**Integrated front seatbelts** – where the belts are mounted on the frame of the seats, giving better belt geometry irrespective of the seat position.

**Front structure** – with three load paths per side. Designed to protect in frontal crashes from a variety of angles and objects.

**Head/thorax side airbags** – in the front seats. Two-stage units that help protect both the thorax and head.

**SAHR** – Saab Active Head Restraints, front. Help reduce serious neck injuries by up to 75%\* in rear-end collisions.

**DynaCage** – roll-over protection system by means of the heavily reinforced windscreen frame, the pop-up rollbars and the seatbelt pre-tensioners, designed to be activated by the system's sensor when a roll-over is detected.

**Passenger compartment** – with a sturdy structure of longitudinal and transverse beams designed to protect against crash forces.

\* Published in The Journal of TRAUMA\*, Volume 51, No 5, November 2001.





Aero



Linear

Vector

# Make your move.

Tailoring your very own Saab 9-3 Convertible is easy and inspiring. Choose between our two Saab Forms – Linear and Vector. Or for true high performance and sporty design head straight for the Aero model. Once you've found your car, you can tailor it exactly as you like with options and accessories. Explore all the possibilities and design your own car at [www.saab.com](http://www.saab.com).





# Linear

The very essence of the Saab design philosophy – timeless Scandinavian simplicity. Clean lines, modern and with a discreet edge.

## Examples of equipment

16" steel wheels with wheel covers • Leatherette/Hydroblox textile upholstery  
 Leather-trim steering wheel • Saab Infotainment with Premium 70 Sound System  
 Audio steering wheel controls • Automatic Climate Control (ACC)



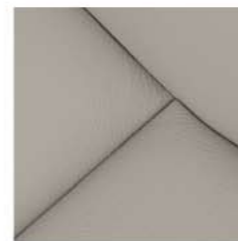
Leatherette/Hydroblox textile, Black/Black



Leatherette/Hydroblox textile Parchment/Black



Premium natural leather sport, Black (Optional)



Premium natural leather sport, Parchment (Optional)



Premium natural leather sport, Black/Shark (Optional)



Leather sport, Black (Optional)



Leather sport, Parchment (Optional)



Burled wood-effect trim (Optional)

Leather upholstery refers to leather seating surfaces.







# Vector

Exudes performance and dynamics for even more inspired driving.  
 The metallic-effect trim accentuates the sporty spirit that pervades the entire car.

**Examples of equipment**

- 17" alloy wheels, 5-spoke
- Metallic-effect trim, centre console/glove box
- Leather sports seats
- Sports leather-trim steering wheel
- Metallic-effect trim centre console/glove box
- Saab Infotainment with Premium 70 Sound System
- Automatic Climate Control (ACC)



Leather sport, Black



Leather sport, Parchment



Premium natural leather sport, Black (Optional)



Premium natural leather sport, Parchment (Optional)



Premium natural leather sport, Black/Shark (Optional)



Leather accent sport, Black (Optional)



Leather accent sport, Parchment (Optional)



Burled wood-effect trim (Optional)

Leather upholstery refers to leather seating surfaces.







# Aero

Our top-of-the-line high-performance model with a unique sports interior and matching equipment level to offer the most intense Saab driving experience.

**Examples of equipment**

17" alloy wheels, 5-spoke Low Split • Sports chassis • Electronic Stability Program (ESP®) • Performance brakes  
 Dual sports exhaust pipes • Integrated front foglights • Aero front spoiler with matt metal-finish inserts around the foglights • Aero rear bumper • Metallic-effect trim, centre console/glove box • Leather sports seats  
 Aero sports leather-trim steering wheel (optional) • Saab Infotainment with Premium 70 Sound System  
 Automatic Climate Control (ACC)



Leather sport, Black

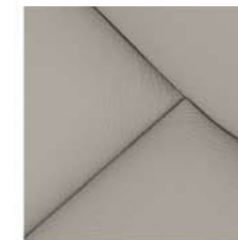


Leather sport, Parchment

Leather upholstery refers to leather seating surfaces.



Premium natural leather sport, Black (Optional)



Premium natural leather sport, Parchment (Optional)



Premium natural leather sport, Black/Shark (Optional)



Leather accent sport, Black (Optional)



Leather accent sport, Parchment (Optional)



Burled wood-effect trim (Optional)







## Inspiring ownership.

Buying and owning the new Saab 9-3 Convertible should be as inspirational as driving it. So we've designed a wide range of facilities that make it easy, secure and economical for you to own and drive your car. For more information, simply ask your Saab dealer or visit [www.saab.com](http://www.saab.com).

**Saab Finance** – offers financing plans tailored to suit your individual requirements. For private and company customers.

**Warranties** – a new-car warranty and a ten-year anti-corrosion warranty. Ask your Saab dealer for the exact conditions applicable on your market.

**Saab 9-3 Convertible Equipment and Price** – a separate brochure with detailed information about all the Saab 9-3 Convertible options. Available at your Saab dealer.

**Saab Genuine Accessories** – let you fine-tune the car to exactly suit your needs. Find out more in our accessories brochure, available at your Saab dealer.

**Saab Insurance** – simplifies contacts if your car is damaged. Your Saab dealer will take care of everything from inspection to damage assessment and repairs.

**Saab Assistance** – offers quick help round the clock in most of Europe. In the unlikely event of a breakdown or serious technical problem, we'll help you on site.

**Saab Direct** – provides free telephone information on matters relating to Saab. Offers help if you should have a problem while on the road.

**Saab IDS** – International & Diplomat Sales. Allows expatriates, military personnel abroad and members of the diplomatic corps to buy a Saab on favourable terms. More information on [www.saab.com/ids](http://www.saab.com/ids).

**Recycling** – Saab cars are designed for recycling. For more information about recycling of End of Life Vehicles (ELVs) and take-back locations, go to [www.saab.com](http://www.saab.com).

**Saab-i newsletter** – sign up for the latest news, exciting offers and exclusive materials from Saab at [www.saab.com](http://www.saab.com).





V-spoke 18×7½" (ALU 73)



5-spoke Claw 18×7½"



10-spoke 18×7½" (ALU 65)



Inca 18×7½"



5-spoke Star 17×7½"



5-spoke 17×7½" (ALU 59)



5-spoke Y 17×7" (ALU 45)



5-spoke Low Split 17×7" (ALU 71)



5-spoke Double Bridge 17×7½"



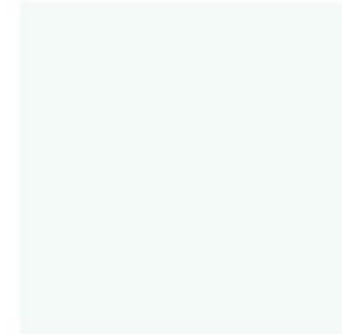
5-spoke Twin 17×7" (ALU 50)



5-spoke Open 16×6½" (ALU 57)



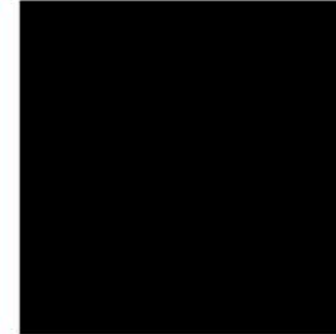
14-spoke 16×6½" (ALU 72)



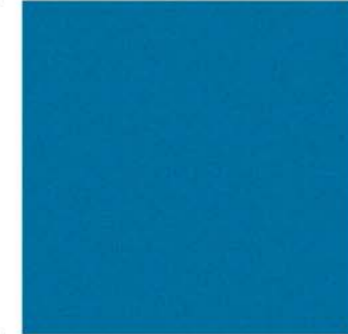
1 Arctic White



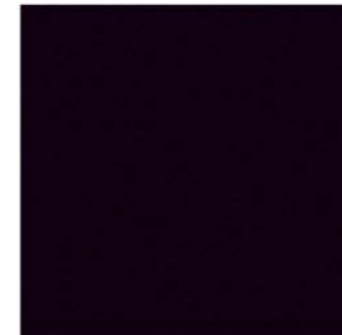
2 Laser Red



3 Black



4 Electric Blue metallic



5 Jet Black metallic



6 Snow Silver metallic



7 Steel Grey metallic



8 Nocturne Blue metallic



9 Smoke Beige metallic



10 Ice Blue metallic



11 Parchment Silver metallic



12 Fusion Blue metallic

Due to limitations in the printing process, the colours shown may differ slightly from the actual paint colour.





[www.saab.com](http://www.saab.com)

**Int. Eng.** Art. No. **32001762** Printed in Germany. Copyright Saab Automobile AB, Trollhättan Sweden, 2007. This brochure is printed on chlorine-free, recyclable paper. Particulars and illustrations in this brochure are based on the information that was valid at the time of final editing (June 2007). The model range, technical specifications, services and equipment may vary from one market to another and may be altered without prior notice. Pictures may show cars fitted with optional extra equipment.

Please consult your Saab dealer for the latest information.

Saab AB and Saab Automobile AB are today two unaffiliated companies with a common history. Saab Automobile AB manufactures cars and is a subsidiary of General Motors Corporation. Saab AB has its main operations in defence, aviation, space technology and civil security. For more information about Saab AB, please visit [www.saabgroup.com](http://www.saabgroup.com).