

Saab 95



With a Scandinavian mindset.

Saab is rooted in the heart of Scandinavia. Where nature and its elements are active participants in daily life. So it's no surprise that we have a different approach to car design. Resulting in innovative concepts that give you sporty, versatile cars, powered with respect for the environment. While offering class-leading real-life safety, too. We call this responsible performance. Allowing you to enjoy true driving exhilaration everyday. Like in the Saab 9-5. Take it for a spin and the excitement comes naturally.





Ready to respond.



The design says it all. Sleek, aerodynamic, inspiring and purposeful. Drive the Saab 9-5 and experience what it's like in action. The turbo power, the agility and the impressive response – fine-tuned for fast bends and long-distance comfort. All in a spacious car filled with ingenious utility and class-leading real-life safety. Sedan or SportCombi? Your call. Both are designed to let you actively engage – every day on the road.

The beauty of
advanced aerodynamics.





Ready to pilot.

The moment you take off in a Saab 9-5 you'll sense that special spirit. Echoing the inspiration obtained from our unique aircraft heritage. A focused behind-the-wheel experience in a cockpit-like driver's environment. With instant power at hand and a sensational feeling of control. Supported by innovative systems designed to assist your driving. Intuitive, reassuring and rewarding. And above all, fun-to-drive qualities that are also vital for safer driving.



Sports seats.

The body-hugging sports seats available for the Saab 9-5 feature pronounced side and thigh support for enthusiastic driving. And like all Saab front seats they feature SAHR – our award-winning active head restraints.



Ventilated sports seats.

Saab was the first car manufacturer to introduce heated seats. No surprise then that the Saab 9-5 was the first car with ventilated seats. Perforated leather and fans in the backrest and seat squab help keep your body cool.

Premium natural leather sports seats.

Touch and you'll feel it. Sit and you'll sense it. The amazing quality sensation in our new top-of-the-line all-leather sports seats. Featuring exclusive leathers with different patterns that create inspiring contrasts, along with thick stitching that accentuates the unique design. Prepare for a very special driving experience. Every day.



Seat of power.

Can a seat affect the way you drive? Absolutely. That's why Saab has a history of developing class-leading seats with innovative world-firsts. Seats that integrate function and ergonomics with warmth and inspiration. Like in the Saab 9-5. The comfortable yet firm driver's seat is purposely designed to convey signals from the car to support a more intuitive driving experience. Allowing for keen contact between you, the car and the road. All so you can drive with greater confidence and control, without tiring. For the ultimate behind-the-wheel experience, opt for our new top-of-the-line Premium natural leather sports seats. Once seated you'll probably wish you had a long, twisting road ahead.



The cockpit.

The ergonomic driver's environment in the Saab 9-5 is perfectly designed around you, like a cockpit. The most frequently used controls are within convenient reach. You have a commanding view of the instruments and the road ahead. The cockpit also integrates innovative solutions like the ComSense concept and the unique Saab Night Panel – features designed to help you stay a more focused driver. And therefore a safer driver.

ComSense – system designed to reduce distraction by briefly delaying warning messages when the brakes or turn indicators are activated. Helps you stay focused, for example when you turn, overtake or brake.

Night Panel – designed to facilitate night driving. Press a button and the instrument panel except for the speedometer fades out. When attention is needed the relevant instrument lights up.

Steering wheel controls – for the infotainment system and SCC. Gearshifting paddles for the optional Sentronic transmission (not TiD).

SCC – Saab Car Computer. Integrated in the speedometer. Shows outdoor temperature. Choose SCC 2 and you also get fuel consumption, estimated distance on remaining fuel, distance to destination, estimated time of arrival and speed warning. (Included in Driving package.)

Cruise control – keeps the car at the speed you set. (Included in Driving package.)

ACC – Automatic Climate Control. Different temperatures for driver and front passenger. Electrostatic/carbon filter cleans the incoming air from particles down to 0.004 mm in size. Effective against dust, soot, pollen, certain bacteria and several harmful gases.

SPA – Saab Parking Assistance. Alerts you when you get close to an object behind the car. Helps when parking in tight spots. (Optional)

Some call us control freaks.

It only takes a few minutes in the Saab 9-5 to appreciate its agility, sportiness and consistent behaviour. Obvious fun-to-drive factors. But for us, outstanding roadholding and controlled handling are also essentials for impressive driving safety. The Saab 9-5 features a well-balanced and responsive chassis, fine-tuned for sharp handling combined with exceptional on-road comfort. In addition, the advanced Electronic Stability Program and a range of other electronic systems help boost driving excitement and safety even further.



Driver control.

Standard equipment

- Front McPherson struts
- Multi-link rear axle
- Twin tube gas shock absorbers all round
- Front and rear anti-roll bars
- Disc brakes all round, ventilated at the front
- Anti-lock Braking System (ABS)
- Electronic Brake-force Distribution (EBD)
- Traction Control System (TCS)
- Electronic Stability Program (ESP®)
- Power-assisted rack and pinion steering
- Headlight levelling control on facia (automatic with bi-xenon lights)
- Windscreen wipers with variable speed
- High-pressure windscreen washers
- Rear window wiper/washer (SportCombi only)
- Heated exterior rear-view mirrors
- Steering wheel adjustable for reach and rake

Optional equipment

- Lowered sports chassis (standard on Aero)
- Body-levelling (SportCombi only)
- Bi-xenon headlights
- High-pressure headlight washers
- Integrated front foglights (standard on Aero)
- Auto-dimming mirrors
- Foldable door mirrors
- Rain sensor for windscreen wipers
- Saab Parking Assistance (SPA)
- Tyre Pressure Monitoring System (TPMS)

For more detailed information, please see the separate brochure: Saab 9-5 Equipment and Price. Available at your Saab dealer.

Powerful brakes – with robustly dimensioned discs, ventilated at the front. The most powerful models have extra-large ventilated discs all round and more powerful rear callipers.



ABS – Anti-lock Braking System. Designed to allow firm braking with steering ability.

EBD – Electronic Brake-force Distribution. Designed to distribute brake force between the front and rear wheels depending on how the car is loaded.

TCS – Traction Control System. Helps reduce spinning on slippery surfaces by distributing drive force to the wheel with the best grip. Integrated in the ESP® system.

ESP® – Electronic Stability Program. Helps reduce skidding and improves steering ability on slippery surfaces. Brakes one or more wheels and, if necessary, reduces the throttle opening. If desired, ESP® can be switched off.

Auto-dimming mirrors – automatically dim reflecting light from behind. Available for the interior and exterior mirrors.

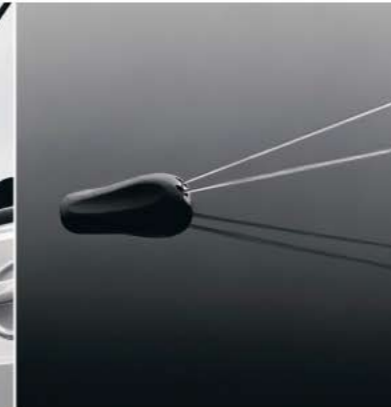


TPMS – Tyre Pressure Monitoring System. Gives a warning message in the Saab Car Computer displaying which tyre has low pressure.



Rain sensor – starts the windscreen wipers automatically. Adjusts wiper speed to suit the rain's intensity.

High-pressure washers – three washer nozzles, each with two high-pressure jets, help keep the windscreen clean.



Bi-xenon headlights – provide 100 per cent more daylight-like light compared to halogen lights. With auto-adjusting beam length as you drive. On high beam, the bi-xenon lights are supplemented with halogen lights to further extend the beam.

Headlight washers – powerful high-pressure jets help keep the lenses clean.



Multi-link rear axle – with independent suspension and three links for each wheel designed to provide precise wheel control. Gives a certain degree of passive steering in curves and alerts you as you approach the limits of grip.

Chassis tuning – springs, shock absorbers and anti-roll bars are fine-tuned for a crisp, firm response.

Sports chassis – lowered 10 mm to provide enhanced stability and agility. Firmer springs and stiffer shock absorbers mean better body control, cornering and braking.

Body-levelling – automatically keeps the car at optimal height when carrying heavy loads or when towing. (SportCombi only)



Intelligent power? Experience Saab Turbo engine technology.

Press the accelerator in the Saab 9-5 and you'll experience the perfection of inspiring yet responsible performance. A result of our revolutionary turbo engine technology combined with cutting-edge expertise in developing powerful yet efficient engines with respect for nature. For example the low-emission 150 hp turbodiesel and our innovative BioPower engines running on bioethanol. Whatever your preference, you can count on power, vitality and impressive mid-range torque – for rapid acceleration and faster overtaking.



Petrol, diesel or bioethanol? Your choice.

Whichever engine you choose for your Saab 9-5, you can expect intelligent power. What you get is a fuel-efficient engine that responds when necessary with the inspiring performance of a far larger engine. We call it rightsizing. In other words efficient use of energy with a surprisingly powerful result.



Four cylinder petrol engines.

The Saab 9-5 is an all-turbo experience. No surprise then that even the 2.0t petrol engine gives you the sort of torque you would expect from a 2.5-litre normally aspirated engine, but at lower revs. The two more powerful engines naturally provide still more punch, particularly once the revs rise.



Low-emission turbodiesel.

With our advanced turbodiesel you get high performance combined with low fuel consumption and low emissions. Thanks largely to the VNT turbo (Variable Nozzle Turbine) that provides faster response across the rev range by adjusting to the gas flow. The result? Try the 150 hp TiD engine and enjoy the 320 Nm of torque.



Saab BioPower.

Saab BioPower is a revolutionary innovation. Fill up with bioethanol (E85) fuel and you'll get even more power. At the same time, you'll help substantially reduce fossil CO₂ emissions compared with running on petrol. In fact, Saab BioPower engines emit just 35–50 g/km* fossil CO₂ when running on E85 bioethanol fuel. If E85 is not available you can simply fill up with petrol, or any mix of the two.

*Fossil CO₂ emissions are the CO₂ emissions emanating from the 15% petrol included in E85. The figure varies with the model and is based on calculations for Saab BioPower engines when running on E85.



Saab BioPower

Release the power of nature.

Saab BioPower is the first flex-fuel solution to produce significantly more power when running on bioethanol (E85). Giving you inspiring performance – with a cleaner conscience. Our advanced Turbo engine technologies take advantage of the higher octane rating of E85, making the engine more efficient. The result? Fuel your Saab 9-5 BioPower with E85 and you'll get up to 30 extra horsepower and an inspiring rise in torque. Count on faster response for quicker overtaking. And sportier performance that encourages you to always fuel up with E85. To add to the pleasure, Saab BioPower engines emit just 35–50 g/km* fossil CO₂ when running on E85 bioethanol fuel.

A Saab 9-5 BioPower is as easy to drive and own as a petrol or diesel car. The technology is affordable and well proven and it does not steal space or add significant weight to your car. All you have to do is choose the E85 pump at the filling station.

*Fossil CO₂ emissions are the CO₂ emissions emanating from the 15% petrol included in E85. The figure varies with the model and is based on calculations for Saab BioPower engines when running on E85.



Saab 9-5 2.3t BioPower – the most powerful alternative in our pioneering BioPower engine range. When running on E85, the power output rises from 185 to 210 hp. Torque is increased from 280 to 310 Nm. What's more, the Saab 9-5 BioPower runs on petrol, E85 or any mixture of the two for extra convenience.

Saab 9-5 engine range.

2.0t

150 hp/240 Nm

Sedan	Man./Auto.
Top speed, km/h	215/210
0–100 km/h, sec	9.8/11.6
80–120 km/h, sec*	15.8/–
L/100 km, city	12.1/14.9
L/100 km, highway	6.6/7.6
L/100 km, combined	8.6/10.3
CO ₂ , g/km, combined	204/244

SportCombi	Man./Auto.
Top speed, km/h	210/205
0–100 km/h, sec	10.2/12.5
80–120 km/h, sec*	17.3/–
L/100 km, city	12.5/15.1
L/100 km, highway	6.9/7.9
L/100 km, combined	9.0/10.6
CO ₂ , g/km, combined	214/251

2.3t

185 hp/280 Nm

Sedan	Man./Auto.
Top speed, km/h	230/225
0–100 km/h, sec	8.3/9.5
80–120 km/h, sec*	12.6/–
L/100 km, city	12.8/14.8
L/100 km, highway	6.6/7.2
L/100 km, combined	8.9/10.0
CO ₂ , g/km, combined	212/238

SportCombi	Man./Auto.
Top speed, km/h	225/220
0–100 km/h, sec	8.8/9.9
80–120 km/h, sec*	14.1/–
L/100 km, city	13.0/15.1
L/100 km, highway	6.8/7.6
L/100 km, combined	9.1/10.3
CO ₂ , g/km, combined	217/246

2.3 Aero

260 hp/350 Nm

Sedan	Man./Auto.
Top speed, km/h	250/250
0–100 km/h, sec	6.9/8.2
80–120 km/h, sec*	8.9/–
L/100 km, city	12.9/15.4
L/100 km, highway	6.6/7.1
L/100 km, combined	8.9/10.2
CO ₂ , g/km, combined	213/244

SportCombi	Man./Auto.
Top speed, km/h	245/245
0–100 km/h, sec	7.3/8.5
80–120 km/h, sec*	9.8/–
L/100 km, city	12.4/15.4
L/100 km, highway	6.8/7.1
L/100 km, combined	8.9/10.2
CO ₂ , g/km, combined	214/244

1.9 TiD

150 hp/320 Nm

Sedan	Man./Auto.
Top speed, km/h	205/205
0–100 km/h, sec	10.1/11.0
80–120 km/h, sec*	10.7/–
L/100 km, city	8.6/10.2
L/100 km, highway	5.2/5.7
L/100 km, combined	6.4/7.4
CO ₂ , g/km, combined	174/199

SportCombi	Man./Auto.
Top speed, km/h	205/200
0–100 km/h, sec	10.7/11.7
80–120 km/h, sec*	11.5/–
L/100 km, city	9.0/10.4
L/100 km, highway	5.6/5.9
L/100 km, combined	6.8/7.6
CO ₂ , g/km, combined	184/204

2.0t BioPower**

180 hp/280 Nm

Sedan	Man./Auto.
Top speed, km/h	225/220
0–100 km/h, sec	8.5/9.6
80–120 km/h, sec*	13.5/–
L/100 km, city	–/–
L/100 km, highway	–/–
L/100 km, combined	–/–
CO ₂ , g/km, combined	–/–

SportCombi	Man./Auto.
Top speed, km/h	220/215
0–100 km/h, sec	9.0/10.2
80–120 km/h, sec*	15.1/–
L/100 km, city	–/–
L/100 km, highway	–/–
L/100 km, combined	–/–
CO ₂ , g/km, combined	–/–

2.3t BioPower**

210 hp/310 Nm

Sedan	Man./Auto.
Top speed, km/h	235/230
0–100 km/h, sec	7.9/9.1
80–120 km/h, sec*	11.0/–
L/100 km, city	–/–
L/100 km, highway	–/–
L/100 km, combined	–/–
CO ₂ , g/km, combined	–/–

SportCombi	Man./Auto.
Top speed, km/h	230/225
0–100 km/h, sec	8.5/9.5
80–120 km/h, sec*	12.2/–
L/100 km, city	–/–
L/100 km, highway	–/–
L/100 km, combined	–/–
CO ₂ , g/km, combined	–/–

Fuel consumption and emission figures measured according to the 1999/100 EC directive.

* 5th gear, manual.

** Available on certain markets. Performance figures with E85 fuel. There are as yet no agreed EC directives governing the measurement of CO₂ emissions from bioethanol engines. We can therefore not show any detailed emissions figures for Saab BioPower engines.

Please visit www.saab.com for the latest information.

Engine and transmission.

Standard equipment

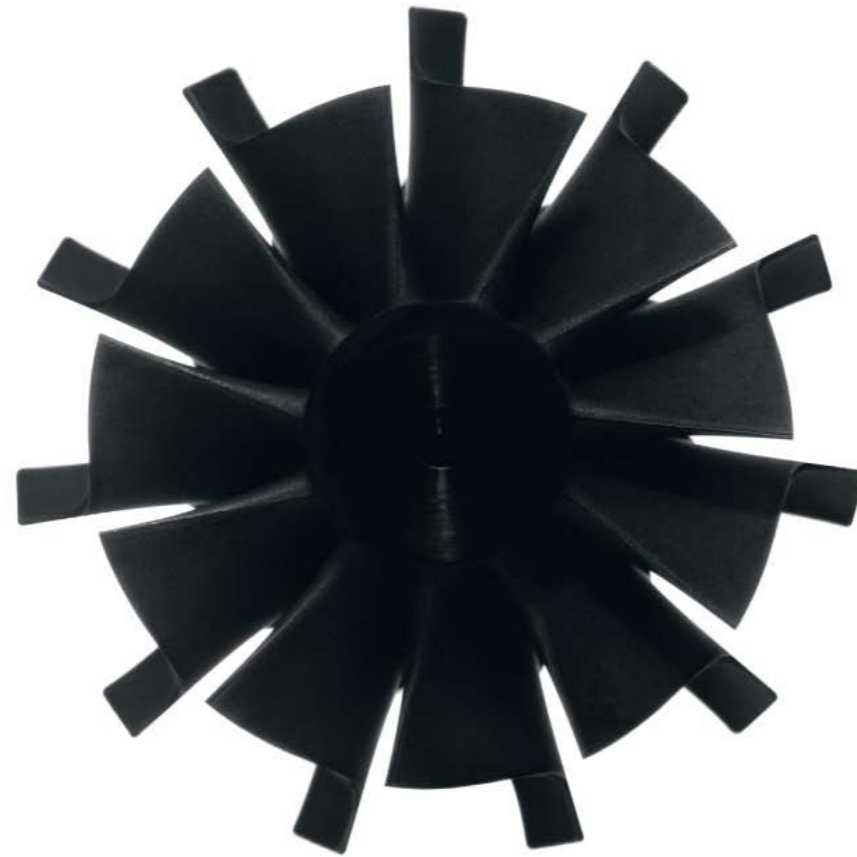
- Turbocharger
- Saab Trionic (not TiD)
- Intercooler
- Twin overhead camshafts
- 4 valves per cylinder
- Electronic engine management
- Coil-on-plug ignition (not TiD)
- Sequential multi-point fuel injection (not TiD)
- Common rail, second generation (TiD only)
- Multiple direct injection (TiD only)
- Particle filter (TiD only)
- Hidden exhaust pipe (visible on 2.3 Aero)
- Manual 5-speed gearbox

Engine range

- 2.0t (150 hp/110 kW/240 Nm)
- 2.3t (185 hp/136 kW/280Nm)
- 2.3 Aero (260 hp/191 kW/350 Nm)
- 1.9 TiD (150 hp/110 kW/320 Nm)
- 2.0t BioPower (180 hp/132 kW/280 Nm)
- 2.3t BioPower (210 hp/154 kW/310 Nm)

Optional equipment

- Sentronic 5-speed automatic transmission (petrol/BioPower engines only)
- 5-speed automatic transmission (TiD only)



Turbocharging – gives our engines high torque from low and medium revs. In the high-performance Aero version, the 260 hp engine offers a massive 350 Nm of torque from just 1900 r/min. With manual transmission you also get an overboost function that pumps out no less than 370 Nm for 20 seconds.

Advanced turbodiesel – 150 hp engine equipped with second-generation common-rail technology, multiple direct injection, twin overhead camshafts and VNT turbo (Variable Nozzle Turbine). It also features the most advanced diesel particle filter on the market – self-cleaning and maintenance-free.

Sentronic 5-speed – automatic transmission that allows manual gear-changes using paddles on the steering wheel. The current gear is indicated on the instrument panel. (Not TiD)



Saab Trionic – one of the world's most advanced management systems for 4-cylinder turbo petrol engines, developed by Saab. Analyses combustion through ionisation measurement.

Bioethanol (E85) – a renewable fuel produced from a variety of biomass sources such as forestry residue, sugar cane and sugar beet. When used in vehicles, it is mixed with 15 per cent petrol to improve cold-starting ability. Driving on E85 instead of regular petrol substantially reduces fossil carbon dioxide (CO₂) emissions.



BioPower engines – pioneering engines giving you more power when running on bioethanol (E85) instead of petrol. In the 2.0t BioPower, power output rises from 150 to 180 hp and torque is increased from 240 to 280 Nm. In the 2.3 BioPower, power output soars from 185 to 210 hp and torque is increased from 280 to 310 Nm. (Available on certain markets.)

BioPower technology – a Saab innovation based on advanced Saab turbo technology and our unique Saab Trionic engine management system that automatically adjusts for the type of fuel. Allows us to take advantage of the higher octane rating of E85 fuel, making the engine more efficient.

Aero

The image features a Saab 9-5 Aero car in motion, driving through a tunnel of water. The car is positioned in the center-right of the frame, moving from left to right. The water tunnel is formed by a large splash of water that curves around the car, creating a sense of speed and aerodynamic flow. The background is a light, neutral color, emphasizing the car and the water. On the left side of the image, the word 'Aero' is written in a large, bold, sans-serif font. The letters are white with a subtle shadow effect, making them stand out against the background.

Take a look at the Saab 9-5 Aero and you know right away what to expect. More of everything. More turbo power, sharper handling and more spirit. A high-performance experience inspired by our aeronautic past. The dynamic design and low stance really say it all. This car demands to be driven – actively. So get ready to tackle hills, corners and bends with a new intensity. Firmly seated in a unique body-hugging sports seat. It's a hard-to-match sensation. Every time.



Power and precision.

Sports chassis – tuned and lowered 10 mm. Designed to provide enhanced stability. Special dampers, stabilisers and high-performance springs mean more precise steering response, better body control, cornering and braking.



The unique driving sensation in a Saab 9-5 Aero is hard to explain, but crystal-clear behind the wheel. The sporty spirit, the power at hand and the inspiring response. Part of the secret lies in the alert, low-riding sports chassis – perfectly tuned to work in harmony with the potent power-plant under the bonnet. A 260 hp engine equipped with a high-output turbocharger offering a massive 350 Nm of torque from just 1800 to 5200 r/min. If you choose manual transmission, you also get an overboost function that pumps out no less than 370 Nm for 20 seconds. Just what that means for overtaking is something you have to experience to truly appreciate.

Aero in every detail.

Low stance, dynamic 17" wheels with performance tyres and sports exhaust. Clear indicators of the exhilarating on-road experience awaiting you in the Saab 9-5 Aero. Whether you choose the Sedan or SportCombi, you can count on the same agility and sporty handling. With the addition of extreme long-distance comfort in the unique Aero interior and driver's environment. Just buckle up, twist the ignition key and enjoy.



Looks and sound.

The Saab 9-5 Aero comes with 17" alloy wheels, performance tyres, integrated foglights and a visible sports exhaust providing a powerful sound.

Sports interior.

The Saab 9-5 Aero features body-hugging leather-faced sports seats with contrasting colours. A tinted metallic-effect fascia with a matching 3-spoke steering wheel underscores the performance theme.

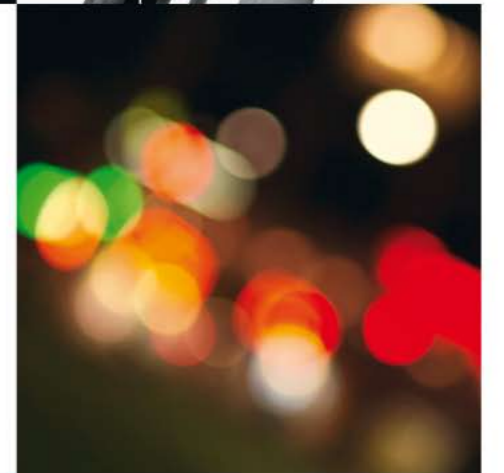
Performance brakes.

The large front and rear ventilated disc brakes and more powerful rear brake callipers are designed to ensure confident bite and superior fade resistance.



In Scandinavia dummies don't drive cars.

Saab cars are frequently ranked among the best in the world in various safety surveys. Yet our safety work is much more than award-winning. It focuses on what actually happens on the road in real-life conditions. After all, our job is to protect real people, not just dummies in a laboratory. This real-life philosophy has led to a range of safety innovations over the years. The most important result of all, however, is the impressive real-life safety level of our cars. Out on the road.



“Safest car in Sweden” – Saab 9-5. Ranked more than 30 per cent better than the average car in the Swedish Insurance Company Folksam report “How Safe is Your Car?” (2005).

Best in its class – Saab 9-5 Sedan. Ranked 42 per cent better than the average car in the US Highway Loss Data Institute (HLDI) study (2006).

Maximum rating: Good – Saab 9-5. For Saab Active Head Restraints (SAHR) in Britain’s Thatcham insurance research centre crash tests.

SAHR



The overall design of the Saab 9-5 integrates a chain of interacting safety systems. Like our award-winning active head restraints (SAHR) fitted in the front seats. A Saab innovation that reduces the risk of serious neck injuries by up to 75%* in rear-end collisions. The intelligent design is very simple. If the force of a rear-end collision is sufficiently high, the head restraint is activated by the seat occupant’s body weight. The head restraint then moves upward and forward to catch the head as it begins to move backwards.

* Published in The Journal of TRAUMA®, Volume 51, No 5, November 2001.



Five-star safety.

Standard equipment

- 3-point seatbelts, all seats
- Seatbelt pre-tensioners/load limiters, front
- Dual-stage airbags, front
- Head/thorax side airbags, front
- Side-impact protection structure
- Anti-submarining, front and rear seats
- Saab Active Head Restraints (SAHR), front
- Adjustable rear head restraints
- Active seatbelt reminder, front
- Break-away pedals
- Child security rear door locks
- Child seat anchorage points, rear
- Isofix child seat anchorage points, rear
- Load intrusion protection
- Load-securing eyelets (Sedan only)
- CargoTracks™, load-anchoring rails (SportCombi only)

Optional equipment

- Integrated child seat
- Child seats
- Baby insert for child seat
- Booster cushion
- Cargo net (SportCombi only)
- Cargo guard (SportCombi only)
- Load nets



Interacting safety systems – crumple zones, safety cage, airbags, seatbelts and the active head restraint (SAHR) are just some of the safety systems designed to help protect you and your passengers. They interact to absorb and distribute impact energy efficiently, thus offering a high level of real-life safety.

Dual-stage front airbags – designed to register the crash force and monitor whether the belt is being used. The system adjusts airbag deployment to suit, either to the maximum or with lower pressure.

Five stars – top rating in the European New Car Assessment Program (EuroNCAP) crash tests. For more information about the independent EuroNCAP safety institute, please visit www.euroncap.com.



Side airbags – high, two-part side airbags fitted in the front seat's backrest help protect both the head and thorax.

Child seats – available from Saab Genuine Accessories for all ages up to ten years. The optional integrated child seat for the rear seat is suitable for children between about three and ten.



CargoTracks™ – in the Saab 9-5 SportCombi allow you to secure different types of load. Together with the sturdy backrest, you can count on world-class load-shifting protection.

Broad front structure – designed to protect in frontal crashes from a variety of angles and objects. Crash boxes and front beams are designed to deform in a controlled manner to help absorb the impact energy.

Reinforced doors – featuring protective beams and overlapping sills help prevent door intrusion into the cabin.



Safety cage – in high-tensile steel. Designed to shield the occupants. Sandwiched between crumple zones front and rear that absorb and dissipate crash forces.

Robust B-pillar – designed to work as a pendulum and bend inwards at the bottom to lead crash forces away from the occupants.

Extending ski/board holder – slides out from the car roof for easy loading and unloading. Holds six pairs of skis or four snowboards. Lockable.



Ready? Always.

Sporty, spirited design. No wonder the Saab 9-5 is ready to support an active life. With innovative convenience that integrates smoothly with your daily needs. At work, with your family and friends or on the way to your next activity. If you opt for the versatile SportCombi version, you get even more space and utility. And with the right accessories you can add another dimension of flexibility that allows you to really get the most out of every day. Just go where you want and bring what you like – whatever the season.



For loads of fun.

A few moments with the Saab 9-5 SportCombi and you'll appreciate just how easy it is to bring along the gear you need. With our wide range of accessories you can customise the luggage compartment just the way you want. What you can't fit inside you can easily carry outside. The integrated roof rails make it easy to attach special holders for everything from kayaks to bikes and skis. And for even bigger items, just fit a towbar – fixed or removable.



Integrated roof rails – comes standard in black. Matt metal-finish is optional. (SportCombi only)

Roof rack, C-track – quick-release fasteners for easy fitting. Made of anodised aluminium. (SportCombi only)

Roof box – with low-profile aerodynamic design. Read more about roof boxes and other accessories in the Saab Genuine Accessories brochure.

Flexible space – 416 litres (VDA) of cargo space expand to 1490 litres when you fold the rear seat backrest in the SportCombi.

Easy loading – wide opening, hidden gas struts, recessed bumper and flat floor.

Cargo guard – metal guard that separates the passenger and luggage compartments. Gives the occupants added protection.

Cargo space divider – fitted together with the cargo guard. Convenient when travelling with pets.

Parcel shelf – rigid shelf that protects the luggage compartment from prying eyes. Easy to fold and remove.

Body-levelling – automatically keeps the car at optimal height. Provides added driving comfort and stability when carrying heavy loads or when towing. (SportCombi only)

CargoTracks™ – load-anchoring rails in the luggage compartment floor. The optional movable eyelets make it easy to secure loads using straps or nets.

Towbars – choose between a fixed and a removable/lockable towbar. Preferably combined with body-levelling.



Versatility and convenience.

Standard equipment

- Roof rails**
- Integrated cup holder in instrument panel
- Rear seat split/fold (60/40)
- Ski hatch*
- Parcel shelf**
- 12 V power outlets, on centre console and rear centre console
- CargoTracks™**
- Load securing eyelets*
- Storage pockets in front and rear doors
- Net pocket, passenger side of centre console

Optional equipment and accessories, examples

- Storage tray**
- 12 V power outlet, luggage area**
- Cargo nets
- Cargo guard and space divider**
- Cargo mats
- Storage box
- Roof rails, matt metal-finish**
- Roof racks
- Ski/board holders
- Ski/luggage boxes
- Bike holders for roof rack and towbar
- Kayak/canoe holders
- Towbars
- Cup holders
- Interior mats

* Sedan only. ** SportCombi only.

Read more about how you can customise your Saab 9-5 in the Saab Genuine Accessories brochure.

For more detailed information, please see the separate brochure: Saab 9-5 Equipment and Price. Available at your Saab dealer.



Kayak/canoe holder – with adjustable rubber supports that mould to the hull. Robust tensioning straps.

Bike holder with lift – the bike is inserted at door height, then lifted with the help of gas-filled struts and secured to the roof rack. Lockable. (SportCombi only)

Roof rack, C-track – quick-release fasteners for easy fitting. Made of anodised aluminium. (SportCombi only)

Ski hatch – in the rear seat to accommodate long items. (Sedan only)



Split/fold rear seat – dividable 60/40. Expands luggage capacity when you need more space.

Cargo mat – made of rubber. Protects the carpeting from dirt, water and wear.



Storage tray – keeps smaller items protected under the luggage compartment floor. (SportCombi only)

Scratch protection/seating mat – rolls out from the luggage compartment to protect the bumper. Easily removed for use as a waterproof seating mat.



Cargo nets – for the side and floor in the luggage compartment. Keeps light items in place. Floor cargo net for SportCombi only.



Bike holder, towbar-mounted – space for two bikes (three with an adapter). Fold-down function for easy access to the luggage compartment. Number plate holder and lighting.



Bag holder – mounted under the parcel shelf. Four hooks for holding shopping bags in place in the luggage compartment.



Remote central locking – control buttons integrated in the key.

Courtesy lights – with dome-lamp and theatre dimming.

Heat absorbing glass – in all windows. Reduces heat from solar radiation.

Rear air vents – for the ACC. Fresh air for rear seat passengers.

Cup holder – available in the rear seat. Unfolds to accommodate two cups. (Included in Comfort package.)

Heated rear seats – electrical heating of the rear seat cushion with temperature control. (Optional all seats.)

Dividable sun visors – allow you to have one sun visor in front of you and one alongside the window. (Optional)

Sunroof – made of glass with interior shade. Electrically operated. (Optional)

Powered front seats – with three different memory settings for driver's seat and door mirrors. (Optional)

Front armrest – covers a large storage compartment. Adjustable armrest is optional.

Cup holder – integrated in the instrument panel.

Cooled glove box – for soft drinks or anything you want to keep cool.

GPS, TMC, RDS, DVD, MP3.

It's simple. Just drive and enjoy.

The infotainment system for the Saab 9-5 has a range of advanced features you'll learn to appreciate in a minute. Just follow your instinct and point at the large colour touchscreen. The DVD-based navigation system will respond with clear directions and even suggest inspiring tips along the way. All while you enjoy your favourite music from the powerful sound system.





Home or away, the car knows the best route. Detours included.

The integrated navigation system in the Saab 9-5 is like a personal travel guide that can keep you updated with the latest traffic situation. Disruption ahead? Your guide automatically chooses a new route and updates your time of arrival. Whether it's just downtown or a trip around Europe. Italian food nearby? Your guide knows and gives detailed information about the restaurant and directs you to the entrance. As well as to another 1,000,000 points of interest. So, where to?

Want to discover new locations for your favourite activity? The navigation system even knows remote places you've probably never heard of. Waiting for you to explore.



Audio, navigation and communication.

Standard equipment

- Saab Infotainment with MP3/AUX connection
- Premium 70 Sound System
- Audio control buttons in the steering wheel
- Radio antenna, integrated in the rear window

Optional equipment

- Saab Infotainment with CD changer
- Saab Infotainment Plus with DVD navigation
- Premium 150 Sound System
- harman/kardon® Sound System
- CD changer, 6-disc, luggage compartment (standard with Saab Infotainment Plus)
- Handsfree preparation for mobile phone
- Telephone holder
- Bluetooth™ handsfree kit

Navigation – included in Saab Infotainment Plus. Utilises GPS, the DVD system and TMC. Voice guidance and clear directions in different perspectives on the large colour touchscreen. Address book for storing favourite destinations.



TMC – Traffic Message Channel. Reports traffic disruptions to the navigation system. Enables dynamic route guidance – a new route and time of arrival are automatically calculated.

DVD disc – with maps and facts covering most of Europe. Detailed information about 1,000,000 points of interest, including hotels, restaurants, recreation sites, filling stations and much more.

MP3/AUX connection – allows you to plug your MP3 player or other portable audio equipment into the car's audio system. (Saab Infotainment and Saab Infotainment CD Changer.)

Steering wheel controls – for convenient and safer operation of the infotainment system.

Saab Infotainment – includes AM/FM stereo tuner with RDS, MP3-compatible CD player and AUX connection for your MP3 player and other portable audio equipment. Can be combined with the 70 and 150 sound systems.

Saab Infotainment CD Changer – includes AM/FM stereo tuner with RDS, MP3-compatible 6-disc single-slot fascia mounted CD changer and AUX connection for your MP3 player and other portable audio equipment. Can be combined with the 150 and harman/kardon® sound systems.

Saab Infotainment Plus – includes AM/FM stereo tuner with RDS, MP3-compatible CD player, 6-disc CD changer in the luggage compartment, 6.5" colour touchscreen and navigation. Can be combined with the 150 and harman/kardon® sound systems.

Premium 70 Sound System – four loudspeakers and a total amplifier output of 70 W.

Premium 150 Sound System – seven loudspeakers and a total amplifier output of 150 W.



Six-disc CD changer – installed in the luggage compartment, standard with Saab Infotainment Plus.

Telephone holder – suitable for most makes of mobile phone.

Mobile phone preparation – with the optional handsfree function you can hear incoming calls via the audio system and adjust volume with the steering wheel controls. Includes external antenna for better reception.

Bluetooth™ handsfree kit – automatically connects your Bluetooth™-enabled phone with a handsfree function. Keep the phone in your pocket and operate it with voice commands and buttons on the control panel. The call is heard with high quality through the speakers of the audio system.

harman/kardon® Sound System – with eight loudspeakers including separate subwoofer (SportCombi) and nine loudspeakers including two subwoofers (Sedan) and a total amplifier output of 200 W.

For more detailed information, please see the separate brochure: Saab 9-5 Equipment and Price. Available at your Saab dealer.

Aero



Linear



Vector



Make your move.

Tailoring your personal Saab 9-5 is easy and inspiring. Choose between our two Saab Forms – Linear and Vector. Or for true high performance head straight for the Aero model. Once you've found your car, you can tailor it exactly as you like with options and accessories. Explore all the possibilities and design your own car at www.saab.com.

Linear

The very essence of the Saab design philosophy – timeless Scandinavian simplicity. Clean lines, modern and with a discreet edge.

Examples of equipment, Linear

15" steel wheels with wheel covers • Electronic Stability Program (ESP®)
Woven textile/Thila sports seats • Leather-trim steering wheel
Automatic Climate Control (ACC) • Electrically operated windows
Electrically operated/heated door mirrors



Sports seats woven textile/Thila, Black



Woven textile, Black (Optional)



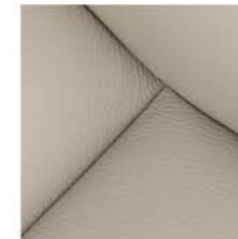
Leather sport, Parchment (Optional)



Leather sport, Black (Optional)



Premium natural leather sport, Black (Optional)



Premium natural leather sport, Parchment (Optional)



Dark walnut veneer facia/trim (Optional)

Linear interior with Black textile/Thila sport upholstery.
Leather upholstery refers to leather seating surfaces.



Vector

Exudes performance and dynamics for even more inspired driving. The new dark steel-effect facia accentuates the sporty spirit that pervades the entire car.

Examples of equipment, Vector

17" alloy wheels • Electronic Stability Program (ESP®)
Dark steel-effect facia • Leather/textile sports seats
Sports leather-trim steering wheel • Leather-trim gear lever
Automatic Climate Control (ACC)

Additional equipment, Nordic Edition

17" alloy wheels, 5-spoke Twin • Sports leather-trim steering wheel with metal-finish inserts • Leather sports seats • Metal-finish roof rails (SportCombi only) • Storage tray (SportCombi only)



Leather/textile
Thila sport, Black



Leather sport, Parchment
(Optional)



Leather sport,
Black (Optional)



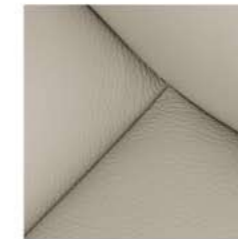
Leather sport ventilated, Black
(Optional)



Leather sport ventilated,
Parchment (Optional)



Premium natural leather
sport, Black (Optional)



Premium natural leather
sport, Parchment (Optional)



Dark walnut veneer facia / trim
(Optional)

Vector interior with Black leather/textile Thila sport upholstery.
Leather upholstery refers to leather seating surfaces.



Aero

Our top-of-the-line high-performance model with a unique sports interior and matching equipment level to offer the most intense Saab driving experience.

Examples of equipment

17" alloy wheels, 5-spoke High Split • Electronic Stability Program (ESP®)
Sports chassis • Performance brakes • Tinted metallic-effect facia
Leather Aero sports seats • Aero Sports leather-trim steering wheel (Optional)
Leather-trim gear lever • Integrated foglights



Leather Aero sport,
Black/Parchment



Leather Aero sport,
Parchment/Black



Leather/textile Thila sport,
Black (Optional)



Leather sport, Black
(Optional)



Leather sport, Parchment
(Optional)



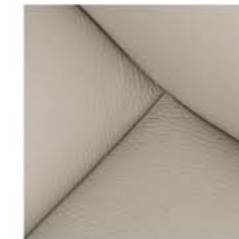
Leather sport ventilated, Black
(Optional)



Leather sport ventilated,
Parchment (Optional)



Premium natural leather
sport, Black (Optional)



Premium natural leather
sport, Parchment (Optional)



Dark walnut veneer facia/trim
(Optional)



Tinted metallic-effect centre
console trim (Optional)



Aero interior with Black/Parchment Leather Aero sport upholstery and optional Aero steering wheel.
Leather upholstery refers to leather seating surfaces.

The key to security.

Theft protection in the Saab 9-5 has been developed in close co-operation with leading insurance institutes. It's quite simply among the best on the market. The system counters both break-ins and theft of the car itself.

Coded key – remotely operates the central locking. Rolling digital codes make it virtually impossible to copy the code.

Door locks – protected against tampering. If anyone tries to force the door lock, it spins uselessly. Deadlocks (optional on certain markets) stop the doors being opened from inside after a break-in.

Locked wheels – the gear lever and transmission must be in reverse (or P for automatics) before you can take the key out of the ignition.

Immobiliser – the car's electronic units will only accept the code from the correct key.

Protected audio equipment – vital parts are digitally "married" to each other and to the car, so they only work in your particular car.

Saab Anti-theft Alarm – reacts if someone tries to enter the car or break a window. Also available with a tilt sensor that responds if someone raises the car to steal the wheels or tow away the vehicle itself. (Optional)

Foldable door mirrors – help protect the door mirrors from damage when the car is parked. (Optional)

Follow-me-home – headlamp illumination for 30 seconds when leaving the car.



Inspiring ownership.

Buying and owning a Saab 9-5 is as inspiring as driving it. Our wide range of facilities makes it easy, secure and economical for you to own and drive your car. Please ask your Saab dealer for more information, or visit www.saab.com.

Saab Finance – offers financing plans tailored to suit your individual requirements. For private and company customers.

Warranties – a new-car warranty and a six-year anti-corrosion warranty. Ask your Saab dealer for the exact conditions applicable on your market.

Saab 9-5 Equipment and Price – a separate brochure with detailed information about all the Saab 9-5 models and options. Available at your Saab dealer.

Saab Genuine Accessories – let you fine-tune the car to exactly suit your needs. Find out more in our accessories brochure, available at your Saab dealer.

Saab Insurance – simplifies contacts if your car is damaged. Your Saab dealer will take care of everything from inspection to damage assessment and repairs.

Saab Assistance – offers quick help round the clock in most of Europe. In the unlikely event of a breakdown or serious technical problem, we'll help you on site.

Saab Direct – provides free telephone information on matters relating to Saab. Offers you help if you have a problem while on the road.

Saab IDS – International & Diplomat Sales. Allows expatriates, military personnel abroad and members of the diplomatic corps to buy a Saab on favourable terms. More information on www.saab.com/ids.

Recycling – Saab cars are designed for recycling. For more information about recycling of End of Life Vehicles (ELVs) and take-back locations, go to www.saab.com.

Saab-i newsletter – sign up for the latest news, exciting offers and exclusive materials from Saab at www.saab.com.



3-spoke Double Blade 18x7 1/2"



5-spoke Double Wing 17x7 1/2"



5-spoke High Split 17x7 1/2" (ALU 74)



5-spoke Twin 17x7 1/2" (ALU 62)



7-spoke Twin 17x7"



6-spoke 17x7"



10-spoke 17x7" (ALU 39)



5-spoke EVO 17x7" (ALU 52)



6-spoke Split 17x7"



5-spoke 17x7"



10-spoke 16x6 1/2" (ALU 70)



9-spoke Double 16x6 1/2" (ALU 54)



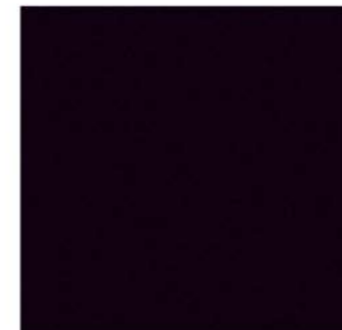
1 Polar White



2 Laser Red



3 Black



4 Jet Black metallic



5 Snow Silver metallic



6 Titan Grey metallic



7 Pepper Green metallic



8 Ice Blue metallic



9 Fusion Blue metallic

Due to limitations in the printing process, the colours shown may differ slightly from the actual paint colour.



www.saab.com

Int. Eng. Art. No. **32001701** Printed in Germany. Copyright Saab Automobile AB, Trollhättan Sweden, 2007. This brochure is printed on chlorine-free, recyclable paper. Particulars and illustrations in this brochure are based on the information that was valid at the time of final editing (June 2007). The model range, technical specifications, services and equipment may vary from one market to another and may be altered without prior notice. Pictures may show cars fitted with optional extra equipment.

Please consult your Saab dealer for the latest information.

Saab AB and Saab Automobile AB are today two unaffiliated companies with a common history. Saab Automobile AB manufactures cars and is a subsidiary of General Motors Corporation. Saab AB has its main operations in defence, aviation, space technology and civil security. For more information about Saab AB, please visit www.saabgroup.com.