

How about a little single-tasking? How about turning off the phones that play music, movies, and games all at once? How about drinking your coffee at the coffee shop? **When did we start doing everything simultaneously?** How about doing one thing at a time? Why don't we set the distractions aside and really enjoy one thing, like hugging tight corners on a firm **European-tuned suspension?**¹ Or giving all your attention to the road as you sit in a **premium sport seat**² and step on the gas of a **high-output ECOTEC™ engine?** How about **focusing on the thrill of driving again?** Simply driving and nothing more.

Rethink the task at hand.

Introducing the 2008 Saturn ASTRA® Sport Compact.





Who says
more doors
mean less
FUN?





Introducing the ASTRA 5-Door.



Where are all the backseat **THRILL SEEKERS?**

Who started this backseat-driving thing? When did the backseat become an extension of the driver's seat and cease to be the second row in an unforgettable thrill ride? When did the passengers stop looking outside and start looking over the driver's shoulder? Hey, passengers. Time to enjoy the ride again. Time to relax in the ASTRA's roomy backseat, hold on tight, and watch the world go by outside your large rear windows and available dual-panel power sunroof.

1. A little more atmosphere.

The available dual-panel power sunroof is the largest in its class,¹ letting in more fresh air and more light. Two things that we figured you would enjoy.

2. Multiple choice interior.

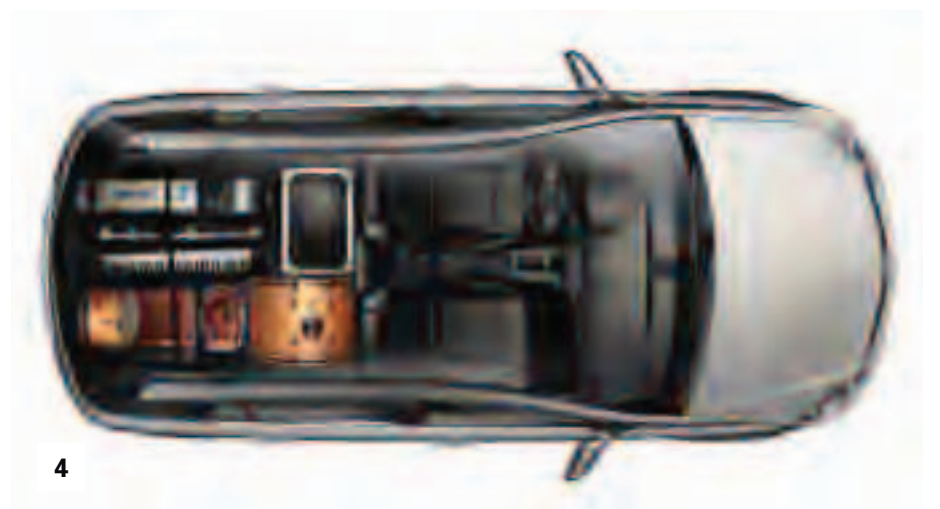
The 5-Door's interior has a removable cargo cover and 60/40-split folding rear seatbacks that fold flat to create 44.7 cubic feet² of cargo space. It easily accommodates a few friends, some gear for the weekend, or 44.7 cubic feet² of anything else you may need.

3. Easy access design.

The large, open door frames and windows in the rear were designed to give the backseat passengers a wider field of view and make getting in and out of the backseat effortless. Well, assuming that you will want to get out at some point.

4. Bring it along.

Cargo shorts may not always be in style. But one thing that will never go away is the fact that you are going to want to haul some stuff around from time to time, whether you decide to use your ASTRA 5-Door as a band van, surf wagon, or school bus. The large rear hatch and total interior volume of 104.6 cubic feet² make it easy to access all the things that you can't live without.



When did **safety** become a **LUXURY**?

Safety should be a priority, as it was when we designed the ASTRA with **six air bags** standard,¹ **four-wheel ABS** for enhanced stability when stopping, a Pedal Release System, a strong unibody structure utilizing high-strength steel, and available electronic stability control and **Traction Control** to keep you headed in your desired direction, which ultimately helps to protect you and your precious cargo.



Air bags.

That's right, air bags, plural, not air bag. The ASTRA comes with six standard air bags,¹ which include dual-stage front air bags that can instantly detect the severity of the collision and deploy at one of two levels. Head curtain side air bags are designed to instantly drop down to help protect front and outboard rear-seat occupants during lateral impact. And front seat-mounted, side-impact air bags provide thorax and pelvis protection to the driver and front passenger during certain side impacts.

¹ Air bag inflation can cause severe injury or death to anyone close to the bag when it deploys. Be sure every occupant is properly restrained. See inside back cover of this brochure for an important note about air bags and child safety. ² StabiliTrak comes standard on 3-Door models and is available on 5-Door models. ³ Call 1-888-4ONSTAR (1-888-466-7827), visit onstar.com, and see inside back cover for system limitations and details. ⁴ Success varies with conditions. ⁵ Turn-by-Turn Navigation requires Directions & Connections Plan. Not available in certain areas. Visit onstar.com for coverage maps.



StabiliTrak®

We figure that you know better than anyone what direction you want to go in. So the 2008 ASTRA is available with StabiliTrak-Stability Control.² It enhances control by using a sophisticated network of sensors to monitor steering angle, individual wheel speed, brake pressure, and lateral speed. Then it analyzes how the driver is steering and how the car is responding. It also works with the ABS and Traction Control to apply brakes or limit engine power to help keep you safe in those slippery situations.



ABS with Cornering Brake Control.

Coming to a screeching halt is not as good as a quiet halt. That's why ABS regulates individual wheel speed for enhanced stability and improved steerability in braking situations. ASTRA's brake system also features Cornering Brake Control to help reduce the chance of oversteering when braking through turns.



Stop!

We equipped the ASTRA's four-wheel disc braking system with large-diameter steel rotors for outstanding braking performance.

OnStar®

The most comprehensive in-vehicle security, communications, and diagnostics system.

ASTRA offers one year of OnStar,³ including the Safe & Sound Plan that includes automatic notification of air bag deployment, Stolen Vehicle Location Assistance,⁴ Remote Door Unlock,⁴ Crisis Assist, and a link to emergency services. Turn-by-Turn Navigation⁵ is also available and provides voice-guided directions to practically any destination. But don't worry, the Advisors can't hear you singing your favorite song, unless you want them to.

2008 Accessories



Sport pedals

Rear window shade

Glove box organizer

Side-window weather deflector

ASTRA Specifications/Features

| POWERTRAIN | 5-DOOR XE/XR | 3-DOOR XR |
|---------------------------|--|--|
| Engine | 1.8-liter, DOHC, 16-valve inline-4 ECOTEC™ VVT | 1.8-liter, DOHC, 16-valve inline-4 ECOTEC™ VVT |
| Horsepower (hp/kW @ rpm) | 138/103 @ 6,300 | 138/103 @ 6,300 |
| Torque (lb.-ft./Nm @ rpm) | 125/170 @ 3,800 | 125/170 @ 3,800 |
| Transmission | 5-speed manual or 4-speed automatic with neutral idle, winter mode, performance on demand, downhill grade assist | 5-speed manual or 4-speed automatic with neutral idle, winter mode, performance on demand, downhill grade assist |

CHASSIS

| | | |
|-------------------|--|--|
| Drivetrain | Front-engine/front-wheel drive | |
| Body construction | Body frame integral high-strength steel safety cage with front and rear crumple zones and side-impact protection | |
| Suspension | MacPherson strut front with stabilizer bar and torsion beam rear with integrated stabilizer | Sport-tuned, lowered MacPherson strut front with stabilizer bar and torsion beam rear with integrated stabilizer |
| Steering | XE: Electro-hydraulic power-assisted XR: Variable-effort, electro-hydraulic power-assisted | Quick-ratio, electro-hydraulic power-assisted |
| Brakes | 4-wheel disc brakes with ABS and Cornering Brake Control | |

WEIGHTS AND CAPACITIES

| | | |
|---|---------------------------------|---------------------------------|
| Curb weight (lbs.) manual/automatic transmission | XE: 2,778/2,836 XR: 2,754/2,813 | XR: 2,768/2,826 |
| Passenger volume (cu. ft.) | 92.4 | 89.0 |
| Cargo-area volume (cu. ft.) with rear seat up/down ¹ | 12.2/44.7 | 12.0/37.8 |
| Fuel/capacity (approx. gal.) | Regular unleaded (87 octane)/12 | Regular unleaded (87 octane)/12 |
| Seating capacity | 5 | 5 |

INTERIOR DIMENSIONS (FRONT/REAR IN.)

| | | |
|---------------|-----------|-----------|
| Headroom | 38.9/38.3 | 37.8/36.6 |
| Legroom | 42.0/35.3 | 42.3/35.0 |
| Hip room | 51.8/51.4 | 51.3/51.0 |
| Shoulder room | 53.9/52.8 | 53.9/52.7 |

FUEL ECONOMY ESTIMATES (CITY/HWY)²

| | 5-DOOR XE | 5-DOOR XR | 3-DOOR XR |
|------------------------|-----------|-----------|-----------|
| Automatic transmission | 24/30 | 24/30 | 24/30 |
| Manual transmission | 24/32 | 24/32 | 24/32 |

COMFORT AND CONVENIENCE

| | | | |
|--|----------------|----------------|----------------|
| Air conditioning | ○ | ● | ● |
| Cruise control | ● | ● | ● |
| Driver Information Center including audio, time and outside temperature display | ● | ● | ● |
| Floor mats | ● | ● | ● |
| Power door locks with central locking feature and Remote Keyless Entry | ● | ● | ● |
| Courtesy lighting and dual reading lamps in front and rear | ● | ● | ● |
| Premium Trim Package: leather seating surfaces, vinyl door trim, leather-wrapped steering wheel, driver manual lumbar seat adjuster, heated front seats, interior ambient LED lighting | – | ○ ³ | ○ |
| Cloth front bucket seats, reclining with adjustable active head restraints | ● | ● | – |
| Cloth front bucket high-sport seats with enhanced bolsters, driver lumbar and seat height adjuster | – | – | ● |
| Easy Entry front sliding seats | – | – | ● |
| Rear 60/40-split flat-folding seat with three adjustable and removable head restraints and retractable dual cupholders in seat cushion | ● | ● | ● |
| Driver 4-way and passenger 2-way manual seat adjuster | ● | ● | ● |
| Heated front seats | ○ ⁴ | ○ ⁵ | ○ ⁵ |
| Three-spoke steering wheel with rake and telescoping steering column | ● | ● | ● |
| Steering wheel-mounted audio and Driver Information Center controls | – | ● | ● |
| Sunglass storage, overhead | ● | ● | ● |
| Driver and front passenger illuminated vanity mirrors | ● | ● | ● |
| Power windows with Express-Down | ● | ● | ● |
| Front console with cupholder and 12-volt power outlet | ● | ● | ● |
| Dual-panel power sunroof with electric sunshade | ○ ⁶ | ○ | – |
| Power-adjustable, manual folding, heated side mirrors | ● | ● | ● |
| Body-colored bodyside moldings, door handles and outside mirrors | ● | ● | ● |
| Touchpad liftgate, cargo light and removable cargo cover | ● | ● | ● |
| Front intermittent windshield wipers with RainSense™ feature | ● | ● | ● |
| Rear wiper with washer | ● | ● | ● |
| 16-inch steel wheels with full wheel cover and P205/55R16 all-season touring tires | ● | – | – |
| 16-inch alloy twin-spoke wheels and P205/55R16 all-season touring tires | ○ | ● | – |
| 17-inch alloy ten-spoke wheels and P225/45R17 all-season performance tires | – | – | ● |
| Sport Handling Package: StabiliTrak®-Stability Control, lowered sport suspension, quick-ratio power steering, 17-inch five-spoke alloy wheels, and P225/45R17 all-season performance tires | – | ○ | – |
| 18-inch alloy star-spoke wheels and P215/45R18 summer-only performance tires ⁷ | – | – | ○ |

SAFETY AND SECURITY

| | | | |
|---|---|---|---|
| Dual-stage driver and front passenger air bags with Passenger Sensing System ⁸ | ● | ● | ● |
| Thorax and pelvis side-impact air bags for driver and front passenger ⁸ | ● | ● | ● |
| Front and rear outboard head curtain side air bags ⁸ | ● | ● | ● |
| Height-adjustable front safety belts with pretensioners | ● | ● | ● |
| Lower Anchorages and top Tethers for CHildren (LATCH) in all three rear seating positions | ● | ● | ● |
| Active front seat head restraints | ● | ● | ● |
| StabiliTrak-Stability Control and Traction Control | ○ | ○ | ● |
| Halogen headlamps with automatic exterior lamp control and daytime running lamps | ● | ● | ● |
| Front projector-beam foglamps | – | ● | ● |
| Turn signal indicator with lane-change signaling feature | ● | ● | ● |
| Pedal Release System | ● | ● | ● |
| Tire Pressure Monitor System | ● | ● | ● |
| Theft-deterrent system | ● | ● | ● |
| Child security locks | ● | ● | ● |
| OnStar [®] with one-year Safe & Sound Plan ⁹ | ● | ● | ● |

ENTERTAINMENT SYSTEMS

| | | | |
|---|---|---|---|
| AM/FM stereo with CD player and 6 speakers | ● | – | – |
| AM/FM stereo with CD player, MP3 playback and 7 speakers | – | ● | ● |
| Advanced Audio Package: AM/FM stereo with 6-disc CD changer and MP3 playback, 7-band equalizer, enhanced information display and 7-speaker premium audio system | – | ○ | ○ |

● = standard ○ = available – = not available

1 Cargo and load capacity limited by weight and distribution. **2** Based on GM testing. Official EPA estimates not available at time of printing. **3** Not available at start of production. **4** Available with cloth seats. **5** Available with cloth seats or as part of Premium Trim Package. **6** Requires air conditioning. **7** Summer-only tires tend to wear faster and are more susceptible to damage from road hazards or curb impact than standard profile tires. This type of damage is not covered by the GM New Vehicle Limited Warranty. You may want to get different tires if you expect to drive in winter conditions. See your retailer for proper tire selection. **8** See panel on the left for important information about air bags, including a note about child safety. **9** Call 1-888-4ONSTAR (1-888-466-7827), visit onstar.com or see panel on the left for system limitations and details.

- Front molded splash guards
- Premium all-weather floor mats
- Side-window weather deflectors (front & rear)

- Cargo liner
- Rear cargo convenience nets

- Rear window shade
- Glove box organizer

- Sport pedals
- Smoker's Package

- Wheel locks
- First-aid kit

Fully Backed By Saturn. Saturn Accessories permanently installed at the time of new-vehicle delivery are covered under the New Vehicle Limited Warranty. If installed after delivery, coverage (parts and labor) is for the balance of the New Vehicle Limited Warranty or a minimum of 12 months/12,000 miles (whichever comes first). Saturn Accessories not requiring installation or purchased over the counter carry a 12-month warranty (parts only). Does not apply to licensed products.

IMPORTANT WORDS ABOUT THIS CATALOG

We have tried to make this catalog comprehensive and factual. We reserve the right, however, to make changes at any time, without notice, in prices, colors, materials, equipment, specifications, models and availability. Specifications, dimensions, measurements, ratings and other numbers in this catalog and other printed materials provided at the retailer or affixed to vehicles are approximates based upon design and engineering drawings and prototypes and laboratory tests. Your vehicle may differ due to variations in manufacturer and equipment. Because some information may have been updated since the time of printing, please check with your Saturn retailer for complete details. Saturn reserves the right to lengthen or shorten the model year for any product for any reason, or to start and end model years at different times.

A NOTE ABOUT AIR BAGS AND CHILD SAFETY

Always use safety belts and the correct child restraint for your child's age and size. Even in vehicles equipped with air bags and the Passenger Sensing System, children are safer when properly secured in a rear seat in an appropriate infant, child or booster seat. Never place a rear-facing infant restraint in the front seat of any vehicle equipped with an active frontal air bag. Air bag inflation can cause severe injury or death to anyone too close to the bag when it deploys. Be sure every occupant is properly restrained. See your vehicle owner's manual and child-safety seat instructions for more information.

ONSTAR[®] INFORMATION

OnStar services require vehicle electrical system (including battery), wireless service and GPS satellite signals to be available and operating for features to function properly. OnStar acts as a link to existing emergency service providers. Subscription Service Agreement required. Call 1-888-4ONSTAR (1-888-466-7827) or visit onstar.com for OnStar's Terms and Conditions, Privacy Policy, and system limitations and details.

SATURN'S VEHICLE EXCHANGE PROGRAM

Within the first 30 days or 1,500 miles of delivery, whichever comes first, the original purchaser may exchange his or her Saturn vehicle if not completely satisfied. In the event that an owner returns his or her vehicle, he or she will exchange it for another 2008 Saturn vehicle. See retailer for limitations and restrictions. All the same factory-supported initiatives will be included on the exchange vehicle that were on the original vehicle. The vehicle must be returned in the condition in which it was delivered, without damage or excessive wear and tear. If non-warranty repairs equal to or greater than \$300 have been performed or are necessary, the vehicle is not eligible to be returned; if less than \$300, the damage must be repaired or the estimate deducted from the credit toward the exchange vehicle.

NEW VEHICLE LIMITED WARRANTY

This warranty is for Saturn vehicles registered in the United States. See your Saturn retailer for terms and conditions. Covered for 3 years/36,000 miles (whichever comes first): the complete vehicle, tires, towing to your nearest Saturn retailer, cosmetic corrosion resulting from defects, repairs made to correct any vehicle defect, with no charge for most warranty repairs. Covered for 6 years/100,000 miles (whichever comes first): rust-through corrosion. Covered for 8 years/100,000 miles (whichever comes first): certain hybrid components. See retailer for details.

CORROSION PROTECTION

Saturn vehicles are designed and built to resist corrosion. All body and sheet metal components are warranted against rust-through corrosion for 6 years or 100,000 miles, whichever comes first. Application of additional rust-inhibiting materials is not required under the corrosion coverage and none is recommended. See your Saturn retailer for terms of this limited warranty.

AN IMPORTANT NOTE ABOUT ALTERATIONS AND WARRANTIES

Installations or alterations to the original equipment vehicle (or chassis) as distributed by GM are not covered by the Saturn New Vehicle Limited Warranty. The special body company, assembler, equipment installer or upfitter is solely responsible for warranties on the body or equipment and any alterations (or any effect of the alterations) to any of the parts, components, systems or assemblies installed by GM. GM is not responsible for the safety or quality of design features, materials or workmanship of any alterations by such suppliers.

ASSEMBLY

Saturn vehicles and their components are assembled or produced by different operating units of GM, its subsidiaries or suppliers to GM worldwide. We sometimes find it necessary to produce Saturn vehicles with different or differently sourced components than originally scheduled. Because some options may be unavailable when your vehicle is assembled, we suggest you verify that your vehicle includes the equipment you ordered, or if there are changes, that they are acceptable to you.

ENGINES

Saturn products are equipped with engines produced by GM Powertrain or other suppliers to GM worldwide. The engines in Saturn products may also be used in other GM makes and models.

FUEL ECONOMY

Commencing with 2008 model-year vehicles, EPA revised its methods for estimating vehicle fuel economy. The new test methods will likely lower mpg estimates as compared to 2007 and previous model-year vehicles. These new methods are intended to better represent current driving styles, varying road and weather conditions, and certain other external factors.

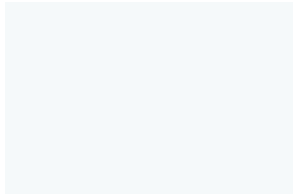
UPDATED SERVICE INFORMATION

Saturn retailers receive useful service bulletins about Saturn products. See your retailer for more information.

GM MOBILITY

GM Mobility assists people with unique transportation needs by offering a variety of resources, including aftermarket adaptive equipment. Speak to a knowledgeable Assistance Center representative at 1-800-323-9935 (TTY users: 1-800-833-9935) or visit gmmobility.com for more information.

Exterior Paint



Arctic White



Star Silver



Twilight Blue



Silver Sand

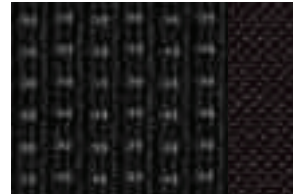


Black Sapphire

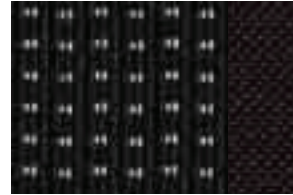


Salsa Red

Interior Fabrics



XE Charcoal



XR Charcoal

Interior Leather



XR Charcoal

Color Combinations

| EXTERIOR PAINT | CLOTH: XE | CLOTH: XR | AVAILABLE LEATHER: XR |
|----------------|-----------|-----------|-----------------------|
| Arctic White | Charcoal | Charcoal | Charcoal |
| Star Silver | Charcoal | Charcoal | Charcoal |
| Twilight Blue | Charcoal | Charcoal | Charcoal |
| Silver Sand | Charcoal | Charcoal | Charcoal |
| Black Sapphire | Charcoal | Charcoal | Charcoal |
| Salsa Red | Charcoal | Charcoal | Charcoal |

Dimensions: 5-Door XE/XR



Wheels



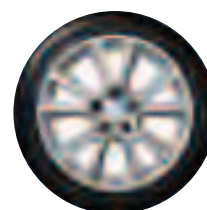
16" STEEL WITH FULL COVER
(5-Door XE)



16" ALLOY
(Optional on 5-Door XE; 5-Door XR)



17" ALLOY
(Optional on 5-Door XR)



17" ALLOY
(3-Door XR)



18" ALLOY
(Optional on 3-Door XR)

Dimensions: 3-Door XR

