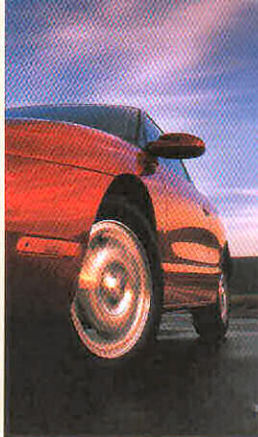


What makes Saturn cars so darned popular?



Maybe it's the people who **build** them.



*Not everyone just picks up
and moves to a small town in
Tennessee to work for a new
car company. Then again,
not everyone gets to manage
themselves, make group deci-
sions and believe in the product
they build, either. Perhaps one
UAW team member said it
best: "Fun to drive? Heck,
they're fun to build."*



Set aside their "no haggle, no hassle" approach to selling and what have you got? Retailers who — with very little coaching from us — have been doing some pretty neat things for our owners, as well as for our local communities. From hosting barbecues to building urban playgrounds, it's safe to say that they care about more than just the car you drive.



Maybe it's the people who **sell** them.





Maybe it's the people who **drive** them.



*They're not your average,
run-of-the-mill bunch. Saturn
owners attend car care work-
shops (even in 15 degree weather),
bake birthday cakes for their cars
and write sonnets to their sales
consultants. They even initiated
the national Saturn CarClub so
they could swap stories, travel tips
and other neighborly information
with like-minded enthusiasts.*

SL2

Four doors and six years ago, the first SL2 was driven off the line. And, though we've made some improvements to our upper-level sedan, two important things have stayed the same: a powerful sport-tuned engine and a big, roomy feeling inside—plenty of space to bring clients, kids or groceries along.



Maybe it's the **Cars.**

*Dedicated union workers,
friendly sales consultants and
cheerful owners are all well and
good. But with 82 patents
under our belt, we've got a lot
more to offer than smiling faces.*

*We've got cars that people
seem pretty excited about.
Though you should be the judge.
Consider this an invitation.
See for yourself what makes
a Saturn, well, a Saturn.*



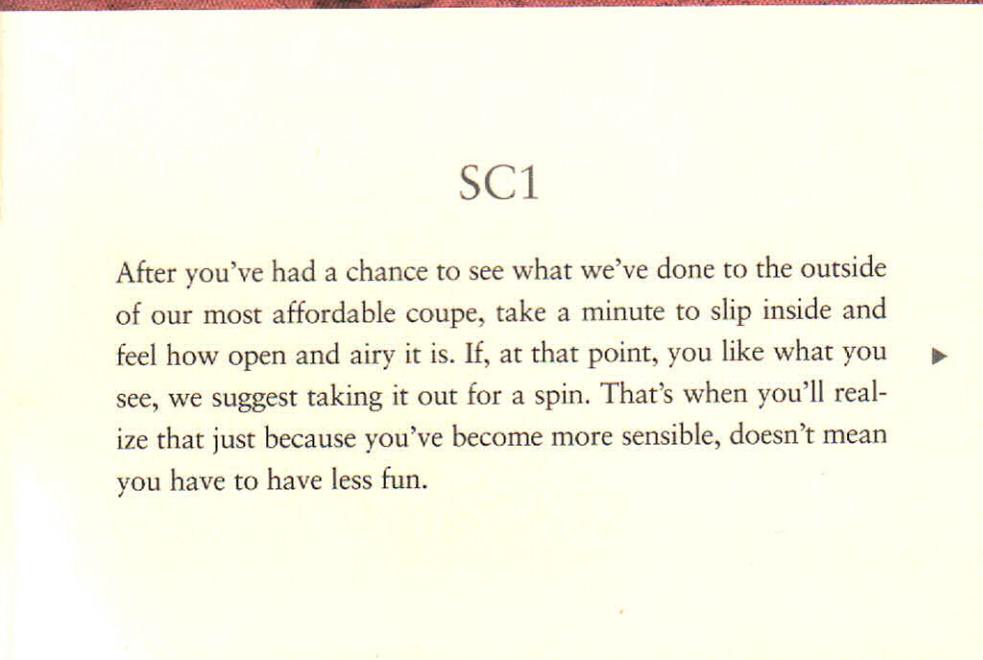
SL1

There are a few things we all want out of life. A good value and a good time are often at the top of the list. So we figured, hey, why not create a car to satisfy both of those wants? That brings us to our mid-level sedan—the SL1. After all, just because it looks and feels like it should cost more doesn't mean it has to.



SC2

The newly designed SC2 is our top-of-the-line sport coupe. It's the car every engineer wants to sneak onto the test track and drive the living daylights out of. Aerodynamic styling makes it sleek. All new headlight design makes it look like one of those fancy foreign jobs. And, oh, how it hugs the road.



SC1

After you've had a chance to see what we've done to the outside of our most affordable coupe, take a minute to slip inside and feel how open and airy it is. If, at that point, you like what you see, we suggest taking it out for a spin. That's when you'll realize that just because you've become more sensible, doesn't mean you have to have less fun.



SW1 & SW2

Our engineers designed two wagons to accommodate varying lifestyles. Either way, if you pop open the liftgate and fold down the rear seats, you'll have plenty of room to fit a 20-inch TV, or Fido in full canine sprawl. Both versions boast well-tuned suspension to easily manage pesky interruptions like potholes, dips and speed bumps.



Maybe it's all the **COOL** colors.

STANDARD EQUIPMENT

5-speed manual transmission • Power-assisted ventilated front disc/rear drum brakes • Driver and front passenger airbags (supplemental inflatable restraints) • Daytime Running Lights (DRL) • Dynamic side impact protection • Dent/corrosion-resistant polymer bodyside panels • Tinted glass • Halogen headlights • Adjustable steering column • Remote hood, fuel-filler door and trunklid/liftgate door releases • Rear window defogger with manual shutoff and timed reset • Warning chimes for headlights-on, key-in-ignition, and driver's seatbelt • Full-length front console with two cupholders, storage, and movable ashtray • Coat hooks and passenger assist grips • Cargo area light • 3-way dome light (delayed shut-off feature with power door locks) • Passenger-side visor vanity mirror • Reclining front bucket seats • 60/40 split fold-down rear seatbacks • AM/FM stereo with seek, digital clock, and four 6-inch speakers[†] • Fuel System - Sequential-port fuel-injection • Battery - 12-volt, 525 cold cranking amps • Fuel Tank - 12.2 gallons (46.2 liters)

SELECT FEATURES

	SEDANS			COUPES		WAGONS	
	SL	SL1	SL2	SC1	SC2	SW1	SW2
Manual rack-and-pinion steering	S	N	N	N	N	N	N
Power rack-and-pinion steering (vehicle-speed sensitive, variable-effort feature on SL2, SC2, and SW2)	N	S	S	S	S	S	S
Sport-tuned suspension system with front and rear stabilizer bar	N	N	S	N	S	N	S
Child-security rear door locks	S	S	S	N	N	S	S
Driver-side black mirror (manual)	S	S	S	S	N	S	S
Passenger-side black mirror (manual)	OA	S	S	S	N	S	S
Dual color-keyed mirrors (manual)	N	N	N	N	S	N	N
Rear wiper/washer system	N	N	N	N	N	S	S

OPTIONAL EQUIPMENT

Air conditioning with "CFC-free" refrigerant	O	O I	O I	O I	O I	O I	O I
Alloy wheels—"Double Fin" style, 15-inch —"Teardrop III" style, 15-inch	N	N	O I	O [‡]	N	N	O
Cruise control	A [‡]	O A I	O A I	O A I	O A I	O A I	O A I
Foglights	N	N	O	N	S	N	O
Leather Appointments (only available with Factory Option Package)	N	N	O	N	O	N	O
Leather-wrapped steering wheel	A	A	A I	A	S	A	A I
Power sunroof with tilt-up feature, inner sliding shade, and dual map lights	N	O	O	O	O	N	N
Rear spoiler	N	N	O	O	S	N	N
Electronically controlled 4-speed automatic transmission	N	O	O	O	O	O	O
Anti-lock Braking System (ABS) and Traction Control	O	O	O	O	O	O	O
Saturn Security System with power locks and remote keyless entry (factory installed)	N	O I	O I	I	I	O I	O I



Black Gold



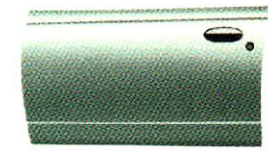
Copper



Dark Green



Gold



Light Green



Medium Red



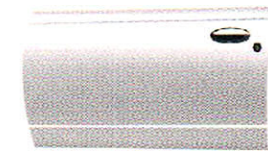
Purple



Red



Silver



White



SL, SC1, SW1



SL1



SC2



SL2, SW2*



SL2, SC2, SW2

SC2

SL2, SC2, SW2

*SW2 available with grey or tan only.

OPTIONAL EQUIPMENT

	SEDANS			COUPES		WAGONS	
	SL	SL1	SL2	SC1	SC2	SW1	SW2
AM/FM stereo with cassette, seek, digital clock, and four 6-inch speakers	OA	OA	OA	OA	OA	OA	OA
AM/FM stereo with cassette, graphic equalizer, theft-deterrent feature, digital clock, and four 6-inch speakers [‡]	OA	OA	OA	OA	OA	OA	OA
AM/FM stereo with CD player, graphic equalizer, theft-deterrent feature, digital clock, and four 6-inch speakers	OA	OA	OA	OA	OA	OA	OA

ENGINE SPECIFICATIONS

Availability	SL/SL1/SC1/SW1	SL2/SC2/SW2
Engine Type	1.9-liter, SOHC, 8-valve inline 4-cylinder	1.9-liter, DOHC, 16-valve inline 4-cylinder
Horsepower (SAE Net)	100 hp @ 5000 rpm	124 hp @ 5600 rpm
Torque	114 ft. lbs. @ 2400 rpm	122 ft. lbs. @ 4800 rpm; 114 ft. lbs. @ 2400 rpm

BASE CURB WEIGHT WITH OPTIONAL AIR CONDITIONING

	Manual Transmission	Optional Automatic Transmission
SL/SL1	2321.2 lbs. (1052.9 kg)	2350.1 lbs. (1066.0 kg)
SL2	2390.2 lbs. (1084.2 kg)	2419.3 lbs. (1097.4 kg)
SC1	2309.1 lbs. (1047.4 kg)	2338.2 lbs. (1060.6 kg)
SC2	2385.6 lbs. (1082.1 kg)	2414.7 lbs. (1095.3 kg)
SW1	2390.9 lbs. (1084.5 kg)	2420.2 lbs. (1097.8 kg)
SW2	2454.4 lbs. (1113.4 kg)	2483.7 lbs. (1126.6 kg)

EPA ESTIMATED MILEAGE (CITY MPG/HIGHWAY MPG)

Estimated Miles Per Gallon (MPG)	SL	SL1	SC1	SW1	SL2/SC2/SW2
Manual Transmission	28/40	28/40	28/40	28/37	27/37
Automatic Transmission	N/A	27/37	27/37	27/34	24/34

EXTERIOR DIMENSIONS

	SL/SL1/SL2	SC1/SC2	SW1/SW2
Wheelbase	102.4 in. (260.1 cm)	102.4 in. (260.1 cm)	102.4 in. (260.1 cm)
Overall Length	176.9 in. (449.3 cm)	180.0 in. (457.4 cm)	176.9 in. (449.3 cm)
Overall Height	53.8 in. (136.6 cm)	52.2 in. (132.6 cm)	54.5 in. (138.5 cm)
Overall Width	66.7 in. (169.4 cm)	67.3 in. (170.9 cm)	66.7 in. (169.4 cm)

KEY

S Standard Equipment **O** Option (Factory Installed) **N** Not Available
A Accessory (Retailer Installed) **I** Included in Factory Option Package

[†] Coaxial front/extended range rear on factory installations. [‡] SL includes 2 front speakers only.
[‡] Retailer installation requires vehicle to be equipped with one of the following options: air conditioning, automatic transmission, anti-lock braking system, power windows, or sunroof.
^{*} SC1 with optional "Double Fin" alloy wheels includes 185/65R15 86T touring tires.

A WORD ABOUT THIS BROCHURE

We have tried to make this catalog as comprehensive and factual as possible. We reserve the right, however, to make changes at any time, without notice, in colors, materials, equipment, specifications, models, and availability. Since some information may have been updated since the time of printing, please check with your Saturn retailer for complete details.



For more information, please contact your local Saturn retailer or call 1-800-522-5000. Look for us on the Internet at <http://www.saturncars.com>

©1996 Saturn Corporation. SATAUTO97