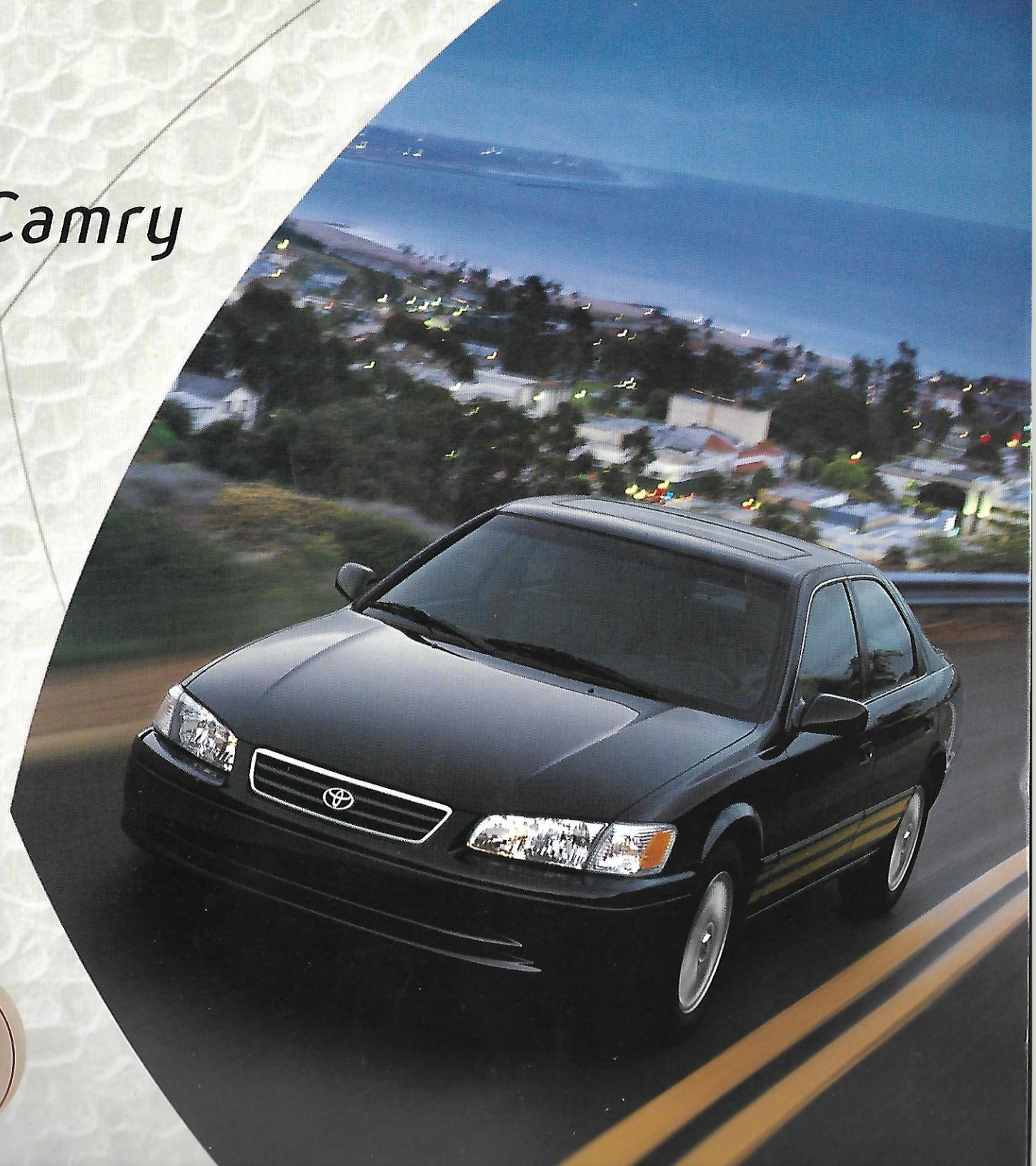


2001 Camry







Camry XLE *The ultimate Camry. XLE offers 16" aluminum alloy wheels, chrome trim and heated power outside mirrors. Inside, wood-grain-style interior trim, power front passenger seats, automatic climate control and an 8-speaker JBL Premium AM/FM ETR/Cassette/CD make this the most luxurious Camry of all.*



Camry Gallery Series *The new Gallery Series features a rich, dual-tone exterior, unique wheels and chrome-tipped exhaust. Inside, this new special-edition Camry is further distinguished by premium dual-tone fabric upholstery; leather-wrapped steering wheel, shift knob and parking lever; carbon fiber and chrome trim details; and special Gallery Series insignia floor mats.*



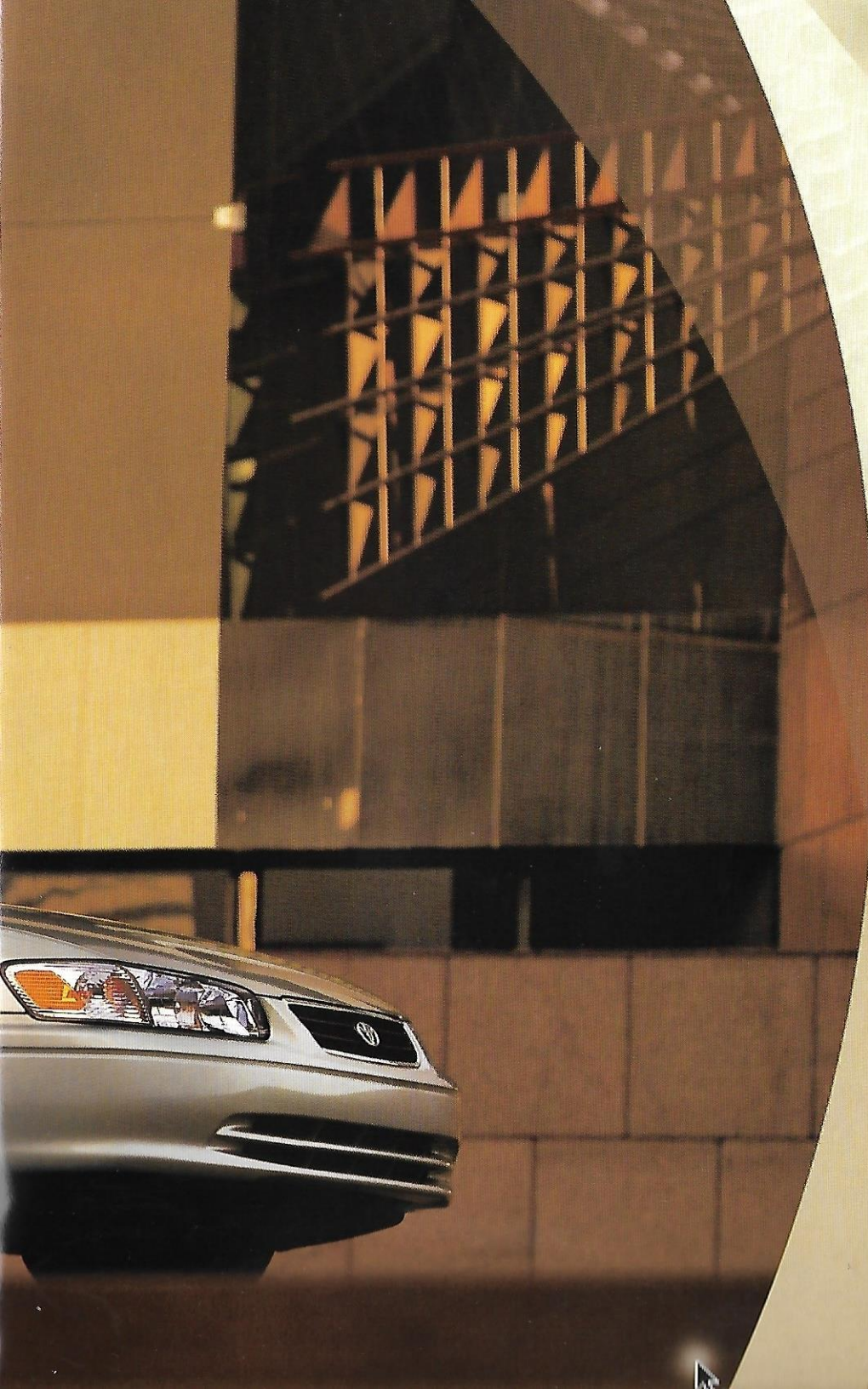
Camry LE *The most popular Camry model. LE standard features include dual power color-keyed remote-controlled mirrors, power windows and door locks, cruise control, CFC-free air conditioning and a 6-speaker Deluxe 3-in-1 AM/FM ETR/Cassette/CD.*



Camry CE *The most affordable Camry model. CE standard features include dual remote-controlled outside mirrors, 15" steel wheels with full wheel covers, 60/40 split/fold-down rear seat with fold-down center armrest, tilt steering wheel and 4-speaker Deluxe 3-in-1 AM/FM ETR/Cassette/CD.*

For a complete list of standard features, please see page 18.
For Extra Value and Option Packages, see page 20.





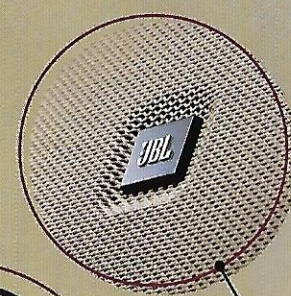
*It's easy to see why so many American car buyers put Camry right at the top of their lists, and why more owners come back to buy another Camry than any other car.**

*Over 18 years of continuous refinement have resulted in a sedan whose style, comfort, quality and reliability continue to set it apart from other cars in its class, and have earned it such accolades as "Best Premium Midsize Car in Initial Quality in a Tie."** Sleek, stylish and impeccably appointed, Camry's beauty and comforts reach their highest levels in the XLE shown here. Tastefully accented with bright chrome moldings and unique alloy wheels, this is the ultimate 2001 Camry.*

*Customer loyalty based on the number of owners who replaced a new vehicle with a new vehicle of the same model, based on a sampling of personal-use new-vehicle purchases and leases from 10/98 - 9/99.

**The Toyota Camry was tied as the highest ranked Premium Midsize Car in the J.D. Power and Associates 2000 Initial Quality Study™ Study based on a total 47909 consumer responses indicating owner-reported problems during the first 90 days of ownership. www.jdpower.com





JBL Premium 3-in-1 Audio System



Automatic Climate Control System
with Soft-Touch Controls

It feels as good as it looks.

Inside, the luxurious XLE lives up to its promise with an interior that makes you feel positively pampered. Warm wood-grain-style accents and a leather-wrapped steering wheel and shift knob add an extra touch of elegance—as does the available leather-trimmed upholstery. As for amenities...the list speaks for itself. Power-operated windows, door locks and heated outside mirrors; cruise control; a JBL premium 3-in-1 audio system; and power front seats (including a multi-adjustable driver's seat) are among the many pleasures that await you in Camry XLE.





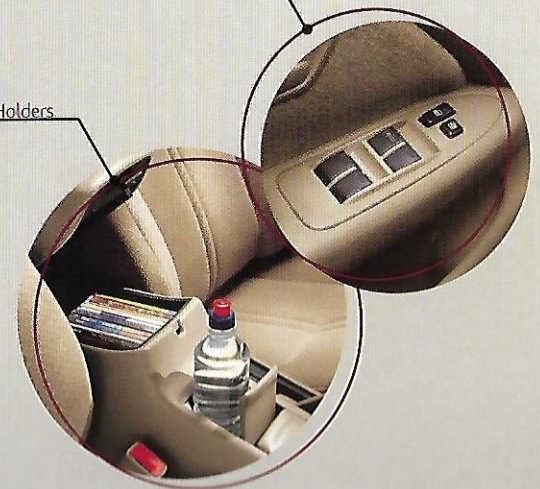


Camry LE extends a warm welcome.

Step inside Camry LE and you're immediately put at ease by its carefully crafted interior and impressive level of comfort. With one touch you can operate the power controls for the windows, door locks and outside mirrors. Cruise control is standard, of course, as is the CFC-free air conditioning. Comfortable, quiet, with ample room for up to five adults, the LE makes everyone feel right at home.

Power Window Controls

Covered Console with Integrated Cup Holders



Special Gallery Series Embroidered Floor Mats



Leather-Wrapped Steering Wheel



Premium Two-Tone Fabric Upholstery

Something special about Camry.

Camry takes on a stylish new expression in the Gallery Series. This special-edition Camry features a choice of three two-tone exteriors with chrome wheel covers and a chrome-tipped exhaust for added flair. Five-spoke 15" aluminum alloy wheels are available. And inside, a leather-wrapped steering wheel, shift knob and parking lever are among the extra touches that give this Camry its contemporary look and feel.





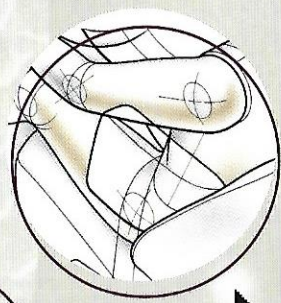
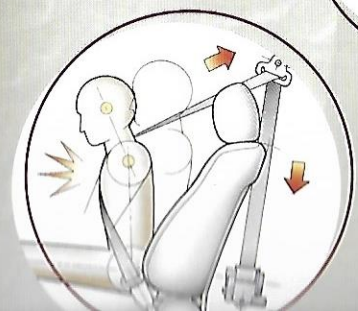


- Driver and front passenger air bag Supplemental Restraint System (SRS)*
- Driver and front passenger seat-mounted side-impact air bag Supplemental Restraint System (SRS)*—available
- 3-point front seatbelts with adjustable shoulder anchors, driver's Emergency Locking Retractor (ELR) and front passenger Automatic/Emergency Locking Retractor (ALR/ELR)
- Front seatbelt pretensioners with force limiters
- 3-point rear seatbelts for outboard and center passengers with Automatic/Emergency Locking Retractors (ALR/ELR)
- Energy-absorbing collapsible steering column
- Crumple zones and side-impact door beams
- Anti-lock Brake System (ABS)—standard on LEV6 and all XLE models, available on CE and LE 4-cylinder models, and includes Daytime Running Lights (DRL)
- Traction Control (TRAC)**
- Child-protector rear door locks
- Rear-seat adjustable outboard headrests
- Center high-mount stop lamp (CHMSL)
- 4-wheel disc brakes (standard on V6 models)
- Child Restraint Seat (CRS) tether anchors

A focus on safety.

Camry has been named "A Best Pick" by the Insurance Institute for Highway Safety.[†] And it's not surprising since Camry is engineered to help you handle the unexpected. Accident-avoidance features like variable-assist power rack-and-pinion steering and available anti-lock brakes are paired with a strong reinforced passenger compartment that includes front and rear crumple zones and sturdy side-impact door beams. Camry also offers available front side-impact air bags and Traction Control (TRAC).***

*See page 21 for more information on Toyota's driver and front passenger air bag and front seat-mounted side-impact air bag Supplemental Restraint Systems (SRS).
 **Available on V6 models with automatic transmission.
 †Insurance Institute for Highway Safety, January 7, 1997. www.highwaysafety.org



Side-Impact Air Bag
 Take a detailed look at Camry's safety features at
www.toyota.com/camry/safety



Camry's award-winning quality.

Camry is well-known for its outstanding quality and reliability. And much of the credit goes to the people who work at Toyota Motor Manufacturing Kentucky (TMMK). The vast majority of Camrys sold in America are assembled in Georgetown, Kentucky, by some of the most talented and committed men and women in the automotive industry. Over the years, their efforts have resulted in numerous awards for manufacturing excellence. You, in turn, reap the benefits of a car you'll be proud to own and drive: the 2001 Toyota Camry.







CE standard 15" wheel cover



LE standard 15" wheel cover
LE available 15" aluminum alloy wheel



Gallery Series standard 15" chrome wheel cover
Gallery Series available 15" 5-spoke aluminum alloy wheel



CE STANDARD FEATURES¹

- Aerodynamic multi-reflector halogen headlamps with auto-off feature
- P205/65R15 tires on 15" steel wheels with full wheel covers
- Dual black remote-controlled outside mirrors
- High Solar Energy-Absorbing (HSEA) glass
- Washer-linked intermittent windshield wipers
- On-glass antenna
- Driver and front passenger air bag Supplemental Restraint System (SRS)²
- Tilt steering wheel
- Fabric seat and door trim with integrated armrests, dual map pockets and cut-pile carpeting with driver-side footrest
- Multi-adjustable bucket front seats with adjustable headrests
- 60/40 split/fold-down rear seats with fold-down center armrest, adjustable outboard headrests and security locks
- 12-volt auxiliary power outlet
- Digital quartz clock
- Outside temperature gauge
- Front and rear dual cup holders
- Covered center console and lockable illuminated glove box
- Heavy-duty rear window defogger with timer
- Remote hood, trunk and fuel-filler door releases
- Speedometer, tachometer, coolant temperature and fuel level gauges; digital odometer and twin tripmeters
- Air bag, seatbelt, low-fuel level, door-ajar, battery, check engine, oil pressure, brake and taillamp bulb failure warning lights (ABS warning light on ABS-equipped models)
- Deluxe 3-in-1 AM/FM ETR/Cassette/CD with 4 speakers

LE STANDARD FEATURES¹

- All CE Standard Features Plus³:
 - Dual color-keyed power outside mirrors
 - Variable intermittent windshield wipers
 - Driver's seat cushion vertical height adjuster
 - Power windows with driver's auto-down and retained-power features
 - Power door locks with anti-lockout feature
 - Defroster-linked CFC-free air conditioning
 - Cruise control
 - Deluxe 3-in-1 AM/FM ETR/Cassette/CD with 6 speakers
- V6 models add:**
- Anti-lock Brake System (ABS)—includes Daytime Running Lights (DRL) with auto on/off feature

GALLERY SERIES STANDARD FEATURES¹

- All CE and LE Standard Features Plus³:
 - Two-tone exterior paint⁴
 - "Gallery Series" badging
 - Chrome-finish full wheel covers
 - Chrome-tipped exhaust
 - Perforated leather-wrapped steering wheel, shift knob and parking brake lever
 - Carbon fiber-style center console trim
 - Chrome inside door lock levers and air conditioning vent accents
 - "Gallery Series" embroidered floor mats
 - Upgraded two-tone seat fabric and power driver's seat
 - Remote keyless entry system with panic feature
- V6 models add:**
- JBL Premium 3-in-1 AM/FM ETR/Cassette/CD with 8 speakers in 6 locations and FM diversity reception

XLE STANDARD FEATURES¹

- All CE and LE Standard Features Plus³:
 - Dual color-keyed heated power outside mirrors
 - P205/65R15 tires on 15" aluminum alloy wheels
 - Leather-wrapped steering wheel
 - Multi-adjustable power driver's seat with lumbar support and power passenger seat
 - Remote keyless entry system with panic feature
 - JBL Premium 3-in-1 AM/FM ETR/Cassette/CD with 8 speakers in 6 locations and FM diversity reception
- V6 models add:**
- P205/60R16 tires on 16" aluminum alloy wheels

¹See page 15 for a complete list of factory features.

EXTRA VALUE PACKAGES**ADDITIONAL OPTIONS****CE**

- Air conditioning, Power Package (power windows, door locks and dual color-keyed mirrors), variable intermittent windshield wipers and carpeted floor mats

- Anti-lock Brake System (ABS)—includes Daytime Running Lights (DRL)
- Black front and rear mudguards
- Driver and front passenger seat-mounted side-impact air bag Supplemental Restraint System (SRS)^{1,2}
- Cruise control

LE**4-cylinder models:**

- Remote keyless entry system, power driver's seat and carpeted floor mats
- Remote keyless entry system, power driver's seat, carpeted floor mats and Anti-lock Brake System (ABS)

V6 models add:

- Remote keyless entry system, power driver's seat, JBL Premium 3-in-1 AM/FM ETR/Cassette/CD with 8 speakers in 6 locations and FM diversity reception
- Leather Trim Package (leather-trimmed seats, door trim, leather-wrapped steering wheel and shift knob, driver's lumbar support and front seatback pockets), remote keyless entry system, JBL Premium 3-in-1 AM/FM ETR/Cassette/CD with 8 speakers in 6 locations and FM diversity reception, and carpeted floor mats

All models:

- 15" aluminum alloy wheels
 - Power tilt/slide moonroof with sliding sunshade and maplight
 - Black front and rear mudguards
 - Driver and front passenger seat-mounted side-impact air bag Supplemental Restraint System (SRS)²
 - JBL Premium 3-in-1 AM/FM ETR/Cassette/CD with 8 speakers in 6 locations and FM diversity reception
- V6 models add:**
- Traction Control (TRAC)—automatic transmission models only

GALLERY SERIES

- None

All models:

- 15" 5-spoke aluminum alloy wheels
 - Power tilt/slide moonroof with sliding sunshade and maplight
 - Black front and rear mudguards
 - Driver and front passenger seat-mounted side-impact air bag Supplemental Restraint System (SRS)²
- V6 models add:**
- Traction Control (TRAC)

XLE

- JBL Premium 3-in-1 AM/FM ETR/Cassette/CD with 6-disc in-dash changer, 8 speakers in 6 locations and FM diversity reception; Leather Trim Package (leather-trimmed power seats, door trim and shift knob); driver and front passenger seat-mounted side-impact air bag Supplemental Restraint System (SRS)²; power tilt/slide moonroof with sliding sunshade and maplight; and carpeted floor and trunk mats

All models:

- Black front and rear mudguards
 - Driver and front passenger seat-mounted side-impact air bag Supplemental Restraint System (SRS)²
- V6 models add:**
- Traction Control (TRAC)

TOYOTA FINANCIAL SERVICES³

You're thinking about driving a Toyota. You may also be thinking about whether you should buy or lease your Toyota. Toyota Financial Services (TFS) offers a variety of finance and lease programs to complement your lifestyle and work within your budget. Ask your participating dealer about our Toyota Touch Lease Plan, Retail Finance Plan, Toyota Touch Preferred Option Finance Plan and College Graduate

Finance Program. We are confident there is a TFS program tailored to meet your needs. At TFS we realize that buying or leasing a vehicle is a major investment. To help you protect your investment over time, we've developed a broad spectrum of quality insurance products. Whether you plan to buy or lease, in most cases you may include the cost of TFS insurance products in your financing contract. Ask

your participating dealer about our Toyota Extra Care vehicle service agreements, Guaranteed Auto Protection (GAP) coverage, Toyota Auto Care prepaid maintenance plans and Credit Insurance Program. Your peace of mind is our priority. Like to share your thoughts? Please call our Customer Assistance Center at 1-800-331-4331.

WARRANTIES⁴

Every Toyota Car and Truck has excellent warranty coverage. However, given Toyota's worldwide reputation for quality, reliability and dependability, you may never find out just how good our new vehicle warranty really is. But, should you ever need it, we've definitely got you covered. **Basic Coverage:** All components other than normal wear and maintenance items are covered for 36 months/36,000 miles.

Powertrain Coverage: Your engine, transmission/transaxle, front-wheel drive, rear-wheel drive, seatbelts and air bags are covered for

Federal Emission Coverage: Components under the federal emission defect warranty are covered for 36 months/36,000 miles and specified major emission control components are covered for 8 years/80,000 miles. Specified major emission control components under emission performance warranty are also covered for 8 years/80,000 miles. In addition, emission performance warranty is applicable for 24 months/24,000 miles in states and local jurisdictions that require a periodic

36 months/50,000 miles and specific control devices are covered for 7 years/70,000 miles.

Accessory Warranty: Toyota-approved accessories are covered for 12 months, regardless of mileage, or for the remainder of any new vehicle warranty (except for car covers, which are covered for 12 months).

An Added Benefit: You may be eligible for transportation assistance if your vehicle is required to be kept overnight for warrantable repairs.

SPECIFICATIONS	CE 4-CYL	LE 4-CYL ⁵	LEV ⁵	XLE 4-CYL	XLEV6
MECHANICAL/PERFORMANCE					
Engine	2.2-liter DOHC 16-valve EFI 4-cylinder 136 hp @ 5,200 rpm ⁶ 150 lb.-ft. @ 4,400 rpm ⁷	2.2-liter DOHC 16-valve EFI 4-cylinder 136 hp @ 5,200 rpm ⁶ 150 lb.-ft. @ 4,400 rpm ⁷	3.0-liter DOHC 24-valve EFI V6 194 hp @ 5,200 rpm ⁸ 209 lb.-ft. @ 4,400 rpm ⁹	2.2-liter DOHC 16-valve EFI 4-cylinder 136 hp @ 5,200 rpm ⁶ 150 lb.-ft. @ 4,400 rpm ⁷	3.0-liter DOHC 24-valve EFI V6 194 hp @ 5,200 rpm ⁸ 209 lb.-ft. @ 4,400 rpm ⁹
Ignition	Electronic, with distributorless Toyota Direct Ignition system (TDI)				
Transmission	Standard	NA	Standard ¹⁰	NA	NA
5-speed manual overdrive	Standard	NA	Standard ¹⁰	NA	NA
4-speed electronically controlled automatic overdrive (ECT)	Available	Standard	NA	Standard	NA
4-speed electronically controlled automatic overdrive with intelligence (ECT-i)	NA	NA	Available	NA	Standard
Drivetrain	Front engine, front-wheel drive				
Body construction	Unitized body with front and rear vibration-dampening sub-frames				
Suspension	MacPherson strut front suspension with gas-filled shock absorbers and stabilizer bar; dual-link independent MacPherson strut rear suspension with gas-filled shock absorbers and stabilizer bar				
Steering	Variable-assist power rack-and-pinion				
Turning circle diameter, curb to curb (ft.)	35.4	35.4	36.7	35.4	36.7
Brakes	Power-assisted ventilated front disc/rear drum (power-assisted ventilated front, solid rear disc on V6 models)				
4-channel 3-sensor Anti-lock Brake System (ABS)	Available	Available	Standard	Standard	Standard
All-speed Traction Control System (TRAC)	NA	NA	Available ¹¹	NA	Available
EXTERIOR DIMENSIONS (IN.)					
Overall height, unloaded	55.4	55.4	55.4	55.4	55.4
Overall width	70.1	70.1	70.1	70.1	70.1
Overall length	188.5	188.5	188.5	188.5	188.5
Wheelbase	105.2	105.2	105.2	105.2	105.2
Ground clearance	5.1	5.1	5.1	5.1	5.1
Tread width (front/rear)	61.1/59.9	61.1/59.9	61.1/59.9	61.1/59.9	61.1/59.9
Coefficient of drag (Cd)	0.30	0.30	0.30	0.30	0.30
INTERIOR DIMENSIONS FRONT/REAR (IN.)					
Head room	38.6/37.6	38.6/37.6	38.6/37.6	38.6/37.6	38.6/37.6
Shoulder room	56.2/56.1	56.2/56.1	56.2/56.1	56.2/56.1	56.2/56.1
Hip room	54.0/54.1	54.0/54.1	54.0/54.1	54.0/54.1	54.0/54.1
Leg room	43.5/35.5	43.5/35.5	43.5/35.5	43.5/35.5	43.5/35.5
Seating capacity	5	5	5	5	5
WEIGHTS AND CAPACITIES					
Curb weight, manual/automatic (lbs.)	2,998/3,042	NA/3,120	3,175/3,241	NA/3,131	NA/3,252
EPA passenger volume (cu. ft.)	96.9	96.9	96.9	96.9	96.9
Luggage capacity, rear seatbacks up (cu. ft.)	14.1	14.1	14.1	14.1	14.1
Fuel tank (gals.)	18.5	18.5	18.5	18.5	18.5
TIRES					
Size	P205/65R15	P205/65R15	P205/65R15	P205/65R15	P205/60R16
Type	All-Season steel-belted radial	All-Season steel-belted radial	All-Season steel-belted radial	All-Season steel-belted radial	All-Season steel-belted radial
Spare	Full-size	Full-size	Full-size	Full-size	Full-size
MILEAGE ESTIMATES (EPA ESTIMATED MPG CITY/HIGHWAY)¹²					
Manual transmission	23/32	NA	21/28	NA	NA
Automatic transmission	23/30	23/30	20/28	23/30	20/28

¹Requires CE Extra Value Package.

²The Toyota driver, front passenger and front seat-mounted side-impact air bags are Supplemental Restraint Systems (SRS). The driver and front passenger air bags are designed to inflate in a severe frontal collision. The side-impact air bags are designed to inflate in severe side-impact collisions. In all other accidents, the air bags will not inflate. To decrease the risk of injury from a deploying air bag, always wear seatbelts, sit upright in the seat, and do not lean back. For more details, see the air bag model's and do not

³Toyota Financial Services is a service mark used by Toyota Motor Credit Corporation and Toyota Motor Insurance Services, Inc. Products are available through your participating Toyota dealer. See your participating dealer regarding features and benefits, requirements and eligibility conditions on these and other Toyota Financial Services products, programs and services.

⁴See your Toyota dealer for more details about the new vehicle warranty.

⁵Specifications also apply to Gallery Series.

⁶133 hp @ 5,200 rpm with California emissions.

⁷Automatic transmission model only.

⁸Preliminary EPA mileage estimates determined by Toyota. Final EPA mileage estimates not available at time of printing. See your Toyota dealer for details.

Some vehicles are shown with available equipment. For details on vehicle specifications, standard features and available equipment in your area, contact your Toyota dealer. A vehicle with particular equipment may not be available at the dealership. Ask your Toyota dealer to help locate a

1-800-GO-TOYOTA

©2000 Toyota Motor Sales, U.S.A., Inc.
PCI-001 (8/00) 00616-DICAM
1800 in U.S.A. (700M)

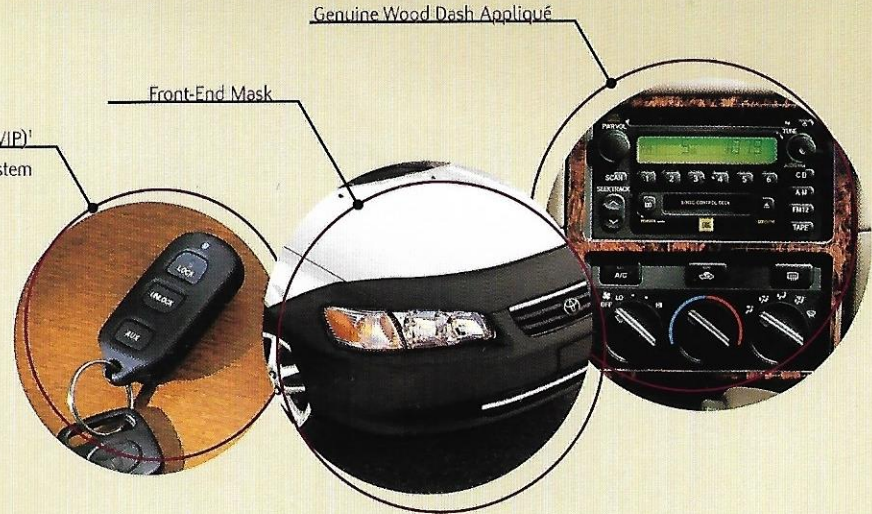


PRINTED ON RECYCLED PAPER
100% POST-CONSUMER WASTE



6-Disc Trunk-Mounted CD Changer

Toyota Vehicle Intrusion Protection (VIP)¹
RS3200 Security System



Front-End Mask

Genuine Wood Dash Appliqué

Your ownership experience.

From that first drive home in your new Camry until the day you part with it, we want your entire ownership experience to be enjoyable and satisfying. That's why at every Toyota dealership you'll find answers to your questions, help with selecting Genuine Toyota Parts and accessories, and quality service to help keep your Camry in top shape. The location of your nearest Toyota dealer can be found on our Web site at toyota.com.

ACCESSORIES

It's easy to add your own finishing touches to Camry with Toyota options and accessories. Remember, Toyota vehicles are built with popular option combinations. Not all options are available separately, and some options and accessories may not be available in all regions of the country. So see your Toyota dealer who can help locate the Camry that's right for you.

- Front-End Mask
- Mudguards
- 15" Aluminum Wheels
- Wheel Cover
- Wheel Locks
- Gold Emblem Package
- Black Pearl Emblem Package
- Moonroof Wind Deflector
- Yakima® Rack Systems
- Color-Keyed Rear Spoiler with LED Center High-Mount Stop Lamp (CHMSL)
- License Plate Frames by Grenada®
- Center Armrest
- Genuine Wood Dash Appliqué
- Carpeted Floor Mats
- All-Weather Floor Mats
- Auto-Dimming Mirror
- Toyota Vehicle Intrusion Protection (VIP) RS3200 Security System¹
- Toyota Vehicle Intrusion Protection (VIP) RS3200 Plus Security System²
- Glass Breakage Sensor (GBS)³
- Remote Trunk Release⁴
- Cargo Net
- Cargo Organizer
- Carpeted Trunk Mat
- 6-Disc Trunk-Mounted CD Changer



1. Available for vehicles without factory security or optional burglar alarm. 2. Available for vehicles without factory security or optional burglar alarm. 3. Available for vehicles without factory security or optional burglar alarm. 4. Available for vehicles without factory security or optional burglar alarm.



ECHO



Celica



MR2 Spyder



Camry



Solara



Solara Convertible



Avalon



Sienna



Corolla



Prius

Life is full of choices. Here are ours.



Tundra Access Cab



Tacoma Xtracab



Land Cruiser



4Runner



RAV4



Sequoia



Highlander

(Available November 2000)

(Available February 2001)