

2020 Camry



 Let's
Go
Places

Surpass all expectations.

The 2020 Toyota Camry proves that sensibility, exhilarating performance and heart-stopping style can go hand in hand. You'll immediately notice its sleek, evocative exterior, which seduces the senses with bold contours and a wide stance. Slip inside, and you'll find a welcoming environment that caters to your every whim. Then shift into Drive to discover how Camry is much more than just alluring looks, thanks to three sophisticated powertrains and a next-generation platform that reduces weight and lowers the center of gravity for a sharpened response. And with Toyota Safety Sense™ P (TSS-P)³⁵ standard on every model, Camry helps protect as well as it comforts. So whatever you desire in a midsize sedan, you'll find it all in one stylish package that pushes all the right limits.



Left to right: **XSE V6** shown in Wind Chill Pearl² and Midnight Black Metallic roof² with available Driver Assist Package; **XSE V6** shown in Supersonic Red² with available Driver Assist Package. 2019 models shown.

See numbered footnotes in Disclosures section.



INVITING INTERIOR

Slip into a premium space that puts a premium on your comfort. Thanks to the Toyota New Global Architecture (TNGA) platform, Camry's seats are strategically positioned to create more space you can actually feel. Turn up the volume on style with Camry's available Cockpit Red leather-trimmed seats. You'll be welcomed with dynamic and supportive front and rear seats, upscale textured metal moldings and ambient interior lighting. It's a practical and stylish cabin with an exceptional attention to detail.



XSE V6 interior shown in Cockpit Red leather trim with available Driver Assist Package. 2019 model shown.



XSE V6 shown in Supersonic Red² with available Navigation Upgrade Package. 2019 model shown.

Leave a lasting impression.

Camry XSE's powerful stance and captivating style announce your arrival with authority. Its muscular shape is defined by sweeping curves and chiseled surfaces. Sport side rocker panels and an integrated rear spoiler not only emphasize its coiled stance, but also redirect airflow to enhance efficiency and performance. Push these limits even further with unique catamaran-inspired accents and a black sport mesh grille, culminating in a seductive blend of sinuous lines and sharp, unconstrained edges that makes an impact.



19-IN. MACHINED-FINISH ALLOY WHEELS

Add to the allure with the lustrous black hue found on Camry XSE's 19-in. alloy wheels. The deep color dramatically contrasts the exquisite machined finish of the V-shaped spokes. Low-profile 40-series tires complete the distinctive look while providing a precise, confidence-inspiring drive.



LED HEADLIGHTS WITH LED DAYTIME RUNNING LIGHTS (DRL)

Camry XSE's LED headlights and fully integrated LED Daytime Running Lights (DRL) add an illuminating touch. This expressive look is highlighted by a design inspired by the symmetrical lines in the sand of a Japanese Zen garden.



LED TAILLIGHTS

Camry XSE's LED taillights feature an eye-catching organic shape. It's a powerful look that flows seamlessly into the rear bumper. Stylish lights like these are the perfect way to brighten any drive.

EXTERIOR STYLING



XSE V6 shown in Supersonic Red² with available Driver Assist Package. 2019 model shown.

See numbered footnotes in Disclosures section.

Emerge out of the shadows.

Turn even more heads with Camry SE Nightshade Edition. Available in Midnight Black Metallic, Celestial Silver Metallic and Super White exterior colors, this special edition features black accents guaranteed to stand out when the sun is up or down. Every element, from the black window moldings to the black mirror caps to the black rear spoiler, lets you bring more attitude to every commute.

18-IN. BLACK ALLOY WHEELS

Stand out from the rest. Camry SE Nightshade Edition comes with sleek 18-in. black alloy wheels that take it to a new level of aggression and style.

BLACK BADGING

Turn out the lights. The blacked-out theme is complete with Camry SE Nightshade Edition's black exterior rear badging.



SE NIGHTSHADE EDITION



SE Nightshade Edition shown in Midnight Black Metallic.

Take a commanding view.

It's a space that's all about you with an inviting, wide-open sensation. Get behind the wheel and the driver-centric position envelops you. Thanks to the perfectly placed steering wheel controls, everything you want is right at your fingertips. The available 10-in. color Head-Up Display (HUD) projects important information such as your speed, turn-by-turn directions,⁵⁹ and more, right onto the lower portion of the windshield. It helps you stay focused on the road ahead.



7-IN. COLOR MULTI-INFORMATION DISPLAY (MID)

Standard on XLE and XSE, the 7-in. color Multi-Information Display presents turn-by-turn directions,⁵⁹ safety info and alerts right where you want them. It will also display your current and average fuel economy, and audio presets.

8-IN. MULTIMEDIA TOUCH-SCREEN

Camry offers an available 8-in. multimedia touch-screen with intuitive pinch-and-zoom navigation controls for a familiar experience. You'll even welcome longer trips, thanks to its available 9-speaker, 800-watt JBL® w/Clari-Fi²² Audio system.



DRIVER'S INTERIOR



XSE V6 interior shown in Black leather trim with available Navigation Upgrade Package.²³ 2019 model shown.

See numbered footnotes in Disclosures section.

Unleash your inner thrill seeker.

Camry's breathtaking performance indulges your sporty side. By taking advantage of the light and strong Toyota New Global Architecture (TNGA) platform, both handling and ride quality are enhanced. And the lower, wider stance delivers a crisp, responsive feel while offering an optimal driving position. Choose between a 2.5-liter Dynamic Force 4-cylinder or an available 3.5-liter V6 gasoline engine, each of which comes paired to a Direct Shift 8-Speed Automatic Transmission. Coupled with the refined suspension, they help Camry deliver an impressive drive without suppressing your comfort. It's time to take the long way — and celebrate every moment.

ENGINE OPTIONS

Camry offers a compelling choice of gasoline engines, a proficient 203-hp 2.5-liter Dynamic Force 4-cylinder and a muscular 301-hp 3.5-liter V6, each delivering a sophisticated blend of performance and efficiency. Both engines utilize the D-4S direct-injection system, which selects the optimal injection method based on driving conditions to pack a powerful punch with enhanced fuel economy to boot. It proves the rational choice can also be an exciting one.



DIRECT SHIFT 8-SPEED ELECTRONICALLY CONTROLLED AUTOMATIC TRANSMISSION

Camry's refined Direct Shift 8-Speed Automatic Transmission enhances every drive. Its use of lightweight materials and low center of gravity improve driving stability, provide a smooth ride at highway speeds and even help to improve fuel efficiency. Three available distinct drive modes give you even more control. "Sport" indulges your spirited side with a sharper acceleration feel, "ECO" adjusts throttle input to maximize your efficiency and "Normal" blends fuel economy with performance. Thanks to these choices, a perfectly tailored drive arrives with the push of a button.





SUSPENSION

Enjoy the perfect harmony of a drive that's both relaxed and confident, thanks to Camry's sophisticated multi-link rear suspension. It delivers a smooth ride and sharp handling, so you can take on any trip from crosstown to cross-country.



Left to right: **XSE V6** shown in Supersonic Red² with available Driver Assist Package; **XSE V6** shown in Wind Chill Pearl² and Midnight Black Metallic roof² with available Driver Assist Package. 2019 models shown.

See numbered footnotes in Disclosures section.



Three letters, endless dedication.

At Toyota Racing Development (TRD), we've been helping enthusiasts extract more performance from their Toyotas since 1979, and we have no intention of slowing down. Now we've turned our TRD engineers loose on Camry, improving handling, performance and styling. Aerodynamic elements, from the front splitter and the side aero skirts to the rear diffuser and spoiler, boost Camry TRD's aggressive look and help improve high-speed stability.



Left to right: **XSE V6** shown in Supersonic Red² with available Navigation Upgrade Package⁵; 2019 model shown; **TRD** shown in Wind Chill Pearl² with Midnight Black Metallic roof²

See numbered footnotes in Disclosures section.



TRD 19-IN. ALLOY WHEELS WITH RED-PAINTED CALIPERS

Looks that perform. Matte-black alloy wheels on Camry TRD not only look good, but also reduce weight and improve steering responsiveness. Large 12.9-in. diameter front rotors and red-painted dual-piston front calipers give you more stopping power for every twist and turn.



PURPOSEFUL STANCE

Camry TRD takes handling and striking design even further. TRD-tuned shocks improve body control, handling agility and steering precision. Thicker underbody braces increase torsional rigidity and unique coil springs not only drop the vehicle .60 inches for a lower center of gravity, but also enhance the aero kit for an unmistakably aggressive look.

TRD CAT-BACK DUAL EXHAUST

Press the start button, hit the gas and enjoy the aggressive sound of Camry TRD's standard 301-hp 3.5L V6. Specially tuned, the cat-back dual exhaust reduces back pressure and helps optimize efficiency and power. Polished stainless steel TRD exhaust tips finish off its athletic look.



MOTORSPORTS

TRD



BOLD STYLING

The amplified look of Camry TRD will not go unnoticed. A gloss-black front grille with sport mesh insert, aerodynamic TRD-tuned body kit with red pinstripes and a dynamic rear spoiler are just some of Camry TRD's unforgettable details.

TRD shown in Wind Chill Pearl² with Midnight Black Metallic roof.²

See numbered footnotes in Disclosures section.



TRD COCKPIT

Performance you can see and feel. Black sport SofTex®-trimmed³¹ front seats welcome you in, while red accents throughout will remind you of the dedication that goes into every vehicle. From the TRD embroidered headrests to the seatbelts and stitching on the steering wheel, red is used to highlight its sporty interior.

TRD interior shown in Black sport SofTex®³¹ trim.

See numbered footnotes in Disclosures section.

Inside, indulgence awaits.

Camry's passenger cabin fits your needs and feeds your desires with pleasing finishes and textures. It features a meticulous blend of colors and materials, such as the vibrant look and feel of the available Cockpit Red leather-trimmed interior. Camry also offers the Smart Key System³⁸ with Push Button Start to complement your convenience. Available leather-trimmed 8-way power-adjustable driver's and front passenger seats are not only positioned to open up interior space but also allow you to personalize your comfort with the ability to warm up or cool down. Settle in and hold on to the leather-trimmed steering wheel and feel an intimate, tactile connection with the road.



PADDLE SHIFTERS

When the drive takes a spirited turn, Camry's available steering wheel-mounted paddle shifters give you the power to shift gears manually for a more controlled experience. They make extremely fast shifts possible with a precise, responsive feel.



AVAILABLE HEATED AND VENTILATED FRONT SEATS

Camry features available heated and ventilated front seats that warm up or cool down on demand. Their distinctively shaped available leather trim and contrast stitching also highlight details to ensure your style never takes a back seat.



PANORAMIC GLASS ROOF

Brighten each day with Camry XSE's available panoramic glass roof with front power tilt/slide moonroof, which invites in more than twice the light of a traditional moonroof. A power-retractable sunshade helps you stay in control if things start to heat up.

SPORTY INTERIOR



XSE V6 interior shown in Cockpit Red leather trim with available Navigation Upgrade Package.²³ 2019 model shown.

See numbered footnotes in Disclosures section.

Enjoy a more connected drive.

Get inside a welcoming space that listens to your needs and speaks to your sense of style. Immerse yourself in the available ambient lighting to help create the perfect mood for any drive. Camry also offers peace of mind with available Safety Connect,¹³ which includes enhanced 24/7 Roadside Assistance,⁶⁰ and available Service Connect's¹⁸ remote diagnostics linked directly to your local dealer. And with Amazon Alexa⁶ compatibility, you can simply ask to play music, read the news, control your smart home, tell a joke and more.¹²



WI-FI CONNECT⁵

Never miss a connection with Camry's available Wi-Fi Connect. The onboard system supports up to five devices, turning Camry into a hotspot almost anywhere you go. Add available Qi-compatible wireless smartphone charging²⁸ and leave your wires and worries behind.

APPLE CARPLAY⁶⁵ COMPATIBILITY

Bring along a familiar face. With Apple CarPlay⁶⁵ compatibility, you can use your compatible iPhone⁶² with Camry's audio multimedia system to get directions, make calls, send and receive messages, and listen to music, while staying focused on your commute. Screen depiction accurate as of summer 2019.

PREMIUM JBL²² AUDIO

Specifically optimized for Camry's cabin, the available JBL²² w/Clari-Fi[®] Audio system re-creates the deep, rich sound typically lost while streaming music. With 800 watts of peak power and nine speakers, including a subwoofer and separate tweeters, it has more than enough range to power your playlist. You'll drive soundly knowing Camry can carry your tunes.

ANDROID AUTO^{TM4} COMPATIBILITY

By pairing your compatible Android^{TM63} phone with Camry, you can access your Google Assistant^{TM64, 65} get real-time traffic alerts, make and receive phone calls, listen to your favorite soundtrack or find a place to eat — all while keeping your hands on the wheel.

INTERIOR CONVENIENCE

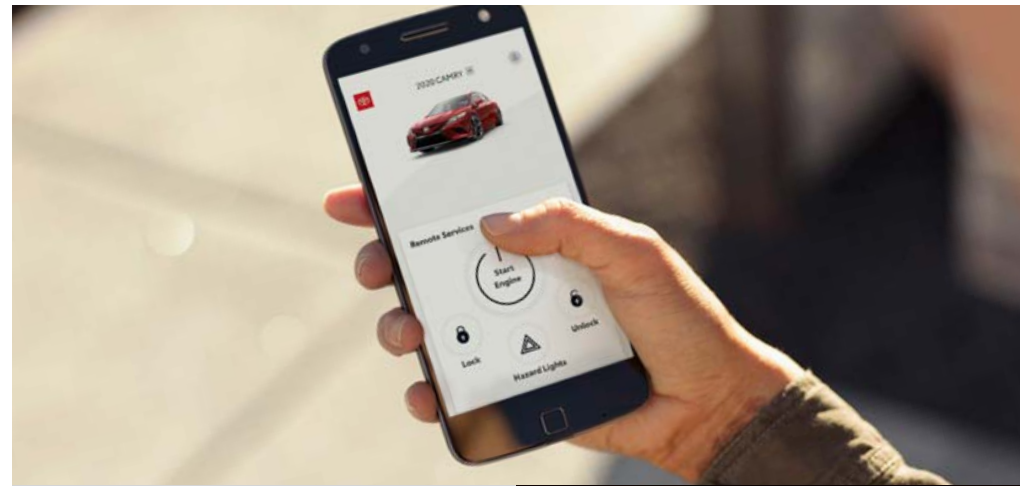


XLE V6 interior shown in Ash leather trim with available Navigation Upgrade Package.²³ 2019 model shown.

See numbered footnotes in Disclosures section.

Helping you watch out.

Out of sight, but never out of mind. Camry is on the lookout with its available Bird's Eye View Camera³⁶ with Perimeter Scan. Available Intelligent Clearance Sonar (ICS)⁵¹ helps you navigate around hidden obstacles. Even when you're away from your Camry, you can stay connected with available Remote Connect.²⁰ It can help remotely monitor guest drivers, control interior temps and even locate your Camry in a crowded lot. Innovative features like these provide another point of view to help make your drive safe for everyone.



BIRD'S EYE VIEW CAMERA³⁶ WITH PERIMETER SCAN

Camry's available Bird's Eye View Camera with Perimeter Scan uses front-, side- and rear-mounted cameras to display a panoramic overhead view. It helps you see more of your surroundings, so you can drive with confidence. Screen image simulated.



INTELLIGENT CLEARANCE SONAR⁵¹ WITH REAR CROSS-TRAFFIC BRAKING⁵²

Get in and out of the tightest spots with ease, thanks to Camry's available Intelligent Clearance Sonar (ICS) with Rear Cross-Traffic Braking (RCTB). This system is designed to warn you when it detects nearby obstacles, and if necessary, will reduce engine power and apply the brakes. Screen image simulated.



INNOVATIVE TECHNOLOGY



XLE V6 shown in Brownstone with available Driver Assist Package. Simulation shown.

HYBRID

Good for all. Even better for you.

The transportation revolution continues. The powerful, stylish Camry Hybrid offers elevated performance and exceptional fuel economy, along with advanced tech and a striking look that will leave you breathless. Its dependability has been refined for more than a decade, and speaks to the reliability of Toyota's proven hybrid technology.

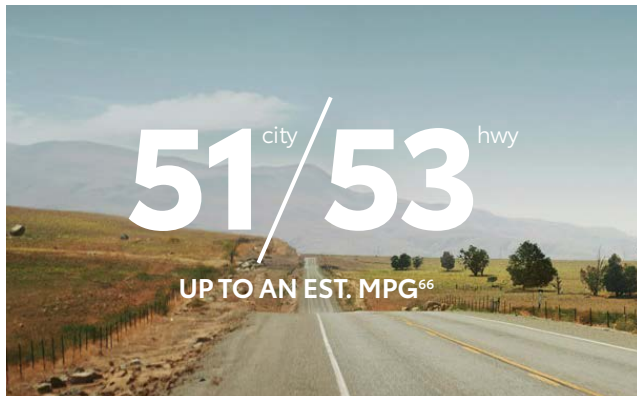
Camry Hybrid's elevated efficiency arrives with a remarkably stunning drive, thanks to its hybrid system. The hybrid powertrain produces ample torque along with responsive acceleration. Optimally positioning the hybrid battery and employing the same sophisticated multi-link rear suspension as the gas-powered Camry helps Camry Hybrid conquer every twist and turn. It's an exciting drive that lets you do even more.



Hybrid XLE shown in Celestial Silver Metallic with available Driver Assist Package.

Complete any journey in total comfort.

Camry Hybrid's interior invites you to do more with a design that's both practical and stylish. Fine details, such as the LE's layered wood accent elements, can be found throughout the cabin. Personalize any trip with a choice of drive modes. ECO Mode maximizes fuel economy, while EV Mode³⁴ enables electric driving. The energy monitor displays how the power is being delivered to the drive wheels. It's smart tech wrapped in a sensational package.



IMPRESSIVE MPG

The design and performance of Camry Hybrid's Dynamic Force 4-cylinder engine, along with a proven electric motor and smooth-shifting ECVT, help deliver a remarkably efficient drive. It's the best of both worlds, blending a stirring drive and optimized fuel economy.



ENERGY MONITOR

Tracking your efficiency is easy with Camry Hybrid's energy monitor. As driving conditions change, the monitor uses both the Audio display and available Head-Up Display (HUD) to show you how power is being routed to the drive wheels or how otherwise wasted energy is captured to charge the battery.



EV³⁴/ECO/NORMAL/SPORT MODE

Camry Hybrid's Sport Mode improves throttle response, while ECO Mode adjusts throttle input to maximize your efficiency. EV Mode enables electric driving to help reduce noise and emissions. More choices give you a more controlled drive.

HYBRID INTERIOR



Hybrid XLE interior shown in Ash leather trim with available Navigation Upgrade Package.²³ 2019 model shown.

See numbered footnotes in Disclosures section.



Helping to make the road a safer place.

Camry's standard Toyota Safety Sense™ P (TSS-P)³⁵ is an active safety package that combines Pre-Collision System with Pedestrian Detection (PCS w/PD),⁴⁸ Lane Departure Alert with Steering Assist (LDA w/SA),³³ Automatic High Beams (AHB)⁴⁹ and Dynamic Radar Cruise Control (DRCC)³² to assist you. TSS-P's comprehensive features create in-the-moment safety designed to help keep you safe under certain circumstances.



LANE DEPARTURE ALERT WITH STEERING ASSIST (LDA w/SA)³³

Under certain circumstances, Lane Departure Alert with Steering Assist (LDA w/SA) is designed to help detect lane departure on roads with visible lane markings. LDA only activates when you're traveling at a speed of 32 mph or faster. When you hear and see the alert, after carefully checking the road around you, safely direct your vehicle back to the center of your lane. In addition, if the system senses that you're unintentionally drifting, it may automatically make small corrective steering inputs to help keep your vehicle in its lane.



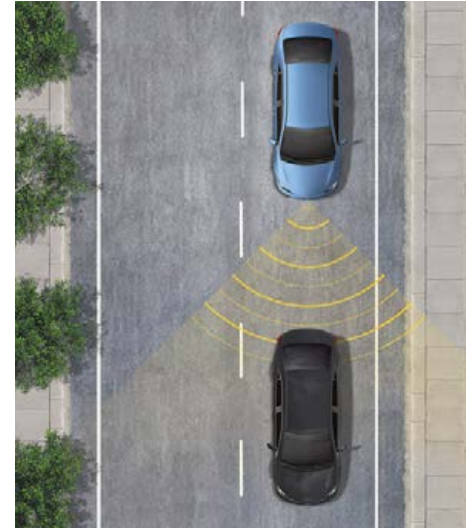
AUTOMATIC HIGH BEAMS (AHB)⁴⁹

The Automatic High Beams (AHB) feature is a safety system designed to help you see more clearly at night — without distracting other drivers. Designed to activate at speeds above 25 mph, AHB relies on an in-vehicle camera to help detect the headlights of oncoming vehicles and taillights of preceding vehicles, then automatically toggles between high and low beams accordingly to provide the appropriate amount of light. By using high beams more frequently, the system may allow for earlier detection of pedestrians and obstacles.



PRE-COLLISION SYSTEM WITH PEDESTRIAN DETECTION (PCS w/PD)⁴⁸

Pre-Collision System with Pedestrian Detection (PCS w/PD) is designed to help keep the road safe by detecting a vehicle or a pedestrian in certain situations. By combining millimeter-wave radar with a camera capable of certain shape recognition, the system provides an audio/visual alert, warning you of a possible collision under certain circumstances. If you don't react, the system is designed for automatic braking support to help mitigate the potential for a collision.



DYNAMIC RADAR CRUISE CONTROL (DRCC)³²

Intended for highway use and similar to "constant speed" cruise control, available Full-Speed Range Dynamic Radar Cruise Control (DRCC) lets you drive at a preset speed. DRCC uses vehicle-to-vehicle distance control, which is designed to adjust your speed, to help you maintain a preset distance from the vehicle ahead of you that is driving at a slower speed. DRCC uses a front-grille-mounted radar and an in-vehicle camera designed to detect vehicles and their distance. If a driver is traveling slower than you, or within your preset range, DRCC is designed to automatically slow your vehicle down without deactivating cruise control. If DRCC determines you need to slow down more, an audio and visual alert notifies you and brakes may be applied. When there's no longer a vehicle driving slower than your preset speed in front of you, DRCC will then accelerate to the preset speed and regular cruise control will resume.

TOYOTA SAFETY SENSE™ (TSS)



SE shown in Midnight Black Metallic with available Audio Upgrade Package and power tilt/slide moonroof.

Smart safety. Helping you drive with confidence.

Camry offers an available Blind Spot Monitor (BSM)³ with Rear Cross-Traffic Alert (RCTA).⁵⁰ They help you see more of what matters. Available Safety Connect^{®13} provides enhanced 24/7 Roadside Assistance⁶⁰ with the touch of a button and automatic collision notification. Camry even protects itself with an anti-theft alarm. It's a complete approach to vehicle safety, so you can drive with confidence.

BLIND SPOT MONITOR³ WITH REAR CROSS-TRAFFIC ALERT⁵⁰

The available Blind Spot Monitor is designed to warn you when a vehicle in the next lane enters Camry's blind spot on either side. Available Rear Cross-Traffic Alert works when Camry is in Reverse to help detect vehicles approaching from either side. If the system senses cross traffic, it warns you with side mirror indicators and a warning tone.



10 airbags

TEN AIRBAGS⁴⁶ STANDARD

Camry comes standard with an Advanced Airbag System with dual-stage SRS driver and front passenger airbags, in addition to front and rear side curtain airbags. Ten airbags in all — all focused on your safety.

STAR SAFETY SYSTEM™

Smart tech helps keep you safe. This standard comprehensive suite of six advanced active safety features is designed to help keep you out of harm's way. The system includes enhanced Vehicle Stability Control (VSC);⁴³ Traction Control (TRAC), Anti-lock Brake System (ABS), Electronic Brake-force Distribution (EBD), Brake Assist (BA)⁴⁴ and Smart Stop Technology® (SST).⁴⁵



STANDARD SAFETY



XSE V6 shown in Supersonic Red² with available Driver Assist Package. 2019 model shown.

See numbered footnotes in Disclosures section.

Soul-stirring design. Heart-racing performance.
It's time to captivate your senses.



Hybrid XLE shown in Celestial Silver Metallic with available Driver Assist Package;
XSE V6 shown in Supersonic Red² with available Driver Assist Package. 2019 models shown.

See numbered footnotes in Disclosures section.

CAMRY MODELS



L

Powertrain

- 2.5-Liter Dynamic Force 4-Cylinder Engine with 203 hp @ 6600 rpm
- 29 city/41 hwy/34 combined est. mpg⁵⁸
- Direct Shift-8AT (8-Speed Electronically Controlled automatic Transmission)

Exterior Features

- Bi-LED combination headlights with auto on/off feature
- LED Daytime Running Lights (DRL) with on/off feature
- 16-in. steel wheels and P205/65R16 tires
- Shark-fin antenna

Interior and Safety Features

- Toyota Safety Sense™ P (TSS-P)³⁵
- Integrated backup camera³⁸ with projected path
- Audio — includes 7-in. touch-screen with Android Auto™⁴ & Apple CarPlay⁹⁵ & Amazon Alexa⁶ compatibility
- 4.2-in. TFT Multi-Information Display (MID)
- Fabric-trimmed front seats with passenger-side seatback pocket; 6-way adjustable driver and front passenger seat
- Hill Start Assist Control (HAC)⁵³

LE

Adds to or replaces features offered on L

Powertrain

- 2.5-Liter Dynamic Force 4-Cylinder Engine with 203 hp @ 6600 rpm
- 28 city/39 hwy/32 combined est. mpg⁵⁸
- Direct Shift-8AT (8-Speed Electronically Controlled automatic Transmission)

Exterior Features

- 17-in. alloy wheels and P215/55R17 tires

Interior and Safety Features

- Fabric-trimmed front seats with passenger-side seatback pocket; 8-way power-adjustable driver's seat with power lumbar support; 6-way adjustable front passenger seat
- 60/40 split fold-down rear seat with center armrest with cup holders
- Three USB ports⁷ (one 1.5V and two 2.1V)
- Anti-theft system with alarm

Options and Packages

- Power tilt/slide moonroof
- Convenience Package includes
 - Smart Key System³⁸
 - HomeLink³⁹ universal transceiver
 - Auto-dimming rearview mirror
- Audio Upgrade Package includes
 - Audio Plus with 8-in. touch-screen
 - Qi-compatible wireless smartphone charging²⁸
 - Dual zone automatic climate control
- Blind Spot Monitor (BSM)³ with Rear Cross-Traffic Alert (RCTA)⁵⁰



XLE

Adds to or replaces features offered on LE

Powertrain

- 2.5-Liter Dynamic Force 4-Cylinder Engine with 203 hp @ 6600 rpm
- 27 city/38 hwy/31 combined est. mpg⁵⁸
- Direct Shift-8AT (8-Speed Electronically Controlled automatic Transmission)

Exterior Features

- LED headlights with fully integrated LED Daytime Running Lights (DRL) with auto on/off feature
- LED taillights
- Bright metallic front grille
- Color-keyed heated power outside mirrors with turn signal and blind spot warning indicators³
- Color-keyed outside door handles with touch-sensor lock/unlock feature
- 18-in. silver machined-finish alloy wheels and P235/45R18 tires
- Single exhaust with chrome finisher

Interior and Safety Features

- Blind Spot Monitor (BSM)³ with Rear Cross-Traffic Alert (RCTA)⁵⁰
- Dual zone automatic climate control with air filter and rear-seat vents
- Integrated backup camera²⁹ with dynamic gridlines
- Audio Plus — includes 8-in. touch-screen with Android Auto™⁴ & Apple CarPlay⁹⁵ & Amazon Alexa⁶ compatibility
- 7-in. TFT Multi-Information Display (MID) with customizable settings
- Qi-compatible wireless smartphone charging²⁸
- Leather-trimmed multi-stage heated front seats with seatback pockets; 8-way power-adjustable driver's seat with power lumbar support; 8-way power-adjustable front passenger seat
- Rear adjustable headrests
- Leather-trimmed tilt/telescopic 3-spoke steering wheel with audio, Multi-Information Display (MID) and Bluetooth⁹⁹ hands-free phone controls
- 3-mode switch (ECO, Normal, Sport)
- Tiger Eye wood interior trim
- Smart Key System³⁸ on front doors and trunk with Push Button Start
- Auto-dimming rearview mirror
- HomeLink³⁹ universal transceiver
- Ambient interior lighting
- Electric Parking Brake (EPB)⁴¹ with Brake Hold⁴²

Options and Packages

- Panoramic glass roof with front power tilt/slide moonroof
- Navigation Upgrade Package²³ includes
 - Premium Audio with JBL® w/Clari-Fi²² and Dynamic Navigation²³
- Driver Assist Package includes
 - 10-in. color Head-Up Display (HUD)
 - Bird's Eye View Camera³⁶ with Perimeter Scan
 - Intelligent Clearance Sonar (ICS)⁵¹ with Rear Cross-Traffic Braking (RCTB)⁵²
 - Multi-stage ventilated front seats



XLE V6

Adds to or replaces features offered on XLE

Powertrain

- 3.5-Liter V6 with 301 hp @ 6600 rpm
- 22 city/33 hwy/26 combined est. mpg⁵⁸
- Direct Shift-8AT (8-Speed Electronically Controlled automatic Transmission)

Exterior Features

- Panoramic glass roof with front power tilt/slide moonroof
- Dual exhaust with chrome finisher

Interior and Safety Features

- Audio Plus with JBL® w/Clari-Fi²² — includes nine speakers including subwoofer and amplifier, 8-in. touch-screen, AM/FM/HD Radio,¹⁷ CD player, USB media port,⁷ two USB charge ports,⁷ advanced voice recognition,⁸ hands-free phone capability and music streaming⁹ via Bluetooth⁹⁹ wireless technology, Android Auto™⁴ & Apple CarPlay⁹⁵ & Amazon Alexa⁶ compatible, SiriusXM¹⁰ with 3-month All Access trial,¹¹ Connected Services¹² — Safety Connect¹³ with 1-year trial,¹⁴ Service Connect¹⁸ with 10-year trial,¹⁹ Remote Connect²⁰ with 1-year trial,²¹ Wi-Fi Connect¹⁵ with up to 2 GB within 3-month trial.¹⁶ See toyota.com/audio-multimedia for details.
- 10-in. color Head-Up Display (HUD) with customizable settings, speedometer, shift position, TSS-P³⁵ indicators, audio, phone, outside temperature and adjustable brightness
- Overhead console with maplights and HomeLink³⁹ universal transceiver (sunglasses storage not available with panoramic roof)
- Dual sun visors with sliding extensions and illuminated vanity mirrors

Options and Packages

- Navigation Upgrade Package²³ includes
 - Premium Audio with Dynamic Navigation²³ and JBL® w/Clari-Fi²²
- Driver Assist Package includes
 - Bird's Eye View Camera³⁶ with Perimeter Scan
 - Intelligent Clearance Sonar (ICS)⁵¹ with Rear Cross-Traffic Braking (RCTB)⁵²
 - Multi-stage ventilated front seats

See numbered footnotes in Disclosures section.

CAMRY MODELS



SE

Adds to or replaces features offered on LE

Powertrain

- 2.5-Liter Dynamic Force 4-Cylinder Engine with 203 hp @ 6600 rpm
- 28 city/39 hwy/32 combined est. mpg⁵⁸
- Direct Shift-8AT (8-Speed Electronically Controlled automatic Transmission)

Exterior Features

- Black front grille with sport mesh insert
- Color-keyed sport side rocker panels
- 18-in. black machined-finish alloy wheels and P235/45R18 tires
- Color-keyed rear spoiler
- Single exhaust with dual chrome tips

Interior and Safety Features

- Single-zone automatic climate control with air filter
- 4.2-in. TFT Multi-Information Display (MID)
- Sport SofTex[®]-trimmed³¹ front seats with fabric inserts, seatback pockets; 8-way power-adjustable driver's seat with power lumbar support; 6-way adjustable front passenger seat
- Leather-trimmed tilt/telescopic 3-spoke steering wheel with paddle shifters, audio, Multi-Information Display (MID) and Bluetooth[®] hands-free controls
- Embossed mesh interior trim
- Tire Pressure Monitor System (TPMS)³⁰ with direct pressure readout

Options and Packages

- Power tilt/slide moonroof
- Convenience Package includes
 - Smart Key System³⁸
 - HomeLink[®] universal transceiver
 - Auto-dimming rearview mirror
- Audio Upgrade Package includes
 - Audio Plus with 8-in. touch-screen
 - Qi-compatible wireless smartphone charging²⁸
 - Dual zone automatic climate control
- Blind Spot Monitor (BSM)³ with Rear Cross-Traffic Alert (RCTA)⁵⁰



XSE

Adds to or replaces features offered on SE

Powertrain

- 2.5-Liter Dynamic Force 4-Cylinder Engine with 206 hp @ 6600 rpm
- 27 city/38 hwy/31 combined est. mpg⁵⁸
- Direct Shift-8AT (8-Speed Electronically Controlled automatic Transmission)

Exterior Features

- LED headlights with fully integrated LED Daytime Running Lights (DRL) with auto on/off feature
- LED taillights
- Gloss-black front grille with sport mesh insert
- Color-keyed heated power outside mirrors with turn signal and blind spot warning indicators³
- Color-keyed outside door handles with touch-sensor lock/unlock feature
- 19-in. black machined-finish alloy wheels and P235/40R19 tires
- Dual exhaust with quad chrome tips

Interior and Safety Features

- Blind Spot Monitor (BSM)³ with Rear Cross-Traffic Alert (RCTA)⁵⁰
- Dual zone automatic climate control with air filter and rear-seat vents
- Integrated backup camera²⁹ with dynamic gridlines
- Audio Plus — includes 8-in. touch-screen with Android AutoTM & Apple CarPlay[®] & Amazon Alexa[®] compatibility
- 7-in. TFT Multi-Information Display (MID) with customizable settings
- Qi-compatible wireless smartphone charging²⁸
- Leather-trimmed multi-stage heated front seats with seatback pockets; 8-way power-adjustable driver's seat with power lumbar support; 8-way power-adjustable front passenger seat
- Rear adjustable headrests
- 3-mode switch (ECO, Normal, Sport)
- Textured metal interior trim
- Smart Key System³⁸ on front doors and trunk with Push Button Start
- Auto-dimming rearview mirror
- HomeLink[®] universal transceiver
- Ambient interior lighting
- Electric Parking Brake (EPB)⁴¹ with Brake Hold⁴²

Options and Packages

- Panoramic glass roof with front power tilt/slide moonroof
- Two-tone Midnight Black Metallic roof and rear spoiler²
- Navigation Upgrade Package²³ includes
 - Premium Audio with JBL[®] w/Clari-Fi[®] and Dynamic Navigation²³
- Driver Assist Package includes
 - 10-in. color Head-Up Display (HUD)
 - Bird's Eye View Camera³⁶ with Perimeter Scan
 - Intelligent Clearance Sonar (ICS)⁵¹ with Rear Cross-Traffic Braking (RCTB)⁵²
 - Multi-stage ventilated front seats



XSE V6

Adds to or replaces features offered on XSE

Powertrain

- 3.5-Liter V6 with 301 hp @ 6600 rpm
- 22 city/32 hwy/26 combined est. mpg⁵⁸
- Direct Shift-8AT (8-Speed Electronically Controlled automatic Transmission)

Exterior Features

- Panoramic glass roof with front power tilt/slide moonroof

Interior and Safety Features

- Audio Plus with JBL[®] w/Clari-Fi[®] — includes nine speakers including subwoofer and amplifier, 8-in. touch-screen, AM/FM/HD RadioTM CD player, USB media port,⁷ two USB charge ports,⁷ advanced voice recognition,⁸ hands-free phone capability and music streaming⁹ via Bluetooth[®] wireless technology, Android AutoTM & Apple CarPlay[®] & Amazon Alexa[®] compatible, SiriusXM[®] with 3-month All Access trial¹¹ Connected Services¹² — Safety Connect[®] with 1-year trial,¹⁴ Service Connect[®] with 10-year trial,¹⁹ Remote Connect[®] with 1-year trial,²¹ Wi-Fi Connect[®] with up to 2 GB within 3-month trial.¹⁶ See toyota.com/audio-multimedia for details.
- 10-in. color Head-Up Display (HUD) with customizable settings, speedometer, shift position, TSS-P³⁵ indicators, audio, phone, outside temperature and adjustable brightness
- Overhead console with maplights and HomeLink[®] universal transceiver (sunglasses storage not available with panoramic roof)
- Dual sun visors with sliding extensions and illuminated vanity mirrors

Options and Packages

- Two-tone Midnight Black Metallic roof and rear spoiler²
- Navigation Upgrade Package²³ includes
 - Premium Audio with Dynamic Navigation²³ and JBL[®] w/Clari-Fi[®]
- Driver Assist Package includes
 - Bird's Eye View Camera³⁶ with Perimeter Scan
 - Intelligent Clearance Sonar (ICS)⁵¹ with Rear Cross-Traffic Braking (RCTB)⁵²
 - Multi-stage ventilated front seats

See numbered footnotes in Disclosures section.



Hybrid LE

Powertrain

- Hybrid: 2.5-Liter Dynamic Force 4-Cylinder Engine
- Hybrid system net power: 208 hp (155 kW)
- 51 city/53 hwy/52 combined est. mpg⁶⁶
- Electronically controlled Continuously Variable Transmission (ECVT)

Exterior Features

- Bi-LED combination headlights with auto on/off feature
- LED Daytime Running Lights (DRL) with on/off feature
- Dark gray front grille
- 16-in. steel wheels and P205/65R16 tires
- Acoustic noise-reducing front windshield
- Shark-fin antenna

Interior and Safety Features

- Toyota Safety Sense™ P (TSS-P)³⁵
- Dual zone automatic climate control with air filter, electric compressor and humidity sensor
- Audio — includes 7-in. touch-screen with Android Auto™⁴⁴ & Apple CarPlay⁴⁵ & Amazon Alexa⁴⁶ compatibility
- Integrated backup camera²⁹ with projected path
- 4.2-in. TFT Multi-Information Display (MID)
- Three USB ports⁷ (one 1.5V and two 2.1V)
- Fabric-trimmed front seats with passenger-side seatback pocket; 8-way power-adjustable driver's seat with power lumbar support; 6-way adjustable front passenger seat
- 60/40 split fold-down rear seat with center armrest with cup holders
- Tilt/telescopic 3-spoke steering wheel with audio, Multi-Information Display (MID) and Bluetooth⁴⁹ hands-free phone controls
- 4-mode switch (EV,³⁴ ECO, Normal and Sport)
- Layered wood interior trim
- Smart Key System³⁸ on front doors and trunk with Push Button Start
- Power windows with 4-window auto up/down, jam protection and retained-power features
- Power door locks with automatic locking feature
- Electric Parking Brake (EPB)⁴¹ with Brake Hold⁴²
- Ten airbags⁴⁶
- Hill Start Assist Control (HAC)⁵³

Options and Packages

- Power tilt/slide moonroof
- Convenience Package includes
 - HomeLink⁴³ universal transceiver
 - Auto-dimming rearview mirror
- Audio Upgrade Package includes
 - Audio Plus with 8-in. touch-screen
 - Qi-compatible wireless smartphone charging²⁸
- Blind Spot Monitor (BSM)³ with Rear Cross-Traffic Alert (RCTA)⁵⁰



Hybrid SE

Adds to or replaces features offered on Hybrid LE

Powertrain

- Hybrid: 2.5-Liter Dynamic Force 4-Cylinder Engine
- Hybrid system net power: 208 hp (155 kW)
- 44 city/47 hwy/46 combined est. mpg⁵⁸
- Electronically controlled Continuously Variable Transmission (ECVT)

Exterior Features

- Black front grille with sport mesh insert
- Color-keyed sport side rocker panels
- 18-in. black machined-finish alloy wheels and P235/45R18 tires
- Color-keyed rear spoiler
- Single exhaust with dual chrome tips

Interior and Safety Features

- Sport SofTex[®]-trimmed³¹ front seats with fabric inserts, seatback pockets; 8-way power-adjustable driver's seat with power lumbar support; 6-way adjustable front passenger seat
- Leather-trimmed tilt/telescopic 3-spoke steering wheel with paddle shifters, audio, Multi-Information Display (MID) and Bluetooth⁴⁹ hands-free phone controls
- Embossed mesh interior trim

Options and Packages

- Power tilt/slide moonroof
- Convenience Package includes
 - HomeLink⁴³ universal transceiver
 - Auto-dimming rearview mirror
- Audio Upgrade Package includes
 - Audio Plus with 8-in. touch-screen
 - Qi-compatible wireless smartphone charging²⁸
- Blind Spot Monitor (BSM)³ with Rear Cross-Traffic Alert (RCTA)⁵⁰



Hybrid XLE

Adds to or replaces features offered on Hybrid LE

Powertrain

- Hybrid: 2.5-Liter Dynamic Force 4-Cylinder Engine
- Hybrid system net power: 208 hp (155 kW)
- 44 city/47 hwy/46 combined est. mpg⁵⁸
- Electronically controlled Continuously Variable Transmission (ECVT)

Exterior Features

- LED headlights with fully integrated LED Daytime Running Lights (DRL) with auto on/off feature
- LED taillights
- Bright metallic front grille
- Color-keyed heated power outside mirrors with turn signal and blind spot warning indicators³
- 18-in. silver machined-finish alloy wheels and P235/45R18 tires
- Single exhaust with chrome finisher

Interior and Safety Features

- Blind Spot Monitor (BSM)³ with Rear Cross-Traffic Alert (RCTA)⁵⁰
- Dual zone automatic climate control with air filter, electric compressor, humidity sensor and rear-seat vents
- Integrated backup camera²⁹ with dynamic gridlines
- Audio Plus — includes 8-in. touch-screen with Android Auto™⁴⁴ & Apple CarPlay⁴⁵ & Amazon Alexa⁴⁶ compatibility
- 7-in. TFT Multi-Information Display (MID) with customizable settings
- Qi-compatible wireless smartphone charging²⁸
- Leather-trimmed multi-stage heated front seats with seatback pockets; 8-way power-adjustable driver's seat with power lumbar support; 8-way power-adjustable front passenger seat
- Leather-trimmed tilt/telescopic 3-spoke steering wheel with audio, Multi-Information Display (MID) and Bluetooth⁴⁹ hands-free phone controls
- Tiger Eye wood interior trim
- Auto-dimming rearview mirror
- Ambient interior lighting
- Three USB ports⁷ (one 1.5V and two 2.1V)

Options and Packages

- Power tilt/slide moonroof
- Navigation Upgrade Package²³ includes
 - Premium Audio with JBL[®] w/Clari-Fi^{®22} and Dynamic Navigation²³
- Driver Assist Package includes
 - 10-in. color Head-Up Display (HUD)
 - Bird's Eye View Camera³⁶ with Perimeter Scan
 - Intelligent Clearance Sonar (ICS)⁵¹ with Rear Cross-Traffic Braking (RCTB)⁵²
 - Multi-stage ventilated front seats
- Adaptive Headlights



TRD

Adds to or replaces features offered on SE

Powertrain

- 3.5-Liter V6 with 301 hp @ 6600 rpm
- 22 city/31 hwy/25 combined est. mpg⁵⁸
- Direct Shift-8AT (8-Speed Electronically Controlled automatic Transmission)

Exterior Features

- Black-housing Bi-LED combination headlights with auto on/off feature
- Gloss-black front grille with sport mesh insert
- Black-painted power outside mirrors and window trim
- 19-in. x 8.5-in. TRD matte-black alloy wheels with P235/40R19 tires
- TRD gloss-black pedestal rear spoiler
- TRD gloss-black front splitter, side aero skirts, and rear diffuser with red pinstriping
- TRD cat-back dual exhaust with polished stainless steel tips
- Red TRD badge

Interior and Safety Features

- TRD instrumentation with red-illuminated accents and TRD start-up animation
- Sport SofTex[®]-trimmed³¹ front seats with red seatbelts, stitching and fabric inserts, red stitched TRD headrest logo, seatback pockets; 8-way power-adjustable driver's seat with power lumbar support; 6-way adjustable front passenger seat
- Leather-trimmed tilt/telescopic 3-spoke steering wheel with red stitching, paddle shifters, audio, Multi-Information Display (MID) and Bluetooth^{®9} hands-free phone controls
- Black leather shift knob with red stitching and debossed TRD logo
- Aluminum sport pedals, TRD floor and trunk mats³⁷
- Smart Key System³⁸ on front doors and trunk with Push Button Start, remote keyless entry system and remote illuminated entry

Options

- Two-tone Midnight Black Metallic roof²
- TRD all-season tires⁵⁶
- TRD summer tires^{56,57}

CAMRY SPECIAL EDITION



SE Nightshade Edition

Adds to or replaces features offered on SE

Powertrain

- 2.5-Liter Dynamic Force 4-Cylinder Engine with 203 hp @ 6600 rpm
- 28 city/39 hwy/32 combined est. mpg⁵⁸
- Direct Shift-8AT (8-Speed Electronically Controlled automatic Transmission)

Exterior Features

- Black-painted power outside door handles, side mirrors and window trim
- 18-in. black-painted alloy wheels with P235/45R18 tires
- Black-painted rear spoiler
- Black-painted shark fin antenna
- Black rear Toyota emblem and "CAMRY" lettering
- Black SE grade badge

COLOR*

Color



Midnight Black Metallic



Blue Streak Metallic



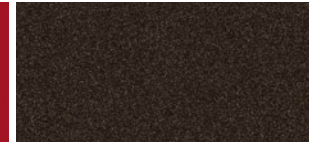
Galactic Aqua Mica



Ruby Flare Pearl²



Supersonic Red²



Brownstone



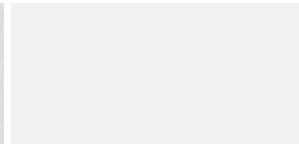
Predawn Gray Mica



Celestial Silver Metallic



Wind Chill Pearl²



Super White

Available Midnight Black Metallic roof and rear spoiler²



Blue Streak Metallic²



Celestial Silver Metallic²



Wind Chill Pearl²

Available Midnight Black Metallic roof² for TRD models



Supersonic Red²



Celestial Silver Metallic²



Wind Chill Pearl²

See numbered footnotes in Disclosures section. *Not all colors and trims available on all model grades. See dealer for details.

Trim

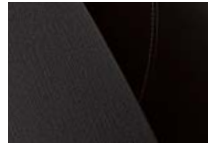


L fabric shown in Ash

Also available in



LE and Hybrid LE fabric shown in Ash



Black



Macadamia

Also available in



XLE, XLE V6 and Hybrid XLE leather trim shown in Ash

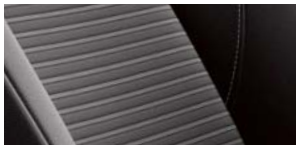


Black

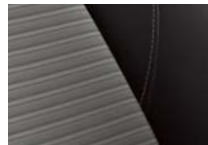


Macadamia

Also available in



SE, SE Nightshade Edition and Hybrid SE SofTex^{®31} trim shown in Black

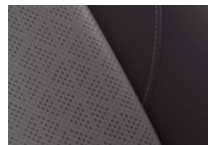


Ash

Also available in



XSE and XSE V6 leather trim shown in Black



Ash



Cockpit Red



TRD SofTex^{®31} trim shown in Black

Wheels



L and Hybrid LE 16-in. steel wheel



XLE, XLE V6 and Hybrid XLE 18-in. silver machined-finish alloy wheel



LE 17-in. alloy wheel



XSE and XSE V6 19-in. black machined-finish alloy wheel



SE and Hybrid SE 18-in. black machined-finish alloy wheel



SE Nightshade Edition 18-in. black-painted alloy wheel



TRD 19-in. matte-black alloy wheel

ACCESSORIES

The 2020 Camry is one bold choice for the road, and it deserves some bold accessories. This is a great way to add extra personality to your Camry. Not every accessory is available in your area, so for a complete list of accessories, go to toyota.com/camry.

All-weather floor liners³⁷
Cargo tote⁶⁷
Cargo tray⁶⁷
Carpet floor mats³⁷
Carpet trunk mat
Coin holder/ashtray cup

Color-keyed rear spoiler
Door edge guards
Doorsill protectors
Emergency assistance kit
First aid kit
Hideaway cargo net⁶⁷

Illuminated doorsills
Lower rocker appliqué
Mudguards
Paint protection film⁶⁸
Rear bumper appliqué (Clear on LE/XLE;
Black on SE/XSE)
Rear spoiler

TRD 19-in. alloy wheels
TRD carpet floor mats³⁷
TRD carpet trunk mats
TRD shift knob
Universal tablet holder⁶⁹



TRD 19-in. alloy wheels



TRD shift knob



TRD carpet floor mats³⁷



TRD trunk mat



Door edge guards



Rear bumper appliqué (Clear)



All-weather floor liners³⁷



Cargo tray⁶⁷

WARRANTIES

Every Toyota Car, Truck and SUV is built to exceptional standards. And that's not idle boasting. We back it up with these Limited Warranty Coverages:

Basic: 36 months/36,000 miles (all components other than normal wear and maintenance items).

Hybrid-Related Component Coverage: Hybrid-related components, including the battery control module, hybrid control module and inverter with converter, are covered for 8 years/100,000 miles. Refer to applicable *Warranty and Maintenance Guide* for details.

Hybrid Battery: HV battery is covered for 10 years or 150,000 miles, whichever comes first. Warranty coverage is subject to terms and conditions. Refer to applicable *Warranty and Maintenance Guide* for details.

Powertrain: 60 months/60,000 miles (engine, transmission/transaxle, drive system, seatbelts and airbags).

Rust-Through: 60 months/unlimited miles (corrosion perforation of sheet metal).

Emissions: Coverages vary under Federal and California regulations. Refer to applicable *Warranty and Maintenance Guide* for details.

Accessories: For Genuine Toyota Accessories purchased at the time of the new vehicle purchase, the Toyota Accessory Warranty coverage is in effect for 36 months/36,000 miles from the vehicle's in-service date, which is the same coverage as the Toyota New Vehicle Limited Warranty.

For Genuine Toyota Accessories purchased after the new vehicle purchase the coverage is 12 months, regardless of mileage, from the date the accessory was installed on the vehicle, or the remainder of any applicable new vehicle warranty, whichever provides greater coverage.

You may be eligible for transportation assistance if it's necessary that your vehicle be kept overnight for repairs covered under warranty. Please see your authorized Toyota dealership for further details.

For complete details about Toyota's warranties, please visit www.toyota.com, refer to the applicable *Warranty and Maintenance Guide* or see your Toyota dealer.

FEATURES¹

	L	LE	XLE	XLE V6	SE	SE NIGHTSHADE EDITION	XSE	XSE V6	TRD	LE	HYBRID SE	XLE
EXTERIOR												
LED headlights with fully integrated LED Daytime Running Lights (DRL) with auto on/off feature	–	–	S	S	–	–	S	S	–	–	–	S
Bi-LED combination headlights with auto on/off feature	S	S	–	–	S	S	–	–	–	S	S	–
Black-housing Bi-LED combination headlights with auto on/off feature	–	–	–	–	–	–	–	–	S	–	–	–
LED Daytime Running Lights (DRL) with on/off feature	S	S	S	S	S	S	S	S	S	S	S	S
LED combination taillights	S	S	–	–	S	S	–	–	S	S	S	–
LED taillights	–	–	S	S	–	–	S	S	–	–	–	S
LED headlights with level control and auto on/off feature	–	–	–	–	–	–	–	–	–	–	–	O
Dark gray front grille	S	S	–	–	–	–	–	–	–	S	–	–
Black front grille with sport mesh insert	–	–	–	–	S	S	–	–	–	–	S	–
Bright metallic front grille	–	–	S	S	–	–	–	–	–	–	–	S
Gloss black front grille with sport mesh insert	–	–	–	–	–	–	S	S	S	–	–	–
Color-keyed sport side rocker panels	–	–	–	–	S	S	S	S	S	–	S	–
Two-tone Midnight Black Metallic roof and rear spoiler ²	–	–	–	–	–	–	O	O	–	–	–	–
Two-tone Midnight Black Metallic roof	–	–	–	–	–	–	–	–	O	–	–	–
Color-keyed power outside mirrors	S	S	–	–	S	–	–	–	–	S	S	–
Black-painted power outside mirrors and window trim	–	–	–	–	–	–	–	–	S	–	–	–
Black painted power outside door handles, side mirrors and window trim	–	–	–	–	–	S	–	–	–	–	–	–
Color-keyed heated power outside mirrors with turn signal and blind spot warning indicators ³	–	P	S	S	P	–	S	S	–	P	P	S
Color-keyed outside door handles	S	S	–	–	S	–	–	–	–	–	–	–
Color-keyed outside door handles with touch-sensor lock/unlock feature	–	P	S	S	P	–	S	S	S	S	S	S
Power tilt/slide moonroof	–	O	–	–	O	–	–	–	–	O	O	O
Panoramic glass roof with front power tilt/slide moonroof	–	–	O	S	–	–	O	S	–	–	–	–
19-in. x 8.5-in. TRD matte-black alloy wheels with P235/40R19 tires	–	–	–	–	–	–	–	–	S	–	–	–
19-in. black machined-finish alloy wheels with P235/40R19 tires	–	–	–	–	–	–	S	S	–	–	–	–
18-in. black-painted alloy wheels with P235/45R18 tires	–	–	–	–	–	S	–	–	–	–	–	–
18-in. silver machined-finish alloy wheels with P235/45R18 tires	–	–	S	S	–	–	–	–	–	–	–	S
18-in. black machined-finish alloy wheels with P235/45R18 tires	–	–	–	–	S	–	–	–	–	–	S	–
17-in. alloy wheels with P215/55R17 tires	–	S	–	–	–	–	–	–	–	–	–	–
16-in. steel wheels with P205/65R16 tires	S	–	–	–	–	–	–	–	–	S	–	–
Matte-black center cap with red TRD logo	–	–	–	–	–	–	–	–	S	–	–	–
Washer-linked intermittent windshield wipers	S	S	S	S	S	S	S	S	S	S	S	S
High Solar Energy-Absorbing (HSEA) glass	S	S	S	S	S	S	S	S	S	S	S	S
Acoustic noise-reducing front windshield	S	S	S	S	S	S	S	S	S	S	S	S
Color-keyed rear spoiler	–	–	–	–	S	–	S	S	–	–	S	–
Black-painted rear spoiler	–	–	–	–	–	S	–	–	–	–	–	–
TRD gloss-black pedestal rear spoiler	–	–	–	–	–	–	–	–	S	–	–	–
TRD gloss-black front splitter, side aero skirts, and rear diffuser with red pinstriping	–	–	–	–	–	–	–	–	S	–	–	–
TRD cat-back dual exhaust with polished stainless steel tips	–	–	–	–	–	–	–	–	S	–	–	–
Dual exhaust with quad chrome tips	–	–	–	–	–	–	S	S	–	–	–	–
Dual exhaust with chrome finisher	–	–	–	S	–	–	–	–	–	–	–	–
Single exhaust	S	S	–	–	–	–	–	–	–	S	–	–
Single exhaust with chrome finisher	–	–	S	–	–	–	–	–	–	–	–	S
Single exhaust with dual chrome tips	–	–	–	–	S	S	–	–	–	–	S	–
In-glass AM/FM antenna	S	S	S	S	S	S	S	S	–	S	S	S
Shark-fin antenna	S	S	S	S	S	–	S	S	S	S	S	S
Black-painted shark-fin antenna	–	–	–	–	–	S	–	–	–	–	–	–
Black SE grade badge	–	–	–	–	–	S	–	–	–	–	–	–
Black rear “Toyota” emblem and “CAMRY” lettering	–	–	–	–	–	S	–	–	S	–	–	–
Red TRD badge	–	–	–	–	–	–	–	–	S	–	–	–

S = Standard O = Optional – = Not available P = Feature is available as part of an option package.

FEATURES (continued)¹

	L	LE	XLE	XLE V6	SE	SE NIGHTSHADE EDITION	XSE	XSE V6	TRD	LE	HYBRID SE	XLE
INTERIOR												
Front air conditioning with air filter	S	S	–	–	–	–	–	–	–	–	–	–
Single-zone automatic climate control with air filter	–	–	–	–	S	S	–	–	S	–	–	–
Dual zone automatic climate control with air filter and rear-seat vents	–	P	S	S	P	–	S	S	–	–	–	–
Dual zone automatic climate control with air filter, electric compressor and humidity sensor	–	–	–	–	–	–	–	–	–	S	S	–
Dual zone automatic climate control with air filter, electric compressor, humidity sensor and rear-seat vents	–	–	–	–	–	–	–	–	–	–	–	S
Audio — includes six speakers, 7-in. touch-screen, AM/FM, Android Auto™ ⁴ & Apple CarPlay ⁵ & Amazon Alexa ⁶ compatible, USB media port, ⁷ hands-free phone capability, advanced voice recognition ⁸ and music streaming ⁹ via Bluetooth ⁹ wireless technology, SiriusXM ¹⁰ with 3-month All Access trial ¹¹ Connected Services ¹² — Safety Connect ¹³ with 1-year trial, ¹⁴ Wi-Fi Connect ¹⁵ with up to 2 GB within 3-month trial ¹⁶ See toyota.com/audio-multimedia for details.	S	–	–	–	–	–	–	–	–	–	–	–
Audio — includes six speakers, 7-in. touch-screen, AM/FM, Android Auto™ ⁴ & Apple CarPlay ⁵ & Amazon Alexa ⁶ compatible, USB media port, ⁷ two USB charge ports, ⁷ hands-free phone capability, advanced voice recognition ⁸ and music streaming ⁹ via Bluetooth ⁹ wireless technology, SiriusXM ¹⁰ with 3-month All Access trial ¹¹ Connected Services ¹² — Safety Connect ¹³ with 1-year trial, ¹⁴ Wi-Fi Connect ¹⁵ with up to 2 GB within 3-month trial ¹⁶ See toyota.com/audio-multimedia for details.	–	S	–	–	S	S	–	–	S	S	S	–
Audio Plus — includes six speakers, 8-in. touch-screen, AM/FM/HD Radio, ⁷ CD Player, USB media port, ⁷ two USB charge ports, ⁷ advanced voice recognition ⁸ hands-free phone capability and music streaming ⁹ via Bluetooth ⁹ wireless technology, Android Auto™ ⁴ & Apple CarPlay ⁵ & Amazon Alexa ⁶ compatible, SiriusXM ¹⁰ with 3-month All Access trial, ¹¹ Connected Services ¹² — Safety Connect ¹³ with 1-year trial, ¹⁴ Service Connect ¹⁸ with 10-year trial, ¹⁹ Remote Connect ²⁰ with 1-year trial, ²¹ Wi-Fi Connect ¹⁵ with up to 2 GB within 3-month trial ¹⁶ See toyota.com/audio-multimedia for details.	–	O	S	–	O	–	S	–	–	O	O	S
Audio Plus with JBL® w/Clari-Fi™ ²² — includes nine speakers including subwoofer and amplifier, 8-in. touch-screen, AM/FM/HD Radio, ⁷ CD Player, USB media port, ⁷ two USB charge ports, ⁷ advanced voice recognition ⁸ hands-free phone capability and music streaming ⁹ via Bluetooth ⁹ wireless technology, Android Auto™ ⁴ & Apple CarPlay ⁵ & Amazon Alexa ⁶ compatible, SiriusXM ¹⁰ with 3-month All Access trial, ¹¹ Connected Services ¹² — Safety Connect ¹³ with 1-year trial, ¹⁴ Service Connect ¹⁸ with 10-year trial, ¹⁹ Remote Connect ²⁰ with 1-year trial, ²¹ Wi-Fi Connect ¹⁵ with up to 2 GB within 3-month trial ¹⁶ See toyota.com/audio-multimedia for details.	–	–	–	S	–	–	–	S	–	–	–	–
Premium Audio with Dynamic Navigation ²³ and JBL® w/Clari-Fi™ ²² — includes nine speakers including subwoofer and amplifier, 8-in. touch-screen, AM/FM/HD Radio, ⁷ CD player, USB media port, ⁷ two USB charge ports, ⁷ Dynamic Navigation ²³ with up to 3-year trial, ²⁴ Dynamic POI Search, Dynamic Voice Recognition, ²⁵ hands-free phone capability and music streaming ⁹ via Bluetooth ⁹ wireless technology, Android Auto™ ⁴ & Apple CarPlay ⁵ & Amazon Alexa ⁶ compatible, SiriusXM ¹⁰ with 3-month All Access trial, ¹¹ Connected Services ¹² — Safety Connect ¹³ with 1-year trial, ¹⁴ Service Connect ¹⁸ with 10-year trial, ¹⁹ Remote Connect ²⁰ with 1-year trial, ²¹ Wi-Fi Connect ¹⁵ with up to 2 GB within 3-month trial ¹⁶ Destination Assist ²⁶ with 1-year trial. ²⁷ See toyota.com/audio-multimedia for details.	–	–	O	O	–	–	O	O	–	–	–	O
Toyota+Alexa app ²⁰	S	S	S	S	S	S	S	S	S	S	S	S
Remote Connect: ²⁰ Toyota Skill	–	P	S	S	P	–	S	S	–	P	P	S
Qi-compatible wireless smartphone charging ²⁸	–	P	S	S	P	–	S	S	–	P	P	S
Integrated backup camera ²⁹ with projected path	S	S	–	–	S	S	–	–	S	S	S	–
Integrated backup camera ²⁹ with dynamic gridlines	–	P	S	S	P	–	S	S	–	P	P	S
4.2-in. TFT Multi-Information Display (MID) with odometer, outside temperature, fuel economy and trip information, current/average fuel economy, distance to empty, average speed, trip distance with timer, and warning messages	S	S	–	–	–	–	–	–	–	–	–	–
4.2-in. TFT Multi-Information Display (MID) with odometer, outside temperature, fuel economy and trip information, current/average fuel economy, distance to empty, average speed, trip distance with timer, TPMS ³⁰ and warning messages	–	–	–	–	S	S	–	–	–	–	–	–
4.2-in. TFT Multi-Information Display with TRD start-up animation, odometer, outside temperature, fuel economy and trip information, current/average fuel economy, distance to empty, average speed, trip distance with timer, TPMS ³⁰ and warning messages	–	–	–	–	–	–	–	–	S	–	–	–
TRD instrumentation with red-illuminated accents	–	–	–	–	–	–	–	–	S	–	–	–
4.2-in. TFT Multi-Information Display (MID) with odometer, outside temperature, fuel economy and trip information, current/average fuel economy, distance to empty, average speed, trip distance with timer, hybrid system information, energy monitor, and warning messages	–	–	–	–	–	–	–	–	–	S	–	–
4.2-in. TFT Multi-Information Display (MID) with odometer, outside temperature, fuel economy and trip information, current/average fuel economy, distance to empty, average speed, trip distance with timer, hybrid system information, energy monitor, TPMS ³⁰ and warning messages	–	–	–	–	–	–	–	–	–	–	S	–

S = Standard O = Optional – = Not available P = Feature is available as part of an option package.

FEATURES (continued)¹

INTERIOR (continued)	L	LE	XLE	XLE V6	SE	SE NIGHTSHADE EDITION	XSE	XSE V6	TRD	LE	HYBRID SE	XLE
7-in. TFT Multi-Information Display (MID) with customizable settings, odometer, outside temperature, fuel economy and trip information, current/average fuel economy, distance to empty, average speed, trip distance with timer, TPMS ³⁰ scheduled maintenance, and warning messages	-	-	S	S	-	-	S	S	-	-	-	-
7-in. TFT Multi-Information Display (MID) with customizable settings, odometer, outside temperature, fuel economy and trip information, current/average fuel economy, distance to empty, average speed, trip distance with timer, TPMS ³⁰ scheduled maintenance, compass, and warning messages	-	-	O	O	-	-	O	O	-	-	-	-
7-in. TFT Multi-Information Display (MID) with customizable settings, odometer, outside temperature, fuel economy and trip information, current/average fuel economy, distance to empty, average speed, hybrid system information, energy monitor, TPMS ³⁰ scheduled maintenance, and warning messages	-	-	-	-	-	-	-	-	-	-	-	S
7-in. TFT Multi-Information Display (MID) with customizable settings, odometer, outside temperature, fuel economy and trip information, current/average fuel economy, distance to empty, average speed, hybrid system information, energy monitor, TPMS ³⁰ scheduled maintenance, compass, and warning messages	-	-	-	-	-	-	-	-	-	-	-	O
Fabric-trimmed front seats with passenger-side seatback pocket; 6-way adjustable driver's and front passenger seats	S	-	-	-	-	-	-	-	-	-	-	-
Fabric-trimmed front seats with passenger-side seatback pocket; 8-way power-adjustable driver's seat with power lumbar support; 6-way adjustable front passenger seat	-	S	-	-	-	-	-	-	-	S	-	-
Sport SofTex [®] -trimmed ³¹ front seats with fabric inserts, seatback pockets; 8-way power-adjustable driver's seat with power lumbar support; 6-way adjustable front passenger seat	-	-	-	-	S	S	-	-	-	-	S	-
Sport SofTex [®] -trimmed ³¹ front seats with red seat belts, stitching and fabric inserts, red-stitched TRD headrest logo, seatback pockets; 8-way power-adjustable driver's seat with power lumbar support; 6-way adjustable front passenger seat	-	-	-	-	-	-	-	-	S	-	-	-
Leather-trimmed multi-stage heated front seats with seatback pockets; 8-way power-adjustable driver's seat with power lumbar support; 8-way power-adjustable front passenger seat	-	-	S	S	-	-	S	S	-	-	-	S
Leather-trimmed multi-stage heated and ventilated front seats with seatback pockets; 8-way power-adjustable driver's seat with power lumbar support; 8-way power-adjustable front passenger seat	-	-	P	P	-	-	P	P	-	-	-	P
Fixed rear seat	S	-	-	-	-	-	-	-	S	-	-	-
Rear adjustable headrests	-	-	S	S	-	-	S	S	-	-	-	S
60/40 split fold-down rear seat with center armrest with cup holders	-	S	S	S	S	S	S	S	-	S	S	S
Full-Speed Range Dynamic Radar Cruise Control (DRCC) ³²	-	-	S	S	-	-	S	S	S	S	S	S
Dynamic Radar Cruise Control (DRCC) ³³	S	S	-	-	S	S	-	-	-	-	-	-
Tilt/telescopic 3-spoke steering wheel with audio, Multi-Information Display (MID) and Bluetooth ^{®99} hands-free phone, voice-command, Dynamic Radar Cruise Control (DRCC), ³² conventional cruise control and Lane Departure Alert (LDA) ³³ controls	S	S	-	-	-	-	-	-	-	-	-	-
Tilt/telescopic 3-spoke steering wheel with audio, Multi-Information Display (MID) and Bluetooth ^{®99} hands-free phone, voice-command, Full-Speed Range Dynamic Radar Cruise Control (DRCC), ³² conventional cruise control and Lane Departure Alert (LDA) ³³ controls	-	-	-	-	-	-	-	-	-	S	-	-
Leather-trimmed tilt/telescopic 3-spoke steering wheel with audio, Multi-Information Display (MID), Bluetooth ^{®99} hands-free phone, voice-command, Full-Speed Dynamic Radar Cruise Control (DRCC), ³² conventional cruise control and Lane Departure Alert (LDA) ³³ controls	-	-	S	S	-	-	-	-	-	-	-	S
Leather-trimmed tilt/telescopic 3-spoke steering wheel with paddle shifters, audio, Multi-Information Display (MID), Bluetooth ^{®99} hands-free phone, voice-command, Dynamic Radar Cruise Control (DRCC), ³² conventional cruise control and Lane Departure Alert (LDA) ³³ controls	-	-	-	-	S	S	-	-	-	-	-	-
Leather-trimmed tilt/telescopic 3-spoke steering wheel with red stitching, paddle shifters, audio, Multi-Information Display (MID), Bluetooth ^{®99} hands-free phone, voice-command, Full-Speed Range Dynamic Radar Cruise Control (DRCC), ³² conventional cruise control and Lane Departure Alert (LDA) ³³ controls	-	-	-	-	-	-	-	-	S	-	-	-
Leather-trimmed tilt/telescopic 3-spoke steering wheel with paddle shifters, audio, Multi-Information Display (MID), Bluetooth ^{®99} hands-free phone, voice-command, Full-Speed Range Dynamic Radar Cruise Control (DRCC), ³² conventional cruise control and Lane Departure Alert (LDA) ³³ controls	-	-	-	-	-	-	S	S	-	-	S	-
3-mode switch (ECO, Normal, Sport)	-	-	S	S	-	-	S	S	S	-	-	-
4-mode switch (EV, ³⁴ ECO, Normal, Sport)	-	-	-	-	-	-	-	-	-	S	S	S
10-in. color Head-Up Display (HUD) with customizable settings, speedometer, shift position, TSS-P ³⁵ indicators, audio, phone, outside temperature and adjustable brightness	-	-	-	S	-	-	-	S	-	-	-	-
10-in. color Head-Up Display (HUD) with customizable settings, speedometer, navigation, shift position, compass, TSS-P ³⁵ indicators, audio, phone, outside temperature and adjustable brightness	-	-	P	P	-	-	P	P	-	-	-	-
10-in. color Head-Up Display (HUD) with customizable settings, speedometer, navigation, shift position, compass, TSS-P ³⁵ indicators, audio, phone, outside temperature, Hybrid System Indicator and adjustable brightness	-	-	-	-	-	-	-	-	-	-	-	P

S = Standard O = Optional - = Not available P = Feature is available as part of an option package.

FEATURES (continued)¹

	L	LE	XLE	XLE V6	SE	SE NIGHTSHADE EDITION	XSE	XSE V6	TRD	LE	HYBRID SE	XLE
INTERIOR (continued)												
Bird's Eye View Camera ³⁶ with Perimeter Scan, overhead 360-degree view in Drive and Reverse, and curb view	–	–	P	P	–	–	P	P	–	–	–	P
Soft-material upper door trim	S	S	S	S	S	S	S	S	S	S	S	S
Layered wood interior trim	S	S	–	–	–	–	–	–	–	S	–	–
Embossed mesh interior trim	–	–	–	–	S	S	–	–	–	–	S	–
Tiger Eye wood interior trim	–	–	S	S	–	–	–	–	–	–	–	S
Textured metal interior trim	–	–	–	–	–	–	S	S	S	–	–	–
Red-stitched instrument panel and shift boot	–	–	–	–	–	–	–	–	S	–	–	–
Aluminum sport pedals	–	–	–	–	–	–	–	–	S	–	–	–
Black leather shift knob with red stitching and debossed TRD logo	–	–	–	–	–	–	–	–	S	–	–	–
Black floor mats ³⁷ with red "CAMRY TRD" logo and red outline	–	–	–	–	–	–	–	–	S	–	–	–
Interior chrome door handles	S	S	S	S	S	S	S	S	–	S	S	S
Multi-function in-key remote keyless entry system with lock, two-stage unlock, panic, trunk-release functions and remote illuminated entry	S	S	–	–	S	S	–	–	–	–	–	–
Smart Key System ³⁸ on front doors and trunk with Push Button Start, remote keyless entry system and remote illuminated entry	–	P	S	S	P	–	S	S	S	S	S	S
Power windows with 4-window auto up/down, jam protection and retained-power features	S	S	S	S	S	S	S	S	S	S	S	S
Rear window defogger with timer	S	S	S	S	S	S	S	S	S	S	S	S
Power door locks with shift-linked automatic locking feature with anti-lockout feature	S	S	S	S	S	S	S	S	S	S	S	S
Day/night rearview mirror	S	S	–	–	S	S	–	–	S	S	S	–
Auto-dimming rearview mirror	–	P	S	S	P	–	S	S	–	P	P	S
Overhead console with maplights and sunglasses storage (sunglasses storage not available with moonroof)	S	S	–	–	S	S	–	–	S	S	S	–
Overhead console with maplights, sunglasses storage, and HomeLink ³⁹ universal transceiver (sunglasses storage not available with moonroof or panoramic roof)	–	P	S	–	P	–	S	–	–	P	P	S
Overhead console with maplights and HomeLink ³⁹ universal transceiver (sunglasses storage not available with panoramic roof)	–	–	P	S	–	–	P	S	–	–	–	–
Covered center console, armrest and storage	S	S	S	S	S	S	S	S	S	S	S	S
LED-illuminated glove compartment	S	S	S	S	S	S	S	S	S	S	S	S
One 12V auxiliary power outlet ⁴⁰	S	S	S	S	S	S	S	S	S	S	S	S
One USB port ⁷ (1.5A)	S	–	–	–	–	–	–	–	–	–	–	–
Three USB ports ⁷ (one 1.5A and two 2.1A)	–	S	S	S	S	S	S	S	S	S	S	S
Dual sun visors with sliding extensions	S	S	S	–	S	S	S	–	S	S	S	S
Dual sun visors with sliding extensions and illuminated vanity mirrors	–	P	P	S	P	–	P	S	–	P	P	P
LED rear-seat reading lights	–	P	S	S	P	–	S	S	–	P	P	P
Ambient lighting	–	–	S	S	–	–	S	S	–	–	–	S
Two front cup holders; two front door and two rear bottle holders	S	–	–	–	–	–	–	–	S	–	–	–
Two front and two rear cup holders; two front door and two rear bottle holders	–	S	S	S	S	S	S	S	–	S	S	S
Foot pedal parking brake	S	S	–	–	S	S	–	–	–	–	–	–
Electric Parking Brake (EPB) ⁴¹ with Brake Hold ⁴² function	–	–	S	S	–	–	S	S	S	S	S	S

S = Standard O = Optional – = Not available P = Feature is available as part of an option package.

FEATURES (continued)¹

	L	LE	XLE	XLE V6	SE	SE NIGHTSHADE EDITION	XSE	XSE V6	TRD	LE	HYBRID SE	XLE
SAFETY/CONVENIENCE												
Star ™ Star Safety System™ — includes Enhanced Vehicle Stability Control (VSC) ⁴³ Traction Control (TRAC), 4-wheel Anti-lock Brake System (ABS), Electronic Brake-force Distribution (EBD), Brake Assist (BA) ⁴⁴ and Smart Stop Technology® (SST) ⁴⁵	S	S	S	S	S	S	S	S	S	S	S	S
Ten airbags ⁴⁶ — includes driver and front passenger Advanced Airbag System, driver and front passenger seat-mounted side airbags, driver and front passenger knee airbags, rear seat-mounted side airbags, and front and rear side curtain airbags	S	S	S	S	S	S	S	S	S	S	S	S
Driver and front passenger Whiplash-Injury-Lessening (WIL) ⁴⁷ seats	S	S	S	S	S	S	S	S	S	S	S	S
3-point seatbelts for all seating positions; driver-side Emergency Locking Retractor (ELR) and Automatic/Emergency Locking Retractor (ALR/ELR) on all passenger seatbelts	S	S	S	S	S	S	S	S	S	S	S	S
LATCH (Lower Anchors and Tethers for CHildren) includes lower anchors on outboard rear seats	S	S	S	S	S	S	S	S	S	S	S	S
Child-protector rear door locks and power window lockout control	S	S	S	S	S	S	S	S	S	S	S	S
Energy-absorbing collapsible steering column	S	S	S	S	S	S	S	S	S	S	S	S
Front and rear energy-absorbing crumple zones	S	S	S	S	S	S	S	S	S	S	S	S
Side-impact door beams	S	S	S	S	S	S	S	S	S	S	S	S
Tire Pressure Monitor System (TPMS) ³⁰	S	S	–	–	–	–	–	–	–	S	–	–
Tire Pressure Monitor System (TPMS) ³⁰ with direct pressure readout	–	–	S	S	S	S	S	S	S	–	S	S
Collision sensors: deactivate high-voltage battery	–	–	–	–	–	–	–	–	–	S	S	S
Toyota Safety Sense™ P (TSS-P) ³⁵ — Pre-Collision System with Pedestrian Detection (PCS w/PD) ⁴⁸ Lane Departure Alert with Steering Assist (LDA w/SA), ³³ Automatic High Beams (AHB) ⁴⁹ and Dynamic Radar Cruise Control (DRCC) ³²	S	S	–	–	S	S	–	–	–	–	–	–
Toyota Safety Sense™ P (TSS-P) ³⁵ — Pre-Collision System with Pedestrian Detection (PCS w/PD) ⁴⁸ Lane Departure Alert with Steering Assist (LDA w/SA), ³³ Automatic High Beams (AHB) ⁴⁹ and Full-Speed Range Dynamic Radar Cruise Control (DRCC) ³²	–	–	S	S	–	–	S	S	S	S	S	S
Blind Spot Monitor (BSM) ³ with Rear Cross-Traffic Alert (RCTA) ⁵⁰	–	P	S	S	P	–	S	S	–	P	P	S
Blind Spot Monitor (BSM) ³ with Rear Cross-Traffic Alert (RCTA) ⁵⁰ and Intelligent Clearance Sonar (ICS) ⁵¹ with Rear Cross-Traffic Braking (RCTB) ⁵²	–	–	P	P	–	–	P	P	–	–	–	P
Automatic engine shut off	S	S	S	S	S	S	S	S	S	S	S	S
Hill Start Assist Control (HAC) ³³	S	S	S	S	S	S	S	S	S	S	S	S
Anti-theft system with alarm	–	S	S	S	S	S	S	S	S	S	S	S
Engine immobilizer ⁵⁴	S	–	–	–	–	–	–	–	–	–	–	–
ToyotaCare ⁵⁵ featuring a no cost maintenance plan with Roadside Assistance ⁵⁵	S	S	S	S	S	S	S	S	S	S	S	S
PACKAGES & OPTIONS												
Convenience Package — includes Smart Key System, ³⁸ HomeLink ^{®39} universal transceiver, auto-dimming rearview mirror	–	P	–	–	P	–	–	–	–	–	–	–
Convenience Package (Hybrid) — includes HomeLink ^{®39} universal transceiver, auto-dimming rearview mirror	–	–	–	–	–	–	–	–	–	P	P	–
Audio Upgrade Package — includes Audio Plus, Qi-compatible wireless smartphone charging, ²⁸ dual-zone automatic climate control	–	O	–	–	O	–	–	–	–	–	–	–
Audio Upgrade Package — includes Audio Plus, Qi-compatible wireless smartphone charging ²⁸	–	–	–	–	–	–	–	–	–	O	O	–
Navigation Upgrade Package — includes Premium Audio, Dynamic Navigation ²³ and JBL® w/Clari-Fi ^{®22}	–	–	O	O	–	–	O	O	–	–	–	O
Driver Assist Package												
10-in. color Head-Up Display (HUD)	–	–	P	S	–	–	P	S	–	–	–	P
Bird's Eye View Camera ³⁶ with Perimeter Scan	–	–	P	P	–	–	P	P	–	–	–	P
Intelligent Clearance Sonar (ICS) ⁵¹ with Rear Cross-Traffic Braking (RCTB) ⁵²	–	–	P	P	–	–	P	P	–	–	–	P
Multi-stage ventilated front seats	–	–	P	P	–	–	P	P	–	–	–	P
Power tilt/slide moonroof	–	O	–	–	O	–	–	–	–	O	O	O
Panoramic glass roof with front power tilt/slide moonroof	–	–	O	S	–	–	O	S	–	–	–	–
Blind Spot Monitor (BSM) ³ with Rear Cross-Traffic Alert (RCTA) ⁵⁰	–	O	–	–	O	–	–	–	–	O	O	–
Two-tone Midnight Black Metallic roof and rear spoiler ² (includes black window trim and sideview mirror caps)	–	–	–	–	–	–	O	O	–	–	–	–
Two-tone Midnight Black Metallic roof	–	–	–	–	–	–	–	–	O	–	–	–
Adaptive Headlights — LED headlights with level control and auto on/off feature	–	–	–	–	–	–	–	–	–	–	–	O
All-season tires ⁵⁶	–	–	–	–	–	–	–	–	O	–	–	–
Summer tires ^{56, 57}	–	–	–	–	–	–	–	–	O	–	–	–

S = Standard O = Optional – = Not available P = Feature is available as part of an option package.

SPECIFICATIONS

MECHANICAL/PERFORMANCE	L	LE	XLE	XLE V6	SE	SE NIGHTSHADE EDITION	XSE	XSE V6	TRD	LE	HYBRID SE	XLE	
ENGINE													
2.5-Liter Dynamic Force 4-Cylinder DOHC 16-Valve D-4S Dual Injection with Dual VVT-i; 203 hp @ 6600 rpm; 184 lb.-ft. @ 5000 rpm	Standard	Standard	N/A	N/A	Standard	Standard	N/A	N/A	N/A	N/A	N/A	N/A	
2.5-Liter Dynamic Force 4-Cylinder DOHC 16-Valve D-4S Dual Injection with Dual VVT-i and ECO, Normal and Sport drive modes; 203 hp @ 6800 rpm; 184 lb.-ft. @ 5000 rpm	N/A	N/A	Standard	N/A	N/A	N/A	N/A	N/A	N/A	N/A	N/A	N/A	
2.5-Liter Dynamic Force 4-Cylinder DOHC 16-Valve D-4S Dual Injection with Dual VVT-i and ECO, Normal and Sport drive modes; 206 hp @ 6800 rpm; 186 lb.-ft. @ 5000 rpm	N/A	N/A	N/A	N/A	N/A	N/A	Standard	N/A	N/A	N/A	N/A	N/A	
3.5-Liter V6 DOHC 24-Valve D-4S Dual Injection with Dual VVT-i; 301 hp @ 6600 rpm; 267 lb.-ft. @ 4700 rpm	N/A	N/A	N/A	Standard	N/A	N/A	N/A	Standard	Standard	N/A	N/A	N/A	
Hybrid engine: 2.5-Liter Dynamic Force 4-Cylinder DOHC 16-Valve D-4S Dual Injection with Dual VVT-i with ECO, Normal, Sport and EV ³⁴ drive modes; 176 hp @ 5700 rpm; 163 lb.-ft. @ 5200 rpm	N/A	N/A	N/A	N/A	N/A	N/A	N/A	N/A	N/A	Standard	Standard	Standard	
COMPRESSION RATIO													
	13.0 : 1	13.0 : 1	13.0 : 1	11.8 : 1	13.0 : 1	13.0 : 1	13.0 : 1	11.8 : 1	11.8 : 1	14.0 : 1	14.0 : 1	14.0 : 1	
EMISSION RATING													
Federal Environmental Protection Agency (EPA) Emission Standard: Tier 3 Bin 30	Standard	Standard	Standard	N/A	Standard	Standard	Standard	N/A	N/A	Standard	Standard	Standard	
California Air Resources Board (CARB) Emission Standard: Low Emission Vehicle (LEV) III, Super Ultra Low Emission Vehicle (SULEV) 30	Standard	Standard	Standard	N/A	Standard	Standard	Standard	N/A	N/A	Standard	Standard	Standard	
Federal Environmental Protection Agency (EPA) Emission Standard: Tier 3 Bin 70	N/A	N/A	N/A	Standard	N/A	N/A	N/A	Standard	Standard	N/A	N/A	N/A	
California Air Resources Board (CARB) Emission Standard: Low Emission Vehicle (LEV) III, Ultra Low Emission Vehicle (ULEV) 70	N/A	N/A	N/A	Standard	N/A	N/A	N/A	Standard	Standard	N/A	N/A	N/A	
ELECTRIC MOTOR													
Power output	N/A	N/A	N/A	N/A	N/A	N/A	N/A	N/A	N/A	N/A	118 HP (88 kW)	118 HP (88 kW)	118 HP (88 kW)
Torque	N/A	N/A	N/A	N/A	N/A	N/A	N/A	N/A	N/A	N/A	149 lb.-ft. (202 N-m)	149 lb.-ft. (202 N-m)	149 lb.-ft. (202 N-m)
Voltage	N/A	N/A	N/A	N/A	N/A	N/A	N/A	N/A	N/A	N/A	650 V (max sys.)	650 V (max sys.)	650 V (max sys.)
Hybrid System Net Power	N/A	N/A	N/A	N/A	N/A	N/A	N/A	N/A	N/A	N/A	208 HP	208 HP	208 HP
TRACTION BATTERY													
Sealed Lithium-ion (LI)	N/A	N/A	N/A	N/A	N/A	N/A	N/A	N/A	N/A	N/A	Standard	Standard	Standard
VOLTAGE													
Voltage	N/A	N/A	N/A	N/A	N/A	N/A	N/A	N/A	N/A	N/A	259.0 V	259.0 V	259.0 V
TRANSMISSION													
Direct Shift-8AT 8-speed Electronically Controlled automatic Transmission with intelligence (ECT-I) with sequential shift mode	Standard	Standard	Standard	Standard	Standard	Standard	Standard	Standard	Standard	Standard	N/A	N/A	N/A
Electronically controlled Continuously Variable Transmission (ECVT) with sequential shift mode	N/A	N/A	N/A	N/A	N/A	N/A	N/A	N/A	N/A	N/A	Standard	Standard	Standard
DRIVETRAIN													
Front-wheel drive	Standard	Standard	Standard	Standard	Standard	Standard	Standard	Standard	Standard	Standard	Standard	Standard	Standard
BODY CONSTRUCTION													
Unitized body with front and rear anti-vibration sub-frames	Standard	Standard	Standard	Standard	Standard	Standard	Standard	Standard	Standard	N/A	Standard	Standard	Standard
Increased-thickness underbody braces and added rear seat V-bracing	N/A	N/A	N/A	N/A	N/A	N/A	N/A	N/A	N/A	Standard	N/A	N/A	N/A
SUSPENSION													
Independent MacPherson strut front suspension with gas-filled shock absorbers and stabilizer bar; multi-link rear suspension with gas-filled shock absorbers and stabilizer bar, and front strut tower bracing	Standard	Standard	Standard	Standard	N/A	N/A	N/A	N/A	N/A	N/A	Standard	N/A	Standard

SPECIFICATIONS (continued)

MECHANICAL/PERFORMANCE (continued)

	L	LE	XLE	XLE V6	SE	SE NIGHTSHADE EDITION	XSE	XSE V6	TRD	LE	HYBRID SE	XLE
SUSPENSION (continued)												
Independent MacPherson strut front suspension with gas-filled shock absorbers and stabilizer bar; multi-link rear suspension with gas-filled shock absorbers and stabilizer bar, sport-tuned shock absorbers and springs, and front strut tower bracing	N/A	N/A	N/A	N/A	Standard	Standard	Standard	Standard	N/A	N/A	Standard	N/A
Independent MacPherson strut front suspension; multi-link rear suspension; front strut tower bracing; TRD track-tuned front and rear coil springs, shock absorbers and stabilizer bars	N/A	N/A	N/A	N/A	N/A	N/A	N/A	N/A	Standard	N/A	N/A	N/A
STEERING												
Electric Power Steering (EPS); power-assisted rack-and-pinion	Standard	Standard	Standard	Standard	Standard	Standard	Standard	Standard	Standard	Standard	Standard	Standard
Turning circle diameter, curb to curb (ft.)	37.4	37.4	38.0	38.0	38.0	38.0	38.0	38.0	38.0	37.4	38.0	38.0
BRAKES												
Power-assisted ventilated 12-in. front disc brakes; solid 11.06-in. rear disc brakes with hydraulic brake booster, Electronically Controlled Braking (ECB) system and Star Safety System™	Standard	Standard	Standard	Standard	Standard	Standard	Standard	Standard	N/A	N/A	N/A	N/A
Power-assisted ventilated 12-in. front disc brakes; solid 11.06-in. rear disc brakes with hydraulic brake booster, Electronically Controlled Braking (ECB) system, integrated regenerative braking and Star Safety System™	N/A	N/A	N/A	N/A	N/A	N/A	N/A	N/A	N/A	Standard	Standard	Standard
Power-assisted ventilated 12.9-in. front disc brakes with dual piston calipers; solid 11.06-in. rear disc brakes with hydraulic brake booster; Red painted front and rear calipers; Unique brake booster and pedal stiffness tuning; Electronically Controlled Braking (ECB) system and Star Safety System™	N/A	N/A	N/A	N/A	N/A	N/A	N/A	N/A	Standard	N/A	N/A	N/A
Active Cornering Assist (ACA)	N/A	N/A	N/A	N/A	N/A	N/A	N/A	N/A	Standard	N/A	N/A	N/A
EXTERIOR DIMENSIONS (in.)												
Overall height, unloaded	56.9	56.9	56.9	56.9	56.9	56.9	56.9	56.9	56.3	56.9	56.9	56.9
Overall width	72.4	72.4	72.4	72.4	72.4	72.4	72.4	72.4	73.1	72.4	72.4	72.4
Overall length	192.1	192.1	192.1	192.1	192.7	192.7	192.7	192.7	194.6	192.1	192.7	192.1
Wheelbase	111.2	111.2	111.2	111.2	111.2	111.2	111.2	111.2	111.2	111.2	111.2	111.2
Ground clearance	5.7	5.7	5.7	5.7	5.7	5.7	5.7	5.7	5.7	5.7	5.7	5.7
Track (front/rear)	63.0/63.2	62.6/62.8	62.2/62.6	62.2/62.6	62.2/62.6	62.2/62.6	62.2/62.6	62.6/63.0	62.2/63.0	63.0/63.2	62.2/62.6	62.2/62.6
INTERIOR DIMENSIONS (in.)												
Head room front/rear without moonroof (with moonroof)	38.3/38.0 (N/A)	38.3/38.0 (37.5/38.0)	38.3/38.0 (37.5/38.0)	N/A (37.5/38.0)	38.3/38.0 (37.5/38.0)	38.3/38.0 (37.5/38.0)	38.3/38.0 (37.5/38.0)	N/A (37.5/38.0)	38.3/38.0 (37.5/38.0)	38.3/37.6 (37.5/37.6)	38.3/37.6 (37.5/37.6)	38.3/37.6 (37.5/37.6)
Shoulder room	57.7/55.7	57.7/55.7	57.7/55.7	57.7/55.7	57.7/55.7	57.7/55.7	57.7/55.7	57.7/55.7	57.7/55.7	57.7/55.7	57.7/55.7	57.7/55.7
Hip room	55.4/54.7	55.4/54.7	55.4/54.7	55.4/54.7	55.4/54.7	55.4/54.7	55.4/54.7	55.4/54.7	55.4/54.7	55.4/54.6	55.4/54.6	55.4/54.6
Leg room	42.1/38.0	42.1/38.0	42.1/38.0	42.1/38.0	42.1/38.0	42.1/38.0	42.1/38.0	42.1/38.0	42.1/38.0	42.1/38.0	42.1/38.0	42.1/38.0
WEIGHTS AND CAPACITIES												
Curb weight (lb.)	3241	3296	3351	3549	3340	3340	3395	3572	3572	3472	3549	3572
EPA passenger volume (cu. ft.) without moonroof	100.4	100.4	100.4	N/A	100.4	100.4	100.4	N/A	100.4	99.9	99.9	99.9
EPA passenger volume (cu. ft.) with moonroof	N/A	99.3	99.3	99.3	99.3	99.3	99.3	99.3	N/A	98.8	98.8	98.8
Cargo volume, ⁶² rear seatbacks up (cu. ft.)	14.1	15.1	15.1	15.1	15.1	15.1	15.1	15.1	15.1	15.1	15.1	15.1
Fuel tank (gal.)	14.5	15.8	15.8	15.8	15.8	15.8	15.8	15.8	15.8	13.2	13.2	13.2
Seating capacity	5	5	5	5	5	5	5	5	5	5	5	5
TIRES												
All-season	Standard	Standard	Standard	Standard	Standard	Standard	Standard	Standard	Standard	Standard	Standard	Standard
Summer	N/A	N/A	N/A	N/A	N/A	N/A	N/A	N/A	Available	N/A	N/A	N/A
Spare: Temporary	Standard	Standard	Standard	Standard	Standard	Standard	Standard	Standard	Standard	Standard	Standard	Standard
MILEAGE ESTIMATES (mpg city/highway/combined)⁵⁸												
	29/41/34	28/39/32	27/38/31	22/33/26	28/39/32	28/39/32	27/38/31	22/32/26	22/31/25	51/53/52	44/47/46	44/47/46

CARS BUILT FOR THE WAY YOU LIVE

At Toyota, we build cars for how you live. From building advanced safety features designed to help prevent crashes to driving cross-country to understand how we can make your driving experience better, our work starts with understanding your needs. Building cars for how you live also means thinking about tomorrow — from fuel efficiency and environmental innovations, to things beyond cars, like a bicycle that you can control with your mind. And because what we learn building cars can help improve lives in other places, we do things like help communities rebuild their homes quickly after a disaster and work with soup kitchens to help them serve more people faster. Toyota. Built for how you live. Together we are going places.

DISCLOSURES

1. Toyota strives to build vehicles to match customer interest and thus they typically are built with popular options and option packages. Not all options/packages are available separately and some may not be available in all regions of the country. See toyota.com for information about options/packages commonly available in your area. If you would prefer a vehicle without any or with different options, contact your dealer to check for current availability or the possibility of placing a special order. Color(s) depicted may vary based on multiple factors, including ambient lighting and the format in which it is being viewed (e.g., computer, mobile device or print).

2. Extra-cost color. 3. Do not rely exclusively on the Blind Spot Monitor. Always look over your shoulder and use your turn signal. There are limitations to the function, detection and range of the monitor. See *Owner's Manual* for additional limitations and details. 4. Always drive safely and obey traffic laws. Vehicle user interface is a product of Google and its terms and privacy statement apply. To use Android Auto on your car display, you'll need an Android Auto compatible vehicle or aftermarket stereo, an Android phone running Android 5.0 or higher, and the Android Auto app. Google, Android and Android Auto are trademarks of Google LLC. 5. Always drive safely and obey traffic laws. Apps and services are subject to change at any time without notice. Data charges may apply. Apple CarPlay® functionality requires a compatible iPhone® connected with an approved data cable into the USB media port. Apple CarPlay® is a registered trademark of Apple Inc. 6. Amazon, Alexa and all related logos are trademarks of Amazon.com, Inc. or its affiliates. Requires adequate signal strength and smartphone. See applicable application for details. Not all Amazon Alexa functionality is available for in-vehicle use and some functions depend on smart home technology. Download of the Toyota+Alexa app is required to begin in-vehicle use of Alexa. Data charges may apply. Apps, prices and services subject to change at any time without notice. To learn more, go to <https://www.toyota.com/audio-multimedia>. To learn more about Toyota's data collection, use, sharing and retention practices, please visit <https://www.toyota.com/privacyvts/>. 7. May not be compatible with all mobile phones, MP3/WMA players and like models. 8. Advanced voice recognition capabilities vary by head unit. 9. The Bluetooth® word mark and logos are registered trademarks owned by Bluetooth SIG, Inc., and any use of such marks by Toyota is under license. A compatible Bluetooth®-enabled phone must first be paired. Phone performance depends on software, coverage and carrier. 10. SiriusXM® audio services require a subscription sold separately by Sirius XM Radio Inc. If you decide to continue service after your trial, the subscription plan you choose will automatically renew thereafter and you will be charged according to your chosen payment method at then-current rates. Fees and taxes apply. To cancel, you must call SiriusXM at 1-866-635-2349. See SiriusXM Customer Agreement for complete terms at www.siriusxm.com. All fees and programming subject to change. Not all vehicles or devices are capable of receiving all services offered by SiriusXM. Current information and features may not be available in all locations, or on all receivers. ©2019 Sirius XM Radio Inc. SiriusXM and all related marks and logos are trademarks of Sirius XM Radio Inc. 11. SiriusXM All Access trial length and service availability may vary by model, model year or trim. 12. Connected Services depends on an operative telematics device, a cellular connection, navigation map data, GPS signal strength and other factors outside of Toyota's control, all of which can limit system functionality or availability, including access to response center and emergency support. Service may vary by vehicle and region. Terms of Use apply. Data charges may apply. Apps and services subject to change at any time without notice. See toyota.com/connected-services for details. To learn about Toyota's data collection, use, sharing and retention practices, please visit <https://www.toyota.com/privacyvts/>. Stolen vehicle police report required to use Stolen Vehicle Locator. 13. Toyota Safety Connect® depends on an operative telematics device, a cellular connection, navigation map data and GPS signal strength and other factors outside of Toyota's control, all of which can limit system functionality or availability, including access to response center and emergency support. Stolen vehicle police report required to use Stolen Vehicle Locator. Registration required. Service subject to change at any time without notice. Terms of Use apply. Service may vary by vehicle and region. See usage precautions and service limitations in *Owner's Manual* and at toyota.com/connected-services/ for additional details. To learn about Toyota's data collection, use, sharing and retention practices, please visit <https://www.toyota.com/privacyvts/>. 14. The Safety Connect® trial period is at no extra cost and begins on the original date of purchase or lease of a new vehicle. After the trial period expires, enrollment in paid subscription is required to access the service. 15. Eligible vehicle and wireless service required. Coverage and service not available everywhere. Valid in the contiguous U.S. and Alaska. Do not drive distracted. Go to att.com/toyota for terms and conditions. Wi-Fi Connect is available on select 2019 and newer Toyota vehicles. Visit toyota.com for vehicle availability. Data usage and charges apply. Up to 5 devices can be supported using in-vehicle connectivity. Apps and services subject to change at any time without notice. 16. The Wi-Fi Connect trial period is at no extra cost and begins on the date of activation. After the trial period expires, enrollment in a paid subscription is required to access the service. Terms and conditions apply. 17. HD Radio™ Technology manufactured under license from iBiquity Digital Corporation U.S. and Foreign Patents. HD Radio™ and the HD, HD Radio, and "Arc" logos are proprietary trademarks of iBiquity Digital Corp. 18. Information provided is based on the last time data was collected from the vehicle and may not be up to date. Service Connect depends on an operative telematics device, a cellular connection, navigation map data, GPS signal strength and other factors outside of Toyota's control, which can limit functionality or availability. Service may vary by vehicle and region. Registration required. Service subject to change at any time without notice. Terms and conditions of subscription service agreement apply. See usage precautions and service limitations in *Owner's Manual* and at toyota.com/connected-services/ for additional details. To learn about Toyota's data collection, use, sharing and retention, please visit <https://www.toyota.com/privacyvts/>. 19. The Service Connect trial period is at no extra cost and begins on the original date of purchase or lease of a new vehicle. After the respective trial period expires, enrollment in paid subscription is required to access the service. 20. Use only if aware of circumstances surrounding vehicle and it is legal and safe to do so (e.g., do not remotely start engine if vehicle is in an enclosed space or vehicle is occupied by a child). Remote Connect depends on an operative telematics device, a cellular connection, GPS signal strength and other factors outside of Toyota's control, which can limit system functionality and availability. Service may vary by vehicle and region. Registration and app download required. Terms of Use apply. Data charges may apply. Remote start/stop not available on manual-transmission-equipped vehicles. Services subject to change at any time without notice. See usage precautions and service limitations in *Owner's Manual* and at <https://www.toyota.com/connected-services/> for additional details. To learn about Toyota's data collection, use, sharing and retention practices, please visit <https://www.toyota.com/privacyvts/>. 21. The Remote Connect trial period is at no extra cost and begins on the original date of purchase or lease of a new vehicle. After the trial period expires, enrollment in a paid subscription is required to access the service. Terms and conditions apply. 22. JBL® and Clari-Fi® are registered trademarks of Harman International Industries, Inc. 23. Dynamic Navigation depends on an operative telematics device, a cellular connection, navigation map data and GPS signal strength, and other factors outside of Toyota's control, which can limit system functionality or availability. Services not available in every city or roadway. Use common sense when relying on information provided. Service may vary by vehicle and region. Registration is required. Terms of Use apply. See *Owner's Manual* and <https://toyota.com/connected-services/> for additional limitations and details. To learn about Toyota's data collection, use, sharing and retention practices, please visit <https://www.toyota.com/privacyvts/>. 24. The Dynamic Navigation three year trial period begins on the original date of purchase or lease of a new vehicle. After the trial period expires, enrollment in paid subscription is required to access the service. 25. Dynamic voice recognition capabilities vary by head unit. 26. Destination Assist depends on an operative telematics device, a cellular connection, navigation map data and GPS signal strength and other factors outside of Toyota's control, which can limit system ability functionality or availability. Use common sense when relying on this information. Service may vary by vehicle and region. Registration required. Services subject to change at any time without notice. Terms of Use apply. See *Owner's Manual* and toyota.com/connected-services/ for additional limitations and details. To learn about Toyota's data collection, use, sharing and retention practices, please visit <https://www.toyota.com/privacyvts/>. 27. The Destination Assist Connect trial period is at no extra cost and begins on the original date of purchase or lease of a new vehicle. After the trial period expires, enrollment in a paid subscription is required to access the service. 28. Qi wireless charging may not be compatible with all mobile phones, MP3/WMA players and like models. When using the wireless charging system, avoid placing metal objects between the wireless charger and the mobile device when charging is active. Doing so may cause metal objects to become hot and could cause burns. 29. The backup camera does not provide a comprehensive view of the rear area of the vehicle and you should also look around the vehicle, using mirrors to confirm rearward clearance. Environmental conditions may limit effectiveness and view may become obscured. See *Owner's Manual* for additional limitations and details. 30. The Tire Pressure Monitor System alerts the driver when tire pressure is critically low. For optimal tire wear and performance, tire pressure should be checked regularly with a gauge; do not rely solely on the monitor system. See *Owner's Manual* for additional limitations and details. 31. SofTex® is a registered trademark of Toyota Motor Sales, U.S.A., Inc. 32. Dynamic Radar Cruise Control is designed to assist the driver and is not a substitute for safe and attentive driving practices. System effectiveness is dependent on many factors including road, weather and traffic conditions. DRCC not available on manual transmissions. See *Owner's Manual* for additional limitations and details. 33. Lane Departure Alert with Steering Assist is designed to read visible lane markers under certain conditions. It provides a visual and audible alert and slight steering force when lane departure is detected. It is not a collision-avoidance system or a substitute for safe and attentive driving. Effectiveness is dependent on many factors including road, weather

DISCLOSURES (continued)

and vehicle conditions. See *Owner's Manual* for additional limitations and details. **34.** EV Mode works under certain conditions at low speeds up to one-half mile. Quick acceleration and braking, road and vehicle conditions, or climate control use may prevent or limit usage or effectiveness of EV Mode. See *www.fueleconomy.gov*. Driving speed and distance are limited. See *Owner's Manual* for additional limitations and details. **35.** Toyota Safety Sense™ effectiveness is dependent on many factors including road, weather and vehicle conditions. Drivers are responsible for their own safe driving. Always pay attention to your surroundings and drive safely. See *Owner's Manual* for additional limitations and details. **36.** The Bird's Eye View Camera does not provide a comprehensive view of the area surrounding the vehicle and you should also look around the vehicle, using mirrors to confirm surrounding clearance. Environmental conditions may limit effectiveness and view may become obscured. See *Owner's Manual* for additional limitations and details. **37.** This floor mat/floor liner was designed specifically for use in your model and model year vehicle and SHOULD NOT be used in any other vehicle. To avoid potential interference with pedal operation, each mat/liner must be secured with its fasteners. Do not install a floor mat/floor liner on top of an existing floor mat/floor liner. **38.** The Smart Key System may interfere with some pacemakers or cardiac defibrillators. If you have one of these medical devices, please talk to your doctor to see if you should deactivate this system. **39.** HomeLink® and the HomeLink® house icon are registered trademarks of Gentex Corporation. **40.** Rated for 12 volts. See *Owner's Manual* for additional limitations and details. **41.** When the system is on, Automatic Electric Parking Brake is designed to automatically engage the Electric Parking Brake under limited conditions. It may not hold the vehicle under all conditions and does not function when the vehicle is in Reverse. Automatic Electric Parking Brake is not a substitute for manual use of the Electric Parking Brake. See *Owner's Manual* for additional limitations and details. **42.** When the system is on, Brake Hold is designed to keep the brakes engaged after the driver brings the vehicle to a complete stop. It may not hold the vehicle under certain conditions and does not function when the vehicle is in Reverse. Brake Hold is not a substitute for safe and attentive driving. See *Owner's Manual* for additional limitations and details. **43.** Vehicle Stability Control is an electronic system designed to help the driver maintain vehicle control under adverse conditions. It is not a substitute for safe and attentive driving practices. Factors including speed, road conditions, weather and driver steering input can all affect whether VSC will be effective in preventing a loss of control. See *Owner's Manual* for additional limitations and details. **44.** Brake Assist is designed to help the driver take advantage of ABS and is not a substitute for safe driving practices. Braking effectiveness also depends on proper vehicle maintenance, tire and road conditions. See *Owner's Manual* for additional limitations and details. **45.** Smart Stop Technology® operates only in the event of certain contemporaneous brake and accelerator pedal applications. When engaged, the system will reduce power to help the brakes bring the vehicle to a stop. Factors including speed, road conditions and driver input can all impact stopping distance. Smart Stop Technology® is not a substitute for safe and attentive driving and does not guarantee instant stopping. See *Owner's Manual* for additional limitations and details. **46.** Airbag systems are Supplemental Restraint Systems and are designed to inflate only under certain conditions and in certain types of severe collisions. To decrease the risk of injury from an inflating airbag, always wear seatbelts and sit upright in the middle of the seat as far back as possible. Do not put objects in front of an airbag or around the seatback. Do not use a rearward-facing child seat in any front passenger seat. See *Owner's Manual* for additional limitations and details. **47.** Whiplash-Injury-Lessening front seats can help reduce the severity of whiplash injury in certain rear-end collisions. **48.** The Pre-Collision System (PCS) with Pedestrian Detection (PD) is designed to determine if impact is imminent and help reduce impact speed and damage in certain frontal collisions involving a vehicle or a pedestrian. PCS w/PD is not a substitute for safe and attentive driving. System effectiveness depends on many factors, such as speed, size and position of pedestrian and weather, light and road conditions. See *Owner's Manual* for additional limitations and details. **49.** Automatic High Beams operate at speeds above 25 mph. Factors such as a dirty windshield, weather, lighting and terrain limit effectiveness, requiring the driver to manually operate the high beams. See *Owner's Manual* for additional limitations and details. **50.** Do not rely exclusively on the Rear Cross-Traffic Alert system. Always look over your shoulder and use your mirrors to confirm rear clearance. There are limitations to the function, detection and range of the system. See *Owner's Manual* for additional limitations and details. **51.** Intelligent Clearance Sonar (ICS) is designed to assist drivers in avoiding potential collisions at speeds of 9 mph or less. Certain vehicle and environmental factors, including an object's shape, size and composition, may affect the system's effectiveness. Always look around outside the vehicle and use mirrors to confirm clearance. See *Owner's Manual* for additional limitations and details. **52.** Do not rely exclusively on the Rear Cross-Traffic Braking system. Always look over your shoulder and use your mirrors to confirm rear clearance. The system cannot prevent all collisions, and performance is dependent on road, weather and vehicle conditions. See *Owner's Manual* for additional limitations and details. **53.** Hill Start Assist Control is designed to help minimize backward rolling on steep ascents. It is not a substitute for safe driving judgment and practices. Factors including speed, grade, surface conditions and driver input can all affect whether HAC will be effective in preventing a loss of control. See *Owner's Manual* for additional limitations and details. **54.** The engine immobilizer is a state-of-the-art anti-theft system that is initiated when you insert your key into the ignition switch or bring a Smart Key fob into the vehicle. The engine will only start if the code in the transponder chip inside the key/fob matches the code in the vehicle's immobilizer. The transponder chip is embedded in the key/fob and can be costly to replace. If you lose a key or fob, your Toyota dealer can help or go to www.aloa.org to find a qualified locksmith in your area who can perform high-security key service. **55.** ToyotaCare covers normal factory scheduled maintenance for two years or 25,000 miles, whichever comes first. Certain models require a different maintenance schedule as described in their Maintenance Guide. 24-hour Roadside Assistance is also included for two years, unlimited mileage. Roadside Assistance does not include parts and fluids, except emergency fuel delivery. See Toyota dealer for details and exclusions. Valid only in the continental U.S. and Alaska. **56.** No-cost option. **57.** Summer tire life may be substantially less than mileage expectancy, depending on driving conditions. **58.** 2020 EPA-estimated mileage. Actual mileage will vary. **59.** When equipped with available Navigation Upgrade Package. **60.** Requires adequate cellular coverage and GPS signal strength. May not work in all areas. Service may vary by vehicle and region. See Toyota Dealer for details and exclusions. **61.** Apps, prices and services vary by phone carrier and are subject to change at any time without notice. Subject to smartphone connectivity and capability. Data charges may apply. Skills and services subject to change at any time without notice. **62.** iPhone® is a registered trademark of Apple Inc. All rights reserved. **63.** Android is a trademark of Google LLC. **64.** Google is a trademark of Google LLC. **65.** Always drive safely and obey traffic laws. Functionality depends on many factors outside of Toyota's control. Actions and services subject to change at any time without notice. To learn more, go to <https://www.toyota.com/connected-services>. To learn more about Toyota's data collection, use, sharing and retention practices, please visit <https://www.toyota.com/privacyvts/>. **66.** 2020 EPA-estimated 51 city/53 highway/52 combined mpg for Camry Hybrid LE. Actual mileage will vary. **67.** Cargo and load capacity limited by weight and distribution. Always properly secure cargo and cargo area. **68.** Genuine Toyota Paint Protection Film by 3M™ is designed for specific sections of the vehicle most prone to chipping and may vary depending on vehicle model. Select applications may require an additional charge. Toyota Genuine Accessory Warranty only applies when installation is performed by a trained Toyota-approved installer. See Toyota dealer for details. **69.** The universal tablet holder is intended for passengers only. Drivers should always be sure to obey traffic regulations and maintain awareness of the road and traffic conditions at all times. Use of aftermarket accessories may pose an increased risk of injury to occupants in the event of an accident. Tablet sold separately.

Toyota strives to build vehicles to match customer interest and thus they typically are built with popular options and option packages. Not all options/packages are available separately and some may not be available in all regions of the country. See toyota.com for information about options/packages commonly available in your area. If you would prefer a vehicle without any or with different options, contact your dealer to check for current availability or the possibility of placing a special order. Color(s) depicted may vary based on multiple factors, including ambient lighting and the format in which it is being viewed (e.g., computer, mobile device or print).

Some vehicles are shown with available equipment. Seatbelts should be worn at all times. For details on vehicle specifications, standard features and available equipment in your area, contact your Toyota dealer. A vehicle with particular equipment may not be available at the dealership. Ask your Toyota dealer to help locate a specifically equipped vehicle. All information presented herein is based on data available at the time of posting, is subject to change without notice and pertains specifically to mainland U.S.A. vehicles only. Vehicles shown may be prototypes and/or shown with options. Actual models may vary.



For Toyota Mobility program details, go to www.toyota.com/mobility or call the Toyota Customer Assistance Center at 1-800-331-4331