



# 01 LAND CRUISER

Riverrock Green Mica with Ivory or Shadow Gray Interior

THE POWER TO GO WHERE OTHER FOUR-FOOTED CREATURES FEAR TO TREAD.

Whether sitting on the savanna or refueling at base camp, Land Cruiser always looks poised, lean and muscular, projecting a commanding presence. It's the natural habitat of the global adventure seeker, and, as Automobile Magazine's "All-Star Winner for Best Large SUV,"\* it has few rivals. After all, if you want to explore the far corners of the earth, shouldn't you have the vehicle that's already blazed the trail?

**STANDARD FEATURES**

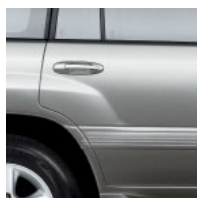
- Aerodynamic multi-reflector halogen headlamps with Daytime Running Lights (DRL) and auto on/off feature
- Integrated fog lamps
- Color-coordinated front and rear bumpers and body side moldings
- P275/70R16 tires on 5-spoke aluminum alloy wheels
- Full-time 4WD system with locking center differential
- Active TRAC 4-wheel traction control
- Vehicle Skid Control system (VSC)
- Front and rear frame-mounted towing hooks
- Front and rear heavy-duty mudguards
- All-Weather Guard Package—heavy-duty battery, starter and windshield washer fluid tank; rear-seat heater ducts
- Dual color-keyed power heated outside mirrors
- Privacy glass with UV reduction
- Tilt/slide power glass moonroof with sunshade and one-touch open/close operation with pinch protection
- Auto-dimming electrochromic rearview mirror with compass<sup>2</sup>
- Leather-wrapped steering wheel and shift lever
- Driver and front passenger dual sun visors with illuminated vanity mirrors
- Tilt steering column
- Driver and front passenger air bag Supplemental Restraint System (SRS)<sup>3</sup>
- Overhead console with storage compartments
- Dual maplights for front- and second-row seats
- Variable intermittent front and intermittent rear wipers
- 10-way driver and 8-way front passenger power-adjustable heated leather seats with armrests
- Reclining leather 60/40 split/fold-down second-row bench seat with center and outboard headrests and 3-point seatbelts
- Anti-theft system with engine immobilizer
- Key-integrated multi-function remote keyless entry system with panic feature
- Cruise control
- CFC-free automatic climate control with air filtration
- Front and rear door and front seatback storage pockets
- Rear-seat heater with separate controls
- Six cup holders
- Center console storage area
- Three auxiliary power outlets (center instrument cluster, console storage area, rear cargo area)
- Outside temperature display
- Speedometer, tachometer, coolant temperature, fuel level, oil pressure and voltmeter gauges
- Digital odometer and twin tripmeters
- Air bags, seatbelts, low fuel level, door-ajar and rear tailgate warning lights
- JBL Premium 3-in-1 ETR/Cassette/CD with 6-disc in-dash changer, 7 speakers, 300 watts (maximum output), FM diversity reception and adjustable power antenna



Available 5-spoke aluminum alloy wheel

**OPTIONS PACKAGE**

- **Navigation System**—includes DVD-based navigation system with 7-inch display, integrated audio and climate controls and JBL Premium 3-in-1 ETR/Cassette/CD with center console 6-disc CD changer, 7 speakers, 300 watts (maximum output), FM diversity reception and adjustable power antenna
- **Third Seat Package**—includes foldaway/removable leather-trimmed 50/50 split/fold-down rear bench seat with outboard headrests and 3-point seatbelts, 2-point center lap belt, power rear quarter windows, 3 rear-seat cup holders, assist grips, child-protector rear hatch lock and independent automatic rear climate control system

**COLORS**


Thunder Cloud Metallic with Shadow Gray Interior



Natural White with Ivory or Shadow Gray Interior



CHampagne Pearl with Ivory or Shadow Gray Interior



Riverrock Green Mica with Ivory or Shadow Gray Interior



Mahogany Pearl with Ivory Interior



Imperial Jade Mica with Ivory or Shadow Gray Interior



Atlantis Blue Mica with Ivory or Shadow Gray Interior



Black with Ivory or Shadow Gray Interior

<sup>2</sup>Without compass on models with navigation system.

<sup>3</sup>The Toyota driver and front passenger air bags are Supplemental Restraint Systems (SRS). The driver and front passenger air bags are designed to inflate in a severe frontal collision. In all other accidents, the air bags will not inflate. To decrease the risk of injury from a deploying air bag, always wear seatbelts and sit upright in the middle of the seat as far back as possible from the air bag modules. Do not put objects in front of an air bag. Do not use rearward-facing child seats in any front passenger seat. The force of a deploying air bag SRS may cause serious injury or death. Please see your Owner's Manual for further instructions.

**SPECIFICATIONS**
**Mechanical/Performance**

Engine	4.7-liter DOHC 32-valve EFI V8 230 hp @ 4,800 rpm; 320 lb.-ft. @ 3,600 rpm
Ignition	Distributorless Toyota Direct Ignition system (TDI)
Transmission	4-speed electronically controlled automatic overdrive with intelligence (ECT-i) and second-gear start mode
Body construction	Unitized steel body on 9-member ladder frame
Drivetrain	Full-time 4-wheel-drive system with locking center differential
Suspension	Independent double-wishbone front suspension with torsion bar springs and stabilizer bar; 4-link rear suspension with coil springs, stabilizer bar and semi-floating axle
Steering	Engine speed-sensing power-assisted rack-and-pinion
Turning circle diameter — curb to curb (ft.)	39.7
Brakes	Power-assisted 4-piston front/2-piston rear, ventilated disc brakes with hydraulic brake booster
Anti-lock Brake System (ABS) with Brake Assist	Standard, operates in high and low range
Active TRAC 4-wheel traction control	Standard
Vehicle Skid Control (VSC)	Standard

**Exterior Dimensions (in.)**

Overall height	73.2
Overall width	76.4
Overall length	192.5
Wheelbase	112.2
Tread width (front/rear)	63.8/63.6

**Interior dimensions front/middle/rear (in.)**

Head room	39.2/38.8/36.3
Shoulder room	62.4/61.2/61.2
Hip room	58.6/57.9/60.5
Leg room	42.3/34.3/27.3
Seating capacity (standard/available) <sup>6</sup>	5/8

**Off-Highway**

Skid plates	Transfer case and fuel tank
Angle of approach/departure/breakover (degrees)	34/26/25
Minimum running ground clearance (in.)	9.8
Rear axle ratio	4.30:1
Transfer case ratios — 2-speed (high/low)	1.0:1/2.488:1

**Weights and Capacities**

Curb weight (lbs.)	5,115
Gross Vehicle Weight Rating — GVWR (lbs.)	6,860
Payload <sup>7</sup> (lbs.)	1,745
Cargo volume, (cu. ft.) behind front/middle/rear seats without available third seat	90.8/59.7/NA
with available third seat	90.8/39.2/20.8
Towing capacity <sup>8</sup> (lbs.)	6,500
Fuel tank (gals.)	25.4

**Tires**

Size	P275/70R16
Type	Mud-and-Snow-rated steel-belted radial blackwall
Spare	Full-size with alloy wheel

**Mileage Estimates (MPG City/Highway)**

4-speed automatic overdrive	13/16
-----------------------------	-------

<sup>5</sup>See your Toyota dealer for more details about the new vehicle warranty.

<sup>6</sup>With available Third Seat Package.

<sup>7</sup>Including weight of occupants, equipment and cargo.

<sup>8</sup>Not to exceed GCWR of 12,000 lbs. when equipped with appropriate hitch. Requires additional equipment. See your dealer for details.

Toyota Land Cruisers are designed to meet off-road driving requirements. Abusive use may result in bodily harm or damage. Toyota encourages responsible operation to protect you, your vehicle and the environment. Seatbelts should be worn at all times, and please do not allow passengers to ride in the cargo area. Towing receiver hitches/ball mount kits are not intended to provide crash protection. Some vehicles shown with available equipment. For details on vehicle specifications, standard features and available equipment in your area, contact your Toyota dealer. A vehicle with particular equipment may not be available at the dealership. Ask your Toyota dealer to help locate a specifically equipped vehicle. Specifications, standard features and available equipment are based upon information available at the time of printing, are subject to change without notice, are for mainland U.S.A. vehicles only and may differ in the state of Hawaii and in other regions.

1-800-GO-TOYOTA

©2000 Toyota Motor Sales, U.S.A., Inc.