



04 LAND CRUISER

Land Cruiser shown in Black with available Roof Rack and Running Board Package and 18" aluminum alloy wheels.

Land Cruiser's many remarkable features include:

- Full-time 4-wheel drive with locking center differential
- Vehicle Stability Control (VSC)²
- Traction Control (TRAC)
- Available 18" alloy wheels
- Power tilt and telescopic leather-wrapped steering wheel with audio controls
- Available Toyota voice-activated DVD navigation system¹ with 7" display and backup camera³ with BluetoothTM⁴ wireless technology (shown at left)
- Driver and front passenger power-adjustable heated leather-trimmed seats
- JBL Premium 3-in-1 AM/FM Cassette/6-disc in-dash CD changer, seven speakers, 300 watts (maximum output), FM diversity reception and adjustable power antenna
- Driver and front passenger multi-stage airbags⁵
- Available front seat-mounted side airbags and front and rear side curtain airbags⁵
- Available rear-seat DVD entertainment system

¹See Combinations section footnote 3 for more information on Toyota's voice-activated DVD navigation system.

²See Combinations section footnote 7 for more information on Toyota's Vehicle Stability Control (VSC).

³The backup camera is designed to capture a photographic image within the limited frame capabilities of the camera's lens and is not intended to provide a comprehensive view of the entire rear area of the vehicle. This system should not be exclusively relied upon to confirm rearward clearance.

⁴BluetoothTM is a registered trademark of Bluetooth SIG, Inc.

⁵See Combinations section footnote 6 for more information on Toyota's driver, front passenger, front seat-mounted side airbag and side curtain airbag Supplemental Restraint Systems (SRS).

MODEL GRADE FEATURES
EXTERIOR

Aerodynamic multi-reflector halogen headlamps with Daytime Running Lights (DRL) and auto on/off feature	S	Color-coordinated front and rear bumpers and body side moldings	S
Integrated fog lamps	S	Front and rear frame-mounted towing hooks	S
Full-time 4WD system with locking center differential	S	Front and rear heavy-duty mudguards	S
17" 5-spoke aluminum alloy wheels with P275/65R17 tires	S	Dual color-keyed power heated outside mirrors	S
18" 5-spoke aluminum alloy wheels with P275/60R18 tires	0	Privacy glass with UV reduction	
All-Weather Guard Package — includes heavy-duty battery, starter and windshield washer fluid tank; rear-seat heater ducts	S		

EXTERIOR

Power tilt and telescopic leather-wrapped steering wheel with audio controls and leather-wrapped shift lever	S	Front and rear door and front seatback storage pockets	S
Tilt/slide power glass moonroof with sunshade and one-touch open/close operation with jam protection	S	Nine cup holders	S
Auto-dimming electrochromic rearview mirror with compass ¹	S	Center console storage area	S
Driver and front passenger dual sun visors with illuminated vanity mirrors	S	10-way driver and 8-way front passenger power-adjustable heated leather-trimmed seats with armrests and adjustable headrests	S
Overhead console with HomeLink® ² universal transceiver	S	Reclining leather-trimmed 60/40 split fold-down second-row bench seat with center armrest and adjustable headrests	S
Dual maplights for front- and second-row seats	S	Foldaway/removable leather-trimmed 50/50 split fold-down third-row bench seat with outboard headrests, 3-point seatbelts and 2-point center lap belt	S
Key-integrated multi-function remote keyless entry system with panic feature	S	CFC-free automatic climate control and independent automatic rear climate control system	S
Variable intermittent front and intermittent rear wipers	S	Power door locks and windows including power rear quarter windows	S
Cruise control	S	Airbags, seatbelts, low-fuel level, door-ajar and rear tailgate warning lights	S
JBL Premium 3-in-1 AM/FM Cassette/6-disc in-dash CD changer, seven speakers, 300 watts (maximum output), FM diversity reception and adjustable power antenna	S	Rear-seat audio system with wired headphone capability	S
Toyota voice-activated DVD navigation system ³ with 7" display and backup camera, ⁴ Bluetooth™ ⁵ wireless technology, integrated audio and climate controls, and JBL Premium AM/FM Cassette/center console-mounted 6-disc CD/DVD changer, seven speakers, 300 watts (maximum output), FM diversity reception and adjustable power antenna	P	Three auxiliary power outlets (center instrument cluster, console storage area and rear cargo area)	S
Multi-information display	S	Instrumentation: speedometer, tachometer, coolant temperature, fuel level, oil pressure and voltmeter gauges; digital odometer and twin tripmeters	S

S = Standard 0 = Optional P = Feature available only as part of an option package.



Standard 17" 5-spoke aluminum alloy wheel



Available 18" 5-spoke aluminum alloy wheel

¹Without compass on models with navigation system.

²HomeLink® is a registered trademark of Johnson Controls, Inc.

³The Toyota voice-activated DVD navigation system is designed to assist in locating an address or point of interest. Discrepancies may be encountered between the system and your actual location. Changes in street names, road closures, traffic flow or other road system changes may affect the accuracy of the mapping software. Rely upon your common sense to decide whether or not to follow a specified route. Detailed coverage not available in every city. Optional periodic geographical updates available at an additional cost. See your Navigation System Owner's Manual and your Toyota dealer for further details.

⁴The backup camera is designed to capture a photographic image within the limited frame capabilities of the camera's lens and is not intended to provide a comprehensive view of the entire rear area of the vehicle. This system should not be exclusively relied upon to confirm rearward clearance.

⁵Bluetooth™ is a registered trademark of Bluetooth SIG, Inc.

OPTIONS AND PACKAGES

- **Roof Rack and Running Board Package** — includes roof rails with cross bars and running boards
- **Navigation System³** — includes voice-activated DVD navigation system³ with 7" display and backup camera,⁴ Bluetooth^{TM5} wireless technology, integrated audio and climate controls, and JBL Premium AM/FM Cassette/center console-mounted 6-disc CD/DVD changer, seven speakers, 300 watts (maximum output), FM diversity reception and adjustable power antenna

ADDITIONAL OPTIONS

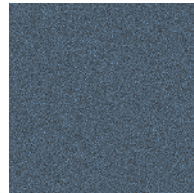
- **Driver and front passenger seat-mounted side airbags and front- and second-row side curtain airbags⁶**
- **18" 5-spoke aluminum alloy wheels with P275/60R18 tires**

COLORS


Natural White with Ivory or Shadow Gray interior



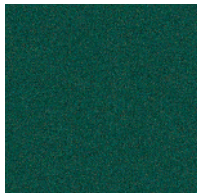
Thunder Cloud Metallic with Shadow Gray interior



Galactic Gray Mica with Shadow Gray interior



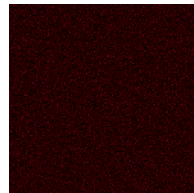
Sonora Gold Pearl with Ivory interior



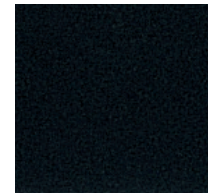
Imperial Jade Mica with Ivory interior



Atlantis Blue Mica with Ivory or Shadow Gray interior



Black Garnet Pearl with Ivory or Shadow Gray interior



Black with Ivory or Shadow Gray interior

³The Toyota voice-activated DVD navigation system is designed to assist in locating an address or point of interest. Discrepancies may be encountered between the system and your actual location. Changes in street names, road closures, traffic flow or other road system changes may affect the accuracy of the mapping software. Rely upon your common sense to decide whether or not to follow a specified route. Detailed coverage not available in every city. Optional periodic geographical updates available at an additional cost. See your Navigation System Owner's Manual and your Toyota dealer for further details.

⁴The backup camera is designed to capture a photographic image within the limited frame capabilities of the camera's lens and is not intended to provide a comprehensive view of the entire rear area of the vehicle. This system should not be exclusively relied upon to confirm rearward clearance.

⁵BluetoothTM is a registered trademark of Bluetooth SIG, Inc.

⁶The Toyota driver, front passenger, front seat-mounted side airbags and side curtain airbags are Supplemental Restraint Systems (SRS). The driver and front passenger airbags are designed to deploy in severe (usually frontal) collisions where the magnitude and duration of the forward deceleration of the vehicle exceed the design threshold. The side airbags and side curtain airbags are designed to deploy in a severe side-impact collision. The front and rear side curtain airbags are also Roll-Sensing Curtain Airbags (RSCA) and are designed to deploy at a severe tilt degree, roll or lateral G-force. In all other accidents, the airbags will not deploy. To decrease the risk of injury from a deploying airbag, always wear seatbelts, sit upright in the middle of the seat as far back as possible from the airbag modules and do not lean against the door. Do not put objects in front of an airbag or around the seatback. Do not use rearward-facing child seats in any front passenger seat. The force of a deploying SRS airbag may cause serious injury or death. Please see your Owner's Manual for further instructions.

Toyota Land Cruisers are designed to meet most off-road driving requirements. Abusive use may result in bodily harm or damage. Toyota encourages responsible operation to protect you, your vehicle and the environment.

Some vehicles are shown with available equipment. Seatbelts should be worn at all times. Please do not allow passengers to ride in the cargo area. Towing hitch receivers/ball mount kits are not intended to provide crash protection.

For details on vehicle specifications, standard features and available equipment in your area, contact your Toyota dealer. A vehicle with particular equipment may not be available at the dealership. Ask your Toyota dealer to help locate a specifically equipped vehicle. All information presented herein is based on data available at the time of printing, is subject to change without notice and pertains specifically to mainland U.S.A. vehicles only (may differ in the state of Hawaii, Puerto Rico, the U.S. Virgin Islands and in other regions).

SPECIFICATIONS
Mechanical/Performance

Engine	4.7-liter DOHC 32-valve EFI V8 235 hp @ 4,800 rpm; 320 lb.-ft. @ 3,400 rpm
Ignition	Electronic, with Toyota Direct Ignition (TDI)
Transmission	5-speed electronically controlled automatic overdrive (ECT) with second-gear start mode and power mode
Body construction	Unitized steel body on 9-member ladder frame
Drivetrain	Full-time 4-wheel-drive system with locking center differential
Suspension	Independent double-wishbone front suspension with torsion bar springs and stabilizer bar; 4-link rear suspension with coil springs, stabilizer bar and semi-floating axle
Steering	Engine speed-sensing power-assisted rack-and-pinion
Turning circle diameter — curb to curb (ft.)	39.7
Brakes	Power-assisted 4-piston front/2-piston rear ventilated disc brakes with hydraulic brake booster with Anti-lock Brake System (ABS) with Electronic Brake-force Distribution (EBD) and Brake Assist ⁸ ; ABS operates in high and low ranges
Traction Control (TRAC)	Standard
Vehicle Stability Control (VSC) ⁷	Standard

Exterior Dimensions (IN.)

Overall height/Overall width	73.2/76.4
Overall length/Wheelbase	192.5/112.2
Track (front/rear)	63.8/63.6

Interior dimensions front/middle/rear (IN.)

Head room	39.2/39.1/36.4
Shoulder room	62.4/61.2/61.2
Hip room	58.6/57.9/56.3
Leg room	42.3/34.3/27.3
Seating capacity	8

Off-Highway

Skid plates	On front suspension, fuel tank and transfer case
Angle of approach/departure/breakover (degrees)	31/24/24
Minimum running ground clearance (in.)	9.8
Rear axle ratio	4.10:1
Transfer case ratios — 2-speed (high/low)	1.0:1/2.488:1

Weights and Capacities

Curb weight (lbs.)	5,390
Gross Vehicle Weight Rating — GVWR (lbs.)	6,860
Payload ¹⁰ (lbs.)	1,470
Cargo volume (cu. ft.) ¹¹	
behind front/middle/rear seats	90.8/39.2/20.8
Towing capacity ¹² (lbs.)	6,500
Fuel tank (gal.)	25.4

Tires

Size	P275/65R17
Type	Mud-and-Snow-rated steel-belted radial blackwall
Spare	Full-size with alloy wheel

Mileage Estimates (mpg city/highway)¹³

13/16

⁷ Toyota Vehicle Stability Control (VSC) is an electronic system designed to help the driver maintain vehicle control under adverse conditions. It is not a substitute for safe driving practices. Factors including speed, road conditions and driver steering input can all affect whether VSC will be effective in preventing a loss of control. Please see your Owner's Manual for further details.

⁸ Brake Assist is designed to help the driver take full advantage of the benefits of ABS. It is not a substitute for safe driving practices. Braking effectiveness also depends on proper brake-system maintenance and tire and road conditions.

¹⁰ Including weight of occupants, available equipment and cargo; limited by weight distribution.

¹¹ Cargo and load capacity limited by weight and distribution.

¹² Before towing, confirm your vehicle and trailer are compatible, hooked up properly and you have all necessary additional equipment. Do not exceed any Weight Ratings and review all instructions and cautions from your trailer hitch manufacturer and Toyota vehicle Owner's Manual. Note that the maximum amount you can tow depends on the total weight of any cargo, occupants and available equipment in the vehicle.

¹³ 2004 preliminary mileage estimates determined by Toyota. EPA mileage estimates not available at time of printing. Actual mileage may vary.

All information presented herein is based on data available at the time of printing, is subject to change without notice and pertains specifically to mainland U.S.A. vehicles only (may differ in the state of Hawaii, Puerto Rico, the U.S. Virgin Islands and in other regions). Have you logged 100,000, 200,000 or more miles on your Toyota with the original engine, transmission and drivetrain? If you have, give us a call at 1-800-GO-TOYOTA and tell us your story. toyota.com
©2003 Toyota Motor Sales, U.S.A., Inc.