

Sequoia<sup>2011</sup>



**Am I the Sequoia type?** That depends. If your natural habitat is your couch, then probably not. But if you prefer to steer clear of the ordinary, this might well be your next vehicle. Exceptionally spacious and ruggedly capable, Toyota Sequoia is all about helping the maximum number of people get maximum enjoyment out of the day. Fill it full of kids, friends and whatever gear you'll need. Then go do something that will be worth talking about when you're standing around the water cooler on Monday morning. After all, you seem like you're more interested in looking for adventure than searching for the remote. **The 2011 Toyota Sequoia. Moving Forward.**

- 3** MODEL CHOICES  
SEQUOIA SR5  
SEQUOIA LIMITED  
SEQUOIA PLATINUM



*Every time you start off on a journey, whether it's a quiet weekend away or a quick trip around town, rest assured — we're with you every step of the way. For more than 50 years, Toyota engineering has created more than just durable vehicles. It's created enduring memories.*



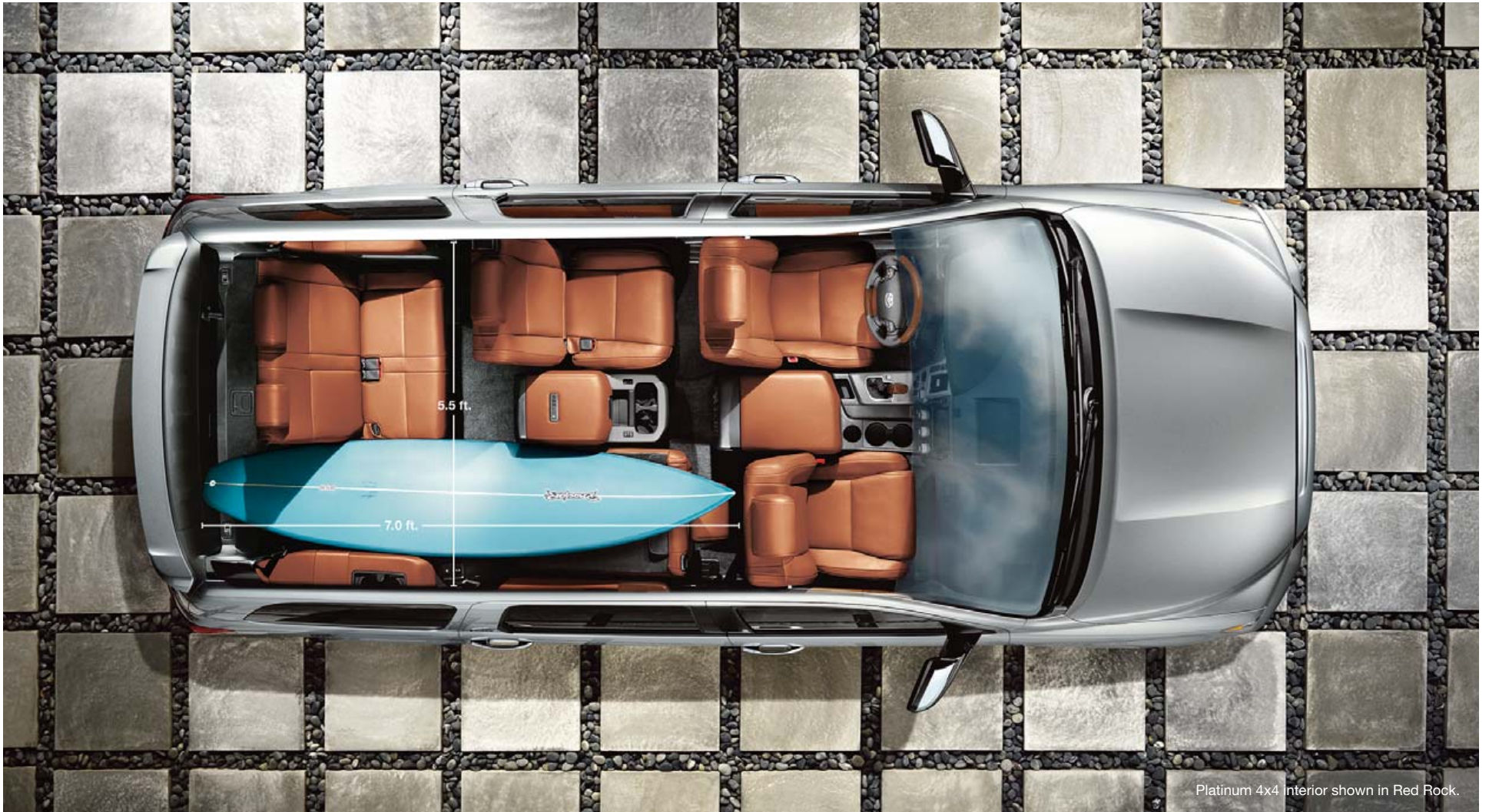


Platinum 4x4 shown in Silver Sky Metallic.



## How much room does it have?

**ft**  
**cu** More than you're likely to need. There's seating for eight<sup>1</sup> with the standard third row. Or you can fold the seats flat for 120.1 cubic feet of cargo space.<sup>2</sup> That's enough room for all the gear you and your crew will need to go just about anywhere. You could just say it's big — but big is too small a word to do it justice.



1. Standard on SR5 and Limited. Not available on Platinum. 2. Cargo and load capacity limited by weight and distribution.



# What can I do with all that space?

It's up to you. That's because Sequoia's interior isn't just vast; it's versatile. Both the sliding second-row and reclining third-row seats feature a split-fold design. That allows you to choose how to stow most of your stuff: upright, flat, you name it. You could also keep the seats upright and put cargo and up to eight people in the Sequoia. So really the question is, how many people will be calling in sick to work?

## Available power rear liftgate

The 2011 Sequoia offers an available power rear liftgate that makes it **easy to access all that rear cargo space**. Just press a button on the remote key fob, and the liftgate gently releases upward. To close it, press a button on the liftgate frame, or one on the dash, or use the key fob to close it automatically.

## Cargo space and more

There's more to the rear of Sequoia's cabin than just a whopping **120.1 cubic feet of usable cargo space!** There's also rear under-floor storage, plus a cargo area 12V auxiliary power outlet and grocery bag hooks. Those sitting in the third-row seat will find cup holders, personal storage and, on the Limited and Platinum, window shades.



**LONGEVITY FACT:** Sequoia's ignition system uses long-reach iridium-tipped spark plugs. Why iridium? It's six times harder, eight times stronger and has a melting point 1200 degrees higher than platinum.

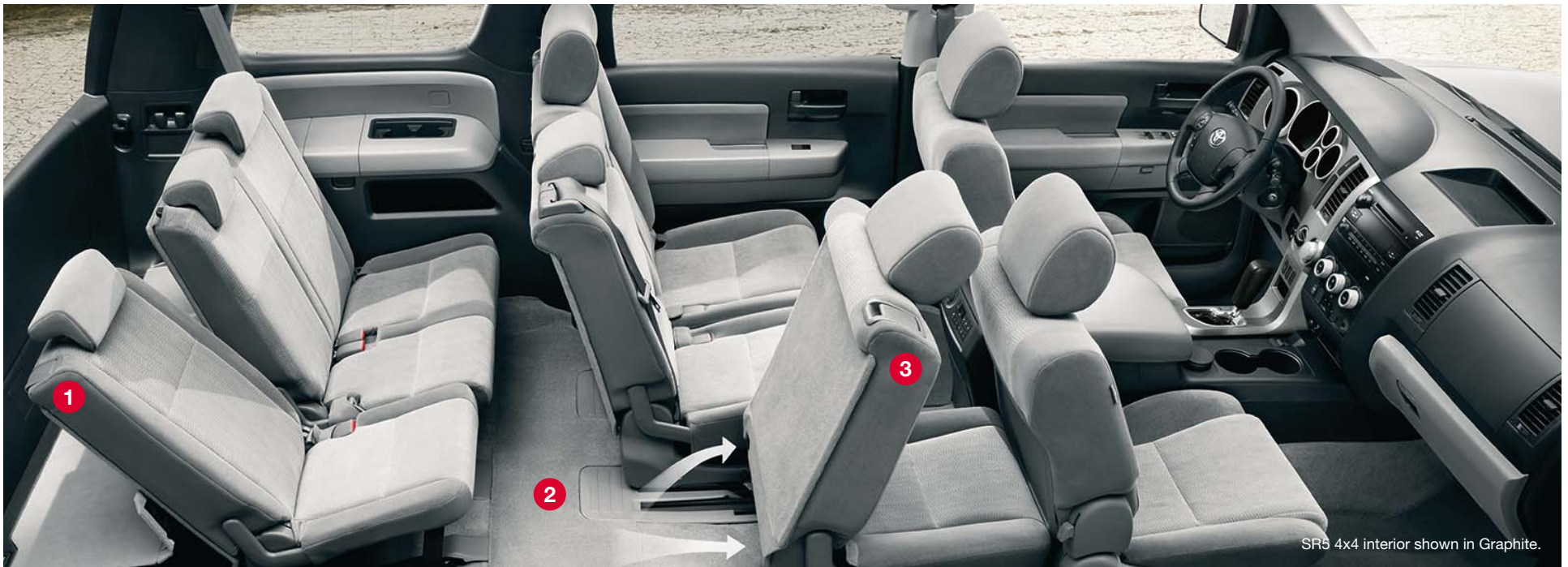
Platinum 4x4 shown in Magnetic Gray Metallic.

1. Cargo and load capacity limited by weight and distribution.



Need room? Fold the second- and third-row seats flat for 120.1 cubic feet of cargo space! And with the available **power reclining and folding third-row seat**, settling in for the long haul is as easy as pushing a button.

The **front-seat console on Sequoia Platinum** houses climate controls and cup holders for those in the second row. There are also auxiliary inputs for the available rear-seat entertainment system, plus a 115V outlet.



SR5 4x4 interior shown in Graphite.

**1.** The **reclining third-row seat** of Sequoia is wide enough to accommodate three adults in true comfort, or it can split-fold 60/40 for a combination of people and cargo. And because the seats **fold completely flat**, you can actually do what it says on that box and keep “this end up.”

**2.** The second-row seat features **one-touch access**. Say you’ve opened the rear passenger-side door on Sequoia. Just pull the lever on the outside of the second-row seat cushion. One lever — that’s all it takes to simultaneously fold the seat down and slide it forward. That means **easy access to the third-row seat** without the usual gymnastics.

**3.** To help make the most of its spacious interior, Sequoia features an **available sliding and reclining second-row seat**. You can use the versatility of its 40/20/40 split-fold design. Or you can **slide it back to add leg room**. That plus the extraordinary head room and shoulder room in the second row help make Sequoia one comfortable ride.



## Will my road trips require pavement?

No. Features like an available Adaptive Variable Suspension (AVS) system do give Sequoia perfect road manners. But with an available Multi-Mode 4WD system with Torsen<sup>®1</sup> limited-slip center differential, Sequoia is ready whenever the road turns to trail. In fact, that's when the real fun begins.



Limited 4x2 shown in Sandy Beach Metallic.

1. Torsen<sup>®</sup> is a registered trademark of Zexel Torsen, Inc.





Platinum 4x4 interior shown in Graphite.





## Is Sequoia an SUV or a private jet?

The confusion is understandable. Consider how relaxing and refined Sequoia's interior is as you settle into the heated/ventilated driver and front passenger seats that are available on Platinum models. Press a button, and that driver's seat automatically adjusts to your preset driving position. Then adjust the tilt/telescopic steering wheel, set the Dynamic Laser Cruise Control (DLCC)<sup>1</sup> and enjoy the drive. Where is your sense of adventure taking you today?

### Rear-seat DVD entertainment system

Sequoia's second-row seat feels like the front row of a theater. That's because you can **watch the latest Hollywood blockbuster or play video games** on the available rear-seat DVD entertainment system's 9-inch screen. With so much to do, the kids will be hoping they're not there yet. But relax — all the movies and games they bring along will fit in Sequoia's many storage compartments.

### Touch-screen navigation<sup>2</sup> with backup camera<sup>3</sup>

Sequoia's available touch-screen DVD navigation system includes a backup camera. Put Sequoia in Reverse, and it **automatically shows what the camera sees immediately behind you**. Which means if you're thinking of towing a boat, you'll be able to line up the tow hitch like a pro. What's more, this nav system has an auxiliary audio input compatible with most USB audio devices. And built-in *Bluetooth*<sup>®4</sup> technology for hands-free phone capability with music streaming.



1. See footnote 18 in Disclaimers section. 2. See footnote 15 in Disclaimers section. 3. See footnote 16 in Disclaimers section. 4. See footnote 14 in Disclaimers section.



# How is Sequoia designed to help protect me?

Advanced safety technologies are something you'll find throughout Sequoia. Clearly Toyota doesn't believe in simply relying on the vehicle's size to help ensure your safety. Instead, our engineers have equipped Sequoia with an array of both active and passive safety measures. Active safety features, such as Vehicle Stability Control (VSC),<sup>1</sup> help you avoid trouble. Passive safety features come to your aid in the event trouble proves unavoidable. Both help you breathe easier.



1. See footnote 20 in Disclaimers section.





Standard on every Sequoia is the **Star Safety System**,™ a suite of safety features that help drivers to avoid accidents in the first place. **Vehicle Stability Control (VSC)**<sup>1</sup> can compensate for loss of traction while cornering and help prevent sideways slipping. **Traction Control (TRAC)** employs throttle control to help reduce wheelspin and transfer torque to the wheel with the most traction. **Anti-lock Brake System (ABS)** senses a potential wheel lockup and pulses the brakes rapidly, so wheels rotate rather than skid, giving the driver more control. **Electronic Brake-force Distribution (EBD)** optimizes the braking effort distributed between front and rear axles, while **Brake Assist (BA)**<sup>2</sup> applies additional brake pressure if it detects a panic stop. **Smart Stop Technology (SST)**<sup>3</sup> reduces engine power and helps bring the vehicle to a stop when both brake and accelerator pedals are pressed at the same time under certain conditions.

1

On Platinum, **Dynamic Laser Cruise Control (DLCC)**<sup>4</sup> gauges the distance of the vehicles traveling ahead and adjusts driving speeds to help the driver maintain a preset distance. The range finder uses a laser that's located in Platinum's front bumper.

2

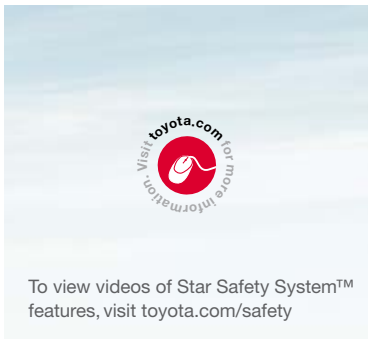
In certain types of frontal collisions, the **standard Advanced Airbag System**<sup>5</sup> senses impact severity, adjusting airbag deployment accordingly.

3

Standard **three-row side curtain airbags** cover all three passenger rows from front to back.

4

**3-point seatbelts** come in all seating positions. The front seats have pretensioners and 2-step force limiters. The second-row seats have an adjustable shoulder anchor and pretensioner for outboard passengers.



5

The **Roll-Sensing side Curtain Airbag (RSCA)** system controls deployment of side curtain airbags based on roll angle and speed from roll-rate sensors. The RSCA switch on Sequoia 4x4 models prevents inadvertent side curtain airbag deployment when traversing extremely uneven or rugged terrain that may cause the vehicle to tilt.



**ADVANCED CONTROL TECHNOLOGIES**

An **Anti-lock Brake System (ABS)** helps prevent Sequoia's brakes from locking up, while the sophisticated **Vehicle Stability Control (VSC)** helps prevent front and rear wheelslip by monitoring your steering angle and comparing it to the direction in which your vehicle is traveling. Having control means having peace of mind.

6

Sequoia has a total of eight airbags, including standard driver and front passenger **knee airbags**.

7

**LATCH (Lower Anchors and Tethers for CHildren)** includes lower anchors on all second-row seats and tether anchors on all second-row seats and the middle seat in the third row.

8

The **Tire Pressure Monitor System (TPMS)**<sup>6</sup> evaluates the pressure of the tires. When pressure is critically low, the monitor issues a warning, allowing the driver to address concerns.

1. See footnote 20 in Disclaimers section. 2. See footnote 6 in Disclaimers section. 3. See footnote 21 in Disclaimers section. 4. See footnote 18 in Disclaimers section. 5. See footnote 22 in Disclaimers section. 6. See footnote 24 in Disclaimers section.





## How serious is Sequoia about towing?

When we say it has an available 7400-lb. towing capacity,<sup>1,2</sup> we mean it. Take a look: There's an available 381-hp 5.7L V8. A fully boxed frame for strength and durability. And a TOW/HAUL mode that selects transmission shift points for optimum power. Boats, snowmobiles, campers — Sequoia helps tow them all with confidence. And without you getting stuck going uphill behind a loaded 18-wheeler.

### Two powerful V8s

Sequoia is available with an all-aluminum 381-hp **5.7L V8 that churns out 401 lb.-ft. of torque.** There's also an available DOHC 32-valve **4.6L V8 that produces 310 hp.** All Sequoia models have been designed to provide all the power you need. But what you might be surprised to learn is that both engines have received an Ultra Low Emission Vehicle II (ULEV-II) rating. So power and responsibility can go hand in hand.

### Electronically Modulated Air Suspension

There's more to towing and hauling than just a powerful engine. Maintaining ride height is especially important when the vehicle is carrying a lot of passengers or cargo weight. That's why Sequoia Platinum features Electronically Modulated Air Suspension. It **allows the driver to adjust ride height to compensate for changes in load.** So Sequoia's ride is always the same: smooth.



Limited 4x4 shown in Black with available accessory bike racks.

1. SR5 4x2 with available 5.7L V8. 2. See footnote 7 in Disclaimers section.





To view Demos & Videos of Sequoia in action, visit [toyota.com/sequoia](http://toyota.com/sequoia)



#### ACCESSORIES

Get personal. Add an individual touch to your Sequoia with Genuine Toyota accessories like TRD 22-in. forged alloy wheels and a cargo cover. Some accessories may not be available in all regions of the country. See your Toyota dealer for details.



Sequoia's independent **double-wishbone front and rear suspension** offers you the best of both worlds: **responsive handling on pavement and a smoother ride off-road**. To deliver this kind of performance, the **sophisticated suspension** featured on Sequoia utilizes low-pressure gas-filled shock absorbers and hollow stabilizer bars. Also enhancing Platinum's on-road performance is Active Variable Suspension (AVS) with three settings ranging from "comfort" to "sport."

Sequoia's **Automatic Limited-Slip Differential (Auto LSD)** is advanced technology that uses the brakes to **help reduce wheelspin and enhance traction** performance on road surfaces like sand or mud.

The available **Multi-Mode 4WD** system can help make molehills out of mountains. Simply turn the shift dial to engage the 4WD mode and let the Torsen<sup>®1</sup> limited-slip center differential do its work. The center differential locks up to get maximum **traction on extremely slippery or uneven surfaces**.



An available 5.7L V8 E85 Flex Fuel<sup>®</sup> engine makes Sequoia an alternative-fuel vehicle.

SR5 4x4 shown in Silver Sky Metallic with available 5.7L V8.

1. Torsen<sup>®</sup> is a registered trademark of Zexel Torsen, Inc. 2. See footnote 4 in Disclaimers section.



SR5 fabric  
in Graphite



SR5 fabric  
in Sand Beige



SR5 Sport fabric  
in Black



Limited leather  
in Graphite



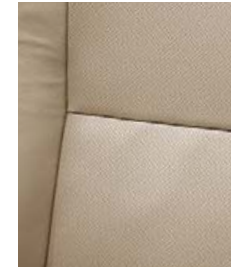
Limited leather  
in Sand Beige



Platinum perforated  
leather in Red Rock



Platinum perforated  
leather in Graphite



Platinum perforated  
leather in Sand Beige

## How many colors does it come in?

Sequoia offers eight exterior colors to choose from — easy to remember since it also offers available seating for eight. And each exterior color offers two or three interior colors to match. Decisions, decisions.



**BLACK**  
Graphite, Red Rock<sup>1</sup> or Sand Beige interior



**PYRITE MICA**  
Graphite, Red Rock<sup>1</sup> or Sand Beige interior



**CASSIS PEARL**  
Graphite, Red Rock<sup>1</sup> or Sand Beige interior



**SANDY BEACH METALLIC**  
Red Rock<sup>1</sup> or Sand Beige interior



**MAGNETIC GRAY METALLIC**  
Graphite or Red Rock<sup>1</sup> interior



**SILVER SKY METALLIC**  
Graphite or Red Rock<sup>1</sup> interior



**BLIZZARD PEARL<sup>1,2</sup>**  
Graphite, Red Rock<sup>1</sup> or Sand Beige interior



**SUPER WHITE<sup>3</sup>**  
Graphite or Sand Beige interior

### WHEELS

- 1 SR5 standard 18-in. alloy wheel
- 2 SR5 available 20-in. Sport alloy wheel
- 3 Limited standard 20-in. alloy wheel
- 4 Platinum standard 20-in. diamond-cut-finish alloy wheel





# Specifications

MECHANICAL AND PERFORMANCE	SR5	LIMITED	PLATINUM
<b>Engine</b>			
4.6-Liter DOHC 32-Valve i-FORCE V8 with Dual Independent Variable Valve Timing with intelligence (VVT-i); 310 hp @ 5400 rpm; 327 lb.-ft. @ 3400 rpm	Standard	NA	NA
5.7-Liter DOHC 32-Valve i-FORCE V8 with Dual Independent Variable Valve Timing with intelligence (VVT-i); 381 hp @ 5600 rpm; 401 lb.-ft. @ 3600 rpm	Available	Standard	Standard
5.7-Liter DOHC 32-Valve i-FORCE V8 E85 Flex Fuel engine with Dual Independent Variable Valve Timing with intelligence (VVT-i); 381 hp @ 5600 rpm; 401 lb.-ft. @ 3600 rpm	Available <sup>4</sup>	Available <sup>4</sup>	Available <sup>4</sup>
<b>Emission rating</b>	Ultra Low Emission Vehicle II (ULEV-II)		
<b>Ignition</b>	Electronic, with Toyota Direct Ignition (TDI)		
<b>Transmission</b>	6-speed Electronically Controlled automatic Transmission with intelligence (ECT-i); sequential shift mode and uphill/downhill shift logic; TOW/HAUL mode		
<b>Drivetrain</b>			
Rear-wheel drive	Standard	Standard	Standard
Multi-Mode 4WD system with Torsen <sup>®</sup> limited-slip center differential with locking feature	Available	Available	Available
<b>Body construction</b>	Reinforced body-on-frame construction		
<b>Suspension</b>			
Front high-mounted coil-spring independent double-wishbone front suspension with low-pressure gas-filled shock absorbers and hollow stabilizer bar; rear coil-spring independent double-wishbone suspension with low-pressure gas-filled shock absorbers and hollow stabilizer bar	Standard	Standard	NA
Electronically Modulated Air Suspension	NA	NA	Standard
Adaptive Variable Suspension (AVS) system	NA	NA	Standard
<b>Steering</b>	Engine speed-sensing Variable Flow Control (VFC) power-assisted rack-and-pinion		
Turning circle diameter, curb to curb (ft.)	39.2	39.2	39.2
<b>Brakes: power-assisted 4-wheel Anti-lock Brake System (ABS) with Electronic Brake-force Distribution (EBD) and Brake Assist (BA)<sup>6</sup></b>	Standard	Standard	Standard
<b>EXTERIOR DIMENSIONS (in.)</b>			
Overall width/height/length	79.9/77.0/205.1	79.9/77.0/205.1	79.9/77.0/205.1
Wheelbase	122.0	122.0	122.0
Track (front/rear)	67.9/69.1	67.9/69.1	67.9/69.1
<b>INTERIOR DIMENSIONS (in.) (front/second-row/third-row seats)</b>			
Head room with moonroof	38.3/38.9/36.0	38.3/38.9/36.0	38.3/38.9/36.0
Shoulder room	66.4/66.1/66.0	66.4/66.1/66.0	66.4/66.1/66.0
Hip room	61.5/62.6/50.4	61.5/62.6/50.4	61.5/62.6/50.4
Leg room	42.5/36.5/35.3	42.5/36.5/35.3	42.5/36.5/35.3
Seating capacity	8/7 (optional)	8/7 (optional)	7
<b>OFF-HIGHWAY</b>			
Approach/departure angle (degrees)	4x2: 27/20; 4x4: 27/21	4x2: 27/20; 4x4: 27/21	4x2: 27/20; 4x4: 27/21
Ground clearance (in.) (4x2/4x4)	9.9/10.0	9.9/10.0	9.9/10.0
Skid plates: on engine and transfer case (4x4 models)	Standard	Standard	Standard
<b>WEIGHTS AND CAPACITIES</b>			
Curb weight (lb.) (4x2/4x4)	5680/5920 (4.6L V8); 5730/5985 (5.7L V8)	5730/5985	5745/6045
Gross Vehicle Weight Rating (GVWR) (lb.) (4x2/4x4)	7000/7300 (4.6L V8); 7100/7300 (5.7L V8)	7100/7300	7100/7300
Gross Combined Weight Rating (GCWR) (lb.) (4x2/4x4)	16,960/17,200 (4.6L V8); 17,080/17,280 (5.7L V8)	17,080/17,280	17,080/17,280
Towing capacity <sup>7</sup> (lb.) (4x2/4x4)	6900/6600 (4.6L V8); 7400/7100 (5.7L V8)	7300/7100	7200/7000
Cargo volume <sup>8</sup> (cu. ft.) (behind front/second-row/third-row seats)	120.1/66.6/18.9	120.1/66.6/18.9	120.1/66.6/18.9
Fuel tank (gal.)	26.4	26.4	26.4
<b>TIRES</b>			
Size: P275/65R18; P275/55R20	Standard; Available	NA; Standard	NA; Standard
Type: Mud-and-Snow-rated radials	Standard	Standard	Standard
Spare: full-size, mounted under body	Standard	Standard	Standard
<b>MILEAGE ESTIMATES (mpg city/highway)<sup>9</sup></b>			
4.6L (4x2; 4x4)	14/20; 14/19	NA	NA
5.7L (4x2; 4x4)	14/18; 13/18	14/18; 13/18	14/18; 13/18

See numbered footnotes in Disclaimers section.

## Features<sup>10</sup>


EXTERIOR	SR5	LIMITED	PLATINUM		SR5	LIMITED	PLATINUM
Multi-reflector halogen headlamps with auto-off feature and headlamp cleaners	S	S	S	18-in. alloy wheels with P275/65R18 tires	S	—	—
Integrated fog lamps	S	S	S	20-in. Sport alloy wheels with P275/55R20 tires	P	—	—
Chrome grille surround	S	S	S	20-in. alloy wheels with P275/55R20 tires	—	S	—
Color-keyed grille surround	P	—	—	20-in. diamond-cut-finish alloy wheels with P275/55R20 tires	—	—	S
Color-keyed power heated outside mirrors	S	—	—	Washer-linked variable intermittent windshield wipers	S	S	S
Chrome power auto-dimming heated outside mirrors with power folding feature and turn signal indicators	—	S	—	Windshield wiper de-icer	S	S	S
Chrome power auto-dimming heated outside mirrors with power folding, reverse tilt-down and memory features, turn signal indicators and puddle lamps	—	—	S	High Solar Energy-Absorbing (HSEA) tinted glass	S	S	S
Color-keyed door handles	S	—	—	Privacy glass on rear side, quarter and liftgate windows	S	S	S
Chrome door handles	—	S	S	Power liftgate with jam protection	—	S	S
Multi-Mode 4WD system with Torsen <sup>®5</sup> limited-slip center differential with locking feature	O	O	O	Color-keyed rear spoiler with LED center high-mount stop lamp	S	S	S
Engine and transfer case skid plate (transfer case 4x4 only)	S	S	S	Roof rack	S	S	S
Power tilt/slide moonroof with sunshade	S	S	S	Running boards	S	S	S
				Front and rear mudguards	S	S	S
				Tow hitch receiver and wiring harness with 4/7-pin connector <sup>7</sup>	S	S	S
INTERIOR							
Three-zone automatic front and rear climate control with air filter	S	S	S	Dynamic Laser Cruise Control (DLCC) <sup>18</sup>	—	—	S
AM/FM CD player with MP3/WMA playback capability, eight speakers, XM <sup>®</sup> Radio <sup>11</sup> (includes 90-day trial subscription), auxiliary audio jack, USB <sup>12</sup> port with iPod <sup>®13</sup> connectivity, hands-free phone capability and music streaming via Bluetooth <sup>®14</sup> wireless technology	S	—	—	Leather-trimmed tilt/telescopic steering wheel with audio and Bluetooth <sup>®14</sup> hands-free phone controls	S	—	—
JBL Synthesis <sup>®</sup> AM/FM 6-disc CD changer with MP3/WMA playback capability, 14 speakers including subwoofer, XM <sup>®</sup> Radio <sup>11</sup> (includes 90-day trial subscription), auxiliary audio jack, USB <sup>12</sup> port with iPod <sup>®13</sup> connectivity, hands-free phone capability and music streaming via Bluetooth <sup>®14</sup> wireless technology	—	S	—	Leather-trimmed tilt/telescopic steering wheel with audio, climate and Bluetooth <sup>®14</sup> hands-free phone controls	—	S	—
Voice-activated touch-screen DVD navigation system <sup>15</sup> with integrated backup camera; <sup>16</sup> JBL Synthesis <sup>®</sup> AM/FM 4-disc CD changer with MP3/WMA playback capability, 14 speakers including subwoofer, XM <sup>®</sup> Radio <sup>11</sup> with XM NavTraffic <sup>®15</sup> (includes 90-day trial subscriptions), auxiliary audio jack, USB <sup>12</sup> port with iPod <sup>®13</sup> connectivity, hands-free phone capability and music streaming via Bluetooth <sup>®14</sup> wireless technology	—	O	S	Leather-trimmed power tilt/telescopic steering wheel with memory, wood-grain-style trim inserts, and audio, climate and Bluetooth <sup>®14</sup> hands-free phone controls	—	—	S
Multi-Information Display with outside temperature, compass, current and average fuel consumption, and fuel range functions	S	S	S	Analog instrumentation with speedometer, tachometer, LCD odometer, twin tripmeters and fuel gauge; and airbag, seatbelt, low fuel level, door-ajar, battery, check engine, oil and brake warning lights	S	—	—
Rear-seat DVD entertainment system with 9-inch display, two wireless headphones; <sup>17</sup> wireless remote and rear audio system with 115V AC power outlet and RCA jacks	—	O	S	Optitron instrumentation with speedometer, tachometer, LCD odometer, twin tripmeters and fuel gauge; and airbag, seatbelt, low fuel level, door-ajar, battery, check engine, oil and brake warning lights	—	S	S
Fabric-trimmed 8-way power-adjustable driver's seat; 4-way adjustable front passenger seat	S	—	—	Multi-function remote keyless entry system	S	S	S
Leather-trimmed and heated 10-way power-adjustable driver's seat; 4-way power-adjustable front passenger seat	P	S	—	Power windows with driver and front passenger one-touch auto up/down with jam protection	S	S	S
Perforated leather-trimmed heated and ventilated 12-way power-adjustable driver's seat with power thigh and lumbar support; 4-way power-adjustable front passenger seat	—	—	S	Second- and third-row retractable sunshades	—	S	S
Fabric-trimmed 40/20/40 split, sliding, reclining, fold-flat second-row seat with one-touch access to third-row seat	S	—	—	Power sliding rear window with auto up/down and jam protection, electric defogger and intermittent wiper	S	S	S
Leather-trimmed 40/20/40 split, sliding, reclining, fold-flat second-row seat with one-touch access to third-row seat	P	S	—	Power door locks with shift-linked automatic lock/unlock feature	S	S	S
Perforated leather-trimmed second-row heated captain's chairs with multi-function center console	—	—	S	Auto-dimming rearview mirror with compass, maplights and HomeLink <sup>®19</sup> universal transceiver	—	—	S
Fabric-trimmed 60/40 split, reclining, fold-flat third-row seat	S	—	—	Auto-dimming rearview mirror with integrated backup camera monitor; <sup>16</sup> compass, maplights and HomeLink <sup>®19</sup> universal transceiver	P	S	—
Leather-trimmed 60/40 split, power reclining, power fold-flat third-row seat	P	S	—	Overhead console with dual storage areas and driver and front passenger maplights	S	S	S
Perforated leather-trimmed 60/40 split, power reclining, power fold-flat third-row seat	—	—	S	Multi-function center console with front and rear dual cup holders, dual 12V auxiliary power outlets, sliding covered armrest and large storage compartment	S	S	S
Stain-resistant fabric coating	S	—	—	Cargo area 12V auxiliary power outlet and grocery bag hooks	S	S	S
7-passenger seating with second-row captain's chairs	P	O	—	Dual extendable sun visors with vanity mirrors	S	—	—
Cruise control	S	S	S	Dual extendable sun visors with illuminated vanity mirrors and secondary visors	—	S	S
				16 (18 on Platinum) cup and bottle holders (total)	S	S	S
				Illuminated entry system	S	S	S
				Digital quartz clock	S	S	S
				Maplights/personal lamps	S	S	S
				Remote hood and fuel-filler door releases	S	S	S

See numbered footnotes in Disclaimers section.



## Features (continued)

### SAFETY AND CONVENIENCE

	SR5	LIMITED	PLATINUM		SR5	LIMITED	PLATINUM
 Star Safety System™ — includes Vehicle Stability Control (VSC) <sup>20</sup> , Traction Control (TRAC), Anti-lock Brake System (ABS), Electronic Brake-force Distribution (EBD), Brake Assist (BA) <sup>6</sup> and Smart Stop Technology (SST) <sup>21</sup>	S	S	S	LATCH (Lower Anchors and Tethers for CHildren) includes lower anchors on all second-row seats and tether anchors on all second-row seats and the middle seat in the third row	S	S	S
	S	S	S	Child-protector rear door locks and power window lockout	S	S	S
Driver and front passenger Advanced Airbag System <sup>22</sup>	S	S	S	Front energy-absorbing crumple zone	S	S	S
Driver and front passenger seat-mounted side airbags, driver and front passenger knee airbags and all-row side curtain airbags <sup>22</sup> (4x2 only)	S	S	S	Side-impact door beams	S	S	S
Driver and front passenger seat-mounted side airbags, driver and front passenger knee airbags and all-row Roll-Sensing side Curtain Airbags (RSCA) <sup>22</sup> with cutoff switch <sup>23</sup> (4x4 only)	S	S	S	Energy-dissipating interior trim	S	S	S
Driver and front passenger seatbelt warning sensor	S	S	S	Tire Pressure Monitor System (TPMS) <sup>24</sup>	S	S	S
3-point seatbelts for all seating positions; driver-side Emergency Locking Retractor (ELR) and Automatic/Emergency Locking Retractor (ALR/ELR) on all passenger belts	S	S	S	Daytime Running Lights (DRL) with on/off feature	S	S	S
Driver and front passenger seatbelt pretensioners with force limiters	S	S	S	Anti-theft system with engine immobilizer <sup>25</sup>	S	S	S
				Front and rear parking assist sonar	—	S	S

S = Standard    O = Optional    — = Not Available    P = Feature is available as part of an option package.

## Packages and Options

### SR5

**Sport Package** — includes 20-in. super chrome-finish alloy wheels, color-keyed grille surround and 7-passenger seating with second-row captain's chairs

**Premium Package** — includes leather-trimmed and heated 10-way power-adjustable driver's seat; 4-way power-adjustable front passenger seat; leather-trimmed 40/20/40 split, sliding, reclining, fold-flat second-row seat with one-touch access to third-row seat; leather-trimmed 60/40 split, power reclining, power fold-flat third-row seat; and auto-dimming rearview mirror with integrated backup camera monitor,<sup>16</sup> compass, maplights and HomeLink<sup>®19</sup> universal transceiver

### LIMITED

Voice-activated touch-screen DVD navigation system<sup>15</sup> with integrated backup camera,<sup>16</sup> JBL Synthesis<sup>®</sup> AM/FM 4-disc CD changer with MP3/WMA playback capability, 14 speakers including subwoofer, XM<sup>®</sup> Radio<sup>11</sup> with XM NavTraffic<sup>®15</sup> (includes 90-day trial subscriptions), auxiliary audio jack, USB<sup>12</sup> port with iPod<sup>®13</sup> connectivity, hands-free phone capability and music streaming via Bluetooth<sup>®14</sup> wireless technology

7-passenger seating with second-row captain's chairs

Rear-seat DVD entertainment system with 9-inch display, two wireless headphones,<sup>17</sup> wireless remote and rear audio system with 115V AC power outlet and RCA jacks

### WARRANTIES

Every Toyota Car, Truck and SUV is built to exceptional standards. And that's not idle boasting. We back it up with these Limited Warranty Coverages:

**Basic:** 36 months/36,000 miles (all components other than normal wear and maintenance items).

**Powertrain:** 60 months/60,000 miles (engine, transmission/transaxle, drive system, seatbelts and airbags).

**Rust-Through:** 60 months/unlimited miles (corrosion perforation of sheet metal).

**Emissions:** Coverages vary under Federal and California regulations. Refer to applicable *Warranty and Maintenance Guide* for details.

**Accessories:** For Genuine Toyota accessories purchased at the time of the new vehicle purchase, the Toyota Accessory Warranty coverage is in effect for 36 months/36,000 miles from the vehicle's in-service date, which is the same coverage as the Toyota New Vehicle Limited Warranty.

For Genuine Toyota accessories purchased after the new vehicle purchase the coverage is 12 months, regardless of mileage, from the date the accessory was installed on the vehicle, or the remainder of any applicable new vehicle warranty, whichever provides greater coverage, with the exception of car covers. Car covers are warranted for 12 months from the date of purchase and do not assume any coverage under the Toyota New Vehicle Limited Warranty.

You may be eligible for transportation assistance if it's necessary that your vehicle be kept overnight for repairs covered under warranty. Please see your authorized Toyota dealership for further details.

For complete details about Toyota's warranties, please visit [www.toyota.com](http://www.toyota.com), refer to the applicable *Warranty and Maintenance Guide* or see your Toyota dealer.

## TOYOTA CARE



**ToyotaCare**

Covers normal factory scheduled service. Plan is 2 years or 25K miles, whichever comes first. The new Toyota vehicle cannot be part of a rental or commercial fleet, or a livery or taxi vehicle. See plan for complete coverage details. See participating Toyota dealer for details.

## DISCLAIMERS

**1.** Platinum models only. **2.** Extra-cost color. **3.** Not available on Platinum models. **4.** Flex Fuel Vehicles not available in every state. In states where available, all 5.7L V8 4x4 models are FFV. Flex Fuel Vehicles use E85, gasoline or a combination of both. Estimated mileage will vary. Consult your dealer for nearest E85 filling stations or see [toyota.com](http://toyota.com) for further details. **5.** Torsen® is a registered trademark of Zexel Torsen, Inc. **6.** Brake Assist is designed to help the driver take full advantage of the benefits of ABS. It is not a substitute for safe driving practices. Braking effectiveness also depends on proper brake-system maintenance and tire and road conditions. **7.** Before towing, confirm your vehicle and trailer are compatible, hooked up and loaded properly and that you have any necessary additional equipment. Do not exceed any Weight Ratings and follow all instructions in your *Owner's Manual*. The maximum you can tow depends on the total weight of any cargo, occupants and available equipment. Calculated with new SAE J2807 method. **8.** Cargo and load capacity limited by weight and distribution. **9.** 2011 EPA-estimated mileage. Actual mileage will vary. **10.** Toyota strives to build vehicles to match customer interest and thus they typically are built with popular options and option packages. Not all options/packages are available separately and some may not be available in all regions of the country. See [toyota.com](http://toyota.com) for information about options/packages commonly available in your area. If you would prefer a vehicle without any or with different options, contact your dealer to check for current availability or the possibility of placing a special order. **11.** XM services require a subscription after 90-day trial period. Subscriptions governed by XM Customer Agreement available at [xmradio.com](http://xmradio.com). **If you decide to continue your XM service at the end of your complimentary trial, the plan you choose will automatically renew and bill at then-current rates unless you call 1-800-967-2346 to cancel.** Fees and programming subject to change. Available only to those at least 18 years of age in the 48 contiguous United States and D.C. **12.** May not be compatible with all MP3/WMA players and like models. **13.** iPod® is a registered trademark of Apple, Inc. All rights reserved. **14.** The Bluetooth® word mark and logos are registered trademarks owned by Bluetooth SIG, Inc. and any use of such marks by Toyota is under license. Other trademarks and trade names are those of their respective owners. The Bluetooth® wireless technology phones listed on [toyota.com](http://toyota.com) have been tested for compatibility with Toyota vehicles. Performance will vary based on phone software version, coverage and your wireless carrier. Phones are warranted by their manufacturer, not Toyota. **15.** Availability and accuracy of the information provided by the navigation system or any XM services mentioned (if installed) are dependent upon many factors. Use common sense when relying on information provided. Services not available in every city or roadway. Periodic navigation updates available at additional cost. See your *Navigation System Owner's Manual* or contact XM for details. **16.** The backup camera does not provide a comprehensive view of the rear area of the vehicle. You should also look around outside your vehicle and use your mirrors to confirm rearward clearance. Cold weather will limit effectiveness and view may become cloudy. **17.** Headphones are for passenger use only. Do not use while operating vehicle. **18.** Dynamic Laser Cruise Control is designed to assist the driver and is not a substitute for safe and attentive driving practices. Please see your *Owner's Manual* for important instructions and cautions. **19.** HomeLink® is a registered trademark of Johnson Controls, Inc. **20.** Vehicle Stability Control (VSC) is an electronic system designed to help the driver maintain vehicle control under adverse conditions. It is not a substitute for safe driving practices. Factors including speed, road conditions and driver steering input can all affect whether VSC will be effective in preventing a loss of control. Please see your *Owner's Manual* for further details. **21.** Smart Stop Technology operates only in the event of certain simultaneous brake and gas pedal applications. When engaged, the system will reduce engine power to help the brakes bring the vehicle to a stop. Factors including speed, road conditions and driver input can all impact stopping distance. Smart Stop Technology is not a substitute for safe and attentive driving and does not guarantee instant stopping. Please see your *Owner's Manual* for further details. **22.** All the airbag (AB) systems are Supplemental Restraint Systems. All ABs (if installed) are designed to inflate only under certain conditions and in certain types of severe collisions: frontal and knee ABs typically inflate in frontal collisions; side and side curtain ABs in side collisions; Roll-Sensing Curtain ABs at a severe tilt degree, roll or lateral G-force. In all other accidents, the ABs will not inflate. To decrease the risk of injury from an inflating AB, always wear seatbelts, sit upright in the middle of the seat as far back as possible and do not lean against the door. Do not put objects in front of an AB or around the seatback. Do not use a rearward-facing child seat in any front passenger seat. The force of an inflating AB may cause serious injury or death. See your *Owner's Manual* for further information/warnings. **23.** Do not use rearward-facing child seats in any front passenger seat without switching off the passenger-side airbag. Please see your *Owner's Manual* for details. **24.** The Toyota Tire Pressure Monitor alerts the driver when tire pressure is critically low. For optimal tire wear and performance, tire pressure should be checked regularly with a gauge; do not rely solely on the monitor system. See your *Owner's Manual* for details. **25.** The engine immobilizer is a state-of-the-art anti-theft system. When you insert your key into the ignition switch, the key transmits an electronic code to the vehicle. The engine will only start if the code in the transponder chip inside the key matches the code in the vehicle's immobilizer. Because the transponder chip is embedded in the key, it can be costly to replace. If you lose a key, your Toyota dealer can help, or you can find a qualified independent locksmith to replace your key or perform high-security key services at [www.aloa.org](http://www.aloa.org)

Toyota Sequoia is designed to meet most off-road driving requirements. Abusive use may result in bodily harm or damage. Toyota encourages responsible operation to protect you, your vehicle and the environment. Seatbelts should be worn at all times. Please do not allow passengers to ride in the cargo area. Towing hitch receivers/ball mount kits are not intended to provide crash protection.

For details on vehicle specifications, standard features and available equipment in your area, contact your Toyota dealer. A vehicle with particular equipment may not be available at the dealership. Ask your Toyota dealer to help locate a specifically equipped vehicle.

All information presented herein is based on data available at the time of posting, is subject to change without notice and pertains specifically to mainland U.S.A. vehicles only. Prototypes shown. Actual production vehicles may vary.



For Toyota Mobility program details, go to [www.toyota.com/mobility](http://www.toyota.com/mobility) or call the Toyota Customer Assistance Center at 1-800-331-4331

