



VOLVO  
**S60** 2004

**VOLVO**  
for life





THE VOLVO S60.  
IT'S A DIRECTION. IT'S A PROMISE. IT'S A PASSION.  
DRIVE IT AND YOU WILL UNDERSTAND.

VOLVO S60	2
DESIGNED EMOTION	4
COMFORT. LUXURY. EXHILARATION.	6
ENGINEERED EMOTION	10
SAFETY – OUR FIRST PRIORITY	12
VOLVO SAFETY SYSTEMS/ PERSONAL SECURITY	14
VOLVO S60 R	16
CARE FOR THE ENVIRONMENT	18
YOUR CHOICES	20

**[WWW.VOLVOCARS.US](http://WWW.VOLVOCARS.US)**





## **VOLVO S60**

FOR SOME, IT'S ONE OF THE WORLD'S MOST SPIRITED DRIVING EXPERIENCES. OTHERS SIMPLY ENJOY THE SUPERIOR FEEL OF TOTAL CONTROL AND REFINED LUXURY. EVERYONE OUTSIDE THE CAR CAN SAVOR THE AWARD WINNING DESIGN. BASICALLY, IT ALL COMES DOWN TO THE ESSENCE OF A GENUINE EUROPEAN SPORTS SEDAN, A FACT THAT WILL BE EVEN MORE OBVIOUS ONCE YOU TAKE TO THE ROAD AND EXPERIENCE THE POWER OF



TURBOCHARGED HORSES. THE VIGOROUS AND WELL-BALANCED CHASSIS ALLOWS YOU TO ENJOY EVERY CURVE TO THE FULLEST. AND JUST KNOWING THAT YOU'RE SURROUNDED BY VOLVO'S LEGENDARY SAFETY, WITH SPACE FOR YOUR LOVED ONES (AND THEIR LUGGAGE), SIMPLY ADDS TO THE PLEASURE. AFTER ALL, IT IS A VOLVO.





## DESIGNED EMOTION

THE POWERFUL STANCE. A MUSCULAR YET SLEEK BODY. IT'S A FOUR-DOOR SPORTS SEDAN, BUT MOVES YOU WITH THE LOOKS OF A COUPE. AGILITY IS EMPHASIZED BY GENUINE CAB FORWARD ARCHITECTURE TO CONNOTE THE SPIRIT OF A JET FIGHTER, AERODYNAMICALLY SCULPTED TO KNIFE THROUGH THE AIR WITH A .28 DRAG COEFFICIENT. A DISTINCTIVE FRONT AND A V-SHAPED HOOD WITH LINES FLOWING OVER THE BROAD SHOULDERS – NO DOUBT IT'S A VOLVO. MOST OF ALL: YOU CAN REST ASSURED THAT WHAT'S INSIDE DELIVERS WHAT THE OUTSIDE PROMISES.



## COMFORT. LUXURY. EXHILARATION

PASSION STARTS THE MOMENT YOU TAKE YOUR PLACE BEHIND THE WHEEL. THE ERGONOMICALLY DESIGNED DRIVER'S SEAT IS ONE OF THE MOST COMFORTABLE IN THE AUTOMOTIVE WORLD. A QUICK GLANCE AT THE INSTRUMENTS GIVES YOU ALL THE DRIVING INFORMATION YOU NEED. ALL COCKPIT DETAILS ARE METICULOUSLY ENGINEERED TO GIVE YOU CONTROL AND INSTANTANEOUS FEEDBACK. THE STEERING WHEEL AND POWER ADJUSTABLE DRIVER'S SEAT\* EASILY ADJUST TO YOUR EXACT PREFERENCES. THE ZONE-TINTED WINDSHIELD REDUCES THE RISK OF BEING DAZZLED BY THE SUN AND ADDS TO THE INTERIOR CLIMATE COMFORT.

\*Optional 2.4



### OPTIONS AND ACCESSORIES

Volvo invites you to personalize the interior of your S60. You can maximize the experience with one or more of Volvo's attractive option packages. There's sumptuous leather for the seats, steering wheel and parking brake lever. You can add a power passenger seat, heated front seats, a hands-free telephone system,\*\*

or the Volvo Navigation System. And with Volvo's most sophisticated audio system, with 13 Premium Sound speakers, a 225 W amplifier and Dolby Pro-Logic®, you will enjoy a listening experience far beyond the ordinary.

\*\* Retailer installed accessory.







#### **SPORTINESS, CONSIDERATION AND PRACTICAL INTELLIGENCE**

The cabin is among the most spacious in its class. You are surrounded by harmonious textures and colors. All the seats offer superior comfort and feature head restraints and three-point seat belts with pre-tensioners. The rear head restraints fold at the touch of a button to increase rear vision when reversing. The Dual Zone Electronic Climate Control system\* (ECC) maintains an ideal cabin temperature and can be set individually for the driver and passenger sides. A built-in cabin air filter prevents dust, pollen and fumes from entering the cabin. Add an Interior Air Quality System, and the air you breathe inside the car is actually cleaner than the air outside. The airiness of the cabin is further enhanced by the optional moonroof. And when you need extra load capacity, simply fold down the split rear seat or both the rear and front passenger seats.

\* Optional 2.4



Smart and considerate details that emphasize comfort – whether you are behind the wheel or just along for the ride.



Adjustable air vents for the rear-seat passengers enhance comfort and help keep mist off the side windows.



Your jacket is within easy reach without obscuring your vision.

## ENGINEERED EMOTION

DRIVING A VOLVO S60 MAY EASILY TURN OUT TO BE A LONG-LASTING, LOVE AFFAIR. THE BALANCE, THE STABILITY, THE RESPONSE – THE CAR REACTS IMMEDIATELY TO YOUR EVERY COMMAND WITH NO UNEXPECTED SURPRISES. AND THE FIVE-CYLINDER 247-BHP T5 TURBO ENGINE IS MORE THAN WILLING TO SET THE PACE. SO EXPECT WORLD-CLASS ON-ROAD ENJOYMENT – DAY AFTER DAY, SMILE AFTER SMILE.



### AGILE CHASSIS

The multi-link rear suspension maintains nearly constant wheel angles and track width. It provides you with both excellent riding comfort and well-balanced, consistent handling.



### POWERFUL BRAKE SYSTEM

An anti-lock braking system featuring EBD (Electronic Brake Distribution) is always at your disposal. Braking power is automatically distributed between the front and rear wheels for quick, sure stops regardless of the car's load. And if you choose the DSTC (Dynamic Stability and Traction Control) anti-skid system, EBA (Electronic Brake Assistance) helps shorten the braking distance in emergency situations.



### GEARED TO SPORT

Power is in your hands. The smooth and distinct five-speed manual gearbox offers you the most active driving experience. Or choose the refined Geartronic five-speed adaptive automatic transmission, which also allows manual shifting when you're in the mood.

The low center of gravity and even weight distribution contribute to stable road behavior. Add an extremely torsionally rigid body and one of the most refined chassis in the automotive world – and the result is exceptionally good roadholding. Front-wheel drive and independent front wheel suspension have been combined with a sophisticated multi-link

rear suspension. The result is stable and predictable roadholding and – not least – first-class riding comfort. And to add yet another dimension to your driving experience, there's the capable all-wheel drive Volvo S60 AWD. It offers one of the most advanced all wheel drive systems available today – and it will give you the superb feeling of total control.





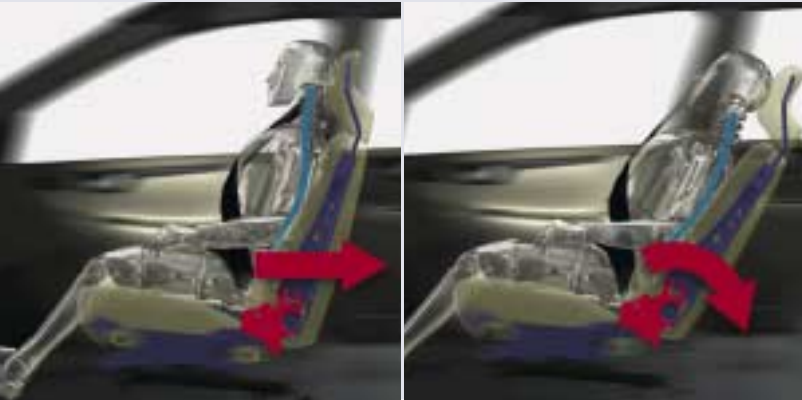
“CARS ARE DRIVEN BY PEOPLE. THE GUIDING PRINCIPLE  
BEHIND EVERYTHING WE MAKE AT VOLVO, THEREFORE,  
IS – AND MUST REMAIN – SAFETY.”

ASSAR GABRIELSSON AND GUSTAF LARSON,  
THE FOUNDERS OF VOLVO.



## SAFETY – OUR FIRST PRIORITY

VOLVO. SAFETY. THE WORDS ARE NEARLY SYNONYMOUS, AS WELL THEY SHOULD BE, BECAUSE SAFETY IS THE VERY ESSENCE OF WHO WE ARE AND WHAT WE DO. FROM SOPHISTICATED SYSTEMS THAT HELP YOU AVOID ACCIDENTS TO THOSE THAT HELP TO MINIMIZE INJURIES SHOULD ONE OCCUR, VOLVO IS COMMITTED TOWARDS HELPING PROTECT YOU, YOUR LOVED ONES, AND THOSE WITH WHOM YOU SHARE THE ROAD OF LIFE.



### WHIPLASH PROTECTION SEATING SYSTEM

Rear-end collisions can result in serious neck injuries, even at low speeds. Volvo's Whiplash Protection System (WHIPS) is built into the front seats. If the car is struck from behind at sufficient speed, the system helps absorb the force and significantly reduces stress to the neck and spine.

In a Volvo S60, safety is built in from the very start. An advanced chassis and powerful brakes help you maintain control in all situations. Active stability systems increase the margins of safety still further, for instance if you are driving on slippery roads or are forced to take sudden evasive action. The STC (Stability and Traction Control) anti-spin



### SIDE-IMPACT PROTECTION SYSTEM

In 25 percent of all major collisions, the impact is from the side. Volvo's patented Side-Impact Protection System (SIPS) helps reduce the risk of serious injury. Side members, roof pillars, the roof, doors, and cross-members in the floor and dash-board are specially reinforced. The system works in conjunction with side airbags fitted in the front seats and IC – inflatable head-protection curtains concealed in the headliners along both sides of the car.

system ensures that the driven wheels get just the right amount of power so that they retain a firm grip on the road. If the vehicle shows any tendency to start skidding, optional DSTC\* (Dynamic Stability and Traction Control) instantly applies the brakes to one or more wheels to help you stabilize the vehicle and regain control.

\*Standard T5

# VOLVO SAFETY SYSTEMS

AT VOLVO, WE BELIEVE THAT IT'S THE WHOLE RATHER THAN THE PARTS THAT DETERMINES HOW SAFE A CAR IS. THE S60 IS VERY MUCH THE PRODUCT OF THIS BELIEF – EVERYTHING WORKS TOGETHER HARMONIOUSLY TO HELP KEEP YOU OUT OF HARM'S WAY.

**DEFORMATION ZONES**  
Front and rear deformation areas help dissipate collision forces before they can reach the passenger compartment.

**SAFETY CAGE**  
A high-strength steel safety cage surrounds the occupants of the car.

**COLLAPSIBLE THREE-STAGE STEERING COLUMN**  
In the event of a frontal collision, the steering column is designed to collapse and help prevent injuries to the driver.

**DUAL-STAGE AIR BAGS**  
These latest-generation "smart" air bags sense collision force and adjust inflation accordingly.



**ENERGY-ABSORBING INTERIOR**  
All the panels and the sides of the doors are padded with energy-absorbing materials to help reduce the risk of injury to the car's occupants.

**ANTI-SUBMARINING SEATS**  
Front and rear seats are shaped to help keep occupants from sliding under and out of their seat belts during a collision.

**WHIPLASH PROTECTION SYSTEM (WHIPS)**  
If the vehicle is struck from behind, this front-seat system is designed to reduce the violent transfer of energy that often results in serious neck and back trauma.



## PERSONAL SECURITY

AT VOLVO, PROVIDING FOR YOUR PERSONAL SAFETY IS A NATURAL EXTENSION OF OUR DEVOTION TO YOUR DRIVING SAFETY. AND SO, A NUMBER OF CRITICAL FEATURES HAVE BEEN ADDED TO THE S60 TO HELP YOU AVOID THREATENING SITUATIONS.



#### **SIDE-IMPACT AIR BAGS**

Side airbags offer chest protection. They are fitted in the outer edge of the front seat backrests, not in the doors, so that they are always by your side.

#### **SIDE-IMPACT PROTECTION SYSTEM (SIPS)**

Volvo's unique side-impact protection system uses a large part of the car's body to absorb the force of an impact. The IC (Inflatable Curtain) and side airbags help to protect the head and chest.

#### **INFLATABLE CURTAIN (IC)**

Curtains inflate in a side-impact accident to help protect the heads of the outboard occupants of the car. For added safety during multiple collisions, they stay inflated for up to three seconds.



#### **SEAT BELTS WITH PRE-TENSIONERS**

All five seats have head restraints and three-point seat belts with pre-tensioners. In a collision, the seat belts are pulled taut to help keep passengers properly positioned. The front seat belts then slacken slightly so that the occupant is cushioned by the airbag in a controlled way.

#### **ISOFIX COMPLIANT**

This attachment system ensures quick and correct installation and removal of safety seats for children in the rear seat's outboard positions.

#### **PROTECTED FUEL TANK**

The fuel tank is strategically placed in front of the rear axle, which helps protect it in the event of a rear-end collision.

The S60 expands the scope of personal protection. Approach and Home Safe lighting with ground lighting in outer side view mirrors illuminates the area around the car and allows greater safety when approaching or departing the vehicle. An electronic immobilizer and

door locks that withstand most break-in attempts help protect against theft. A security system with sensors in the doors, hood and trunk activate an alarm if someone should ever try to break into the vehicle. And in the event of trouble – press the panic button in

the remote control and the alarm is sounded. For an even higher level of personal safety you can add anti-smash and grab laminated side windows and HomeLink remote garage door opener (included in the Touring Package).



**THREE HUNDRED HORSES. ACTIVE PERFORMANCE CHASSIS WITH FOUR-C TECHNOLOGY.  
ELECTRONICALLY-CONTROLLED ALL-WHEEL DRIVE. BREMBO BRAKES ...**

YES, THERE'S PLENTY TO EXCITE YOU IN THE NEW VOLVO S60 R. OR HOW ABOUT SWAPPING RELAXED CRUISING FOR REALLY AWESOME DRIVING WITH A FLICK OF A SWITCH? YOU'LL FIND OUT MORE IN THE SEPARATE BROCHURE AND AT [WWW.VOLVOCARS.COM](http://WWW.VOLVOCARS.COM).



## CARE FOR THE ENVIRONMENT

CARING FOR THE ENVIRONMENT IS IMPORTANT TO YOU AND TO VOLVO. REST ASSURED THAT THE LATEST ENGINE TECHNOLOGY AND ANTI-POLLUTION ENGINEERING HAVE BEEN BROUGHT TOGETHER TO SET HIGH ENVIRONMENTAL STANDARDS – FOR YOU, YOUR FAMILY, AND FOR THE GOOD OF EVERYONE.

### FUEL ECONOMY AND EMISSIONS

The engines are crafted of lightweight aluminum and feature Volvo's latest low-friction technology for good fuel efficiency while providing excellent overall performance. Continuously variable valve timing (CVVT) and three-way catalytic converters allow certain S60 models to meet or exceed stringent Ultra Low Emission Vehicle (ULEV) standards.

### RECYCLABLE

Nearly all of the sheet metal and other metals in the S60 can be recycled. In fact, about 85 percent of the vehicle's total weight is recyclable.

### INSIDE AIR

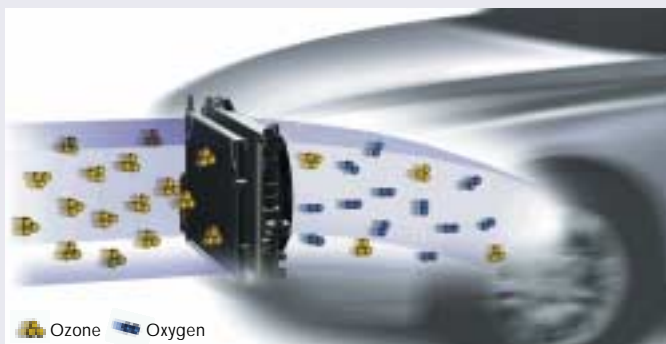
The optional Interior Air Quality System (IAQS) removes pollen and unpleasant odors from incoming air. If pollutants are detected outside the vehicle, interior air is temporarily recirculated to maintain air quality.

### CERTIFIED MATERIALS

All interior fabrics and leather have been rigorously tested to ensure that they are free from hazardous and allergenic substances. Leathers are tanned using natural plant materials.

### CLEANS AS YOU DRIVE

Ozone, so important to the planet's health, is actually a pollutant when found at ground level. The radiator of the S60 has a special coating, PremAir®, which converts up to 75 percent of the ozone it encounters into oxygen – so you actually help clean the air when you drive. In addition, the S60 is finished with water-based paints. This results in clean air both inside and outside the factory.



PremAir® helps reduce ground level ozone as you drive – an important part of Volvo's global environmental commitment.

PremAir® is a registered trademark of Engelhard Corporation.









## YOUR CHOICES

CHOOSING THE VOLVO S60 IS A HIGHLY PERSONAL MATTER. YOUR VOLVO IS AVAILABLE IN A NUMBER OF MODELS, EACH WITH ITS OWN ENGINE, POWERTRAIN, AND EQUIPMENT LEVEL. THIS MAKES IT EASY TO CHOOSE THE S60 THAT'S JUST RIGHT FOR YOU. AND WHATEVER MODEL YOU CHOOSE, YOU CAN ENHANCE THE EXPERIENCE WITH ONE OR MORE OF VOLVO'S OPTION PACKAGES AND SPECIALLY-DESIGNED OPTIONS AND ACCESSORIES.

THE S60 SELECTION	22
STANDARD FEATURES	24
OPTION PACKAGES	25
FACTORY-INSTALLED OPTIONS	26
ACCESSORIES	27
INTERIOR SELECTIONS	28
EXTERIOR SELECTIONS	32
TECHNICAL SPECIFICATIONS	33
CARE BY VOLVO	35

**[WWW.VOLVOCARS.US](http://WWW.VOLVOCARS.US)**

## THE S60 SELECTION

IN A VOLVO S60, THE POWERTRAIN AND CHASSIS INTERACT TO PROVIDE A HARMONIOUS BALANCE BETWEEN RESPONSE AND COMFORT. THE SMOOTH, POWERFUL FIVE-CYLINDER ENGINE GIVES YOU INSTANT ACCESS TO ITS FULL POWER POTENTIAL. LOW INTERNAL FRICTION AND THE VERY LATEST ENGINE TECHNOLOGY, FEATURING VARIABLE VALVE TIMING, COMBINE GOOD PERFORMANCE WITH MODERATE FUEL CONSUMPTION, WHILE AT THE SAME TIME MEETING STRICT EMISSIONS STANDARDS.





# T5

## **VOLVO S60 T5 (247 HP)**

The most enticing front-wheel drive sport sedan that really inspires sporty driving. The turbocharged five-cylinder 2.3-liter engine generates very high torque over a wide range of engine speeds. The engine begins providing its full torque potential (243 ft./lbs.) at 2400 rpm. The high charge-air pressure in the turbo means extra power at high engine speeds. Variable valve timing on the exhaust side results in cleaner emissions in all driving conditions. This powerful engine is mated to a five-speed manual transmission with a "sport shifter" gear selector or an optional five-speed Geartronic automatic transmission. The T5 also features the DSTC anti-skid system and upgraded brakes.

# AWD

## **VOLVO S60 2.5T AWD (208 HP)**

Adds yet another dimension to your driving experience. Drive is continuously distributed between the front and rear wheels by the electronically controlled all-wheel drive-system (AWD). The system responds instantly, making it possible to balance understeering and oversteering tendencies with exceptional precision and maintain driving stability even under difficult conditions. Behind the wheel, you won't even notice when the AWD system engages and disengages – you'll simply enjoy the superb feeling of total control. The experience is further enhanced by the sophisticated 208-bhp five-cylinder light-pressure turbo engine, the five-speed adaptive automatic transmission, or optional five-speed Geartronic.

# 2.5 T

## **VOLVO S60 2.5T (208 HP)**

Provides a beautifully balanced and spirited driving experience. The five-cylinder 2.5-liter turbocharged engine gives you access to the engine's full torque (236 ft./lbs.) from as low as 1500 rpm – so you can start off quickly and will seldom need to shift down, for example when passing slower moving vehicles. The very latest advances in engine technology with variable valve timing for both inlet and exhaust valves ensure excellent performance and cleaner exhaust emissions under all driving conditions. With highly efficient combustion and emission control, this engine meets the strict ULEV emission requirements. A five-speed adaptive automatic transmission is standard, or select the optional five-speed Geartronic.

# 2.4

## **VOLVO S60 2.4 (168\* HP)**

A truly attractive and capable sport sedan with a 2.4-liter five-cylinder engine that inspires a more relaxed driving style. At the same time, you can enjoy fast, safe passing and – not least – unusually attractive fuel economy. Variable valve timing on the inlet side means spirited performance with smooth pulling power at all engine speeds. With highly efficient combustion and emission control, this engine meets the strict ULEV emission requirements. A crisp five-speed manual transmission comes as standard. As an option, you can choose the five-speed adaptive automatic transmission.

\*165-bhp in California.

# STANDARD FEATURES

SAFETY	S60 2.4	S60 2.5T	S60 2.5T AWD	S60 T5
Anti-Submarine Seats	●	●	●	●
Daytime Running Lights (Halogen Semi-Sealed with Replaceable Bulb)	●	●	●	●
Driver and Front Passenger Supplemental Restraint System – Dual-Threshold Air Bags	●	●	●	●
Dynamic Stability and Traction Control (DSTC)	○	○	○	●
Emergency Trunk Release	●	●	●	●
Five Padded Head Restraints	●	●	●	●
Homelink Remote Garage Door Opener	P	P	P	●
Immobilizer, Encrypted Ignition Key	●	●	●	●
Inflatable Side Curtain (IC)	●	●	●	●
ISOFIX Baby/Child Seat Attachment System	●	●	●	●
Overhead-Mounted Seat Belt Reminder Lights	●	●	●	●
Rear-Door Child-Safety Locks	●	●	●	●
Rear Fog Light with Auto-Off	●	●	●	●
Safe Approach and Home Safe Lighting	●	●	●	●
Seat Belts: Five, 3-Point Inertia-Reel Belts with Automatic Pretensioners; Front Belts have Height Adjustment	●	●	●	●
Security System	●	●	●	●
Side Impact Air Bags for Driver and Front Passenger (SIPS Bags II™)	●	●	●	●
Side Impact Protection System (SIPS)	●	●	●	●
Stability and Traction Control (STC)	●	●	–	●
Top-Tether Child Seat Anchorage Capability	●	●	●	●
Traction Control (TRACS)	–	–	●	–
Whiplash Protection Seating System (WHIPS)	●	●	●	●
<b>INTERIOR:</b>				
Aluminum Mesh Inlays	–	–	–	●
Auto-Dim Rearview Mirror (included in Touring Package for 2.4, 2.5T and 2.5T AWD)	P	P	P	●
Coin Box	●	●	●	●
Cruise Control	●	●	●	●
Cup Holders	●	●	●	●
Driver Seat with Manual Tilt, Recline and Adjustable Lumbar Support	●	–	–	–
Dual-Zone Electronic Climate Control (ECC) (included in Premium Package for 2.4)	P	●	●	●
Dual-Zone Manual Climate Control	●	–	–	–
Electric Folding Rear Head Restraints	●	●	●	●
Four Reading Lamps	●	●	●	●
Front Center Armrest	●	●	●	●
Front Door-Panel Storage Pockets	●	●	●	●
Front Seat-Back Storage Pockets	●	●	●	●
Heated Front Seats (included in Climate Package for 2.4, 2.5T and T5)	P	P	●	P
HU-613 Audio System with Cassette, Single In-Dash CD, 100-Watt Amplifier, Performance Speakers, Dual Diversity Antenna	●	●	●	●
Illuminated Lockable Glove Box	●	●	●	●
Illuminated Vanity Mirrors in Driver/Front Passenger Sun Visors	●	●	●	●
Interior Cabin Light Delay	●	●	●	●
Leather-trimmed Gearshift Knob	●	●	●	●
Leather-trimmed Parking Brake Handle	–	–	–	●
Leather-trimmed Steering Wheel	●	●	●	●
Luggage/Cargo Area Lights	●	●	●	●
Power-Adjustable Driver Seat, 8-Way with 3-Position Memory and Lumbar Support	P	●	●	●
Power-Adjustable Passenger Seat, 8-Way with Lumbar Support	–	P	P	●
Power Windows with Driver and Passenger Auto Up/Down with Anti-Trap Feature	●	●	●	●
Rear Cup Holders	●	●	●	●
Rear Seat Ventilation Outlets on B-Pillar	●	●	●	●
Rear Window Defroster with Automatic Timer	●	●	●	●
Simulated Wood Inlays (included in Premium Package for 2.4)	P	●	●	–
Split-Folding Rear Seat 60/40	●	●	●	●
Tilt/Telescopic Steering Wheel with Illuminated Cruise and Audio Controls	●	●	●	●
Trip Computer (included in Premium Package for 2.4, 2.5T and 2.5T AWD)	P	P	P	●
Two Entry Lights (in Front Door Foot Wells)	●	●	●	●
<b>EXTERIOR:</b>				
Central Power Door Locks with Remote Keyless Entry, Trunk and Fuel Filler Locks	●	●	●	●
Entry/Exit Lights in Outer Rearview Mirrors	●	●	●	●
Front Fog Lights (included in Sport Package for 2.4)	P	●	●	●
Headlamp Washers (included in Climate Package for 2.4, 2.5T and T5)	P	P	●	P
Outside Temperature Gauge	●	●	●	●
Pollen Filter for Passenger Compartment	●	●	●	●
Power-Adjustable Heated Exterior Rearview Mirrors	●	●	●	●
PremAir® Treated Radiator	●	●	●	●
Tinted Windows	●	●	●	●
Rainsensor (included in Climate Package for 2.4, 2.5T and T5)	P	P	●	P
2-Speed Windshield Wipers with Intermittent Cycle	●	●	●	●

● = Standard ○ = Option P = Package



## PREMIUM PACKAGE

A Volvo offers you long, relaxed drives and a more spirited everyday life. The Premium Package will provide you with some necessities for that extra ambience and convenience.

- Power glass moonroof
- Leather seating surfaces
- Power driver's seat w/memory (2.4)
- Electronic Climate Control ECC (2.4)
- Simulated wood trim (2.4)
- Trip computer (2.4, 2.5T, 2.5T AWD)
- Power passenger's seat (2.5T, 2.5T AWD)



## SPORT PACKAGE\*

Inspiring dynamics are always at hand, whenever you're in the mood. And with the Sport Package, you'll further enhance your driving experience.

### 2.4

- 16" URSA alloy wheels
- Front fog lights

### 2.5T AWD

- 17" THOR alloy wheels
- Sport seats
- Geartronic transmission

### 2.5T:

- 17" TETHYS alloy wheels
- Sport seats
- Geartronic transmission

### T5:

- 17" TETHYS alloy wheels
- Sport suspension

\*Requires Premium Package on 2.5T and 2.5T AWD.



## TOURING PACKAGE\*

The wide range of considerate and practical features makes life with your Volvo a truly enjoyable experience. And by adding the Touring Package, you expand your freedom even more.

- Homelink (2.4, 2.5T, 2.5T AWD)
- Auto dimming mirror (2.4, 2.5T, 2.5T AWD)
- Grocery bag holder
- Laminated side windows
- Internal Air Quality System IAQS

\*Requires Premium Package on 2.4.



## CLIMATE PACKAGE\*

In a Volvo you're always prepared to deal with the ever-changing forces of nature. And to increase comfort when driving in cold, rain or snow – simply add the Climate Package.

- Heated front seats
- Headlight washer/wipers
- Rain sensor

\*Standard in 2.5T AWD.

**DSTC ANTI-SKID SYSTEM (DYNAMIC STABILITY AND TRACTION CONTROL)**

Enhances driving stability on slippery roads. The system automatically counteracts a skid as it starts, well before you even notice. If there is any tendency to slide, the brakes are instantly applied to one or more wheels as necessary to retain control. The system also includes EBA (Electronic Brake Assistance) which helps shorten the stopping distance in emergency braking. Standard in the Volvo S60 T5.

**POWER GLASS MOONROOF\***

Makes the interior feel extra light and airy. Touch a button – and you open or close the moonroof. And if the sun is too strong, you can always close the built-in sun shade.

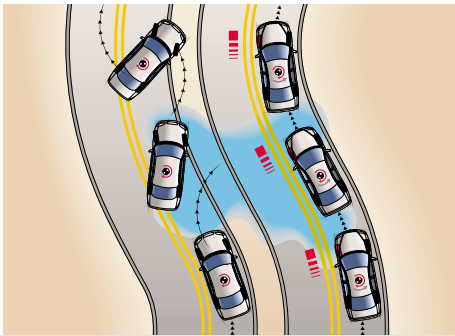
\*Included in the Premium Package.

**FIVE-SPEED ADAPTIVE AUTOMATIC TRANSMISSION**

Registers your driving style and adapts the gear shifting pattern accordingly. A special Winter mode makes it easier to start off – and keep moving – on slippery roads. Standard in the Volvo S60 2.5T and 2.5T AWD, available as option only in the Volvo S60 2.4.

**FIVE-SPEED GEARTRONIC TRANSMISSION**

Two gearboxes in one: an adaptive automatic for relaxed driving and a manual gearbox for more active driving. In Manual mode, you shift up by pushing the gear lever forwards, and down by pulling the lever toward you. Included in the Sport Package for Volvo S60 2.5T and 2.5T AWD, available as option only in the Volvo S60 T5.



## FACTORY-INSTALLED OPTIONS

THE SENSE OF QUALITY AND CARE – AND KNOWING THAT YOU GET THE VOLVO THAT SUITS YOUR LIFESTYLE. CUSTOMIZE YOUR CAR WITH THE OPTIONS THAT BEST MEET YOUR DEMANDS AND DESIRES, AND YOU’LL SOON BE BEHIND THE WHEEL OF YOUR INDIVIDUALLY TAILORED S60.



**VOLVO NAVIGATION SYSTEM**

The Volvo Navigation System can guide you anywhere with precise audio and visual directions. Using the global positioning satellite system, a liquid crystal 6.5-inch display shows your location on a map and plots the best route. Controls are conveniently located on the steering wheel. When not in use, the screen retracts into the dashboard. All map-based information is stored on one single DVD disc.

**PREMIUM SOUND AUDIO SYSTEM**

Experience a world-class audio system for the truly discerning music-lover. Thirteen Premium Sound speakers and Dolby Pro-Logic® surround system give audiophiles a moving experience, especially when sitting in the front – it’s like having your favorite orchestra along for the ride.

- HU-803 RDS in-dash radio with built-in 4-CD changer, Dolby Pro-Logic® Surround Sound, 13 Premium Sound speakers and a separate 200 W Premium Sound amplifier plus 25 W for the center speaker. Remote control from the steering wheel.

**ON CALL PLUS**

Volvo On Call Plus provides emergency and roadside assistance 24 hours a day almost anywhere in the United States. A simple press on a button is all that is needed to obtain the assistance you require or it will happen automatically if you become involved in an accident. You are linked directly to the Volvo On Call Plus service center. Theft notification and tracking of a stolen vehicle are other features. Remote door unlock is also possible if the keys are locked in. Volvo On Call Plus also includes an integrated handsfree phone (separate subscription required).

The Dolby and Pro Logic trademarks are the property of Dolby Laboratories Licensing Corporation.



## ACCESSORIES

VOLVO'S ACCESSORIES HELP YOU MAKE YOUR S60 EVEN MORE SUITED TO YOUR PERSONAL NEEDS. THEY ARE THE ONLY ONES THAT HAVE BEEN TESTED TO MEET VOLVO'S EXACTING SAFETY, QUALITY AND ENVIRONMENTAL REQUIREMENTS. YOU CAN ALSO REST ASSURED THEY'RE A PERFECT MATCH TO THE TECHNOLOGY AND DESIGN OF YOUR VOLVO.

### FOR DRIVING FREEDOM

- Navigation system
- Hands free phone system
- Rear parking assistance
- 10 Disc CD changer
- CD holder glove compartment
- Speaker upgrades
- PC Table
- Reading lamp
- Business bag organizer
- Sun glass holder
- Lockable storage box
- Electric cooler box
- Ashtray
- Rear spoiler

### FOR YOUR LEISURE

- Roof mounted load carrier system
- Bicycle carrier
- Bicycle lift carrier
- Ski/Snowboard carrier
- Canoe/Kayak carrier
- Windsurfing board carrier
- Cargo box
- Load basket carrier
- Load lashing straps
- Detachable trailer hitch
- Automatic leveling system
- Trailer mirrors
- Fog lights
- Aluminum wheels
- Snow chains
- Electric engine heater
- Mud flaps front and rear
- First aid kit

### FOR YOUR INTERIOR COMFORT

- Luggage compartment mats
- Floor mats rubber
- Tunnel mat
- Load securing net trunk floor
- Net pocket side panel trunk
- Shopping bag holder and Bag
- Bumper protective cover
- Leather care kit
- Car cover

### FOR PRECIOUS CARGO

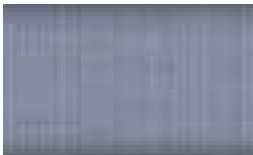
- Booster cushion and adjustable backrest
- Child activity bag
- Child mirror
- Sun shades rear door
- Sun shades rear window
- Rear center armrest table
- Padded neck cushion
- Warning Triangle
- Jumper cables

# INTERIOR SELECTIONS

CHOOSE FROM A NUMBER OF SPECIALLY DESIGNED OPTIONS TO CREATE THE INTERIOR THAT BEST SUITS YOU. THEN ENJOY YOUR CREATION EVERY TIME YOU ENTER YOUR CAR.



**GRAPHITE INTERIOR**  
T5 Sport leather/split Graphite/Indigo upholstery, Mesh aluminum trim inlays, leather-trimmed steering wheel and “sport shifter” gear selector.



Mesh aluminum trim  
(std. T5)



Simulated wood trim inlays  
(std. 2.5T, 2.5T AWD, opt. 2.4)



CLASSIC DESIGN SEATS



Cloth  
Graphite (9170)

Leather  
Graphite (9970)



SPORTS DESIGN SEATS



T5 Vinyl/Cloth  
Graphite (9270)

T5 Sport leather/split  
Graphite/Indigo (9373)

T5 Sport leather  
Graphite (9A70)

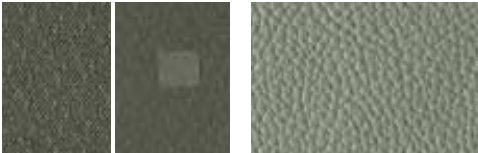
# INTERIOR SELECTIONS



**TAUPE INTERIOR**  
 Leather Light Taupe upholstery, simulated wood trim inlays, leather-trimmed steering wheel and gear-lever knob.



**CLASSIC DESIGN SEATS**

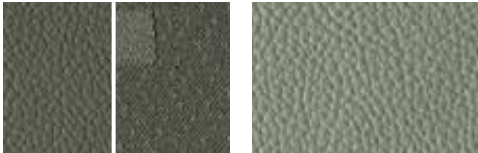


Cloth  
 Taupe (9180)

Leather  
 Light Taupe (9981)



**SPORTS DESIGN SEATS**



T5 Vinyl/Cloth  
 Taupe (9280)

T5 Sport leather  
 Light Taupe (9A81)





**BEIGE/LIGHT SAND INTERIOR**

T5 Sport leather Light Sand upholstery, Mesh aluminum trim inlays, leather-trimmed steering wheel and "sport shifter" gear selector.



**CLASSIC DESIGN SEATS**



Leather  
Light Sand (9951)



**SPORTS DESIGN SEATS**



T5 Sport leather  
Light Sand (9A51)



## EXTERIOR SELECTIONS

YOU CAN CUSTOMIZE THE LOOK TO SUIT YOUR TASTE AND TEMPERAMENT. CHOOSE FROM A VARIETY OF COLORS. SELECT FROM DIFFERENT WHEEL DESIGNS. DIAL UP THE ELEGANCE OR THE SPORTINESS UNTIL YOU HAVE JUST THE S60 THAT HARMONIZES WITH YOU.



7.5x17" TETHYS alloy wheels  
235/45/17 tires (opt. 2.5T, T5)



7.5x17" THOR alloy wheels  
235/45/17 tires (opt. AWD)



7x16" SIRIUS alloy wheels  
215/55/16 tires (std. T5 opt. 2.5T)



6.5x16" ORBIT alloy wheels  
205/55/16 tires (std. AWD)



6.5x16" URSA alloy wheels  
205/55/16 tires (std. 2.5T, opt. 2.4)

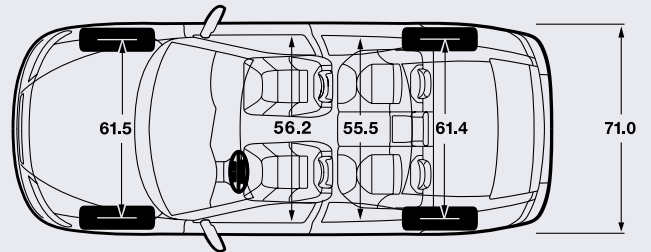
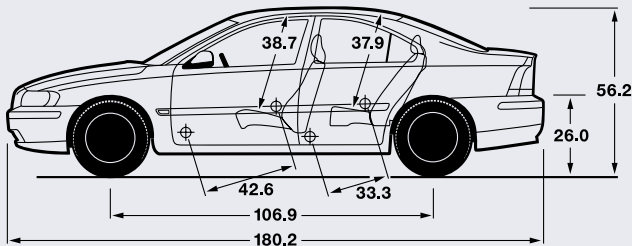


6.5x15" MUSCA alloy wheels  
195/65/15 tires (std. 2.4)

# TECHNICAL SPECIFICATIONS

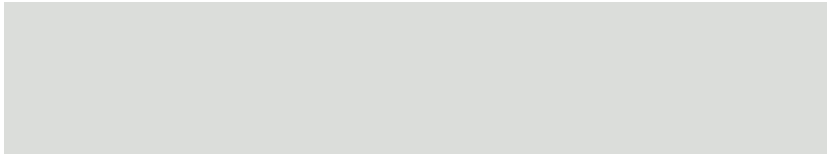
ENGINE:	S60 2.4	S60 2.5T	S60 2.5T AWD	S60 T5
Horsepower (SAE net)	168 @ 6,000 rpm*	208 @ 5,000 rpm	208 @ 5,000 rpm	247 @ 5,200 rpm
Torque (ft./lbs. SAE net)	166 @ 4,500 rpm	236 @ 1,500 -5,000 rpm	236 @ 1,500 -5,000 rpm	243 @ 2,400 -5,200 rpm
<b>TRANSMISSION:</b>				
5-Speed "Geartronic" Microprocessor-Controlled Automatic with "Auto-Stick" Function	–	P	P	○
5-Speed Microprocessor-Controlled Automatic	○	●	●	–
5-Speed Manual	●	–	–	●
<b>BRAKES:</b>				
Antilock Braking System (ABS) with Electronic Brake Distribution (EBD)	●	●	●	●
<b>SUSPENSION:</b>				
Front Suspension: MacPherson Strut with Asymmetrically Mounted Coil Springs, Hydraulic Shocks, 23.5 mm Stabilizer Bar	●	●	●	●
Rear Suspension: Multilink Independent Rear Suspension with Coil Springs, Hydraulic Shocks, 21 mm Stabilizer Bar	●	●	●	●
<b>STEERING:</b>				
Power-Assisted Rack-and-Pinion Steering, 2.8 Turns End Lock to Lock	●	●	●	●
<b>EXTERIOR DIMENSIONS &amp; WEIGHTS:</b>				
Curb Weight	3,276 lbs.	3,460 lbs.	3,571 lbs.	3,446 lbs.
Fuel Tank Capacity	18.5 U.S. Gallons	18.5 U.S. Gallons	18.0 U.S. Gallons	18.5 U.S. Gallon
Height	56.2 in.	56.2 in.	56.2 in.	56.2 in.
Length	180.2 in.	180.2 in.	180.2 in.	180.2 in.
Top Speed	130 mph	130 mph	130 mph	130 mph
Towing Capacity	3,300 lbs.	3,300 lbs.	3,300 lbs.	3,300 lbs.
Track, Front/Rear	61.5/61.4 in.	61.5/61.4 in.	61.5/61.4 in.	61.5/61.4 in.
Turning Circle, Curb to Curb	38.7 ft.	38.7 ft.	38.7 ft.	38.7 ft.
Wheelbase	107 in.	107 in.	107 in.	107 in.
Width	71.0 in.	71.0 in.	71.0 in.	71.0 in.
<b>INTERIOR DIMENSIONS:</b>				
Headroom with Moonroof/without Moonroof	38.9/38.7 in.	38.9/38.7 in.	38.9/38.7 in.	38.9/38.7 in.
Hiproom, Front/Rear	55.0/54.6 in.	55.0/54.6 in.	55.0/54.6 in.	55.0/54.6 in.
Legroom, Front/Rear	42.6/33.3 in.	42.6/33.3 in.	42.6/33.3 in.	42.6/33.3 in.
Shoulder Room, Front/Rear	56.2/55.5 in.	56.2/55.5 in.	56.2/55.5 in.	56.2/55.5 in.
Trunk Capacity	13.9 cu. ft.	13.9 cu. ft.	13.9 cu. ft.	13.9 cu. ft.
<b>FUEL ECONOMY (MPG):</b>				
Manual Trans Highway/City	30/22	–/–	–/–	27/21
Automatic Trans Highway/City	31/22	28/20	25/18	28/20

● = Standard ○ = Option P = Package \*165 @ 6,000 rpm for California SULEV + Engine





019 Black



614 Ice White



417 Nautic Blue metallic



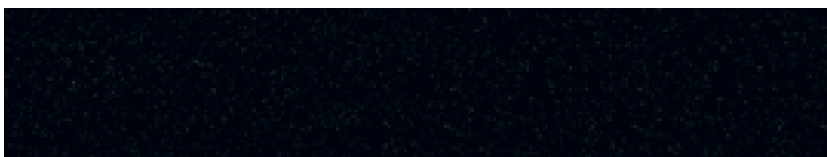
426 Silver metallic



446 Ash Gold metallic



449 Platinum Green metallic



452 Black Sapphire metallic



454 Ruby Red metallic



455 Titanium Grey metallic

**PLEASE NOTE:** It is not possible to reproduce exact original shades in this brochure. Ask your Volvo retailer to show you samples.

As part of our commitment to the environment, the paper used in this brochure is recycled, and color choices were printed directly on the page. This eliminates the need for chemically treated color chips. A small thing perhaps, but then, every little bit helps.



## WELCOME TO OUR FAMILY

BEING A VOLVO OWNER IS ABOUT MORE THAN JUST OWNING AN AUTOMOBILE. IT'S ABOUT BEING TREATED IN A CARING, RESPONSIVE AND RESPECTFUL MANNER EVERY TIME YOU INTERACT WITH OUR COMPANY. ALL OF US ARE COMMITTED TO MAKING EVERY ASPECT OF YOUR VOLVO EXPERIENCE A REWARDING ONE. SO AFTER THE NEW CAR SMELL BEGINS TO FADE, YOU'LL STILL BE EXCITED ABOUT OWNING A VOLVO.

**CARE**  
BY VOLVO

### **VOLVO FINANCE NORTH AMERICA**

If you purchase or lease your Volvo through Volvo Finance North America, you can take advantage of services designed to make financing simple and convenient. Quick Debit, for instance, enables you to have your monthly payment automatically debited from a designated bank account. For more information, call 1-800-770-8234 or visit [www.volvofinance.com](http://www.volvofinance.com).

### **CARE BY VOLVO® ON CALL ROADSIDE ASSISTANCE**

Whenever you need us, we're just a phone call away. Our nationwide network of retailers and authorized service providers are ready to assist. Whether you require roadside assistance or maps and routing information for your next trip, refer to your Care By Volvo® On Call Card and dial 1-800-63-VOLVO – anytime, day or night. Your complimentary four-year membership activates the moment you become a Volvo owner.

### **THE VOLVO OWNERS' CIRCLE**

Driving is not the only rewarding part of owning a Volvo. As a member of the Volvo Owners' Circle, you'll have access to information designed exclusively for Volvo owners. This unique online resource includes frequently asked questions, special offers, a resale value wizard, and your own Virtual Glove Box – complete with an owner's manual and more.

**PERSONAL SHOPPER.** The Volvo Personal Shopper is dedicated to providing you with a whole new level of shopping convenience. Whether you'd like help identifying the Volvo model that best fits your lifestyle, detailed information on any Volvo model, or a comparison against the competition, Volvo is there to help. We can arrange a Guest Drive for you at your nearest Volvo Retailer. So make the most of your shopping time and call the Volvo Personal Shopper at 1-800-550-5658. (U.S. only)

### **VOLVO NEW CAR WARRANTY**

Your new car warranty provides comprehensive coverage for four years or 50,000 miles, whichever occurs first. Additional warranties cover corrosion, seat belts, the supplemental restraint system, emission systems, genuine Volvo replacement parts and genuine Volvo accessories. Should you encounter any problem with your Volvo, simply contact the nearest retailer for assistance. Where your warranty ends, Volvo Increased Protection (VIP) plans begin. To purchase the additional protection of a VIP plan, contact your local retailer.

### **CARE BY VOLVO® FACTORY SCHEDULED MAINTENANCE**

Volvo is committed to a premium ownership experience for its customers. To further enhance your ownership experience, all 2004 model year Volvos sold in the United States will include Care By Volvo® Factory Scheduled Maintenance. This program provides scheduled maintenance coverage for the first 4 years or 30,000 miles, is designed to compliment your Volvo Warranty, and will help ensure trouble free operation of your Volvo. Optional program enhancements are available that will allow you to customize coverage to meet your driving needs. See your Volvo retailer for details.

**WWW.VOLVOCARS.US**

Specifications, features, and equipment shown in this catalog are based upon the latest information available at the time of publication. Volvo Cars of North America, LLC reserves the right to make changes at any time, without notice, to colors, specifications, accessories, materials, and models. For additional information, please contact your authorized Volvo retailer.

© 2003 Volvo Cars of North America, LLC. Printed in USA on recycled paper.

**MY04 D**

**VOLVO**  
Volvo Car Corporation