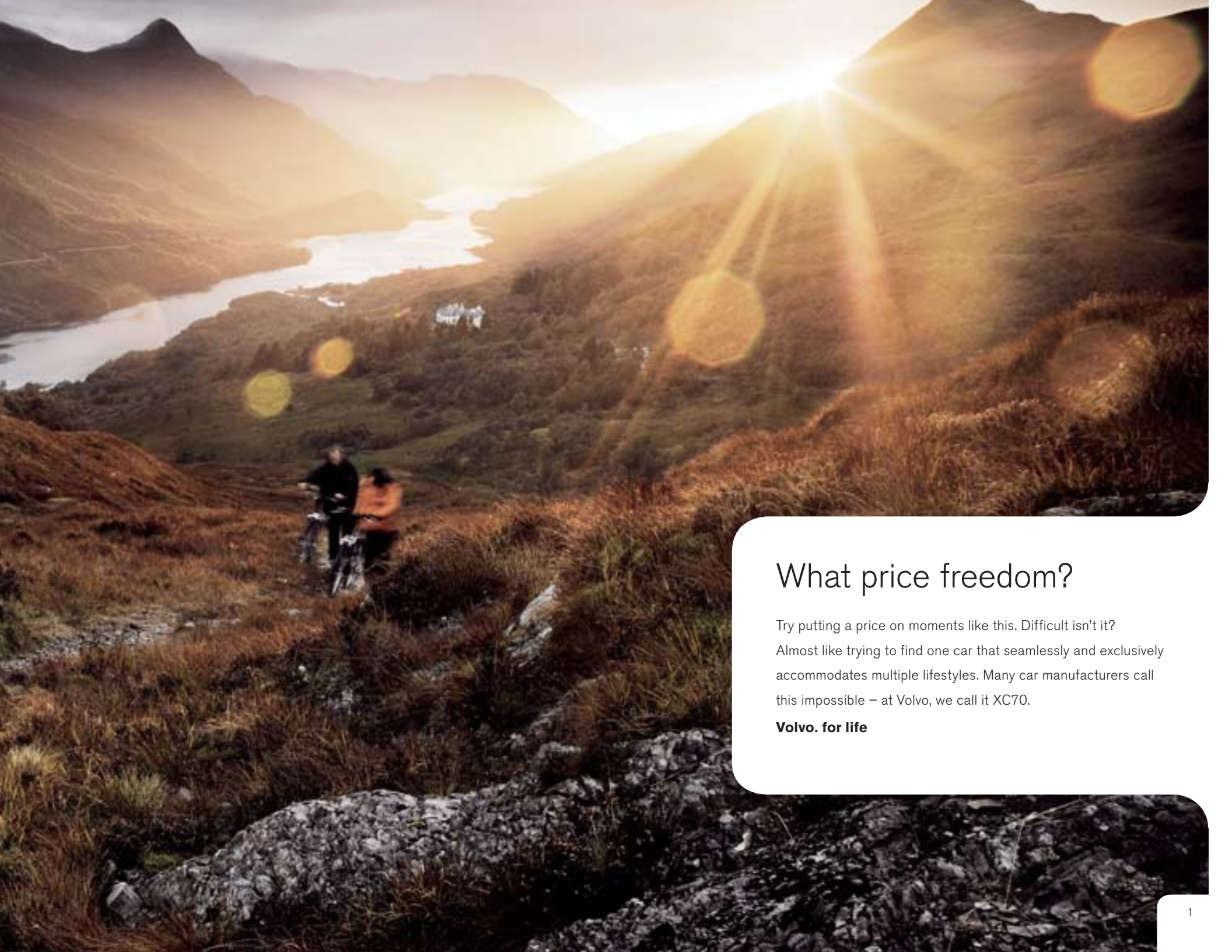




**VOLVO XC70**



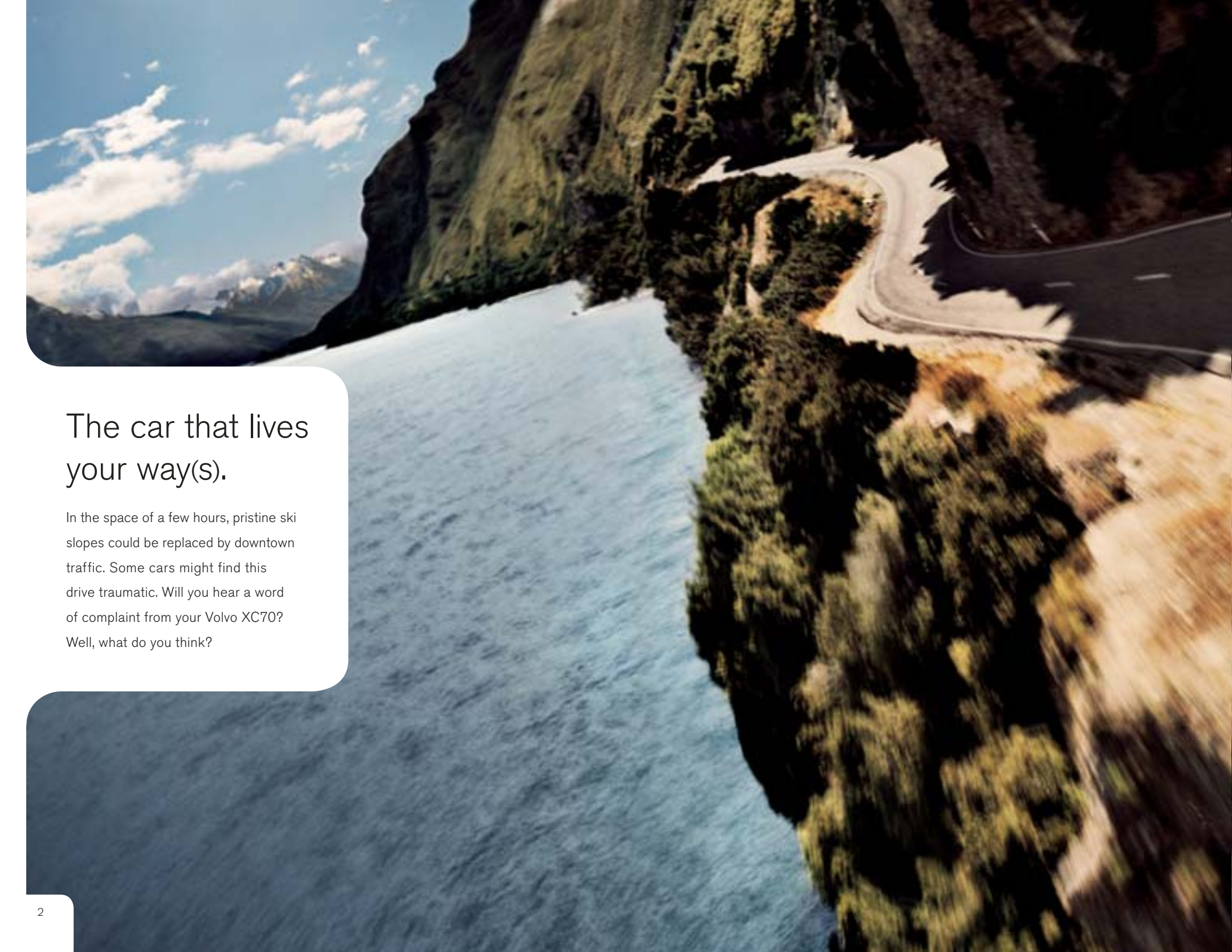




## What price freedom?

Try putting a price on moments like this. Difficult isn't it?  
Almost like trying to find one car that seamlessly and exclusively accommodates multiple lifestyles. Many car manufacturers call this impossible – at Volvo, we call it XC70.

**Volvo. for life**

An aerial, high-angle photograph of a winding asphalt road that curves along the edge of a steep, forested cliff. The cliffside is covered in dense green trees and shrubs. Below the cliff, a large, calm body of water, likely a lake or a wide river, stretches across the lower half of the frame. In the background, more rugged, mountainous terrain is visible under a bright blue sky with scattered white clouds. The overall scene is one of a scenic, high-altitude or mountainous region.

## The car that lives your way(s).

In the space of a few hours, pristine ski slopes could be replaced by downtown traffic. Some cars might find this drive traumatic. Will you hear a word of complaint from your Volvo XC70? Well, what do you think?







## At home where you are.

Wherever life – and living it to the full – takes you, the Volvo XC70 leads the way. Think power, refinement, versatility and style in any situation, any time. There was a time when your choice of car had to reflect your lifestyle. Say goodbye to those times.



## Come alive.

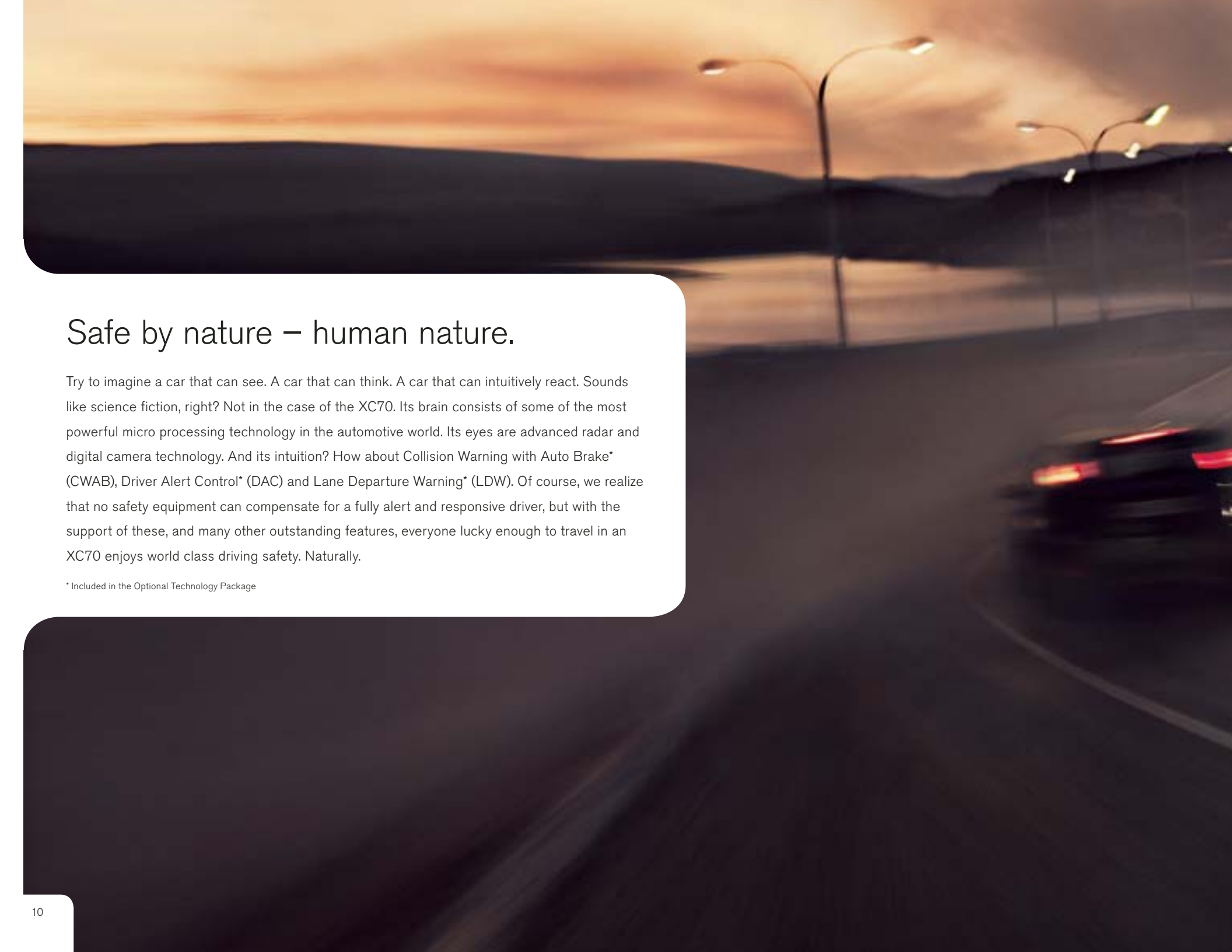
No matter how much it changes, this is one view you'll never grow tired of. Inside the Volvo XC70, intuitive design and facilitating features take you to a place where complexity is simplified and ergonomics and comfort live in harmony. Step inside and come alive.











## Safe by nature – human nature.

Try to imagine a car that can see. A car that can think. A car that can intuitively react. Sounds like science fiction, right? Not in the case of the XC70. Its brain consists of some of the most powerful micro processing technology in the automotive world. Its eyes are advanced radar and digital camera technology. And its intuition? How about Collision Warning with Auto Brake\* (CWAB), Driver Alert Control\* (DAC) and Lane Departure Warning\* (LDW). Of course, we realize that no safety equipment can compensate for a fully alert and responsive driver, but with the support of these, and many other outstanding features, everyone lucky enough to travel in an XC70 enjoys world class driving safety. Naturally.

\* Included in the Optional Technology Package





## Power liberates.

The turbo engine in the XC70 T6 packs 281 hp of pure breakaway power. The naturally-aspirated XC70 3.2 provides an agile 235 hp. Both engines are mated to the six-speed Geartronic automatic transmission and feature, Haldex AWD all-wheel drive.





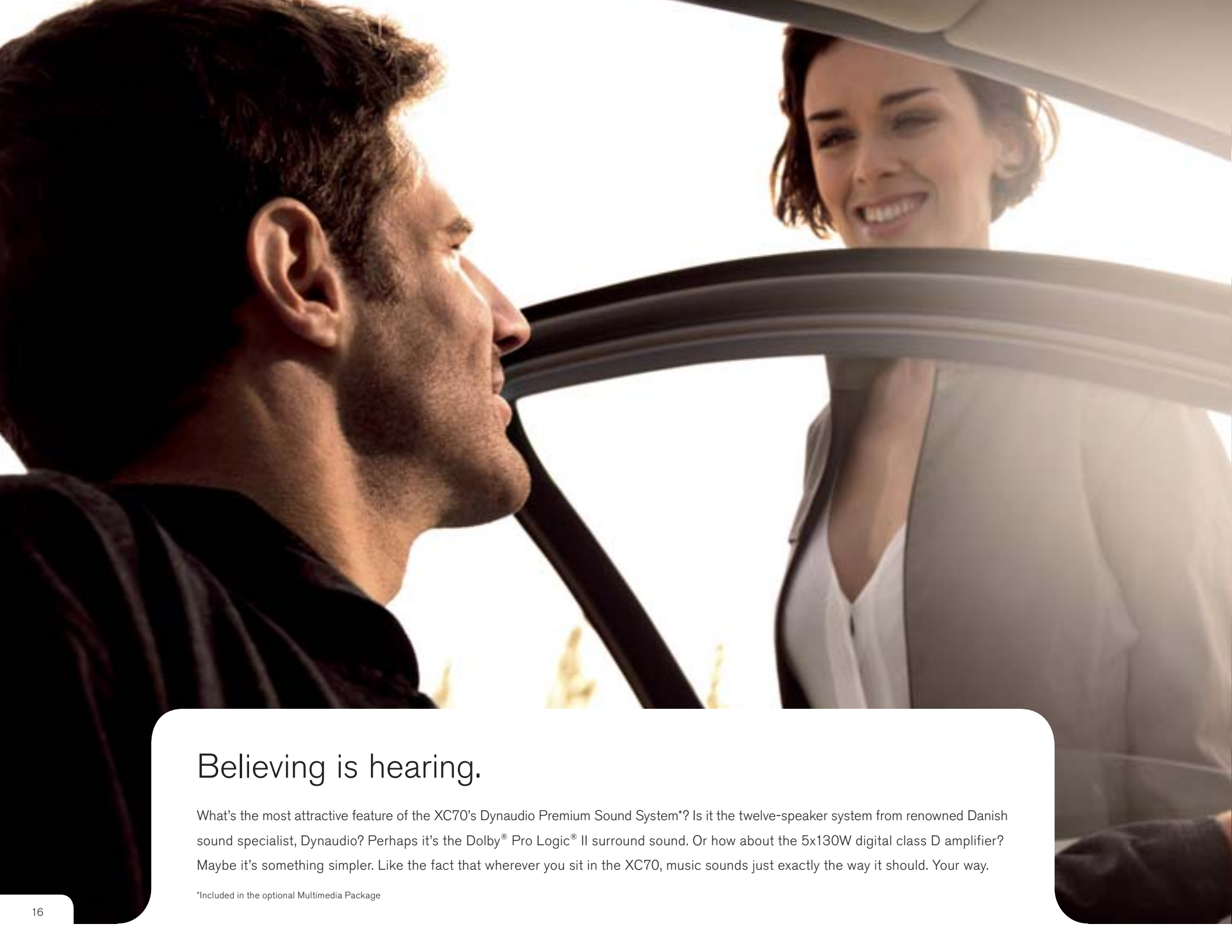


## Going downhill was never this uplifting.

Hill Descent Control is one of the Volvo XC70's outstanding features. By simply pushing a button, it offers smooth, controlled and safe descents on steep, rough roads. The system controls braking on each wheel, allowing you to concentrate fully on steering. Away from the wilderness, Hill Descent Control also makes it easier to move off when towing a heavy trailer.







## Believing is hearing.

What's the most attractive feature of the XC70's Dynaudio Premium Sound System\*? Is it the twelve-speaker system from renowned Danish sound specialist, Dynaudio? Perhaps it's the Dolby® Pro Logic® II surround sound. Or how about the 5x130W digital class D amplifier? Maybe it's something simpler. Like the fact that wherever you sit in the XC70, music sounds just exactly the way it should. Your way.

\*Included in the optional Multimedia Package



**DYNAUDIO**  
AUTHENTIC FIDELITY

## **WE INNOVATE FOR LIFE.**

For decades, we've created cars that encourage people to enjoy life and help protect it in the event of an accident. Many of the most important car safety innovations are the hallmark of Volvo, and hundreds of thousands of people all over the world can say they're still alive thanks to Volvo ingenuity.

This is not by coincidence. Our founders stated that safety is, and shall always be, at the heart of what we do. As a result, Volvo is recognized the world over for our passion and dedication to provide the safest cars on the road.

The protective character of Volvo also encompasses the world we share. Already in 1972, Volvo was the first car manufacturer to acknowledge and actively respond to the environmental impact of cars. In fact, we invented the three-way catalytic converter, and are constantly innovating to reduce the environmental impact of the cars we make and how we make them.

Of course, choosing a Volvo will always be something you do for both yourself and the people around you – because our cars will always consider the well-being of everyone. Even if those people happen to be outside your car or are part of future generations.

**Find more innovations at [volvocars.us](http://volvocars.us)**





“Cars are driven by people. Therefore, the guiding principle behind everything we make at Volvo is – and must remain – safety.”

Assar Gabrielsson and Gustaf Larson, founders of Volvo

## **CITY SAFETY COLLISION AVOIDANCE TECHNOLOGY**

In 2008, Volvo Cars introduced the new XC60 with City Safety – the world’s first standard-fitted collision avoidance and mitigation technology active at speeds up to 20 mph. Helping to lower the risk of low-speed collisions and whiplash injury, City Safety is a major step towards safer urban driving. At the moment, City Safety is only available in the Volvo XC60.

## **THE THREE-WAY CATALYTIC CONVERTER**

In 1976, Volvo Cars was the first car manufacturer to introduce the three-way catalytic converter with an oxygen sensor for exhaust emission control. Today virtually all gasoline-powered cars are equipped with this ingenious component – just as indispensable for the environment as the three-point seat belt is for safety.

## **THE THREE-POINT SAFETY BELT**

In 1959, Nils Bohlin, a Volvo safety engineer, invented the three-point safety belt. So important is this invention, it is considered to be one of the most life-saving technical innovations in the history of mankind.

# **VOLVO SAFETY TECHNOLOGY. BECAUSE PEOPLE ARE ONLY HUMAN.**

Cars are driven by people. That's why all our safety research and development continues to investigate the capabilities, limitations and tendencies of human nature. This people-centric research is always based on real situations – and with the vision to create cars that do not crash.

To help you avoid accidents while maintaining the fun of driving, Volvo safety technologies are designed to support the driver in various situations without unnecessary interference. All these intelligent technologies share information and interact with split-second precision. Today, a new Volvo can “read” actual situations and provide optimal support and protection for example, by sensing normal driving patterns or panic situations and by taking protective action before, during and after a collision. Still, technology can never take the responsibility away from you, the driver. Final decisions are always in your hands. But if these technologies help make you more alert and relaxed, they will also contribute to the overall safety of those in and around your Volvo.

**Read more about our safety research at [volvocars.us](http://volvocars.us)**





## **VOLVO ACCIDENT RESEARCH TEAM**

Since 1970, Volvo's Accident Research Team has investigated accidents involving Volvo cars on Swedish roads. Today, our own statistical database contains over 36,000 accidents with more than 60,000 occupants. In addition to studies on the scene of the accident, our researchers also investigate what happened before the crash to understand how to improve the driver's conditions to avoid a collision. These findings give us unique knowledge that guides us in creating technology that helps prevent or mitigate accidents and – if an accident can't be avoided – to help protect the occupants.

## **VOLVO CARS SAFETY CENTER**

Based on the findings from our accident research, we can recreate a variety of real-life traffic situations and crashes. Beyond numerous virtual crash tests in super-computers, we perform around 400 crash tests each year. We crash test car-to-car at different speeds and from different angles. We perform frontal impacts, rear impacts, side impacts and roll-over tests and test cars off-road as well as against genuine Swedish granite rock-face – we can even simulate impacts with wild animals.

## **IF YOU MAKE IT HERE, YOU MAKE IT ANYWHERE**

Other car manufacturers come to Sweden for final car testing under harsh and capricious conditions. For us it's home. Our own proving ground Hålleröd with its 34 miles of test tracks includes different road types from all over the world. Here we scrutinize our cars' ability to support their drivers in all imaginable and unimaginable situations during thousands of test miles – not to mention the distances driven on ordinary Swedish roads.

## **TOWARDS A FUTURE WHERE CARS DON'T CRASH**

We already know what we want to achieve: no accidents. By applying a holistic approach which considers the driver and the vehicle as well as the infrastructure, we can realize a future where cars interact with other cars, the road and the traffic-control systems. For example, this includes cars that can brake and steer automatically, if needed. This makes it possible to design cars in completely new ways to protect and preserve life.



## IS DOING FOR THE ENVIRONMENT WHAT THE SAFETY BELT DOES FOR PEOPLE.

Looking after people and the environment is an indispensable part of the Volvo soul. For more than 80 years we've been driven by a passion for safety. We are environmental pioneers in the car industry, and have always employed a healthy respect for our limited resources and environmental responsibilities. Consequently, we aim to create new solutions that help halt climate change and improve the environment – both inside and outside the car. Our goal is crystal clear: to build cars that leave a minimal impact on the environment. We don't think that there is just one way to tackle the environmental issues. We think there are many solutions and we must explore all the options. That's why we're developing new eco-technologies. **DRIVE captures all our environmental work – from production to recycling – and represents our commitment and continued efforts for sustainable mobility.**







## MOTION

We must minimize the emissions of fossil CO<sub>2</sub> (which leads to climate change) and increase the energy efficiency of our cars. **Continuous improvements** within aerodynamics, rolling resistance, lightweight materials and drive train technology help us lower fuel consumption. In our new **Hybrid technology center** in Göteborg, we are developing the next generation power trains for future Volvos.

## INSIDE

If you drive 10 000 miles a year, you spend at least 24 hours a month in your car. We also know that more and more people are suffering from asthma and allergies. To ensure a healthy interior for you and your passengers, we test upholsteries and interiors in the **Volvo Environmental Laboratory** in Sweden. All upholstery materials and interior textiles also comply with **Oeko-Tex Standard 100** – an international benchmark for human ecological safety of textiles. All **leathers are chromium-free** – they're tanned using vegetable or synthetic substances instead of chromium. What's more, some panel trims are **Forest Stewardship Council (FSC) certified** to ensure the wood comes from responsibly managed forests.

## LIFECYCLE

Already from the early stages of conception we've considered our cars' environmental impact: from design and manufacturing to useful life and recycling. For example, we've seen to that our factories are powered by wind and hydro power and use energy and water responsibly. Our production facilities are certified under **the global environmental standard ISO 14001**, and we make sure that all our major suppliers meet our strict environmental standards. At the end of its useful life, every Volvo is designed to be **85% recyclable**. We also offer **re-manufactured exchange parts** which substantially reduces the need for raw materials and energy.

## WHAT'S IN IT FOR YOU?

We are committed to creating cars that contribute to a better life – be it inside or outside the vehicle. Utilizing advanced technology, your Volvo is designed to use fuel efficiently and reduce its impact on the environment. This caring attitude continues inside your Volvo. Here you and your passengers can experience one of the automotive industry's cleanest and healthiest cabin environments. It's as enjoyable as it's responsible. Just as you would expect of a Volvo.



### **FUEL-SAVING DESIGN.**

To reduce energy-loss from wind and roll resistance, we utilize advanced aerodynamic design, light-weight materials and low-friction technology. Together with state-of-the-art engine technology, this lowers your CO<sub>2</sub> emissions and helps you travel further on fuel.

### **FRESH CABIN AIR.**

Continuously monitoring incoming air and shutting out carbon monoxide, ground-level ozone and nitrogen dioxide, Volvo's Interior Air Quality System\* helps ensure that the air you breathe in the car is cleaner than that outside when driving in heavy city traffic.

\* Included in the optional Climate Package.

### **SAFER INTERIOR MATERIALS.**


All our upholsteries and interior textiles are tested for certain allergy-inducing or harmful substances and comply with Oeko-Tex Standard 100. And several interior metal details are tested with regard to contact allergies. Good for you, and for anyone who shares your ride.



## STANDARD FEATURES

VALUE	XC70 3.2 AWD	XC70 T6 AWD
Complimentary Factory Scheduled Maintenance for 3 years, 36,000 miles	●	●
<b>SAFETY</b>		
ABS Anti-lock Brakes with EBA	●	●
Anti-submarine seats	●	●
Cargo security cover	●	●
Daytime running lights (halogen semi-sealed with replaceable bulb)	●	●
Driver and front passenger supplemental restraint system—multi-threshold air bags	●	●
Dynamic Stability and Traction Control (DSTC)	●	●
Electric Parking Brake	●	●
Hill Decent Control	●	●
IDIS Intelligent Driver Information System	●	●
Illuminated side marker lights/turn signal indicators	●	●
Immobilizer, encrypted ignition key	●	●
Inflatable side curtain (IC)	●	●
ISOFIX baby/child seat attachment system	●	●
Rear fog light with auto-off	●	●
Safe approach and home safe lighting	●	●
Seat belts: five, 3-point inertia-reel belts with automatic pretensioners; front belts have height adjustment	●	●
Seat belt reminder	●	●
Security system	●	●
Side impact air bags for driver and front passenger (SIPS bags IITM)	●	●
Side impact protection system (SIPS)	●	●
Top-tether child seat anchorage capability	●	●
Tire Pressure Monitoring System (TPMS)	●	●
Whiplash protection seating system (WHIPS)	●	●
<b>INTERIOR</b>		
Auto Dimming Rearview Mirror	●	●
Bluetooth® handsfree system	●	●
Central power door locks with remote control, tailgate and fuel filler door locks	●	●
Classic Wood inlay	N/A	●
Cruise control	●	●
Cup holders (8)	●	●
Dual integrated booster seats	○	●
Dual-zone electronic climate control (ECC)	●	●
Five padded head restraints	●	●
Four reading lights	●	●
Front 12-volt power outlet	●	●
Front center armrest	●	●
Front door-panel storage pockets	●	●
Front seat-back storage pockets	●	●
High Performance Audio System with In-dash CD 8 speakers	●	●
Illuminated lockable glove compartment	●	●
Illuminated vanity mirrors in driver/front passenger sun visors	●	●
Interior cabin light delay	●	●
Leather-clad steering wheel	●	●
Leather-clad gear lever knob	●	●
Leather Seating surfaces	○	●
Luggage/cargo area lights	●	●

	XC70 3.2 AWD	XC70 T6 AWD
Outside temperature gauge	●	●
Power-adjustable driver seat, 8-way with 3-position memory and lumbar support	●	●
Power Passenger seat	○	●
Power windows with driver and passenger auto up/down with anti-trap feature	●	●
Rear seat ventilation outlets on B-pillar	●	●
Rear window defroster with automatic timer	●	●
Sirius Satellite Prep	●	●
Tilt/telescopic steering wheel with illuminated cruise and audio controls	●	●
Two entry lights (in front door footwells)	●	●
UXB and AUX input	●	●
Watch Dial Instruments	N/A	●
XC Seat and door panel stitching	●	●
XC Floor mats	●	●
40/20/40 split-flat folding rear seat	●	●
<b>EXTERIOR</b>		
Dual Exhaust End Pipes	N/A	●
Front and rear skid plates	●	●
Front fog lights	●	●
Power-adjustable heated exterior rearview mirrors	●	●
XC Body trim	●	●
XC Grille	●	●
XC Roof rails	●	●
16" Cecino alloy wheels	●	N/A
18" Merac alloy wheels	N/A	●

 The Bluetooth word mark and logos are owned by the Bluetooth SIG, Inc. and any use of such marks by Volvo Car Corporation is under license. Other trademarks and trade names are those of their respective owners.



## FACTORY OPTIONS

EXTERIOR	XC70 3.2 AWD	XC70 T6 AWD
BLIS (Blind Spot Information System)	○	○
Dual-Xenon Headlights with Active Bending Light	○	○
Metallic paint	○	○
PCC (Personal Car Communicator)	○	○
Power glass moonroof	P	○
Premium Metallic Silver paint	○	○
Navigation System real-time traffic, remote control and map care with two complimentary updates	○	○
17" Sargas alloy wheels	○	N/A

● = Standard   ○ = Option   N/A = Not available



## PACKAGES

### CLIMATE PACKAGE

In a Volvo you're always prepared to deal with the ever-changing forces of nature. And to increase comfort when driving in cold, rain or snow – simply add the Climate Package.

- Heated rear seats (N/A T6)
- Heated front seats
- Heated windshield washer nozzles
- Headlight washers
- Rain sensor
- Interior Air Quality System (IAQS)
- Humidity Sensor

### CONVENIENCE PACKAGE

The wide range of considerate and practical features makes life with your Volvo a truly enjoyable experience. And by adding the Convenience Package, you expand your freedom even more.

- Grocery bag holder, cargo area
- Tinted rear windows
- Park assist, front and rear
- Power operated tailgate
- Private locking
- 12 volt outlet, cargo area
- Homelink™
- Audio dimming and compass in rear view mirror

### PREMIUM PACKAGE (3.2)

A Volvo offers you long, relaxed drives and more spirit in your daily life. The Premium Package will provide you with some necessities for that extra ambience and convenience.

- Inside rearview mirror with compass
- Modern wood inlays
- Leather seating surfaces
- Power glass moonroof
- Power passenger seat

### MULTIMEDIA PACKAGE

Wherever the road may take you, adding the Technology Package to your Volvo helps you to see the twists and turns and keeps you entertained along the way.

- Sirius™ Satellite Radio with complimentary six month subscription
- Dynaudio Premium Sound System® with Dolby Pro Logic II Surround
- Navigation System with real time traffic, remote control and Map Care with two complimentary updates

### TECHNOLOGY PACKAGE\*

Wherever the road may take you, adding the Technology Package to your Volvo helps you to see the twists and turns and keeps you entertained along the way.

- Adaptive Cruise Control
- Collision Warning with Auto Brake
- Distance Alert
- Lane Departure Warning
- Driver Alert Control

\* Requires Climate package

**COLOR YOUR VOLVO.** When it comes to the appearance of your Volvo, the choice of exterior color, wheels and other styling items are probably your most important design decisions. For more exterior styling options and to build your new Volvo online, please visit [www.volvocars.us](http://www.volvocars.us)



614 Ice White  
(3.2 and T6)



477 Premium Electric Silver metallic\*  
(3.2 and T6)



472 Oyster Grey metallic  
(3.2 and T6)



493 Caper Green metallic  
(3.2 and T6)



498 Caspian Blue metallic  
(3.2 and T6)



019 Black Stone  
(3.2)

**Clean colors**

To reduce usage of environmentally hazardous solvents all Volvo exterior colors are water-based. What's more, our painting facilities are among the cleanest in the world.

**Please note:** It's not possible to reproduce exact original shades in printed matter. Please ask your dealer to show you samples.

**EXTERIOR DESIGN.** The XC70's muscular yet lean design characteristics can both seduce and deceive. Its seductive nature is obvious. Horizontal lines give the car a wide, low look while the vertical design qualities have been emphasised to create a tough, rugged and stable impression. As for deceptive, we were referring to load capacity. And in the case of the XC70, this is anything but lean. The XC70 is also a blank page on which you can write your own personal signature by adding side scuff plates, aluminum crossbars, a roof spoiler or any one of many other eye-catching touches.



Erakir 8x19"  
Diamond cut/Silver stone Matt  
(retailer installed Accessory)



Erakir 8x19"  
Diamond cut/Anthracite Matt  
(retailer installed Accessory)



Erakir 8x19"  
Black Chrome  
(retailer installed Accessory)



Merac 7.5x18"  
Silver Bright  
(standard T6)



Sargas 7.5x17"  
Silver Bright  
(optional 3.2)



Cecino 7x16"  
Silver Stone  
(standard 3.2)

**INTERIOR DESIGN**



Leather-clad steering wheel,  
Offblack with Silk metal inlay



Leather-clad steering wheel,  
Sandstone with Silk metal inlay



Dark Finline trim  
(standard 3.2)



Classic wood trim  
(standard T6)



Leather-clad gear knob  
Offblack, Geartronic



Leather-clad gear knob  
Sandstone Beige, Geartronic



Modern wood trim  
(included in Premium Package, 3.2)





Leather Offblack upholstery (F101)  
Modern wood trim center console and door panel inserts (N/A T6 and optional 3.2)



Sundry Textile/T-Tec Offblack upholstery (F501)  
Dark fineline trim center console and door panel inserts (3.2)



Leather Sandstone Beige upholstery (F112)  
Classic wood trim center console and door panel inserts (T6 and optional 3.2)  
(Classic wood standard T6, N/A 3.2)



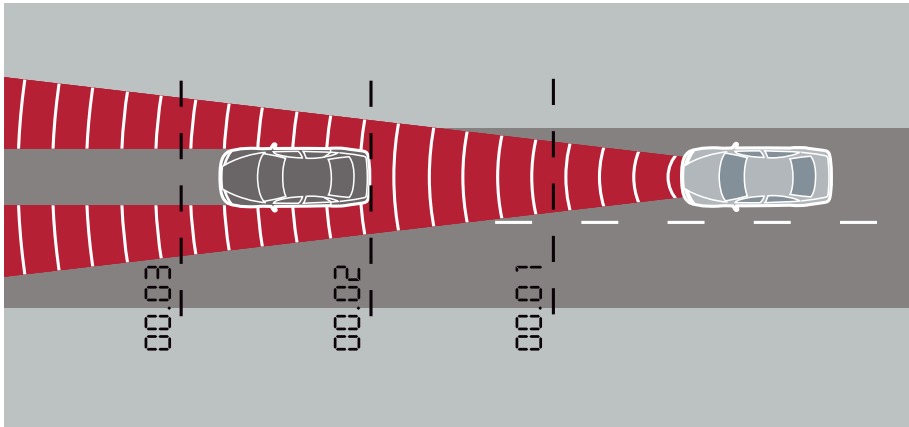
Sundry Textile/T-Tec Mocca Brown upholstery (F514)  
Dark fineline trim center console and door panel inserts (3.2)

# SAFETY

At the core of every car we make, state-of-the-art technology helps support the driver and protect the occupants. And to further enhance the Volvo safety experience, there's a range of supplementary safety technology – for more performance and peace of mind.



## SAFETY Preventive



### Adaptive Cruise Control (ACC) with Distance Alert\*

Helping the driver to keep a safe distance from vehicles in front at speeds over 20 mph, ACC is a supportive partner for a more relaxed driving experience on long journeys and motorways. Just select the desired speed and the minimum time gap to the vehicle in front. When the radar sensor detects a slower vehicle in front, the speed automatically adapts to that vehicle. And when the road is clear, the car resumes the selected speed. If ACC is disengaged and a vehicle in front comes too close, Distance Alert activates a red warning light in the lower section of the windscreen to help you keep a proper distance.

\* Included in the optional Technology Package



### Collision Warning with Auto Brake (CWAB)\*

Primarily designed for highway driving, CWAB can warn you if you're too close to a vehicle in front and – if a collision can't be avoided – can activate the brakes to help mitigate the impact. Within a range of 150 metres, a radar sensor behind the grille and a digital camera behind the windscreen continuously monitor the distance to the vehicle driving in front of you. If the vehicle suddenly brakes (or is stationary) and Collision Warning senses that a collision is likely to happen, it will alert you to act with a flashing red warning light on the windscreen along with an audible alarm. Moreover, this technology supports driver-initiated braking by pre-charging the brakes to quickly prepare for panic braking and help shorten the reaction time. If you don't react to the warning and a collision is imminent, the brakes will activate automatically.

\* Included in the optional Technology Package

## SAFETY Preventive



### Driver Alert Control (DAC)\*

Up to 90% of all traffic accidents are caused by driver distraction. Driver Alert Control is a unique technology that can help alert a tired or distracted driver at speeds over 40 mph. Using signals from a digital camera to monitor the road ahead along with data from steering wheel movements, DAC can compare erratic behaviour to your normal driving style. If DAC detects that you begin to drift within your lane, you receive an audible warning. At the same time, a message is displayed in the instrument panel suggesting it might be time for a break.

\* Included in the optional Technology Package



### Lane Departure Warning (LDW)\*

At speeds over 40 mph, Lane Departure Warning can help prevent single-vehicle road departures as well as collisions caused by temporary distraction. This function uses the digital camera to register the lane markings and help monitor the car's position on the road. If you weave out of your lane, LDW will alert with an audible signal. If you intentionally cross a lane marker using the direction indicators, LDW is not activated.

\* Included in the optional Technology Package

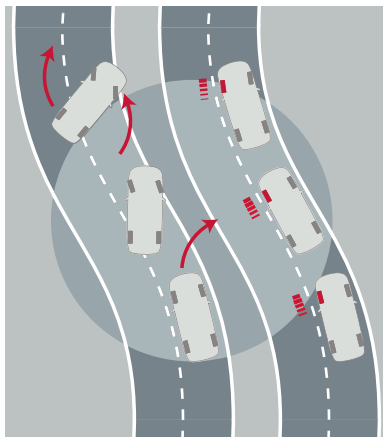


### Adaptive brake light

Active at speeds above 30 mph, the adaptive brake light can sense the difference between normal and panic braking. If it is a panic situation, all the brake lights will flash at a rate of four times per second. Once your speed slows to below 19 mph, the lights stop flashing and hazard lights flash instead.

### Intelligent Driver Information System (IDIS)

To help avoid distractions during critical driving situations, IDIS constantly analyzes your driving and will delay secondary information from the car or one of its onboard systems – such as the GSM phone – when it detects intense steering, braking or acceleration. As soon as things calm down, the phone call or the delayed information is presented. IDIS can be set up to let GSM calls through in all driving situations.



### Dynamic Stability and Traction Control (DSTC)

By helping prevent fishtails, spinouts, and rollovers, stability control technology like DSTC has been described as one of the most vital safety advances of the past decade. At the core of DSTC, a gyroscope senses the car's direction and compares this with steering wheel movements as well as the actual rotation of the car's wheels. DSTC is able to detect a potential skid and help counteract this by reducing the engine's power output, or braking on one or more wheels.



### Active Bending Lights (ABL)\*

In addition to improving illumination by using Dual Xenon light technology, the Active Bending Lights give a boost to your vision round bends at night. Controlled by micro-processors, the motorised lamps turn up to 15 degrees in either direction when driving – reliably lighting up your chosen path. A twilight sensor disengages the adaptive function during daylight to extend its life span.

\* Included with Dual-Xenon Lights

In a Volvo, safety is about interaction. Because it's not the number of safety features that determines how safe a car is. It's how well they seamlessly interact to help keep the occupants out of harm's way.



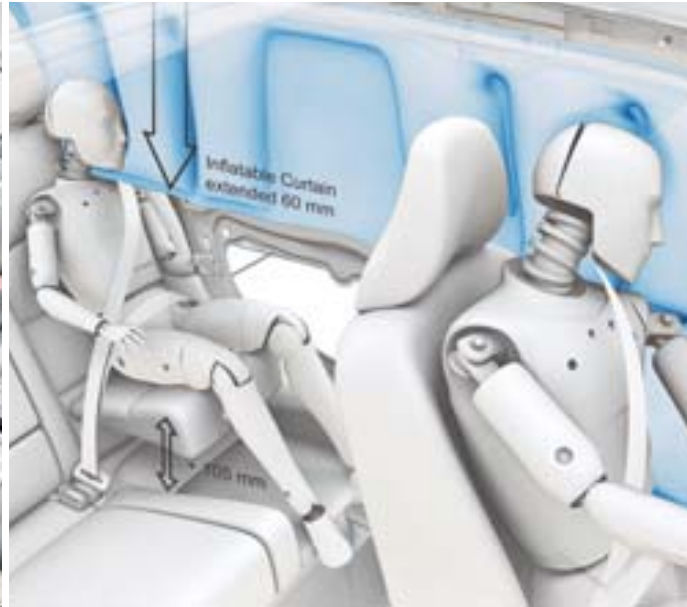
**In a rear impact** the rear deformation zones will help absorb crash energy. The fuel tank is designed to remain well protected in front of the rear axle. The head restraints help protect the neck and spine, and Volvo's unique Whiplash Protection System (WHIPS) cradles the front seat occupants in a controlled manner to help prevent whiplash injuries.

**In a side impact** Volvo's unique Side Impact Protection System (SIPS) helps distribute the crash forces across the car's body, away from the occupants. The dual-chamber side airbags in the front seats help protect the chest and hip, while the Inflatable Curtain (IC) adds head protection.

**In a roll-over** the robust safety cage and the reinforced roof structure together with the safety belts and belt pre-tensioners will help protect the occupants. If the car first has been hit from the side, the Inflatable Curtain (IC) deploys to help provide head protection.

**In a frontal collision** the patented frontal structure will yield to help absorb and disperse crash energy. The compact power train is designed to help optimise deformation. Inside the car, safety belts interact with the collapsible steering column and dual-stage airbags to help keep the occupants out of harm's way. A lower cross member helps protect occupants in an oncoming car with lower positioned bumpers.

## SAFETY Protective



### Restraint technologies

In a collision, Volvo's restraint technologies interact to help reduce the impact. The **safety belts with pre-tensioners** activate within a few thousandths of a second in the event of a collision and tighten the belt to help keep the occupants securely restrained. The front seat safety belts then release a little so that the driver and passenger are cushioned by the airbags in a controlled manner. Helping to optimise protection, the **dual-stage airbags** adapt the level of inflation depending on the force of the collision. The driver's airbag also interacts with the deformation of the collapsible steering column.

**Dual-chamber side airbags** in the front seats help reduce the risk of serious injuries in a side collision. Two separate chambers are inflated at different pressures to help optimise protection of the chest and hip on the front seat occupants. The **Inflatible Curtain (IC)** helps protect the heads of both front and rear outboard occupants. It also stays inflated for some seconds to provide prolonged protection for subsequent impacts. And to help protect children in the rear seat, IC interacts with the two-stage integrated booster cushions and the belt load limiters.



### Whiplash Protection System (WHIPS)

Integrated in the front seats, Volvo's WHIPS cradles the occupant to help reduce the risk of whiplash injury (one of the most common types of traffic injury and often the result of a low-speed rear impact collision). The function is activated by a collision of sufficient force from behind. Independent research has shown that WHIPS is one of the most effective systems in the world and can reduce the risk of long-term invalidity by 50%.

### Energy-absorbing frontal structure

In developing this Volvo's protective qualities, we have focused on frontal collisions at both higher speeds and with heavier vehicles. The patented frontal structure with its sizeable deformation zones in different kinds of steel will yield to help absorb crash energy. The compact power train is designed to help optimise deformation. The unique geometry of the frontal structure and longitudinal steel struts in the doors help disperse crash energy away from the front to the rear of the car, further helping to reduce the strain on the occupants. A steel strut under the dashboard further helps keep the cabin intact.

### Side Impact Protection System (SIPS)

SIPS is a Volvo unique safety system that has been developed to help protect where occupants are most exposed to the crash forces. The steel framework of the car – including the front seats – is designed and reinforced to help displace the impact of a side-collision away from the occupants to other parts of the car body and help prevent intrusion into the cabin. The extremely strong side structure is built-up with ultra-high strength steel and softer grades of steel to help withstand a severe side impact – even with a larger vehicle. The Inflatible Curtain (IC) for all the outboard occupants and the front seat dual-chamber side airbags interact to help provide further protection. In the rear seat, the combination of extended IC and Volvo's integrated two-stage booster cushion with progressive safety belt load limiters helps protect children.

## SAFETY Security



### Personal Car Communicator (PCC)\*

The optional PCC is an advanced remote control that combines keyless drive with two-way communication with your Volvo. Keep the PCC with you and the car unlocks automatically as you pull the door handle. Start the engine by pressing a button on the dash, lock the car by pressing a button in the door handle. Later in the day, if you're wondering whether you've locked the car, PCC can remind you; no matter where you are. On your return to the car – within a radius of 200 to 300 feet – pressing the PCC information button will give you a current report on its status. If the alarm has been activated, the onboard heartbeat sensor will give you advanced warning if there's somebody in your car and an opportunity to evaluate the situation safely.

\* Optional



### Power retractable door mirrors with ground lighting\*

At the touch of a button, these door mirrors can be folded flat against the car where they are less likely to get damaged after you've parked. They also fold or unfold automatically every time you lock or unlock the car. The integrated ground lighting is activated with the remote control or with the PCC. Beyond enhancing security to and from your car at night, this is also convenient when getting in and out.

\* Included with the optional Blind Spot Information System BLIS



### HomeLink\*

With buttons integrated in the sun visor, HomeLink® allows you to operate remote controlled home appliances – such as garage door, home alarm and exterior lighting – without leaving the car.

HomeLink is a registered trademark of Johnson Controls Technology Company.

\* Included in the optional Convenience Package

### Approach and Home Safe Lighting

Activated with the remote control or Personal Car Communicator, Approach Lighting provides a warm reception on a dark night. This consists of interior and side lights – ground lighting too, if you choose it. Home Safe Lighting is activated with the headlight stalk as you leave the car and it provides a similar courtesy when exiting your car. This feature includes a dipped beam from the headlight to accompany you to your door.

### Lockable floor

To further foil smash and grab burglaries, the closed tailgate – just by the function of its design – overlaps and seals the compartment hidden under the cargo floor. To keep this private storage area inaccessible to other users of the car, e.g., valet parking, you can include the tailgate when setting your private locking preferences.

# COMFORT

A Volvo is always designed for more than one. Our technology aims to enhance the feel-good factor for everybody with the privilege of riding in a Volvo. And to further improve comfort and convenience, there's a range of clever equipment – customized for your Volvo and the people inside it.



## COMFORT Seats



### Power front seats\*

Find your perfect driving position with push-button ease. The driver's seat also incorporates a memory function that stores three separate seat and door mirror settings connected to a specific remote control – a feature that's appreciated when the car has several drivers.

\* Driver and Passenger power seat standard T6. Power passenger seat included with Premium package on 3.2

### Heated front seats\*

Adjustable in three settings, heated seats for the driver and front seat passenger add to comfort on those cold mornings.

\* Included in the optional Climate Package

## COMFORT Climate



### Power glass moonroof\*

This makes the interior feel extra light and airy. It opens and closes at the touch of a button. If the sun is too strong, just close the built-in sun screen. The moonroof can also be closed together with the side windows using the central locking remote control.

\* Included in the optional Premium Package on 3.2 models, stand alone option on T6

### Electronic Climate Control (ECC)

Electronic Climate Control (ECC) maintains the cabin temperature you choose and can be set independently for the driver and front passenger. Further contributing to your health and comfort, Volvo's unique humidity sensor helps ensure cabin air has an appropriate level of humidity according to the outside climate.

### Interior Air Quality System (IAQS)\*

Volvo's IAQS continuously monitors incoming air and will, if necessary, temporarily close external air vents to shut out carbon monoxide, ground-level ozone and nitrogen dioxide. Meanwhile, an active carbon filter protects the occupants from other harmful gases and unpleasant odours. This helps to ensure that the air you breathe in the car is cleaner than that outside when driving in heavy city traffic and tunnels.

\* Included in the optional Climate Package

## COMFORT Storage



### Front center armrest, multifunctional

The central aisle of the cabin incorporates several facilities. Two cup holders are concealed by a roll-top cover. There's a handy storage space beneath the armrest, and special recesses for small items. Folding back the upper part of the armrest will provide a convenient table for the rear seat passengers. The armrest also features an AUX input and – depending on your choice of audio system – a USB port to connect your MP3 player to the car's audio system.



### Sun glass holder\*

Fitted in place of any of the entry grab-handles in the front, this holder keeps your glasses or sun glasses within reach. Simply press the oil-damped cover and it opens up.

\* Retailer installed accessory

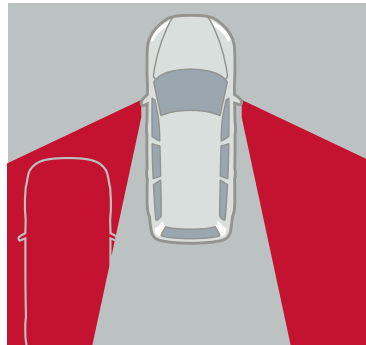


## TECH & SOUND

Employing the latest information technology, your Volvo is prepared to support and entertain you at a very high level. Surround yourself and your friends with world-class sound and enjoy the innovations that help ensure your command of the road and the pleasure of travelling.



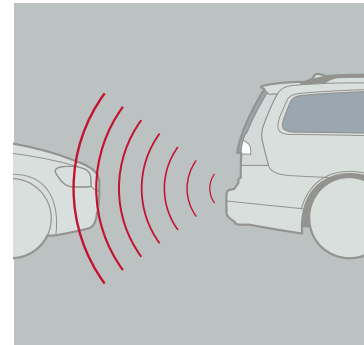
### TECH & SOUND Driver's support



#### Blind Spot Information System (BLIS)\*

BLIS uses rear-facing cameras installed in the door mirrors to keep a lookout on either side of the car. As a vehicle enters your blind spot, this function can alert you with a lamp built in to the front door post – left or right. Together with the door mirrors, this helps you assess the feasibility of a lane change. BLIS is activated once the car exceeds 6 mph, and reacts to almost any type of vehicle from a motorcycle upwards, day or night.

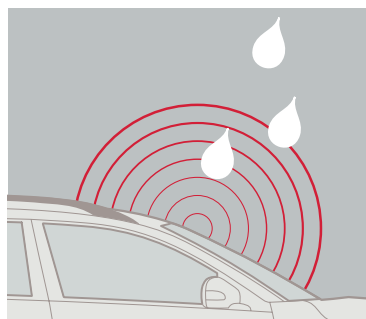
\* Optional



#### Front and rear park assist

Activated when you engage reverse gear, rear park assist helps you when reversing into tight spaces. The audio system is turned down and a pulsating sound from the rear loudspeakers becomes a continuous tone as you approach an obstacle. Front park assist performs a similar function at the front of the vehicle – alerting you via the front loudspeakers. The remaining distance is also shown on the audio display.

\* Included in the optional Convenience Package



#### Rain sensor\*

Once activated, the rain sensor can start the windscreen wipers as soon as it begins to rain or if water splashes onto the windscreen. It can also automatically adapt the intermittent windscreen-wiper function. Its sensitivity can be adjusted via a ring on the wiper stalk.

\* Included in the optional Climate Package



#### Park Assist Camera\*

If the car is equipped with the optional navigation system the park assist camera, helps display what's going on behind your car when reversing. The system uses the navigation screen and a camera discretely located over the license plate. On-screen guiding lines provide extra assistance for smooth parking.

\* Retailer installed Accessory

#### Automatically dimmed inner rear-view mirror

This is a mirror that automatically adjusts itself to deflect the headlamp beams of the car behind you. When there's no light to dazzle you, it automatically readjusts to its normal setting. This can be supplemented with an integrated compass.

#### Electric Parking Brake

The Electric Parking Brake (EPB) makes moving off from steep gradients easier. Once depressed, the control lever automatically releases as the car pulls away.



**Navigation System with RTT (Real Time Traffic) and Map Care\***

Volvo's navigation system is totally integrated with your car. It offers both voice guidance and graphic navigation all the way to your destination. The system is easily controlled from the steering wheel or a remote, and the screen is positioned so you can keep your attention on traffic. Two complimentary Map Care updates are included.

Maps do not cover all areas or all routes within an area. Also constant expansion and rebuilding of the road network mean that the digital map database is not always the latest road information. Always follow relevant regulations and road information.

\* Included in the Optional Multimedia Package



**Rear Seat Entertainment (RSE) dual screen\***

With Volvo's new generation DVD-based RSE dual screen, the rear seat passengers can enjoy a film or play a game – together or separately. Adding a digital TV receiver, passengers can also watch terrestrial TV broadcasts while travelling. Two 8-inch widescreen displays are integrated in the front seat head restraints and provide excellent image quality. Wireless headphones keep things calm in the cabin and you can listen to the music or program of your choice. Via an AUX input, you can also connect external devices such as an iPod®, MP3 player, extra DVD player or a digital camera. The RSE system is an integrated part of the car. It matches the interior perfectly and is available with all upholstery.

\* Retailer installed accessory



**Integrated Bluetooth® handsfree system**

Bluetooth® technology enables a mobile phone to be connected to the infotainment system in your Volvo – wirelessly. Once configured for a mobile phone, the system automatically recognizes your phone as you enter the car. You then operate your phone using the buttons in the steering wheel. As you climb in and out of the car, the system automatically allows you to switch freely from the phone to the handsfree system and back again.



® The Bluetooth word mark and logos are owned by the Bluetooth SIG, Inc. and any use of such marks by Volvo Car Corporation is under license. Other trademarks and trade names are those of their respective owners.



**MP3 compatibility**

There are a number of ways to enjoy MP3 music files in your Volvo. If you'd like to connect your personal MP3 player to the audio system, there's a standard auxiliary audio input in the front center armrest. Volume is conveniently controlled from the steering wheel, center console or rear seat audio console. Choosing the High Performance or Premium Sound audio system, there's also a USB port that allows you to fully integrate your iPod®, MP3 player or USB device with the audio system. Playlists, songs and artists are clearly displayed in the center console, while your player will be charged at the same time. These audio systems also feature a MP3 and WMA compatible CD player. For the Performance audio system, you can add a separate USB and iPod® Music Interface (accessory) to connect your MP3 player. iPod is a trademark of Apple Computer Inc.



**Dynaudio loudspeakers**

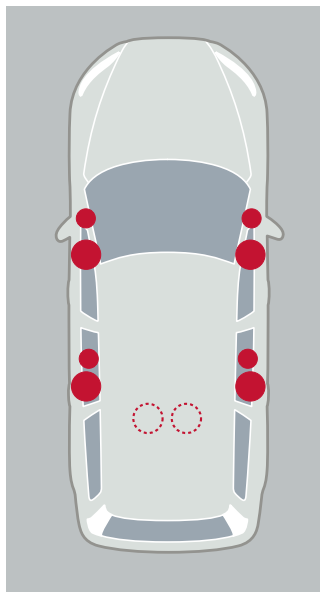
The twelve high-end loudspeakers by the Danish sound specialist Dynaudio in the optional Dynaudio Premium Sound system are powered by a 5x130 W digital amplifier. There are three separate speakers – woofer, tweeter and midrange – in each front door and in the rear doors there is a similar set-up with tweeter and woofer/midrange. Each speaker has a crossover filter to maximize fidelity. The latest generation Dolby® surround system with a center loudspeaker and sound processor recreates authentic sound with a strong sense of presence for everyone in the car – a Volvo world first. The digital class D amplifier features new technology to provide extremely high efficiency, enabling it to generate the most audio power from the least amount of current.



**Sirius satellite radio\***

Satellite radio is now standard in your Volvo. Volvo has joined forces with Sirius to offer an integrated satellite solution that is sure to provide endless listening enjoyment.

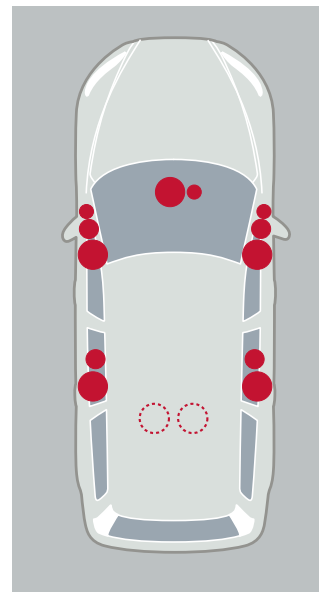
\* Included in the optional Multimedia Package with a complimentary six month subscription



**High Performance**

This is a powerfully versatile system. Each loudspeaker is fitted with a more powerful magnet and a larger coil. In combination with the amplifier, this system promotes excellent transient reproduction and high power – quite simply superb sound. This High Performance system includes:

- In-dash CD
- 4x40 W amplifier
- 8 High Performance loudspeakers
- MP3 and WMA compatible CD player
- AUX and USB input



**Dynaudio Premium Sound System\***

This is our top-of-the line audio system designed for dynamic clarity with the entire sound spectrum. This system features twelve loud-speakers by Danish sound specialist Dynaudio. In addition, Dolby® Pro Logic® II Surround helps tailor a well-balanced audio experience for each occupant. Premium Sound includes:

- In-dash CD
- 5x130 W digital class D amplifier
- Dolby® Pro Logic® II Surround
- 12 Premium Sound loudspeakers by Dynaudio
- MP3 and WMA compatible CD player
- AUX and USB input

Sirius Satellite Radio with complimentary six month subscription\*



Dolby, Pro Logic, and the double-D symbol are registered trademarks of Dolby Laboratories.

\* Included in the optional Multimedia Package

## PACK & LOAD

A world champion in versatility, Volvo has a proud heritage in providing smart solutions for both cargo and passengers – without compromising safety or comfort. So whatever you need to expand your world and the capabilities of your Volvo, here you'll find some practical equipment to make it happen.



### PACK & LOAD Compartment



#### **Three-split 40/20/40 rear seat**

The rear seats feature 40/20/40 splits that provide two distinct seats with a solid armrest in the middle. This armrest can also be raised to provide a middle seat. Lowering the entire center section provides ample space for loading long items. To provide multiple load configurations with a flat load floor, each seat can be folded separately or together.

#### **Foldable front seat backrest**

To help you carry long objects inside your Volvo, the front passenger seat backrest can be conveniently folded flat.

## PACK & LOAD Compartment

### Cargo compartment

The wide tailgate opening facilitates loading and unloading. The cargo volume is 20.3 cubic feet with the rear seatbacks up. This includes up to 1.6 cubic feet cleverly hidden under the floor.



### Power tailgate\*

The tailgate can be opened automatically three ways: with the remote control, using the switch on the dashboard, or by pulling the handle. To help minimize risk of injury, only a switch in the tailgate can be used to trigger automatic closing. Also, an anti-pinch strip around the tailgate opening can detect obstructions to help avoid pinching fingers and things.

\* Included in the optional Convenience Package



### Load compartment mat, reversible and foldable\*

Allows you to maintain the elegant appearance of the load compartment even if you occasionally transport dirty loads. With folded rear seat backrests, just fold out the mat to cover the entire load compartment floor. The mat is reversible and waterproof, with color-keyed textile on one side and plastic on the other.

\* Retailer installed Accessory



### Interior load carrying system

Volvo's innovative loading system features aluminum load rails in the floor with four sliding retractable hooks and attachment panels on both sides of the cargo compartment. Several accessories are available to insure nearly limitless versatility for anchoring and organising your gear.

### Load divider\*

This smart accessory consists of an elastic net and two aluminum rods that can be easily placed in different positions, for example, to separate dirty or wet objects from other cargo, or to protect fragile items.

### Attachment panel with load hooks\*

These hooks help increase cargo area safety and convenience by making it easy to anchor cargo with nets, straps or other accessories. They can be placed where you need them most for maximum flexibility.

### Side net\*

Keep luggage and loose items from shifting in the cargo compartment. With practical side net storage along either side of the load compartment.

### Load securing net\*

Attached to the floor-mounted load loops, this elastic net helps keep your gear securely in place in the cargo compartment. Color-coordinated with the interior.

\* Retailer installed Accessory

## PACK & LOAD Carrying/Towing



### Load cover

Use this retractable load cover to conceal your gear in the load compartment. It's color-coordinated with the interior.



### Steel Cargo Barrier\*

Made out of steel, this helps protect the occupants from unsecured cargo during hard braking. When it's not needed, just raise it parallel to the roof panel. Color-coordinated with the interior.

\* Retailer installed accessory



### Grocery bag holder\*

This integrated holder unfolds from the load compartment floor and keeps your shopping bags and other similar items in place.

\* Included in the optional Convenience Package



### Electric cooler and heater box\*

Beyond keeping your drinks cold in the load compartment, this can be used as a hot box to keep food warm. This connects to the power outlet in the load compartment.

\* Retailer installed accessory



### Complete dirt protector\*

This durable vinyl liner covers the floor, the sides of the rear cargo area and the backs of the seats to protect against grime and water. It is simple to mount. The backrest section of the liner is split to allow the rear seat backrests to be folded down separately. The rear section can also be folded out to cover the bumper.

\* Retailer installed accessory



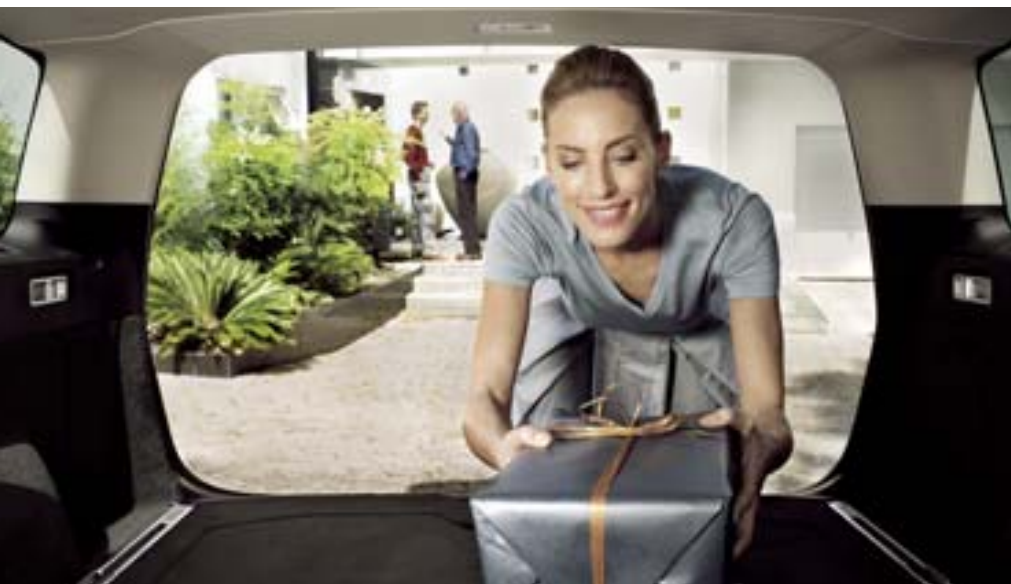
### Roof load carrying system

To help you fully utilize the roof of your Volvo, we've developed a range of versatile load carrying accessories. This system is dimensioned to carry up to 220 pounds. The factory-fitted attachment points in the car's roof make the load carriers easy to fit, and even quicker if your car has roof rails. Various load accessories – such as roof boxes and different holders for bikes, skis, surfboards and kayaks – can be attached to the load carriers to meet your needs. These accessories can be freely combined for flexibility and many are aerodynamically designed to help reduce fuel consumption and wind noise. And most of them can be locked with the same key, using Volvo's One-Key System.



### Square profile hitch

This robust detachable hitch is not only great for towing but can also be used to transport bikes, skis and other loads.



**ACCESSORIES** Volvo's accessories help you make your Volvo XC70 even more suited to your personal needs. They are the only ones that have been tested to meet Volvo's exacting safety, quality and environmental requirements. You can also rest assured they're a perfect match to the technology and design of your Volvo.

**THE VOLVO COLLECTION** Volvo designs speak eloquently of their owners and their values. More than a brand; Volvo is a way of life. That's why we created The Volvo Collection.

Come explore the lifestyle accessories The Volvo Collection has to offer. From apparel to collectibles, from uniquely functional to just plain fun, you'll find they share one thing in common. There's not just a Volvo logo on the outside, there's Volvo quality throughout. View the catalog on the web at [volvocars.us](http://volvocars.us).

**FOR DRIVING FREEDOM**

- Moon roof wind deflector
- Park assist, front and rear
- Parking assistance camera
- Portable navigation system

**FOR YOUR ENTERTAINMENT**

- Rear Seat Entertainment System with Dual DVD player
- Satellite Radio

**FOR PRECIOUS CARGO**

- Booster cushion and backrest
- Child activity bag
- Child mirror
- Padded neck cushion
- Rear center armrest table
- Sun screen, cargo area
- Sun screen, rear doors

**FOR YOUR LEISURE**

- Ashtray, front and rear
- Bike carrier
- Business bag organizer
- Canoe/Kayak carrier
- Cargo box

Cargo management system

- Dirt cover, rear bumper
- Floor mats, rubber
- Grocery bag holders
- Integrated cooler/hotbox
- Load basket, roof mounted
- Luggage compartment mats
- Net pocket, side panel cargo compartment
- Net, luggage compartment floor
- Portable electric cooler/hotbox
- Protective grille steel
- Rear seat guard
- Roof mounted "Load Bar" carrying system
- Seat cushions, rear cargo area
- Ski carriers
- Snowboard carrier
- Sun glasses holder
- Surfboard carrier
- Trailer hitch mounted bike carrier
- Trailer hitch mounted ski carrier
- Trailer hitch, 2" Square profile
- Trailer mirrors
- Tunnel mat, second row seats

**FOR YOUR LOOKS**

- Aluminum wheels
- Footboard, moldings, illuminated
- Interior décor panel kits
- License plate frames
- Locking lug nuts
- Roof spoiler
- Side scuff plate
- Valve stem caps

**FOR UNEXPECTED SITUATIONS**

- Car cover
- Electric engine heater
- First aid kit
- Jumper cables
- Leather care kit
- Mud flaps, front and rear
- Snow chains
- Warning triangle

## PERFORMANCE Specifications

### ENGINE

#### Six-cylinder, in-line, all-aluminum engines.

Double overhead cam-shafts, 24 valves with Variable Valve Timing (VCT). These engines also feature Variable Intake System (VIS) and Cam Profile Shifting (CPS) on the intake camshaft. Electronic engine management system. Three-way catalytic converter with heated oxygen sensor.

These highly compact, in-line, six-cylinder engines meet high expectations in terms of performance, comfort and environmental care. Their smooth running and responsive character provides a relaxed yet responsive drive at all speeds. Advanced engine technology, such as a new intake system, helps increase torque over a wide speed range and ensures power at high rpm. On the T6, twin-scroll turbocharger technology provides extremely quick turbo boost. And depending on your driving style and the situation, the intake valve train automatically switches between economy and performance modes to optimize efficiency. The engines' compact design aids safety performance in a frontal collision. The latest generation of fast response emission control technology ensures that the engines comply with stringent environmental standards such as California's ULEV II.

#### Volvo XC70 T6 AWD (281 hp)

Engine type: 3.0-liter in-line six-cylinder turbo chared engine  
 Max power output: 281 hp at 5600 rpm  
 Max torque: 295 ft./lbs. at 1500 – 4800 rpm  
 Acceleration: 0-60 mph 7.1 sec  
 Top speed: 130 mph  
 Fuel consumption, MPG, mixed cycle: 16/22 – 18 comb  
 Environmental classification: ULEV II  
 Transmission: Six-speed Geartronic automatic  
 Fuel tank: 18.5 US Gallons

#### Volvo XC70 3.2 AWD (235 hp) / 225 hp PZEV

Engine type: 3.2-liter in-line six-cylinder engine  
 Max power output: 235 hp at 6200 rpm  
 Max torque: 236 ft./lbs. at 3200 rpm  
 Acceleration: 0-60 mph 8.4 sec  
 Top speed: 130 mph  
 Fuel consumption, MPG, mixed cycle: 16/22 – 18 comb  
 Environmental classification: ULEV II  
 Transmission: Six-speed Geartronic automatic  
 Fuel tank: 18.5 US Gallons

### DRIVELINE

Electronically controlled all-wheel drive (AWD) with Instant Traction™. A six-speed Geartronic automatic (allowing manual shifting). Power is continuously distributed to all four wheels by Volvo's pre-charged electronically controlled AWD with Instant Traction™. This minimizes wheel spin for immediate acceleration and reassuring stability in all conditions. The six-speed Geartronic—a responsive automatic that's ideal for relaxed driving, tough conditions or towing. This also allows manual gear shifting so you can maintain a lower gear to bring up engine speed, or for the added assistance of engine braking. A special winter setting makes it easier to move off and maintain grip on slippery surfaces. The standard Hill Descent Control (HDC) offers a smooth and controlled hill descent on steep, rough roads using the brake system to control each wheel's speed.

### CHASSIS

Front suspension with spring struts (McPherson), anti-dive and anti-lift function. Active multi-link independent rear suspension. Anti-roll bars front and rear. DSTC (Dynamic Stability and Traction Control).

The Volvo XC70's all-road capability is based on generous ground clearance of 8.2 inches, a low center of gravity and an advanced chassis. The rigid body promotes optimal suspension function and well-balanced handling with a high level of comfort. The front and rear suspensions also interact to provide smooth braking and steering. The DSTC stability system provides assistance if either of the drive wheels begins to lose traction or if a skid is imminent.

### STEERING

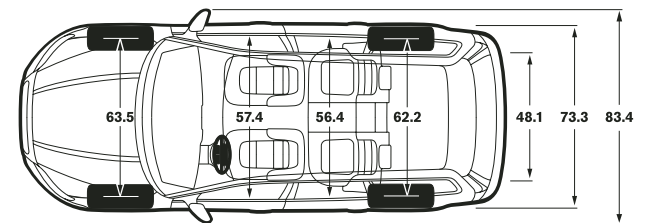
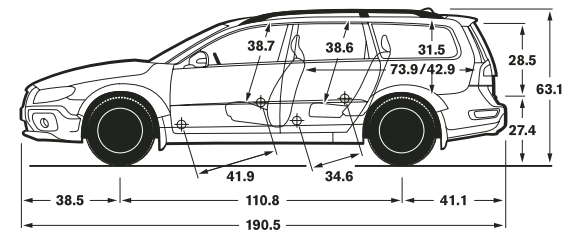
Power-assisted hydraulic rack and pinion steering. Tilt and telescopic steering wheel column. 2.8 turns lock to lock.

Behind the wheel, you can enjoy steering that's both responsive and reassuring at all speeds. The optional speed dependent power steering gives progressively less power assistance the faster you drive. Higher steering precision and enhanced road feedback are easily enjoyed benefits. At lower speeds, added power assistance makes the car even easier to maneuver, for instance when parking.

### BRAKES

Power-assisted anti-lock disc brakes (ABS), ventilated discs front. OHB (Optimized Hydraulic Brakes). HBA (Hydraulic Brake Assist). RAB (Ready Alert Brakes). FBS (Fading Brake Support). EBD (Electronic Brake Distribution) between the front and rear brakes. Diagonal-split braking system. Power Parking Brake (PPB).

Generously dimensioned anti-lock disc brakes and optimized hydraulics help to ensure a short stopping distance in all situations. Furthermore, they withstand tough use without fading. HBA helps you use your brakes to the full in an emergency situation, while RAB anticipates severe braking and prepares for it by moving the brake pads closer to the discs. FBS automatically compensates for the higher pedal forces required after long periods of heavy braking. EBD distributes the braking effect between the front and rear wheels to achieve optimal results according to load and driving conditions. The Electric Parking Brake makes moving off from steep gradients easier. Once depressed, the control lever automatically releases as the car pulls away. It can even be set to engage automatically as you extract the key.







# Taking care of your ownership needs.

## **Volvo Car North America Financing Offers:**

Special offers are available to finance your new Volvo product. Whether you are looking for the convenience of a lease or the pride of owning your Volvo vehicle, our nationwide network of retailers and authorized financial service providers are ready to assist you with all your financing needs. Please contact your local retailer for details, and available financial products that suit your individual needs.

## **On Call roadside assistance**

Whenever you need us, we're just a phone call away. Our nationwide network of retailers and authorized service providers are ready to assist. Whether you require roadside assistance or maps and routing information for your next trip, refer to your On Call Card and dial 1-800-63-VOLVO – anytime, day or night. Your complimentary four-year membership activates the moment you become a Volvo owner.

## **Volvo new car warranty**

Your new car warranty provides comprehensive coverage for four years or 50,000 miles, whichever occurs first. Additional warranties cover corrosion, seat belts, the supplemental restraint system, emission systems, genuine Volvo replacement parts and genuine Volvo accessories. Should you encounter any problem with your Volvo, simply contact the nearest retailer for assistance. Where your warranty ends, Volvo Increased Protection (VIP) plans begin. To purchase the additional protection of a VIP plan, contact your local retailer.

## **Complimentary Factory Scheduled Maintenance**

Volvo is committed to a premium ownership experience for its customers. To further enhance your ownership experience, all 2010 model year Volvo's sold new through Volvo retailers in the United States will include Complimentary Factory Scheduled Maintenance. This program provides scheduled maintenance coverage for the first 3 years or 36,000 miles, is designed to compliment your Volvo warranty, and will help ensure trouble free operation of your Volvo. Coverage includes factory recommended maintenance including oil and filter changes, checks and adjustments as listed in your Warranty and Maintenance Records Information booklet, for the first four maintenance services at intervals of 7,500, 15,000, 22,500 and 30,000 miles

Service must be performed within 1,500 miles before or after each scheduled interval. Coverage is limited to scheduled maintenance items listed in the 2010 model year Warranty and Maintenance Records Information booklet. Normal wear items such as brake pads and wiper blades are not covered under the Complimentary Factory Scheduled Maintenance. An authorized retailer must perform maintenance. Offer is transferable. Optional Factory Scheduled Maintenance program upgrades are also available that will allow you to customize coverage to meet your driving needs. See your Volvo retailer for details.

## **Volvo genuine service**

The best way to ensure superior performance year after year is to bring your Volvo to your authorized retailer for regular maintenance. Our service advisors and factory-trained technicians are uniquely qualified to maintain your automobile. With the aid of advanced Volvo diagnostics, they follow all prescribed factory maintenance outlined in your service interval manual. Genuine Volvo Service is our ongoing commitment to you: to keep your Volvo performing smoothly long after other cars have given up.

## **Volvo mobility program**

The goal of the Volvo Mobility Program is to assist persons with physical disabilities or hearing impairment. For those with exceptional transportation needs, this can be facilitated within the extraordinary comfort and safety of a specially adapted Volvo. For additional information on this program, please contact the Volvo Mobility Program Headquarters at (800) 803-5222 or visit [www.volvocars.us/mobility](http://www.volvocars.us/mobility). TTY users are invited to call 1-800-833-0312.

## **Personal shopper**

The Volvo Personal Shopper is dedicated to providing you with a whole new level of shopping convenience. Whether you'd like help identifying the Volvo model that best fits your lifestyle, detailed information on any Volvo model, or a comparison against the competition, Volvo is there to help. We can arrange a Guest Drive for you at your nearest Volvo Retailer. So make the most of your shopping time and call the Volvo Personal Shopper at 1-800-550-5658. (U.S. only)

## **VOLVO OVERSEAS DELIVERY.**

Volvo Overseas Delivery offers a unique way to buy your new custom-built car as well as a unique way to see more of Europe. And when you're done traveling, bring the pleasure of driving a Volvo back home. Purchase any new Volvo as part of the Volvo Overseas Delivery Program and enjoy all this – and more:

- Attractive pricing on US models.
- Two complimentary round-trip tickets with Scandinavian Airlines.
- One free hotel night in Gothenburg, Sweden, the home of Volvo.
- An exciting Volvo Factory Tour or a visit to the new Volvo Brand Experience Center.
- An exclusive VIP delivery experience at the Volvo Factory Delivery Center.
- The opportunity to explore Europe in the comfort and safety of your own Volvo, either with one of our spectacular tours or on your own.
- Extensive complimentary home shipment services. Just leave your car with us. We'll ship it to you the convenient way while you relax and enjoy your complimentary flight back home.

Can you think of a better way of traveling overseas and making your souvenir part of an unforgettable experience? If you would like to know more, contact your local Volvo retailer, our Customer Care Center (800) 631-1667, or visit [www.volvocars.us/mybagsarepacked](http://www.volvocars.us/mybagsarepacked)

## **VOLVO CARS MILITARY/DIPLOMAT/EXPATRIATE SALES. FOR YOU LIVING ABROAD.**

Sometimes life abroad offers exceptional benefits. Such as buying a new tailor-made Volvo on very special and rewarding terms. Whether you are traveling for pleasure or are in a professional, diplomatic or military post outside your home country, turn to Volvo for a great deal. For US Military personnel posted overseas our authorized military agents outside the US offer:

- Great savings compared with Stateside pricing.
- Professional assistance with all legal formalities and paperwork.
- Four-year warranty coverage also outside the US (US and Canadian specifications)
- US specifications – built to meet legal requirements in all US states.
- No US import duty with PCS orders, for US military personnel taking delivery overseas.
- Included shipping & Marine Insurance, delivery to an authorized Volvo retailer of your choice in the USA. US diplomats & military personnel stationed abroad for more than 140 days & non-US diplomats (depending on status) are normally exempted from customs import duty.
- Delivery to a Volvo military agent close to your base or assignment overseas.
- Three years valid Volvo Home Shipment from authorized drop-off points in Europe to an authorized US Volvo retailer of your choice included.
- More than 20 drop-off points in Europe.
- The option of VIP factory delivery in Sweden or delivery to selected major cities in Europe.
- The option of our special Cruise & Collect package with Stena Line ferries (German market).
- The benefit of the Volvo Assistance Europe scheme at no extra cost.

Taking advantage of the savings, benefits and convenience of Volvo's international programs is easy. Volvo Cars Military Sales, Volvo Cars Diplomat Sales and Volvo Cars Expatriate Sales are professional and global organizations with one goal – to make it advantageous and convenient for you to buy your new car when living abroad.

For Military/Diplomat/Expatriate sales while in the US, contact your local Volvo retailer, our Customer Care Center (800) 631-1667 or visit [www.volvocars.us/mybagsarepacked](http://www.volvocars.us/mybagsarepacked)

# Meet the family.

## S



**Volvo S40** The compact and energetic sedan.



**Volvo S80** The premier sedan, meticulously engineered for superior driving comfort.

## V



**Volvo V50** The Sportswagon – flexible, compact and full of zest.



**Volvo V70** The genuine family wagon – highly competitive yet comfortably versatile.

## XC



**The new Volvo XC60** A sporty coupe and a capable all-roader fused into a Swedish crossover experience.



**Volvo XC70** The rugged yet stylish all-roader.



**Volvo XC90** The versatile SUV that takes you anywhere with grace.

## C



**Volvo C30** The compact and charismatic SportsCoupe.



**Volvo C70** A convertible when you want it.



**Volvo C70** A coupe when you need it to be.

## TO LIVE LIFE IS TO CARE ABOUT IT.

Every moment in a Volvo is a moment designed to celebrate life. A life full of twists and turns, ups and downs; the little things as well as the big ones. Of course, to live life to its fullest isn't just about you; caring for others is important as well.

For more than eighty years we have helped save lives on roads around the world. Nevertheless, when it comes to improving automotive safety, we will never be satisfied. And while we're seeking new solutions, our existing safety systems are preventing many accidents from happening and providing some real protection when they do.

Our passion for life means looking after our children's children, too. Which is why we try to balance the needs of our company with those of society. With this bigger picture in mind, we develop engines and technology that have less impact on mother earth. This approach also explains why we pay so much attention to your immediate environment – in the car. Simply put, we care about you – and the whole circle of life.

Volvo. for life



**VOLVO**  
Volvo Car Corporation

**WWW.VOLVOCARS.US**

Specifications, features, and equipment shown in this catalog are based upon the latest information available at the time of publication. Volvo Cars of North America, LLC reserves the right to make changes at any time, without notice, to colors, specifications, accessories, materials, and models. For additional information, please contact your authorized Volvo retailer. © 2009 Volvo Cars of North America, LLC. Printed in USA on 100% recyclable paper. **MY10G**