



VOLVO  
**XC90** 2004

**VOLVO**  
for life





"IF THE PRODUCT IS NOT FUNCTIONAL, IT CAN'T BE BEAUTIFUL."  
(THE VOLVO DESIGN PHILOSOPHY)

VOLVO XC90	2
VOLVO VEHICLE ARCHITECTURE	4
DESIGNED HARMONY	6
COMFORT. CONFIDENCE. CONTROL.	8
VERSATILITY	12
THE RIDE	14
ALL-WHEEL. ALL-WEATHER. ALL-ROAD.	16
SAFETY AND STABILITY	18
VOLVO SAFETY SYSTEMS/ PERSONAL SECURITY	20
COMPATIBILITY	22
ENVIRONMENTAL CARE	24
YOUR CHOICES	26

[WWW.VOLVOCARS.US](http://WWW.VOLVOCARS.US)





## **VOLVO XC90**

THE VOLVO XC90 IS A NEARLY PERFECT BALANCE OF DESIGN, CAPABILITY, AND SAFETY ENGINEERING. IT IS MUSCULAR, YET NOT AGGRESSIVE. ROOMY INSIDE, BUT COMPACT OUTSIDE. IT IS UNMISTAKABLY RUGGED, YET HANDLES LIKE A FINE EUROPEAN LUXURY VEHICLE. IT PAMPERS WITH LUXURY AND REFINEMENT, BUT DOES NOT SPOIL. IT IS DISTINCTIVE, YET HIGHLY VERSATILE. AND IT IS A TRUE SPORT UTILITY VEHICLE, BUT IT



BRINGS VOLVO SAFETY TO THE SUV SEGMENT. BECAUSE WHEN YOUR VEHICLE HAS THE RIGHT FEEL, YOU EXPERIENCE A SPECIAL KIND OF FREEDOM. TO EXPLORE. ENJOY. AND PURSUE ADVENTURE ON YOUR TERMS. VOLVO XC90. THE FIRST OF THE NEW GENERATION OF SUVs.

## VOLVO VEHICLE ARCHITECTURE

THE VOLVO XC90 INTRODUCES AN ENTIRELY NEW APPROACH TO SUV THINKING: VOLVO VEHICLE ARCHITECTURE. INTERIOR SPACE HAS BEEN MAXIMIZED WITHOUT CREATING AN OVERLY LARGE EXTERIOR. THE ENGINE IS TRANSVERSELY MOUNTED, AND SEATING POSITIONS HAVE BEEN MOVED FORWARD. THIS FREES UP ENOUGH VOLUME TO ALLOW FOR LOTS OF PERSONAL SPACE, A THIRD ROW OF SEATS IN THE SEVEN-PASSENGER MODEL, GENEROUS CARGO ROOM, AND WIDE ENERGY-ABSORPTION ZONES. THE RESULT: AN SUV THAT IS ROOMY ON THE INSIDE, COMPACT ON THE OUTSIDE, AND THAT SACRIFICES NOTHING IN TERMS OF SAFETY.



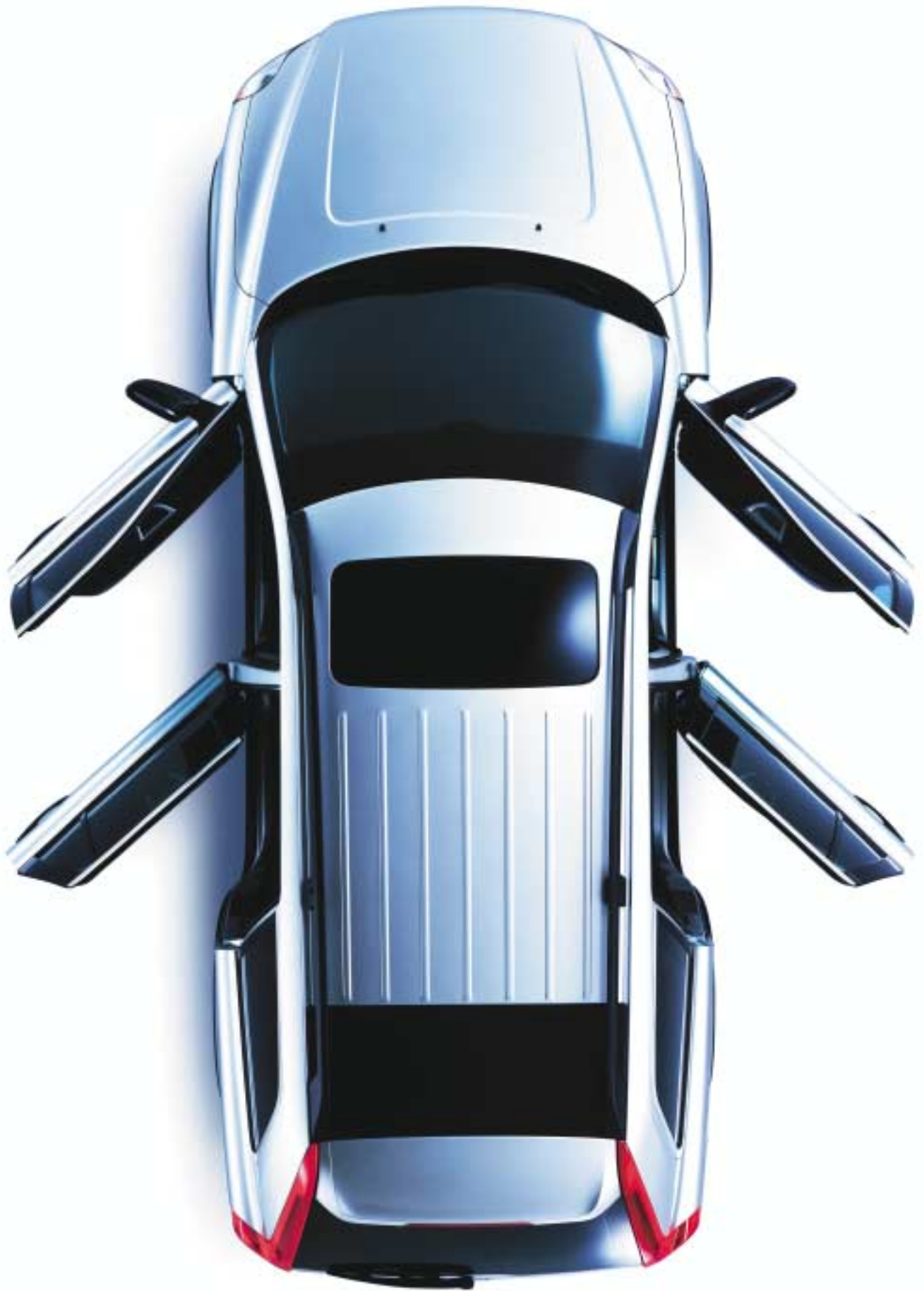
Traditional in-line design



Traditional "V" design



XC90 Transversely mounted engine creates maximum interior space.









## DESIGNED HARMONY

THE VOLVO XC90 IS STRIKINGLY BOLD AND ATHLETIC, BUT NEVER OVERBEARING. ITS GRACEFUL LINES AND COMPACT EXTERIOR TASTEFULLY COMPLEMENT ANY ENVIRONMENT. OVERALL LENGTH IS ONLY 188.9 INCHES (480 CM) – REMARKABLE FOR A VEHICLE THAT CAN TRANSPORT UP TO SEVEN PEOPLE IN COMFORT. HIGH GROUND CLEARANCE, LARGE GRAPHITE BLOCKS IN FRONT, AND MUSCULAR WHEEL WELLS PROVIDE STRONG SUV CHARACTER. DISTINCTIVE REAR REFLECTORS, BROAD SHOULDERS, AND UNIQUE GRILL TREATMENT MAKE IT UNMISTAKABLY A VOLVO.



## COMFORT. CONFIDENCE. CONTROL.

CERTAIN TRIPS REMAIN A MEMORY FOR LIFE. OTHER TRIPS ARE SIMPLY NECESSARY. THE VOLVO XC90 ENHANCES BOTH COMFORT AND SAFETY – FOR A CONVENIENT AND ENJOYABLE LIFE ON THE MOVE.

Shown with Climate Package and DVD navigation system



The cabin is easy to enter and exit. In the driver's seat, you assume a command position, with an unobstructed view and all controls angled toward your field of vision. All cockpit details are designed to give you control and instantaneous feedback. World class technology is at your fingertips – you operate the most important functions such as the audio system, cruise control and optional navigation system without taking your hands off the wheel. The center console panel includes a powerful

160 watt audio system with 8 speakers, that can be upgraded with different options. And if you choose Volvo's most sophisticated audio system with state-of-the-art Premium Sound and the latest generation Dolby Pro-Logic II® surround sound system with 305 watts and 12 speakers, you and your passengers can enjoy an audio experience far beyond the ordinary.

Thoughtful details abound. It all adds up to an extraordinary feeling of confidence, control, and harmony.



**DRIVER'S SEAT**

The driver's seat is a masterpiece of ergonomics and comfort. It features eight-way power adjustments with controls that are large and easily accessible. The seat also has a memory function for up to three drivers. Just turn the key, and the seat automatically goes back to the position you last left it in.



#### **LUXURY, HARMONY AND CONSIDERATION**

The inside of the XC90 is a pleasure to experience, offering a feeling of spacious, quiet luxury. Exclusive dual-textured leather surrounds you. Large windows offer a panoramic view of the landscape. The standard XC90 is a five-passenger vehicle, but, with the addition of a third row of seats,\* seven passengers can be transported in first-class comfort. All passengers face forward in theater-style seating – each row a little higher than the last – for better views all around. Every seat features three-point seat belts, pre-tensioners, and head restraints. Second-row seats are set in a 40/20/40 configuration, and can be individually adjusted fore-aft in the seven-seat version. The seats themselves are among the most ergonomic and comfortable in the world.

The Dual Zone Electronic Climate Control system (ECC) maintains the set temperature inside the car and can be adjusted individually for the driver and passenger sides. A built-in cabin air filter prevents dust, pollen and fumes from entering the passenger compartment. Add an optional Interior Air Quality System, and the air you breathe inside the car is actually cleaner than the air outside.

\*Third-row seats are designed for children and small adults only.



Interior shown with Premium, Climate, and Versatility Packages



**THIRD ROW COMFORT**

Back seat passengers, whether in the second or third row, are well served in the Volvo XC90. In addition to their own available headphone outlets, they can enjoy a rear seat DVD entertainment system (available late 2003). Third row passengers stay as comfortable as everyone else with their own climate controls and C-pillar air vents.



## VERSATILITY

THE XC90 IS DESIGNED TO LET YOU GO YOUR OWN WAY, WITH AN UNCANNY ABILITY TO SUIT YOUR CHANGING NEEDS. ONE MOMENT YOU CAN BE TRANSPORTING UP TO SEVEN PEOPLE IN COMFORT. THE NEXT, WITH ALL PASSENGER SEATS FOLDED DOWN, YOU'VE GOT A FLAT LUGGAGE COMPARTMENT OVER 9.5 FEET LONG. WHETHER YOU'RE ROUGHING IT, GOING OUT FOR THE EVENING, OR SOMETHING IN BETWEEN, A NEW FACET OF THE XC90 WILL EMERGE AT JUST THE RIGHT MOMENT TO HELP YOU DO IT WITH APLOMB.



### CARGO

Much planning went into the Volvo XC90 to maximize cargo space and make loading and unloading the vehicle easy. All passenger seats, including the front one, fold flat. Third-row seats in the seven-passenger model are quickly lowered right into the floor. Head restraints also fold out of the way. Cargo capacity is deep, even when third-row seats are in place.

### INTEGRATED CHILD BOOSTER SEAT

The middle seat of the second row can be fitted with an integrated child booster seat (included with the Versatility Package) and may be moved forward until it is almost between the front seats.

### SPLIT TAILGATE

The XC90 tailgate is strong, lightweight, and perfectly balanced, so it's easy to open and close. The bottom section is at an ideal height for loading and is level with the interior floor, so things slide right in. It can also be used as a convenient platform for accessing roof-mounted luggage, or hosting a tailgate party with a touch of Volvo elegance.

Vehicle shown with Versatility Package



VOLVO  
XC90

XC90  
AWD



## THE RIDE

IF EVER THERE IS A PLACE WHERE THE HARMONY OF VOLVO VEHICLE ARCHITECTURE IS DRAMATICALLY REALIZED, IT IS IN THE RIDE AND HANDLING OF THE XC90. IT IS BUILT ON A LUXURY PLATFORM FOR AN EXCEPTIONALLY REFINED ALL-ROAD DRIVING EXPERIENCE.

Vehicle shown with aluminum step-up bar (accessory)



The AWD System and the generous ground clearance of 8.9 inches, add to the vehicle's get-you-there ability in all road conditions.



Power is in your hands. With the remarkable Geartronic transmission, you can switch on the fly between fully automatic and manual shifting.

The Volvo XC90 is exceptionally rewarding to drive, regardless of the road and weather. A smooth, powerful five- or six-cylinder turbo engine and predictable response are at the heart of the XC90 driving experience. The low center of gravity, balanced weight distribution and wide stance contribute to stable road behavior. Add a highly torsionally rigid body and one of the most refined chassis in the automotive world – and the result is exceptionally good roadholding. Multilink rear

suspension provides superior ride comfort and consistent road manners.

Driving stability is further enhanced by the electronically controlled AWD system, which is standard on the XC90 T6. Power is automatically distributed between the front and rear wheels within a fraction of a second for the best possible traction on all types of road surfaces. The system works in harmony with the engine, the active chassis control systems, and the anti-lock brakes to help you stay in control.

Vehicle shown with Versatility Package



# ALL-WHEEL. ALL-WEATHER. ALL-ROAD.

## WHEN THE ROAD IS DRY

The electronically controlled all-wheel drive system\* (AWD) is optimized to provide superior roadholding and tractive force under all driving conditions. It responds extremely quickly, making it possible to balance understeering and oversteering tendencies with exceptional precision.

For example, during rapid acceleration or fast cornering, power is seamlessly distributed between the front and rear wheels in a fraction of a second to give you maximum driving stability. Behind the wheel, you won't even be aware that the AWD system is at work – you'll simply enjoy that superb feeling of total control.

The AWD system is controlled by an electronic management system that constantly monitors the speed of the wheels, throttle position, engine torque, engine speed, the optional DSTC system, and the brakes in order to always respond optimally to current driving conditions.

## WHEN THE ROAD IS SLIPPERY

The advantages of Volvo's AWD system are particularly noticeable on slippery roads. Since the pair of wheels with the best traction always receives most power, the vehicle is outstandingly stable. And making your way on slippery road surfaces is no problem. The AWD system provides immediate power to the wheels that are needed to help get started and maintain control even under difficult conditions. At low speeds, Volvo's anti-spin system, TRACS, ensures that the wheel with the best traction gets the most power.

\*The AWD-system is standard in the XC90 T6 and optional in the XC90.



Normally, the front wheels get nearly all of the engine's power.



If the front wheels show any tendency to spin, the AWD system responds by redistributing power for maximum stability.



If one or both wheels on one side of the vehicle spin, more power goes instantly to the wheels with better traction.



When braking, the car disengages drive to the rear wheels the instant you touch the brake pedal, thereby maximizing control and roadholding.



If you carry heavy loads, the rear wheels receive more power to maximize driving stability.

## SAFETY AND STABILITY

IT IS PART OF VOLVO'S GENETIC CORE TO INFUSE SAFETY INTO EVERYTHING WE DO. NEVER MORE THAN IN THE XC90, WHERE A NUMBER OF SAFETY CHALLENGES INHERENT TO SUV DESIGN WERE MET. HOWEVER, OUR MOST INNOVATIVE MEASURE – AND THE FIRST OF ITS KIND IN THE WORLD – IS VOLVO ROLL STABILITY CONTROL. KNOWING THAT YOUR SAFETY IS ENHANCED WILL ALLOW YOU TO ENJOY YOUR XC90 TO THE FULLEST.



To help reduce the risk of a rollover, the XC90 is equipped with an active stability-enhancing system known as Roll Stability Control (RSC). At the heart of the system is a gyroscopic sensor that monitors the vehicle's angle. If it senses that the vehicle is starting to tip, the Dynamic Stability Traction Control (DSTC) is instantly activated. Engine power is reduced, and just enough braking is applied to one or more wheels to help regain stability.



In the unlikely event that the vehicle does roll over, the inflatable side curtain (IC) is deployed to help protect the heads of occupants and help keep the occupants of the outboard seats from being thrown from the vehicle. At the same time, the seat belt pre-tensioners are activated in all occupied seats, keeping you firmly in place.



A powerful anti-lock brake system featuring ventilated discs all around and Electronic Brake Assistance (EBA) are always at your disposal.

The Volvo XC90 raises SUV safety to a new level. High seats and superb visibility make it easier to look ahead and avoid dangerous traffic situations. An advanced chassis and powerful brakes help you maintain control in all situations. Electronically controlled all-wheel drive and active stability systems increase the margins of safety even further, for instance if you are driving on slippery roads or are forced to take sudden evasive action. If the vehicle

shows any tendency to start skidding, the DSTC (Dynamic Stability and Traction Control) instantly applies the brakes to one or more wheels to help you stabilize the vehicle and regain control. RSC further enhances stability. And if an accident can't be avoided, you're protected by the same safety systems that help save lives in all of Volvo's other cars – and by Volvo's roll over protection system (ROPS).



"CARS ARE DRIVEN BY PEOPLE. THE GUIDING PRINCIPLE  
BEHIND EVERYTHING WE MAKE AT VOLVO, THEREFORE,  
IS – AND MUST REMAIN – SAFETY."

ASSAR GABRIELSSON AND GUSTAF LARSON,  
THE FOUNDERS OF VOLVO.



# VOLVO SAFETY SYSTEMS

AT VOLVO, WE BELIEVE THAT IT'S THE WHOLE RATHER THAN THE PARTS THAT DETERMINES HOW SAFE A VEHICLE IS. THE XC90 IS VERY MUCH THE PRODUCT OF THIS BELIEF – EVERYTHING WORKS TOGETHER HARMONIOUSLY TO HELP KEEP YOU OUT OF HARM'S WAY.

## VISIBILITY

Command seating positions, theater-style seating, and large windows provide superb visibility and make it easier to look ahead and avoid dangerous traffic situations.

## SAFETY CAGE

For added toughness, the pillar and roof structure are reinforced with high-strength boron steel, which is four to five times stronger than conventional steel.

## PEDESTRIAN SAFETY

The front features clean, gentle, smooth lines, flush headlights, and low engine position to reduce danger to pedestrians, cyclists, and other unprotected road-users.

## ENERGY-ABSORBING ZONES

Front and rear energy-absorbing zones help to dissipate and distribute incoming collision forces.

## CRASH COMPATIBILITY

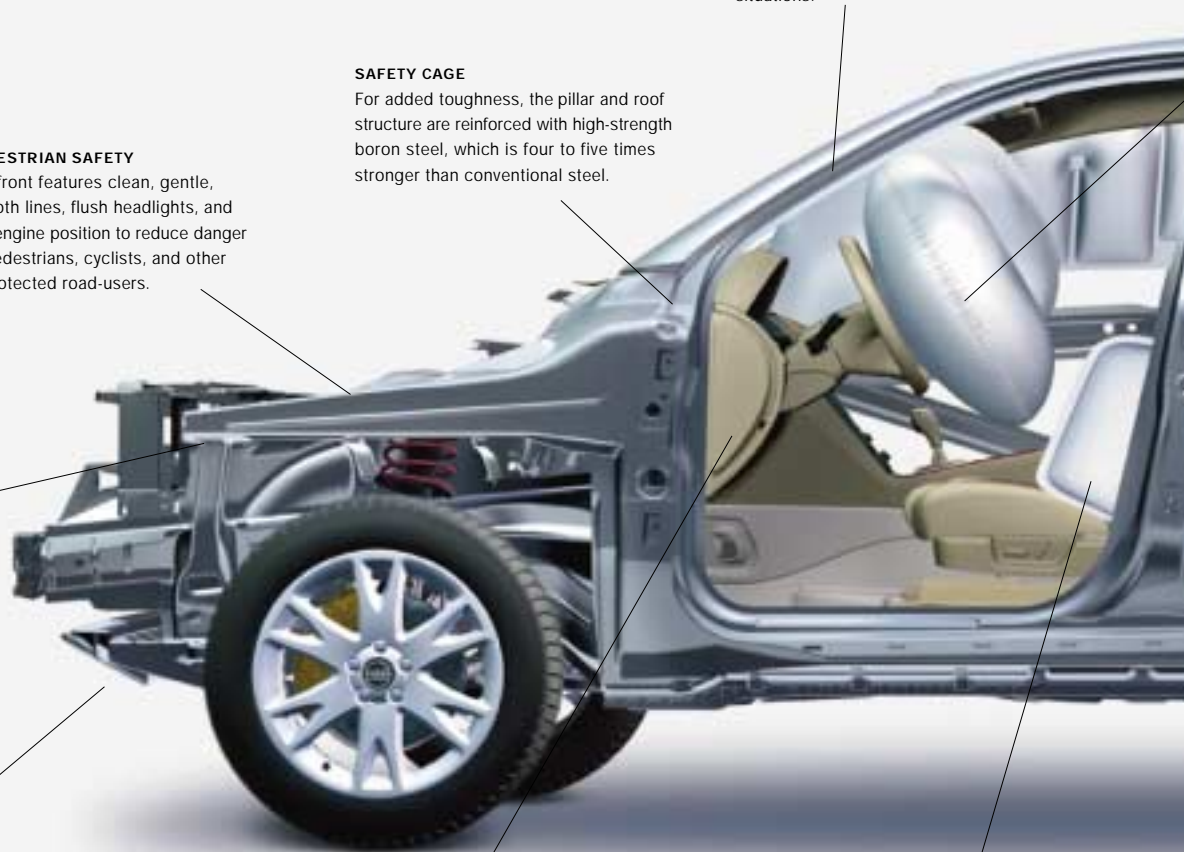
To reduce damage to a smaller vehicle during a collision, the front subframe includes a lower cross-member. It's designed to engage the oncoming vehicle's protective structure and activate its impact zone, so occupants can receive maximum protection.

## ENERGY-ABSORBING INTERIOR

All the panels and door sides are padded with energy-absorbing materials to help reduce the risk of injury to the car's occupants.

## SIDE-IMPACT PROTECTION (SIPS)

Volvo's patented system helps reduce the risk of serious injury when the impact is from the side. Side members, roof pillars, roof, doors, and cross-members are specially reinforced to reduce the deformation of the side of the vehicle. The system works in conjunction with side air bags and inflatable side curtains.



## PERSONAL SECURITY

AT VOLVO, PROVIDING FOR YOUR PERSONAL SAFETY IS A NATURAL EXTENSION OF OUR DEVOTION TO YOUR DRIVING SAFETY. FOR THIS REASON, A NUMBER OF IMPORTANT FEATURES HAVE BEEN ADDED TO THE XC90 TO HELP YOU AVOID THREATENING SITUATIONS.

#### DUAL-THRESHOLD AIR BAGS

Dual-stage air bags deploy differently and with varying levels of force depending on the severity of the crash. This helps to ensure maximum protection while saving a properly belted occupant from being exposed to unnecessary air bag deployment.

#### ROPS ROLL-OVER PROTECTION SYSTEM

RSC (Roll Stability Control) helps you keep control. If the vehicle nonetheless rolls over, the IC inflatable side curtains and seat belt pre-tensioners are triggered by an electronic sensor. The windshield frame, roof and door pillars all feature extra reinforcement to serve as a roll-over protection cage.

#### INFLATABLE SIDE CURTAINS (IC)

Curtains inflate in a side-impact or rollover accident to help protect the heads of occupants. They extend the full length of the vehicle to protect passengers in the third row – a Volvo exclusive. For added safety during multiple collisions, they stay inflated for up to 5 seconds.



#### THIRD-ROW SAFETY

These seats feature three-point seat belts with pre-tensioners, head restraints, and inflatable side curtain protection. Generous space behind the third row helps dissipate collision forces. Seats are just above the rear axle, the best position for side-impact safety. The XC90 is currently the only SUV to include all of these features for third-row passengers.

#### WHIPLASH PROTECTION SEATING SYSTEM (WHIPS)

If the vehicle is struck from behind, this front-seat system is designed to reduce the violent energy transfer that often produces serious neck and back trauma. A Volvo world exclusive.

#### SEAT BELTS WITH PRE-TENSIONERS

All seats have head restraints and three-point seat belts with pre-tensioners. In a crash, the seat belts are pulled taut to help keep passengers properly positioned. The XC90 is currently the only SUV to offer them on every seat.

#### LOAD SAFETY

Strategically placed eyelets in the luggage compartment floor allow you to secure cargo items safely.

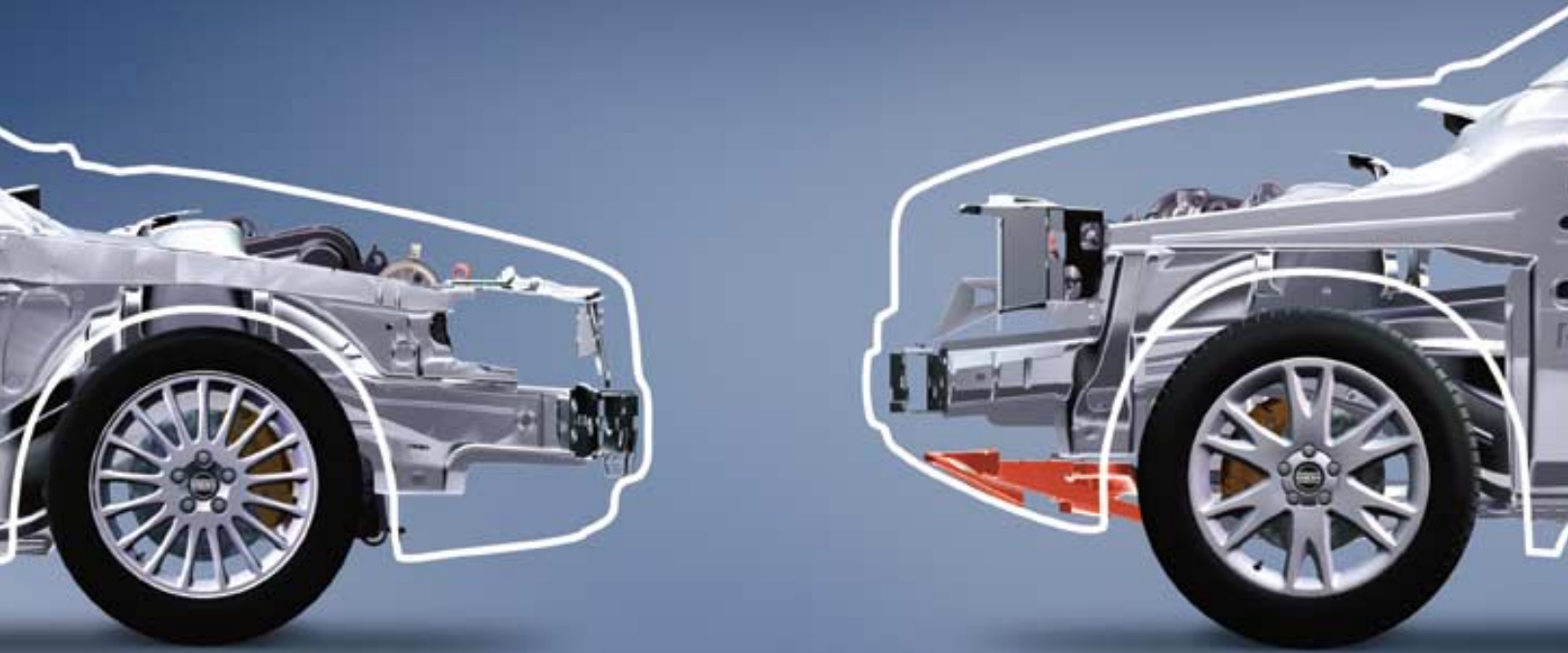
The XC90 expands the scope of personal protection. Safe Approach and Home Safe lighting with ground lighting in the side-view mirrors illuminates the area around the car and provides greater safety when approaching or leaving the vehicle. An electronic immobilizer

and door locks that withstand most break-in attempts help protect against theft. A security system with sensors in the doors, hood and tailgate activate an alarm if someone should ever try to break into the vehicle. And in the event of trouble – press the panic button in

the remote control and the alarm is sounded. For an even higher level of personal safety you can add anti-smash and grab laminated side windows and a HomeLink remote garage door opener. Lockable wheel bolts are a simple way deter the theft of your alloy wheels.







## COMPATIBILITY

AT VOLVO, OUR CONCERN FOR SAFETY EXTENDS BEYOND THE PEOPLE WITHIN OUR VEHICLES TO THOSE ON THE OUTSIDE AS WELL. SPECIAL FEATURES WERE INCORPORATED TO HELP PROTECT PEOPLE WHO MAY BE INVOLVED IN A COLLISION WITH THE XC90 – WHETHER THEY ARE OCCUPANTS OF ANOTHER VEHICLE, OR PEDESTRIANS.

### OCCUPANTS OF OTHER VEHICLES

A lower cross-member has been added below the front bumper to help engage the front structure of a smaller vehicle in the event of an accident. The safety systems are therefore activated in a way the other vehicle manufacturer has intended. This helps prevent "ride over," and serious injuries may be avoided.

### UNPROTECTED ROAD USERS

The XC90 is designed to help reduce the risk of injury to people such as pedestrians and bicyclists. The front is gently rounded, without protruding parts, and the headlights are flush with the body. What's more, the engine is positioned low to put space between it and the hood. This allows the hood to serve as an impact zone, thus helping to dissipate the force of a collision.

Vehicle shown with Climate Package and Premium Package

## ENVIRONMENTAL CARE

CARING FOR THE ENVIRONMENT IS IMPORTANT TO YOU AND TO VOLVO. REST ASSURED THAT THE LATEST ENGINE TECHNOLOGY AND ANTI-POLLUTION ENGINEERING HAVE BEEN BROUGHT TOGETHER TO SET NEW ENVIRONMENTAL STANDARDS IN THE SUV CATEGORY. FOR YOU. YOUR FAMILY. AND FOR THE GOOD OF ALL.

### FUEL ECONOMY AND EMISSIONS

Both available engines are crafted of lightweight aluminum and feature Volvo's latest low-friction technology for top-class fuel efficiency. Continuously variable valve timing (CVVT) and three-way catalytic converters allow the XC90 to meet or exceed stringent Ultra Low Emission Vehicle (ULEV) standards.

### RECYCLABLE

Nearly all of the sheet metal and other metals in the XC90 can be recycled. In fact, about 85 percent of the vehicle's total weight is recyclable.

### INSIDE AIR

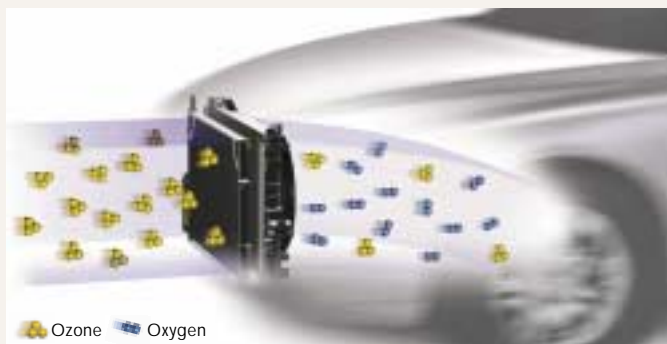
The optional Interior Air Quality System (IAQS) removes pollen and unpleasant odors from incoming air. If pollutants are detected outside the vehicle, interior air is temporarily recirculated to maintain air quality.

### CERTIFIED MATERIALS

Most interior fabrics and leather have been rigorously tested to ensure that they are free from hazardous and allergenic substances. Leathers are tanned using natural plant materials.

### CLEANS AS YOU DRIVE

Ozone, so important to the planet's health, is actually a pollutant when found at ground level. The radiator of the XC90 has a special coating, PremAir®, which converts up to 75 percent of the ozone it encounters into oxygen – so you actually help clean the air when you drive. In addition, the XC90 is finished with water-based paints. This results in clean air both inside and outside the factory.



PremAir® helps reduce ground level ozone as you drive – an important part of Volvo's global environmental commitment.

PremAir® is a registered trademark of Engelhard Corporation.









## YOUR CHOICES

CHOOSING THE VOLVO XC90 IS A HIGHLY PERSONAL MATTER. YOUR VOLVO IS AVAILABLE IN A NUMBER OF MODELS, EACH WITH ITS OWN ENGINE, POWERTRAIN, AND EQUIPMENT LEVEL. THIS MAKES IT EASY TO CHOOSE THE XC90 THAT'S JUST RIGHT FOR YOU. AND WHATEVER MODEL YOU CHOOSE, YOU CAN ENHANCE THE EXPERIENCE WITH ONE OR MORE OF VOLVO'S OPTION PACKAGES AND SPECIALLY-DESIGNED OPTIONS AND ACCESSORIES.

THE XC90 SELECTION	28
STANDARD FEATURES	30
OPTION PACKAGES	31
FEATURES AT A GLANCE	32
AUDIO AND ENTERTAINMENT	34
FACTORY-INSTALLED OPTIONS	36
ACCESSORIES	37
INTERIOR SELECTIONS	38
EXTERIOR SELECTIONS	40
TECHNICAL SPECIFICATIONS	41
CARE BY VOLVO	43

[WWW.VOLVOCARS.US](http://WWW.VOLVOCARS.US)

## **THE XC90 SELECTION**

IN A VOLVO XC90, THE POWERTRAIN AND CHASSIS INTERACT TO PROVIDE A HARMONIOUS BALANCE BETWEEN RESPONSE AND COMFORT. THE SMOOTH, POWERFUL FIVE OR SIX-CYLINDER TURBO ENGINE GIVES YOU INSTANT ACCESS TO ITS FULL POWER POTENTIAL. LOW INTERNAL FRICTION AND THE VERY LATEST ENGINE TECHNOLOGY, FEATURING VARIABLE VALVE TIMING, COMBINE GOOD PERFORMANCE WITH MODERATE FUEL CONSUMPTION, WHILE AT THE SAME TIME MEETING STRICT EMISSIONS STANDARDS.



#### **VOLVO XC90 T6 AWD (268 BHP)**

The all-wheel drive Scandinavian flagship SUV is powered by a remarkably smooth in-line six-cylinder 2.9-liter turbo engine. The engine pumps out its full torque potential (280 ft-lb) from just 1800 rpm, and then continues to pull across the full range of engine speeds. Twin turbochargers and variable inlet and exhaust valve timing promote superb performance and ensure that the engine meets the strict ULEV emission requirements. The four-speed Geartronic automatic transmission gives you

two gearboxes in one: first, an adaptive four-speed automatic transmission for relaxed driving, and secondly a manual gearbox for when you want to drive more actively. In Manual mode, you shift up by pushing the gear lever forwards, and down by pulling the lever towards you. The speed-dependent power steering in the XC90 T6 AWD provides progressively less assistance as speed increases, thereby improving steering precision and enhancing road feedback.

#### **VOLVO XC90 2.5T AWD (208 BHP)**

Effortless all-road empowerment. The electronically controlled all-wheel drive-system (AWD) adds yet another dimension to the XC90 driving experience. As the situation dictates, drive is continuously distributed at lightning speed between the front and rear wheels. You can enjoy superior driving stability

and tractive capacity, no matter the road or weather. The experience is further enhanced by the sophisticated 208-bhp five-cylinder turbo engine (236 ft./lbs. torque) and a responsive five-speed Geartronic transmission that allows you to shift between relaxed adaptive Auto mode and sporty Manual mode.

#### **VOLVO XC90 2.5T (208 BHP)**

Top-class agility and real-life capacity. The five-cylinder 2.5-liter turbocharged engine provides a beautifully balanced and spirited driving experience. You have access to the engine's full torque (236 ft./lbs.) from as low as 1500 rpm – so you can start off quickly and will seldom need to shift down, for example when passing slower moving vehicles. The very latest advances in engine technology with variable valve timing for both inlet and exhaust valves ensure excellent performance and

cleaner exhaust emissions under all driving conditions. With highly efficient combustion and emission control, this engine meets the strict ULEV2 emission requirements. The engine is mated to a five-speed Geartronic automatic transmission that adapts gearshifts to your driving style and allows manual operation when you're in the mood for more active driving. The front wheel drive provides high driving stability in all speeds.

# STANDARD FEATURES

SAFETY	XC90 2.5T	XC90 2.5T AWD	XC90 T6 AWD
Boron Steel Reinforced Passenger Compartment	●	●	●
Cargo Cover	●	●	●
Collapsible Steering Column	●	●	●
Daytime Running Lights	●	●	●
Driver and Front Passenger Supplemental Restraint System – Dual-Threshold Air Bags	●	●	●
Dynamic Stability and Traction Control (DSTC)	●	●	●
Front Cross-Member for SUV-to-Car Impact Compatibility	●	●	●
Homelink Remote Garage Door Opener (included in Premium Package for 2.5T)	P	P	●
Inflatable Side Curtain (IC) (coverage for third-row occupants when ordered with seven seats)	●	●	●
ISOFIX Baby/Child Seat Attachment (second row)	●	●	●
Pedestrian Protection	●	●	●
Rear-Door Child Safety Locks	●	●	●
Roll-Over Protection System (ROPS)			
Roll Stability Control (RSC)	●	●	●
Safe Approach and Home Safe Lighting	●	●	●
Seat Belts: 3-Point Inertia-Reel with Automatic Pretensioners for All Seating Positions; Front Belts include Force Limiters	●	●	●
Side Impact Air Bags for Driver and Front Passenger (SIPS Bags II™)	●	●	●
Side Impact Protection System (SIPS)	●	●	●
Two-Step Remote Entry, Central Power Door Locks	●	●	●
Whiplash Protection Seating System (WHIPS)	●	●	●
Volvo Guard Alarm with Siren, Battery Back-Up and Immobilizer	●	●	●
<b>INTERIOR:</b>			
AM/FM with Single In-Dash CD, 160W, 8 Speakers	●	●	–
AM/FM with In-Dash 6-CD Changer, 160W, 8 Speakers	–	–	●
Audio and Cruise Controls in Steering Wheel	●	●	●
Auto-Dim Rearview Mirror (included in Premium Package for 2.5T)	P	P	●
B-Pillar Ventilation for Second-Row Passengers	●	●	●
Cabin Pollen Filter	●	●	●
Cruise Control	●	●	●
Dual-Zone Electronic Climate Control (ECC)	●	●	●
Flat-Folding 40/20/40 Split Second-Row Seat	●	●	●
Flat-Folding Front Passenger Seat	●	●	●
Grocery Bag Holder in Cargo Area (not available with the Versatility Package)	●	●	●
Illuminated Vanity Mirror in Driver and Front Passenger Sun Visors	●	●	●
Leather-trimmed Steering Wheel	●	●	●
Memory Function for Exterior Rearview Mirrors (included in Premium Package for 2.5T)	●	●	●
Outside Temperature Gauge	●	●	●
Power Adjustable Driver Seat, 8-Way with 3-Position Memory and Lumbar Support	●	●	●
Power Adjustable Passenger Seat, 8-Way with Lumbar Support (included in Premium Package for 2.5T)	P	P	●
Power Windows with Driver and Front Passenger Auto Up/Down with Anti-Trap Feature	●	●	●
Reading Lamps (front, rear and third row if applicable)	●	●	●
Textile Floor Mats	●	●	●
Tinted Rear Windows (not available with the Security Package)	●	●	●
Trip Computer	●	●	●
12 Beverage Holders	●	●	●
12V Power Outlets (3)	●	●	●
Wood-Effect Inlays	●	●	●
<b>EXTERIOR:</b>			
7" x 17" Alloy Wheels	●	●	●
Front Fog Lights	●	●	●
Front Stainless Steel Skid Plate	●	●	●
Power Glass Moonroof with Slide/Tilt Positions, Sliding Sunshade and Auto-Open (included in Premium Package for 2.5T)	P	P	●
Power Adjustable Heated Exterior Rearview Mirrors	●	●	●
Premair® Treated Radiator	●	●	●
Rear Wiper/Washer	●	●	●
Roof Rails	●	●	●
Towbar Preparation	●	●	●

● = Standard P = Package





## PREMIUM PACKAGE

A Volvo offers you long, relaxed drives and a more spirited everyday life. The Premium Package will provide you with some necessities for that extra ambience and convenience.

### 2.5T

- Leather seating surfaces
- Power glass moonroof
- In-dash, 6-CD changer
- Auto dimming rearview mirror
- Homelink®
- Memory rearview mirrors
- 8-way power passenger's seat

### T6:

- 18" ATLANTIS alloy wheels
- Power retractable rearview mirrors
- Premium sound system, 305W with Dolby Pro Logic II® surround sound, 12 premium speakers



## VERSATILITY PACKAGE\*

A Volvo is always fit to face the challenges of real life. To make your car even more flexible and comfortable for the whole family, you can complete the experience with the Versatility Package including third row convenience.

- 3rd row seat w/leather seat surfaces
- 3rd row air conditioner w/separate controls
- Nivomat self-leveling rear suspension
- Rear headphone outlets
- Sliding center booster cushion, 2nd row\*\*

\* Requires Premium Package on 2.5T

\*\* Integrated center booster cushion slides forward only when order in Versatility Package.



## CLIMATE PACKAGE

In a Volvo you're always prepared to deal with the ever-changing forces of nature. And to increase comfort when driving in cold, rain or snow – simply add the Climate Package.

- Interior air quality sensor (IAQS)
- Rain sensor
- Heated front seats
- Headlamp washers



## SECURITY PACKAGE

Your Volvo offers comprehensive security as standard. If you want even more protection, you can add some well-tested extra equipment that has been developed especially for your XC90.

- Laminated side windows\*
- Level sensor
- Mass movement sensor
- Infrared windshield and front side windows

\*Standard window tint deleted.

# FEATURES AT A GLANCE

Roof structure reinforced with boron steel

Large windows for greater visibility

Head protection for all three rows of seats

70/30 split tailgate, easy to open and close

Independent Multilink rear suspension

18" alloy wheels (optional)

Side Decor, Aluminum Step Rails, Cross Bars (Retailer Installed Accessory)

Ground Clearance, 8.9"



Tinted windows

Power retractable  
mirrors (optional)

Lightweight, high-torque  
turbocharged engines

Smooth lines, flush headlights,  
and low engine position reduce  
danger to pedestrians

Lower cross-member helps prevent  
"ride over" in the event of collision  
with smaller vehicle

Electronically Controlled  
AWD (std T6)

Fog Lights

Unibody construction





## AUDIO AND ENTERTAINMENT

THOUGH HIGHLY ENJOYABLE IN AND OF ITSELF, THE VOLVO XC90 CAN BE TRANSFORMED INTO A VIRTUAL MOBILE ENTERTAINMENT CENTER. A POWERFUL, 160 W AUDIO SYSTEM WITH RADIO, CD PLAYER, AND EIGHT HIGH-DEFINITION SPEAKERS IS STANDARD. IT CAN BE ENHANCED WITH A VARIETY OF OPTIONS, INCLUDING A BUILT-IN SIX-CD CHANGER (STANDARD ON T6). OR, GO ALL THE WAY TO CONCERT-HALL REALISM BY CHOOSING THE PREMIUM AUDIO SYSTEM. FOR EVEN MORE FUN, A REAR-SEAT ENTERTAINMENT SYSTEM IS AVAILABLE AS A RETAILER-INSTALLED OPTION.

### HIGH PERFORMANCE AUDIO SYSTEM

Standard audio system provides outstanding sound reproduction.

- AM/FM with in-dash CD player
- Eight high-performance speakers
- High-performance amplifier, 160 total watts

### PREMIUM SOUND AUDIO SYSTEM

In this world-class audio system, Dolby Surround Sound Pro Logic II® makes its automotive debut. Together with Premium Sound speakers, it gives audiophiles a moving experience — like having your favorite orchestra along for the ride.

- AM/FM with in-dash six-CD changer
- 12 Premium speakers
- Dolby Pro-Logic II® Surround Sound
- Alpine® amplifier, 305 total watts

The Dolby and Pro Logic trademarks are the property of Dolby Laboratories Licensing Corporation.

**REAR-SEAT ENTERTAINMENT SYSTEM\***

Comprehensive entertainment system for rear-seat passengers. With DVD player and seven-inch (17.8 cm) wide screen that folds down from the inner roof. Wireless IR headphones allow the passengers to watch a DVD movie, listen to a CD, or play computer games without disturbing the vehicle's other occupants. The system is easy to operate via menus and has a separate remote control.

\*Available in late 2003 as a retailer-installed option.



**REAR HEADPHONE OUTLETS (VERSATILITY PACKAGE)**

Allows four rear-seat passengers to listen to the radio or their favorite disc at the same time, without disturbing the vehicle's other occupants. With separate controls for headphone volume and audio source. Also with controls for changing tracks or switching radio stations.



**REMOTE CONTROL FROM THE STEERING WHEEL**

Makes it possible to adjust the volume, switch radio stations, and play the previous or next track without taking your hands off the wheel. With illuminated buttons.



**SUB-WOOFER (OPTIONAL)**

Provides soul-stirring bass at all volumes. With built-in 140 W amplifier. Not available with Versatility Package.

**CARGO NET**

Protects passengers from unsecured loads when braking sharply. Fitted behind the second row of seats. Color-matched to the rest of the interior trim.



**BI-XENON HEADLAMPS**

Provide you with even better low and high beams in all conditions. They illuminate the road ahead evenly and effectively. Low beam is adjusted automatically to provide the best possible light pattern when the car is heavily loaded.



**REAR PARKING ASSISTANCE**

Warns of objects behind the vehicle while reversing with a buzz tone that pulses, then increases to a constant tone when object is within 9 inches. The sound is only audible inside the cabin.



**FACTORY-INSTALLED OPTIONS**

THE SENSE OF QUALITY AND CARE – AND KNOWING THAT YOU GET THE VOLVO THAT SUITS YOUR LIFESTYLE. YOU'RE WELCOME TO PERSONALIZE YOUR CAR WITH THE OPTIONS THAT BEST STAND UP TO YOUR DEMANDS AND DESIRES.



**POWER GLASS MOONROOF\***

Makes the interior feel extra light and airy. Touch a button – and you open or close the moonroof. And if the sun is too strong, you can always close the built-in sunshade.

\*Included in the Premium Package. (Std.T6)



**VOLVO NAVIGATION SYSTEM**

Guides you anywhere with precise audio and visual directions. Using the global positioning satellite system, a liquid crystal 6.5-inch display shows your location on a map and plots the best route. Controls are conveniently located on the steering wheel. When not in use, the screen retracts into the dashboard. All map-based information is stored on one single DVD disc.



**THIRD ROW AC (VERSATILITY PACKAGE)**

To really enhance comfort, you can supplement the ECC automatic climate unit with a separate manual air conditioning system for the third-row passengers. They can operate the fan speed themselves, adjusting output via the separate vents. Not in combination with a sub-woofer.



## ACCESSORIES

VOLVO'S ACCESSORIES HELP YOU MAKE YOUR XC90 EVEN BETTER SUITED TO YOUR PERSONAL NEEDS. THEY ARE THE ONLY ONES THAT HAVE BEEN TESTED TO MEET VOLVO'S EXACTING SAFETY, QUALITY AND ENVIRONMENTAL REQUIREMENTS. YOU CAN ALSO REST ASSURED THEY'RE A PERFECT MATCH TO THE TECHNOLOGY AND DESIGN OF YOUR VOLVO.

### FOR DRIVING FREEDOM

- Hands free phone system
- Rear Parking Assistance
- Rear seat entertainment system (Available late 2003)
- Speaker upgrades
- PC Table
- Reading lamp
- Business bag organizer
- Sun glass holder
- Electric cooler box

### FOR YOUR LEISURE

- Roof mounted load carrier system
- Bicycle carrier (roof mounted)
- Bicycle lift carrier (roof mounted)
- Ski/Snowboard carrier (roof mounted)
- Interior bicycle holder
- Canoe/Kayak carrier
- Windsurfing board carrier
- Cargo box
- Roof top load carrier/load straps
- Square profile trailer hitch
- Bicycle holder (hitch mounted)
- Ski holder (hitch mounted)
- Load basket (hitch mounted)
- Trailer mirrors
- Automatic leveling system
- Picnic table and seat cushions
- Snow chains
- Electric engine heater
- First aid kit
- Jumper cables
- Warning triangle
- Engine protection plate

### FOR YOUR INTERIOR COMFORT

- Steel cargo organizer
- Luggage compartment mats (rubber)
- Luggage compartment mats (textile)
- Floor mats (rubber)
- Load liner
- Load securing net trunk floor
- Net pocket side panel
- Net pocket glove box
- Rear bumper cover
- Tunnel mats
- Leather care kit
- Car cover
- Pull out storage bin

### FOR PRECIOUS CARGO

- Booster cushion and backrest
- Child activity bag
- Child mirror
- Padded upholstery/headrest
- Rear center armrest table
- Padded neck cushion

### EXTERIOR STYLING

- Running Boards
- Mud flaps front and rear
- Aluminum cross bars
- Skid Plate, rear bumper
- Aluminum wheels
- Roof ribs
- Side Decor

# INTERIOR SELECTIONS

CHOOSE FROM A NUMBER OF SPECIALLY DESIGNED OPTIONS TO DESIGN THE INTERIOR THAT BEST SUITS YOU. THEN ENJOY YOUR CREATION EVERY TIME YOU STEP INSIDE.



**TAUPE INTERIOR**

Leather seating surfaces in Taupe with leather-trimmed steering wheel.



Leather-trimmed steering wheel    Wood-trimmed steering wheel (Optional)



Siljan textile/vinyl, taupe (C080)



Leather, light taupe (C981)



Aluminium inlays    Wood inlays (Available late 2003)





**GRAPHITE INTERIOR**

Leather seating surfaces in graphite with leather-trimmed steering wheel.



Leather-trimmed steering wheel

Wood-trimmed steering wheel  
(Optional)



Siljan textile/vinyl, graphite (C070)



Leather, graphite (C970)



Aluminium inlays

Wood inlays  
(Available late 2003)



## EXTERIOR SELECTIONS

YOU CAN CUSTOMIZE THE LOOK TO SUIT YOUR TASTE AND TEMPERAMENT. CHOOSE FROM A VARIETY OF COLORS AND EXTERIOR DETAILS. SELECT FROM THREE DIFFERENT WHEEL DESIGNS. EVEN HAVE RUNNING BOARDS RENDERED IN LUSTROUS ALUMINUM. DIAL UP THE ELEGANCE OR THE SPORTINESS UNTIL YOU HAVE JUST THE XC90 THAT HARMONIZES WITH YOU.

### EXTERIOR STYLING

This comprehensive styling package enhances the elegant yet rugged character of the Volvo XC90. With aluminum running boards, rear skid plate, roof protector ribs, front mud flaps, and silver-finish load carriers.

### EXTERIOR STYLING

- Cross bars silver aluminum
- Running boards silver appearance
- Rear skid plate silver appearance
- Side Décor
- Mud flaps
- Roof ribs
- 18" ATLANTIS alloy wheels

### SIDE DÉCOR

This elegant design kit is fitted along the front wheel arch, the lower part of the front and rear doors, and the rear wheel arch. It protects the sides of the vehicle and is color-coordinated to match the rest of the body.

### ALUMINUM STEP UP BARS

Specially designed to give the XC90 an even more powerful stance, the aluminum running boards match the front and rear skid plates. They're functional, too, protecting the door sills and making it easier to get into and out of the vehicle. They also provide a convenient place to stand when loading the roof carrier.



7x18" ATLANTIS alloy wheels  
235/60/18 tires (opt. T6, 2.5T)

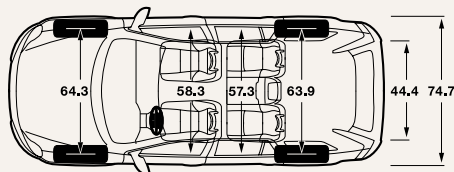
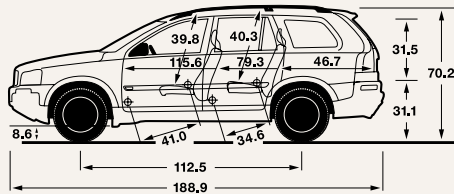


7x17" NEPTUNE alloy wheels  
235/65/17 (std. T6, 2.5T, 2.5T AWD)

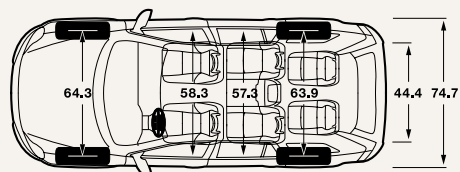
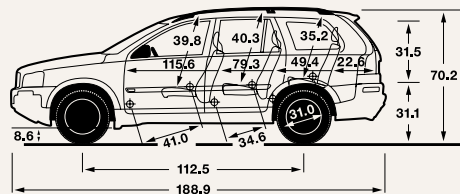
# TECHNICAL SPECIFICATIONS

ENGINE:	XC90 2.5T	XC90 2.5T AWD	XC90 T6 AWD
Horsepower (SAE net)	208 @ 5,000 rpm	208 @ 5,000 rpm	268 @ 5,200 rpm
Torque (ft./lbs. SAE net)	236 @ 1,500 -4,500 rpm	236 @ 1,500 -4,500 rpm	280 @ 1,800 -5,000 rpm
<b>TRANSMISSION:</b>			
5-Speed Driver-Adaptive Automatic with "Geartronic"	●	●	N/A
4-Speed Driver-Adaptive Automatic with "Geartronic"	N/A	N/A	●
Electronically Controlled All Wheel Drive	N/A	●	●
Front Wheel Drive	●	N/A	N/A
<b>BRAKES:</b>			
4-Channel Anti-Lock Braking System (ABS) with Electronic Brake Distribution (EBD) and Electronic Brake Assistance (EBA)	●	●	●
<b>SUSPENSION:</b>			
Front Suspension: MacPherson Strut, Coil Springs, Hydraulic Shock Absorbers, Stabilizer Bar	●	●	●
Rear Suspension: Multilink Independent Suspension with Coil Springs, Hydraulic Shock Absorbers, Stabilizer Bar	●	●	●
<b>STEERING:</b>			
Power-Assisted Rack-and-Pinion Steering	●	●	●
Speed-Sensitive Power Steering	N/A	N/A	●
<b>EXTERIOR DIMENSIONS &amp; WEIGHTS:</b>			
Curb Weight	4,361 lbs.	4,486 lbs.	4,638 lbs.
Fuel Tank Capacity	19 U.S. Gallons	19 U.S. Gallons	19 U.S. Gallons
Ground Clearance – with 17" wheel	8.9 in.	8.9 in.	8.9 in.
Ground Clearance – with 18" wheel	8.9 in.	8.9 in.	8.9 in.
Height with Roof Rails	70.2 in.	70.2 in.	70.2 in.
Length	188.9 in.	188.9 in.	188.9 in.
Top Speed	128 mph	128 mph	128 mph
Towing Capacity	4,000 lbs.	5,000 lbs.	5,000 lbs.
Track, Front/Rear	TBD	TBD	TBD
Turning Circle, Curb to Curb	39 ft.	39 ft.	39 ft.
Wheelbase	112.5 in.	112.5 in.	112.5 in.
Width	74.7 in.	74.7 in.	74.7 in.
<b>INTERIOR DIMENSIONS:</b>			
Cargo Capacity – 5-Passenger (with second-row passenger seats folded)	84.9 cu. ft.	84.9 cu. ft.	84.9 cu. ft.
Cargo Capacity – 7-Passenger (with second- and third-row passenger seats folded)	85.1 cu.ft.	85.1 cu.ft.	85.1 cu.ft.
Maximum Cargo Capacity – 5-Passenger (with all passenger seats folded)	92.0 cu. ft.	92.0 cu. ft.	92.0 cu. ft.
Maximum Cargo Capacity – 7-Passenger (with all passenger seats folded)	93.2 cu.ft.	93.2 cu.ft.	93.2 cu.ft.
Headroom with Moonroof – 5-Passenger (front seat/second row)	39.7/38.9 in.	39.7/38.9 in.	39.7/38.9 in.
Headroom with Moonroof – 7-Passenger (front seat/second row/third row)	39.7/38.4/35.5 in.	39.7/38.4/35.5 in.	39.7/38.4/35.5 in.
Headroom without Moonroof – 5-Passenger (front seat/second row)	40.1/39.5 in.	40.1/39.5 in.	40.1/39.5 in.
Headroom without Moonroof – 7-Passenger (front seat/second row/third row)	40.1/39.5/35.5 in.	40.1/39.5/35.5 in.	40.1/39.5/35.5 in.
Hiproom – 5-Passenger (front seat/second row)	55.4/53.6 in.	55.4/53.6 in.	55.4/53.6 in.
Hiproom – 7-Passenger (front seat/second row/third row)	55.4/54.1/N/A in.	55.4/54.1/N/A in.	55.4/54.1/N/A in.
Legroom – 5-Passenger (front row/second row)	41.0/36.4 in.	41.0/36.4 in.	41.0/36.4 in.
Legroom – 7-Passenger (front row/second row/third row)	41.0/34.6/30.1 in.	41.0/34.6/30.1 in.	41.0/34.6/30.1 in.
Shoulder Room – 5-Passenger (front row/second row)	58.3/57.8 in.	58.3/57.8 in.	58.3/57.8 in.
Shoulder Room – 7-Passenger (front row/second row/third row)	58.3/57.4/N/A in.	58.3/57.4/N/A in.	58.3/57.4/N/A in.
<b>FUEL ECONOMY (MPG):</b>			
Automatic Trans Highway/City	TBD	TBD	TBD

● = Standard



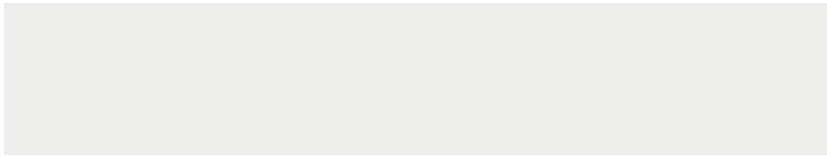
5-Seater



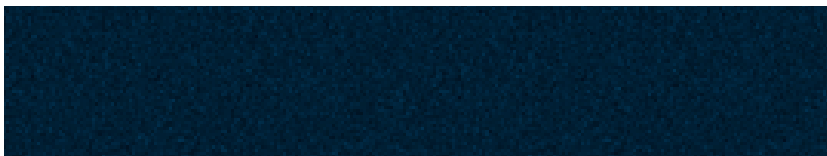
7-Seater



019 Black



614 Ice White



417 Nautic Blue metallic



426 Silver metallic



446 Ash Gold metallic



447 Cypress Green metallic



452 Black Sapphire metallic



454 Ruby Red metallic



456 Crystal Green metallic

**PLEASE NOTE:** It is not possible to reproduce exact original shades in this brochure. Ask your Volvo retailer to show you samples. As part of our commitment to the environment, the paper used in this brochure is recycled, and color choices were printed directly on the page. This eliminates the need for chemically treated color chips. A small thing perhaps, but then, every little bit helps.



## WELCOME TO OUR FAMILY

BEING A VOLVO OWNER IS ABOUT MORE THAN JUST OWNING AN AUTOMOBILE. IT'S ABOUT BEING TREATED IN A CARING, RESPONSIVE AND RESPECTFUL MANNER EVERY TIME YOU INTERACT WITH OUR COMPANY. ALL OF US ARE COMMITTED TO MAKING EVERY ASPECT OF YOUR VOLVO EXPERIENCE A REWARDING ONE. SO AFTER THE NEW CAR SMELL BEGINS TO FADE, YOU'LL STILL BE EXCITED ABOUT OWNING A VOLVO.

**CARE**  
BY VOLVO

### **VOLVO FINANCE NORTH AMERICA**

If you purchase or lease your Volvo through Volvo Finance North America, you can take advantage of services designed to make financing simple and convenient. Quick Debit, for instance, enables you to have your monthly payment automatically debited from a designated bank account. For more information, call 1-800-770-8234 or visit [www.volvofinance.com](http://www.volvofinance.com).

### **CARE BY VOLVO® ON CALL ROADSIDE ASSISTANCE**

Whenever you need us, we're just a phone call away. Our nationwide network of retailers and authorized service providers are ready to assist. Whether you require roadside assistance or maps and routing information for your next trip, refer to your Care By Volvo® On Call Card and dial 1-800-63-VOLVO – anytime, day or night. Your complimentary four-year membership activates the moment you become a Volvo owner.

### **THE VOLVO OWNERS' CIRCLE**

Driving is not the only rewarding part of owning a Volvo. As a member of the Volvo Owners' Circle, you'll have access to information designed exclusively for Volvo owners. This unique online resource includes frequently asked questions, special offers, a resale value wizard, and your own Virtual Glove Box – complete with an owner's manual and more.

**PERSONAL SHOPPER.** The Volvo Personal Shopper is dedicated to providing you with a whole new level of shopping convenience. Whether you'd like help identifying the Volvo model that best fits your lifestyle, detailed information on any Volvo model, or a comparison against the competition, Volvo is there to help. We can arrange a Guest Drive for you at your nearest Volvo Retailer. So make the most of your shopping time and call the Volvo Personal Shopper at 1-800-550-5658. (U.S. only)

### **VOLVO NEW CAR WARRANTY**

Your new car warranty provides comprehensive coverage for four years or 50,000 miles, whichever occurs first. Additional warranties cover corrosion, seat belts, the supplemental restraint system, emission systems, genuine Volvo replacement parts and genuine Volvo accessories. Should you encounter any problem with your Volvo, simply contact the nearest retailer for assistance. Where your warranty ends, Volvo Increased Protection (VIP) plans begin. To purchase the additional protection of a VIP plan, contact your local retailer.

### **CARE BY VOLVO® FACTORY SCHEDULED MAINTENANCE**

Volvo is committed to a premium ownership experience for its customers. To further enhance your ownership experience, all 2004 model year Volvos sold in the United States will include Care By Volvo® Factory Scheduled Maintenance. This program provides scheduled maintenance coverage for the first 3 years or 36,000 miles, is designed to compliment your Volvo Warranty, and will help ensure trouble free operation of your Volvo. Optional program enhancements are available that will allow you to customize coverage to meet your driving needs. See your Volvo retailer for details.

**WWW.VOLVOCARS.US**

Specifications, features, and equipment shown in this catalog are based upon the latest information available at the time of publication. Volvo Cars of North America, LLC reserves the right to make changes at any time, without notice, to colors, specifications, accessories, materials, and models. For additional information, please contact your authorized Volvo retailer.

© 2003 Volvo Cars of North America, LLC. Printed in U.S.A. on recycled paper.

**MY04A 2**

**VOLVO**  
Volvo Car Corporation