

# NISSAN'S 1986 CARS AND TRUCKS

QUALITY AT EVERY TURN



## LIVE WITHIN A BUDGET IN STYLE.

You tell yourself to be practical, but you still want the good things in life—and you don't want to wait years and years to get them. Then don't!

With nine front-wheel-drive models to choose from, the Nissan Sentra

makes it easy to find the right combination of comfort, styling and fuel economy.\* And you can get it all for a very reasonable sticker price.

Every Sentra—from our most affordable 2-Door model on up to our top-of-the-line SE Coupe—

offers plenty of room for five adults. Plus, a trunk that's extremely generous. Sentra is powered by a powerful, 1.6-liter, overhead-cam engine that you can team with either a 5-speed overdrive synchromesh transaxle or an optional 3-speed automatic with a fuel-saving, lock-up torque converter (except on

Standard and SE models). Either way, you get plenty of zoom to go with all the room.

See for yourself. Whether 2-Door or 4-Door, Hatchback, Sedan or Wagon, you'll be amazed at how much Sentra comes with and how little it goes for.

## NISSAN SENTRA HIGHLIGHTS

- Power front disc brakes
- Rack-and-pinion steering
- Electric rear-window defroster with timer
- Remote, locking fuel-filler door (Deluxe, XE and SE models)
- Halogen headlights
- Tinted glass windows (Deluxe, XE and SE

- models) • Fully independent suspension
- Reclining front seat-backs
- Flow-through ventilation... and much, much more.

\*Nissan Sentra with 5-Speed: 38 EST HWY/31 EST CITY  
Nissan Sentra with Automatic: 30 EST HWY/27 EST CITY  
1986 E.P.A. estimates. Remember, use these E.P.A. estimates for comparison. Actual mileage may vary depending upon driving conditions.



NISSAN SENTRA XE 4-DOOR SEDAN



NISSAN SENTRA STANDARD 2-DOOR SEDAN



NISSAN SENTRA XE 2-DOOR SEDAN



NISSAN SENTRA SE HATCHBACK COUPE



NISSAN SENTRA XE WAGON

Some items shown are optional. See the 1986 Nissan Sentra brochure for more complete information.

## NISSAN PULSAR NX

### THERE'S EXCITEMENT FOR EVERYONE.

Fresh innovative styling and exhilarating performance is what Nissan Pulsar NX is all about.

For instance, a unique aerodynamic design gives the Pulsar NX a low drag coefficient of just 0.37. This translates into better

performance and outstanding mileage,\* and both have been improved even more by the 1.6-liter, overhead-cam engine.

You can team this power with the standard 5-speed overdrive manual all-synchromesh transmission or the optional 3-speed automatic with

lock-up torque converter. And to deliver the precise, road-holding performance you need to breeze around sharp curves, there are standard features such as power rack-and-pinion steering, steel-belted radial tires, power front disc brakes and 4-wheel independent suspension.

For true value, the name is Nissan.



NISSAN PULSAR NX

### NISSAN PULSAR NX HIGHLIGHTS

- 1.6-liter, overhead-cam engine
- Reclining bucket seats
- Pop-up sun roof
- AM/FM electronically tuned stereo with four speakers... and much more.

\* Nissan Pulsar NX with 5-Speed: 38 EST HWY/31 EST CITY  
Nissan Pulsar NX with Automatic: 30 EST HWY/27 EST CITY  
1986 E.P.A. estimates. Remember use these E.P.A. estimates for comparison. Actual mileage may vary depending upon driving conditions. Some items shown are optional. See the 1986 Nissan Pulsar NX brochure for more complete information.



COMFORTABLE INTERIOR OF PULSAR NX

### YOU'RE ON YOUR WAY UP.

Perhaps you're just starting out, and all your goals are in front of you. Well, with the Nissan Stanza GL Sedan, and the Stanza 2-Wheel and 4-Wheel-Drive Wagons, you can reach some very important goals right now.

Your Nissan Stanza not only ensures roominess and economy,\* but also high quality, competitive performance and beautiful styling.

With the all-new Nissan Stanza Wagon, you and your family will enjoy extraordinary spaciousness. With its dual sliding doors and pillarless construction, the Stanza

Wagon features a huge, unobstructed side-loading area. Getting in and out is incredibly easy—even in the tightest spots. Plus, with our Stanza Wagon 4-Wheel-Drive model you can transport your family with extra safety in rain and snow.

So stretch out in style with Stanza. It won't stretch your budget.



NISSAN STANZA GL SEDAN



NISSAN STANZA 2-WHEEL-DRIVE WAGON



NISSAN STANZA 4-WHEEL-DRIVE WAGON

### NISSAN STANZA HIGHLIGHTS

- 2.0-liter, 4-cyl. OHC fuel-injected NAPS-X engine
- 4-wheel independent suspension
- Power ventilated front disc brakes
- Power rack-and-pinion steering
- Optional power sun roof... and much, much more.

\* Nissan Stanza GL with 5-Speed: 33 EST HWY/26 EST CITY  
Nissan Stanza 2WD Wagon w/5-Spd: 28 EST HWY/23 EST CITY  
Nissan Stanza 4WD Wagon w/5-Spd: 24 EST HWY/20 EST CITY  
1986 E.P.A. estimates. Remember use these E.P.A. estimates for comparison. Actual mileage may vary depending upon driving conditions. Some items shown are optional. See the 1986 Nissan Stanza brochure for more complete information.

## IT'S AS GOOD AS IT LOOKS.

Nissan has a lot of ways for you to look good—such as our 200 SX Notchback, Hatchback and Turbo models.

For instance, the Nissan 200 SX Turbo will appeal to your spirit of

adventure and to your sense of style in a way few other cars can. Powered by a turbocharged, electronically fuel-injected, 1.8-liter engine, the Nissan 200 SX Turbo combines lightning quick response with precise handling.

Once you set its wheels in motion, just watch the heads turn as its aerodynamic body moves through the air with the greatest of ease.

The Nissan 200 SX also makes it easy to live within a budget with the Hatchback and Notchback in E or XE trim. They all

deliver a seemingly endless list of standard luxuries—not to mention an impressive number of available options—from the power of a fuel-injected, 2.0-liter, overhead-cam engine to the sporty, low-profile, steel-belted radial tires.

If you're one of those people who appreciates top performance and admires sleek, good looks, there's nothing quite like the Nissan 200 SX.

### NISSAN 200 SX HIGHLIGHTS

- Aerodynamic styling
- 4-wheel independent suspension
- Power

rack-and-pinion steering

- Cruise control (XE and Turbo models)
- Tilt steering column
- AM/FM electronically tuned stereo with digital readout
- Pop-up halogen headlights... and much, much more.



NISSAN 200 SX TURBO INSTRUMENT PANEL



NISSAN 200 SX TURBO INTERIOR



NISSAN 200 SX TURBO



NISSAN 200 SX XE HATCHBACK



NISSAN 200 SX XE NOTCHBACK

## LUXURY WITH PERFORMANCE.

It used to be that you had to decide between luxury and performance when buying a car. But now all you have to decide on is Maxima. With the Nissan Maxima you can have it all in our luxurious GL Sedan, our sporty

SE Sedan and our popular Maxima Wagon.

Consider for a moment the performance of the Maxima GL Sedan. Its fuel-injected, overhead-cam V6 engine is the same powerplant that propels the awesome Nissan 300 ZX. And, it's teamed

with a 4-speed automatic with overdrive, 4-wheel independent suspension, power rack-and-pinion steering and more.

Now, consider the luxury. Its Digital Touch Entry System on the GL models admits you to a spacious passenger compartment that's complemented by an extremely

generous cargo-carrying area. And, there are luxury items almost everywhere you look—from the 6-speaker AM/FM electronically tuned stereo to the theft-deterrent system for added security.

But then, that's what makes a Nissan Maxima

so special. So if you're looking for luxury and performance, your decision is obvious. Maxima.

## NISSAN MAXIMA HIGHLIGHTS

- Standard AM/FM electronically tuned digital 6-speaker stereo with graphic equalizer and Dolby® cassette deck

- 4-wheel independent suspension
- Power rack-and-pinion steering
- Fully integrated air conditioning
- Power windows and door locks
- Power sun roof standard on GL Wagon and SE, optional on GL Sedan . . . and much, much more.



NISSAN MAXIMA GL SEDAN



Nissan Maxima combines a fuel-injected, 3.0-liter V6 engine with features like front-wheel drive and power rack-and-pinion steering to give you a smooth ride and better handling.



NISSAN MAXIMA GL WAGON



NISSAN MAXIMA SE SEDAN

Some items shown are optional. See the 1986 Nissan Maxima brochure for more complete information.

## THE LATEST CHAPTER IN A GLORIOUS HISTORY.

With its new, streamlined body, aerodynamic undercarriage and integrated fender flares, the 1986 Nissan 300 ZX is more agile than ever. There are also new 16" wheels and larger tires on

the Turbo model to give you a wider track and a better grip on the road.

There are three ZX models to choose from: Turbo, 2-Seater and 2+2. All have the stuff that has made the Z-car one of America's most desirable sports cars for over 15 years. Power. Performance. Precision handling. Plus,

the distinctive styling that turns heads everywhere it goes.

The Nissan 300 ZX Turbo, for example, has a fuel-injected, turbo-charged, 3.0-liter V6. A racing version of the same engine propels Nissan's all-new GTP ZX race car to blistering speeds of approximately 215 m.p.h. on the track.

Other features that make the 300 ZX Turbo a performance star include 3-way adjustable suspension, 5-speed overdrive manual transmission, power rack-and-pinion steering and 4-wheel independent suspension to smooth out the sharp curves.

In motion or at rest, the 300 ZX Turbo is a joy

to behold. And as the latest successor in a legendary line, it continues the tradition of the Z-car in a manner that not only lives up to, but surpasses, its predecessors.

### NISSAN 300 ZX HIGHLIGHTS

- 3.0-liter, overhead-cam V6 engine
- Fully integrated air conditioning

- 4-wheel independent suspension
- Optional Leather Package
- Optional Electronic Equipment Package with 80-watt AM/FM stereo, graphic equalizer and microprocessor-controlled automatic air conditioning
- 3-way driver-adjustable shock absorbers (Turbo) ... and much, much more.



NISSAN 300 ZX ANALOG INSTRUMENT PANEL



NISSAN 300 ZX OPTIONAL LEATHER INTERIOR



NISSAN 300 ZX TURBO



NISSAN 300 ZX 2-SEATER



NISSAN 300 ZX 2+2

## THEY'RE EXTRA HARD OUTSIDE, EXTRA COMFORTABLE INSIDE.

These tough, durable, ready-to-take-on-anything Nissan Hardbodies now offer you the advantages of fuel-injected performance with a V6 on SE models or a 2.4-liter twin-spark hemi head engine

on other 4x4 models. Teamed with a 5-speed overdrive manual transmission, they help deliver real economy together with the kind of power you need. You'll find a wider track and bigger tires for improved traction and stability. Plus the largest cargo volume of any leading compact truck on the market

today. Combine all that with improved ground clearance and you can see why it's the perfect companion for all those off-road excursions.

Inside, the totally redesigned cab offers improved visibility together with more room to sit down, lean back and enjoy all the standard features. An easy-to-read,

easy-to-use instrument panel. Tinted glass. Comfortable upholstered seats and cloth headliner. Plus, this year, Nissan has moved the transfer shift lever next to the gear shift for added driver convenience.

Nissan's 4x4 Hardbodies. Extra hard outside. Extra comfortable inside. Just the way you

want your next truck to be.

### NISSAN 4x4 HIGHLIGHTS

- Totally new body design with improved aerodynamics
- Removable tailgate with quick release feature
- Hideaway jump seats (SE and XE King Cab®)
- Sliding rear window (SE)
- Optional Power Package (available with

- Sport Package on SE) with power windows, power door locks, cruise control, variable intermittent wipers, dual power side mirrors and 4-speaker stereo radio with cassette deck
- Optional Sport Package (available with Power Package on SE) with alloy wheels, pop-up sunroof, 31x10.50R15 tires and fender flares.



NISSAN XE LONG BED 4x4



NISSAN SE KING CAB 4x4



NISSAN SE REGULAR BED 4x4



NISSAN E REGULAR BED 4x4

# NISSAN 4x2 TRUCKS

## YOU GET MORE OUT OF THEM BECAUSE NISSAN PUT MORE IN.

Front to back, inside and out, the Nissan 4x2 Hardbodies offer you more than any other Nissan Truck in history.

Sleeker, more aerodynamic than any of their predecessors, they feature

an increased use of galvanized steel for greater strength, plus improved corrosion resistance. Underneath the hood of these revolutionary new Nissans, you'll find a fuel-injected engine—a 3.0-liter V6 or a 2.4-liter twin-spark hemi head. Teamed with 5-speed overdrive manual transmission (optional automatic available except

on Standard), they give you the power you need when hauling extra payload, extra passengers or both. In back, double steel walls frame the largest cargo volume area of any leading compact truck. And the standard removable tailgate now comes with a quick release feature.

Inside, you'll find the roomiest Nissan cab ever,

with three-across seating in the conventional 4x2 Hardbodies and convenient hideaway jump seats in the SE and XE King Cab® models.

And if your job calls for something extra, Nissan also offers a new Heavy Duty Long Bed as well as a dual rear wheel Cab & Chassis. Both are equipped with a standard V6 to

handle a hard day's work. Every day.

Nissan 4x2 Trucks. You'll get more out of these Hardbodies because Nissan put more in.

### NISSAN 4x2 TRUCK HIGHLIGHTS

- Totally new body design for greater strength and improved corrosion resistance
- Fuel-injected

- engine
- 4-passenger seating in King Cab® with hideaway jump seats (SE and XE)
- New wrapover quarter windows
- Sliding rear window (SE)
- Pop-up tie-down hooks (SE)
- Removable tailgate with quick release
- Optional pop-up sunroof (SE with Sport Package and Power Package)



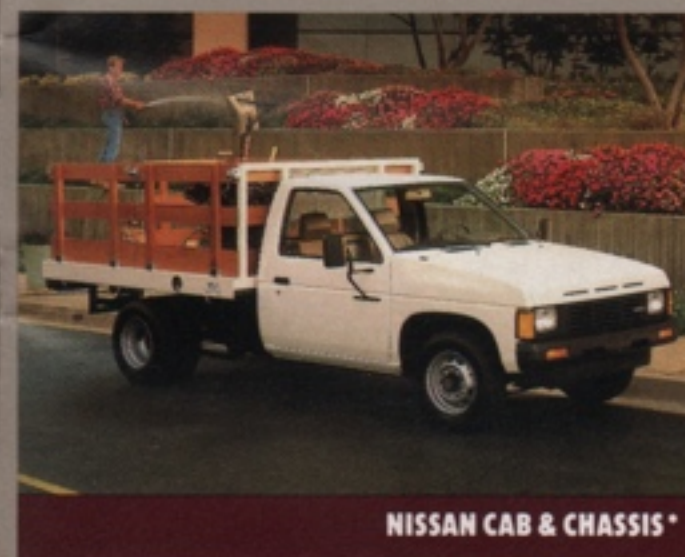
NISSAN SE KING CAB



(TOP) NISSAN XE KING CAB, (BOTTOM) NISSAN XE LONG BED



(TOP) NISSAN E REGULAR BED, (BOTTOM) NISSAN STANDARD REGULAR BED



NISSAN CAB & CHASSIS\*

Some items shown are optional. See the Nissan Truck brochure for more complete information.



Nissan Motor Corporation in U.S.A. and your Nissan dealer urge you to be a smart driver and use your safety belt whenever you drive. It does save lives. Remember, if you don't belt yourself, you're kidding yourself.

All illustrations and specifications in the catalog are based on the latest product information available at time of publication. Nissan Motor Corporation in U.S.A. reserves the right to make changes at any time, without notice, in prices, colors, materials, equipment, specifications and models, and to discontinue models or equipment. For information on additional options and accessories, contact your Nissan dealer. All specifications, options and accessories shown in this catalog apply to the 49 states. Specifications, options and accessories may differ in Hawaii, U.S. territories and other countries.

NCTS-6102-1-86 650M-AL-2

© Copyright 1986, Nissan Motor Corporation in U.S.A.

\* Cab & Chassis bodies and campers are not manufactured or sold by Nissan but are available from other sources.



