

# THE M5

COMPETITION



Best viewed in  
landscape mode



## THE NEW BMW M5 COMPETITION.

RETURN BY CLICKING [🏠](#)  
SELECT A TOPIC BELOW TO EXPLORE:



### FEATURED MODEL. BMW M5 COMPETITION:

M TwinPower Turbo eight-cylinder petrol engine, 625hp (460kW), 20" M Double-spoke style 706 M wheels in Jet Black with mixed tyres, BMW Individual Imola Red metallic paint, M multi-functional seats in Full Merino leather in Black and Aluminium Carbon structure dark interior trim with dark Chrome highlight



UNCONTESTED.  
SHARPENED.

UNRIVALLED PERFORMANCE.



PERFECTLY MASTERED.

M5 COMPETITION.



The new BMW M5 Competition is shown above in BMW Individual Imola Red metallic paint.

■ Standard equipment □ Optional equipment

# M5 COMPETITION.



## EXTERIOR

- M rear spoiler
- M Compound brakes, High-gloss Red
- Carbon fibre roof
- 20" M light alloy Y-spoke style 789 M wheels in Bicolour with mixed tyres
- BMW Individual Lights Shadowline
- BMW Individual High-gloss Shadowline with extended contents consisting of:
  - M5 Competition designation to boot lid in black
  - Mirror caps in High-gloss Black
  - Rear apron insert in High-gloss Black
  - Side gills with M5 designation in High-gloss Black
  - Kidney grille in High-gloss Black with M5 designation
- M Sport exhaust system
- Exhaust tailpipes, Black
- Sun protection glass
- Brake lights with LED technology, Dynamic

## INTERIOR

- M multi-functional seats, front
- Full Merino leather upholstery
- Galvanic embellisher for controls
- Red Start/Stop button
- Headlining, BMW Individual Anthracite Alcantara
- Interior trim, Aluminium Carbon structure with Pearl Chrome highlight
- M seat belts
- M leather steering wheel
- Seat adjustment – front, electric with memory
- Lumbar support, front
- Seat heating, front
- Ambient lighting
- Door sill finishers illuminated with M5 Competition designation
- Floor mats, front and rear in Black velour with M piping

## SAFETY & TECHNOLOGY

- M xDrive – rear-biased M-specific xDrive setup
- Adaptive suspension with Dynamic Damper Control
- Eight-speed M Steptronic sport automatic transmission with DRIVELOGIC
- M Servotronic steering
- M Head-up Display
- Engine cover with 'M' designation
- Active Guard
- Adaptive LED headlights
- High-beam Assistant
- Comfort access
- Driving Assistant
- Parking Assistant Plus
- Drive Recorder
- BMW M TwinPowerTurbo eight-cylinder petrol engine
  - High-precision injection
  - VALVETRONIC with Double-VANOS
  - Twin TwinScroll turbo

## AUDIO & COMMUNICATION

- BMW Live Cockpit Professional, comprising:
  - 12.3" Control Display with Touch Functionality
  - 12.3" Digital Instrument Display
  - BMW Intelligent Personal Assistant
  - BMW Navigation system
  - BMW Operating System 7.0
  - Digital Driver Cockpit
  - Intelligent Functionalities
  - Remote Software Upgrade
- Loudspeaker system - harman/kardon
- BMW Gesture Control
- Connected Package Professional
- Enhanced Bluetooth with wireless charging
- WiFi hotspot preparation
- iDrive Touch Controller with shortcut buttons

# EXTERIOR COLOURS.



Non-metallic Alpine White



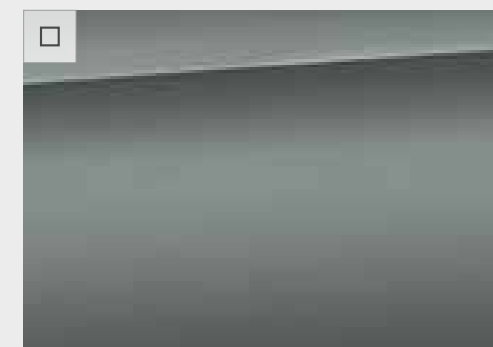
Metallic Black Sapphire



Metallic Donington Grey<sup>1</sup>



Metallic Brands Hatch Grey



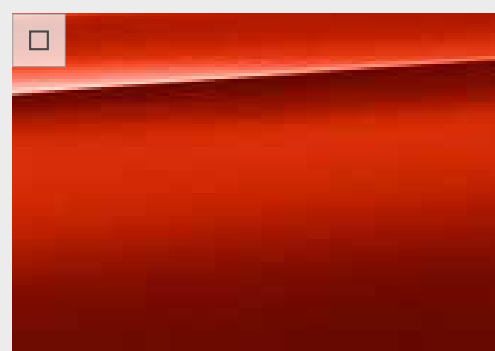
Metallic Bluestone



Metallic Marina Bay Blue



Metallic Snapper Rocks Blue



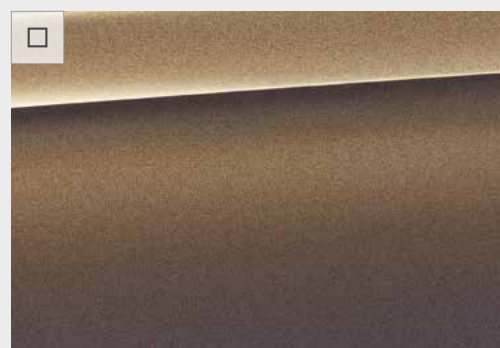
Metallic Motegi Red

<sup>1</sup> = The function of Lane Change Assistant, as part of Driving Assistant Professional, will be deactivated when ordered in combination with Donington Grey metallic or BMW Individual Special request paintwork.

## BMW INDIVIDUAL.



Metallic Tanzanite Blue



Metallic Alvite Grey



Metallic Aventurine Red

# UPHOLSTERY & INTERIOR TRIMS.

## FULL MERINO LEATHER.



Black with a Black colour world



Silverstone with a Black colour world

## BMW INDIVIDUAL FULL MERINO LEATHER.



Smoke White with a Black colour world



Aragon Brown with a Black colour world



Black with contrast stitching in Midrand Beige

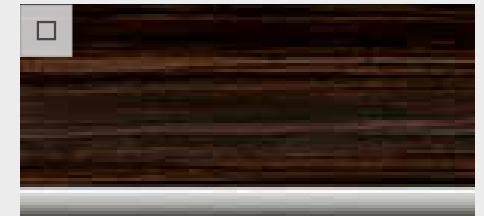


Tartufo with a Black colour world

## INTERIOR TRIMS.



Aluminium Carbon Structure with Pearl Chrome highlight



Finewood Fineline Ridge with Pearl Chrome highlight



Aluminium Carbon structure dark with dark Chrome highlight

## BMW INDIVIDUAL.



Piano Black



# PACKAGES.

Optional packages offer an attractive combination of the most popular options at a reduced (combined) cost and will enhance any journey in the new BMW M5 Competition.

## M PRO PACK.

- M Carbon ceramic brakes with Matt Gold calipers
- M Driver's Package:
  - Increase of top speed to approximately 189mph (305km/h)

Dependent on conditions and usage, features specific to the materials used can lead to operational noises particularly in wet conditions just before the vehicle comes to a halt. The impact of moisture and road salt can cause the braking action to be equivalent to a conventional brake system. This can for a short time be experienced as a reduction in braking action and can be balanced out by greater pressure on the pedal where necessary. Increase of top speed not available until the running in inspection has been completed.



## ULTIMATE PACK.

- Active seat ventilation, front
- Ambient Air package
- BMW Laserlights
- Bowers & Wilkins Diamond Surround Sound System
- Driving Assistant Professional
- Massage function, front
- M Carbon ceramic brakes
- M Carbon engine cover
- M Driver's Package
- Rear-seat Entertainment Professional
- Seat heating, front and rear
- Soft close doors
- Steering wheel heating
- TV Function Plus



## TECHNOLOGY PLUS PACK.

- Driving Assistant Professional
- Bowers & Wilkins Diamond Surround Sound System



## ENTERTAINMENT PACK.

- Rear-seat Entertainment Professional
- TV Function Plus



## COMFORT PLUS PACK.

- Active seat ventilation, front
- Ambient Air package
- Massage function, front
- Seat heating, front and rear
- Soft close doors
- Steering wheel heating



## VISIBILITY PACK.

- BMW Laserlights



# OPTIONAL EQUIPMENT HIGHLIGHTS.

## M COMPOUND BRAKES, HIGH-GLOSS BLACK.

Thanks to the use of various materials, the M Compound brakes achieve outstanding deceleration values and are extremely stable and highly durable. The brake calipers in High-gloss Black with M lettering mark the M-specific braking system.

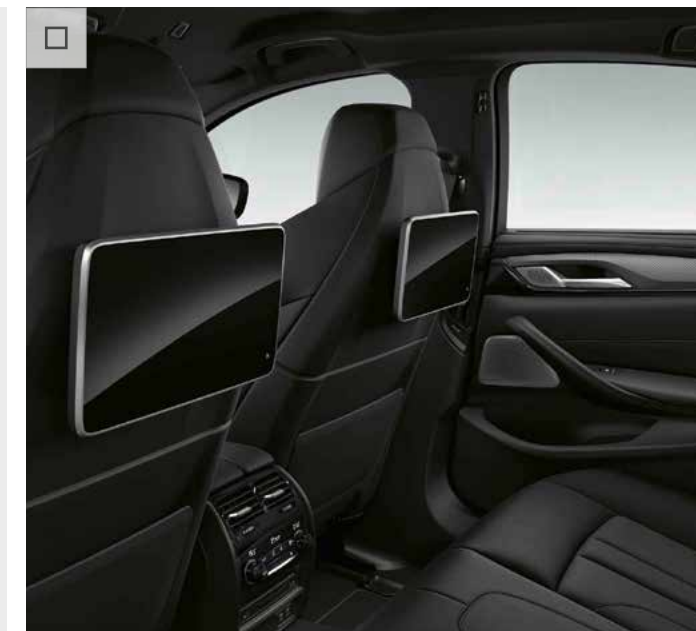
M Compound brakes in High-gloss Blue also available as a no cost alternative.



## REAR-SEAT ENTERTAINMENT PROFESSIONAL.

Rear-seat Entertainment Professional includes two separate 10.2" colour screens, that can be tilted, and a Blu-ray drive. This makes it possible to use the navigation system or the internet while on the road (with an existing mobile phone contract). Features remote control, USB port and ports for MP3 players, games consoles and headphones (including wireless headphones).

Exclusively available as part of Ultimate Pack and Entertainment Pack.



## DRIVING ASSISTANT PROFESSIONAL.

Driving Assistant Professional offers optimum comfort and maximum safety during monotonous or complex driving situations. It comprises:

- Cruise control with approach control
- Speed Limit Assist
- Emergency Stop Assist
- Automatic Speed Limit Assist
- Lane Change Assistant
- Crossing traffic Warning (front)
- Evasion Aid
- Crossroads Warning with city braking function
- Wrong-way Warning
- Traffic light recognition
- Steering and Lane Control Assistant
- Active Lane Guidance

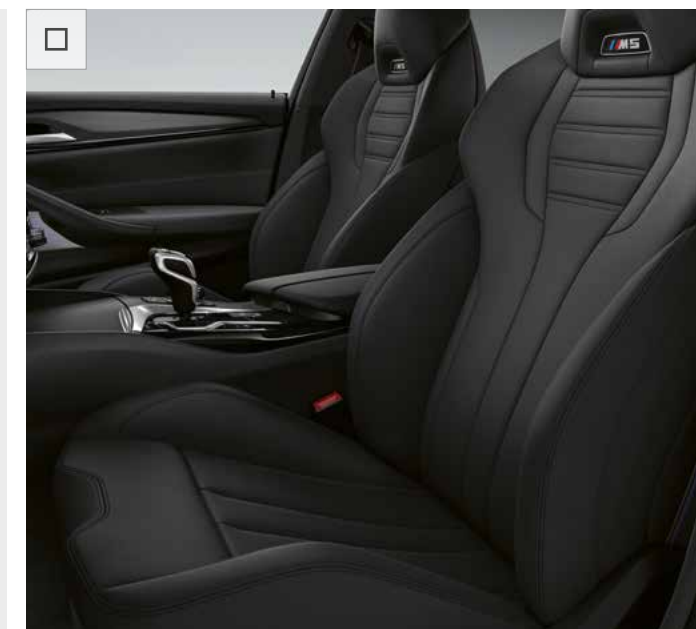
Exclusively available as part of Ultimate Pack and Technology Plus Pack.



## MESSAGE FUNCTION, FRONT.

The Massage function for driver and front passenger improves the physical wellbeing by stimulating or relaxing certain muscle groups. There are eight massage programmes each with three intensity levels for muscle activation and relaxation.

Available as part of Ultimate Pack and Comfort Plus Pack.



## M DRIVER'S PACKAGE.

The M Driver's Package increases the top speed from 155mph to 189mph (250km/h to 305km/h). The increased top speed is not available until the running-in inspection has been completed.

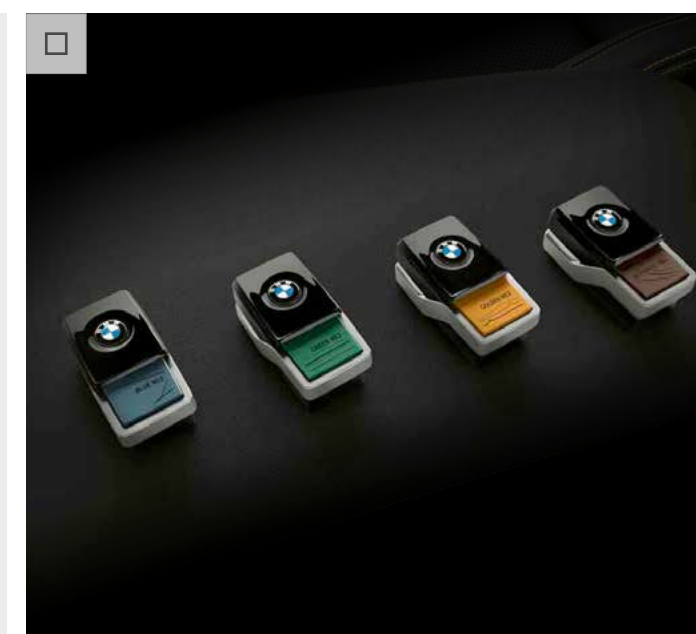
Exclusively available as part of Ultimate Pack and M Pro Pack.



## AMBIENT AIR PACKAGE.

At the push of a button, the Ambient Air package fills the interior of the car with a subtle, pleasant fragrance. A selection of fragrances are available, all specially composed for the vehicle. The starter kit contains two scents: Blue Suite No.1 and Golden Suite No.2.

Exclusively available as part of Ultimate Pack and Comfort Plus Pack.



## WHEELS & TYRES.

20" M LIGHT ALLOY Y-SPOKE STYLE 810 M WHEELS, BICOLOUR.

20" M light alloy Double-spoke style 810 M wheels, Bicolour with mixed tyres, front 9.5J x 20 with 275/35 R20 tyres, rear 10.5J x 20 with 285/35 R20 tyres.

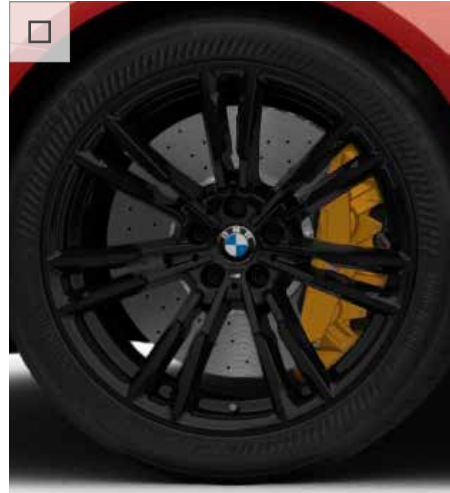
Shown here with optional M Carbon ceramic brakes with Gold calipers.



20" M LIGHT ALLOY DOUBLE-SPOKE STYLE 706 M WHEELS, JET BLACK.

20" M light alloy Double-spoke style 706 M wheels, Jet Black with mixed tyres, front 9.5J x 20 with 275/35 R20 tyres, rear 10.5J x 20 with 285/35 R20 tyres.

Shown here with optional M Carbon ceramic brakes with Gold calipers.



20" M LIGHT ALLOY Y-SPOKE STYLE 789 M WHEELS, BICOLOUR.

20" M light alloy Y-spoke style 789 M wheels, Bicolour with mixed tyres, front 9.5J x 20 with 275/35 R20 tyres, rear 10.5J x 20 with 285/35 R20 tyres.

Shown here with optional M Carbon ceramic brakes with Gold calipers.



# TECHNICAL INFORMATION.



M5 Competition

Power output (hp)	625
0-62mph / 0-100km/h (secs)	3.3
Fuel consumption – combined (mpg)*	25.2-25.4
Fuel consumption – combined (l/100km)*	11.2-11.1
CO <sub>2</sub> emissions – combined (g/km)*	255-252

\* = Figures shown are for comparability purposes; only compare fuel consumption and CO<sub>2</sub> figures with other cars tested to the same technical procedures. These figures may not reflect real life driving results, which will depend upon a number of factors including the accessories fitted (post-registration), variations in weather, driving styles and vehicle load. The CO<sub>2</sub> figures shown above have been determined according to the WLTP test. The CO<sub>2</sub> figures were previously based on the NEDC equivalent.

# OPTIONAL EQUIPMENT.



M5 Competition

## BMW EFFICIENT DYNAMICS

Auto Start-Stop	■
Brake Energy Regeneration	■
High-precision direct injection	■
Individual BMW EfficientDynamics features may be excluded, depending on the optional equipment chosen. Your BMW Retailer will be pleased to provide you with more information.	

## PAINTWORK

Metallic Available in Black Sapphire, Bluestone, Brands Hatch Grey, Donington Grey <sup>1</sup> , Marina Bay Blue, Motegi Red or Snapper Rocks Blue	□
Non-metallic Available in Alpine White	■
BMW Individual Available in Alvide Grey, Aventurine Red or Tanzanite Blue	□
BMW Individual Special request paintwork <sup>1</sup>	□

## UPHOLSTERY

Full Merino leather Available in Black	■
Available in Aragon Brown, Black with contrast stitching in Midrand Beige or Silverstone	□
BMW Individual Full Merino leather Available in Smoke White or Tartufo	□

## INTERIOR TRIMS

Aluminium Carbon structure with Pearl Chrome highlight	■
Aluminium Carbon structure dark with dark Chrome highlight	□
Finewood Finline Ridge with Pearl Chrome highlight	□

## BMW INDIVIDUAL INTERIOR TRIM

Piano Black	□
-------------	---

<sup>1</sup> = The function of Lane Change Assistant, as part of Driving Assistant Professional, will be deactivated when ordered in combination with Donington Grey metallic or BMW Individual Special request paintwork.



M5 Competition

## PACKAGES

Packages provide an intelligent selection of individual options at a lower combined price, as well as contributing to the resale value of the vehicle. Further options can still be specified even when a package is chosen.

<p><b>COMFORT PLUS PACK</b> Comprises:</p> <ul style="list-style-type: none"> <li>- Active seat ventilation, front</li> <li>- Ambient Air package</li> <li>- Massage function, front</li> <li>- Seat heating, front and rear</li> <li>- Soft close doors</li> <li>- Steering wheel heating</li> </ul>	<input type="checkbox"/>
<p><b>ENTERTAINMENT PACK</b> Comprises:</p> <ul style="list-style-type: none"> <li>- Rear-seat Entertainment Professional</li> <li>- TV Function Plus</li> </ul>	<input type="checkbox"/>
<p><b>M PRO PACK</b> Comprises:</p> <ul style="list-style-type: none"> <li>- M Carbon ceramic brakes<sup>1</sup></li> <li>- M Driver's Package<sup>2</sup></li> </ul>	<input type="checkbox"/>
<p><b>TECHNOLOGY PLUS PACK</b> Comprises:</p> <ul style="list-style-type: none"> <li>- Driving Assistant Professional</li> <li>- Bowers &amp; Wilkins Diamond Surround Sound System</li> </ul>	<input type="checkbox"/>
<p><b>ULTIMATE PACK</b> Comprises:</p> <ul style="list-style-type: none"> <li>- Active seat ventilation, front</li> <li>- Ambient Air package</li> <li>- BMW Laserlights</li> <li>- Bowers &amp; Wilkins Diamond Surround Sound System</li> <li>- Driving Assistant Professional</li> <li>- Massage function, front</li> <li>- M Carbon ceramic brakes<sup>1</sup></li> <li>- M Carbon engine cover</li> <li>- M Driver's Package<sup>2</sup></li> <li>- Rear-seat Entertainment Professional</li> <li>- Seat heating, front and rear</li> <li>- Soft close doors</li> <li>- Steering wheel heating</li> <li>- TV Function Plus</li> </ul>	<input type="checkbox"/>
<p><b>VISIBILITY PACK</b> Comprises:</p> <ul style="list-style-type: none"> <li>- BMW Laserlights</li> </ul>	<input type="checkbox"/>

<sup>1</sup> = Dependent on conditions and usage, features specific to the materials used can lead to operational noises particularly in wet conditions just before the vehicle comes to a halt. The impact of moisture and road salt can cause the braking action to be equivalent to a conventional brake system. This can for a short time be experienced as a reduction in braking action and can be balanced out by greater pressure on the pedal where necessary. <sup>2</sup> = Increase of top speed not available until the running in inspection has been completed.



M5 Competition

## SAFETY AND TECHNOLOGY

<p>Driving Assistant Comprises:</p> <ul style="list-style-type: none"> <li>- Approach Control Warning with city braking function</li> <li>- Crossing-traffic Warning, rear</li> <li>- Lane Change Warning</li> <li>- Lane Departure Warning</li> <li>- Rear collision prevention</li> <li>- Speed Limit Info with no-overtaking indicator</li> </ul>	<p>■</p>
<p>Driving Assistant Plus Comprises:</p> <ul style="list-style-type: none"> <li>- Active Lane guidance</li> <li>- Automatic Speed Limit Assist</li> <li>- Crossing traffic Warning, front</li> <li>- Crossroads Warning with city braking function</li> <li>- Cruise control with approach control</li> <li>- Emergency Stop Assist</li> <li>- Evasion Aid</li> <li>- Lane Change Assistant</li> <li>- Speed Limit Assist</li> <li>- Steering and Lane Control Assistant</li> <li>- Traffic light recognition</li> <li>- Wrong-way Warning</li> </ul> <p>Only with Ultimate Pack / Technology Plus Pack</p>	<p>□</p>
<p>Drive Recorder<sup>1</sup> Comprises:</p> <ul style="list-style-type: none"> <li>- Event recorder</li> <li>- Crash recorder</li> </ul>	<p>■</p>
<p>Parking Assistant Plus Comprises:</p> <ul style="list-style-type: none"> <li>- Active Park Distance Control</li> <li>- Lateral parking aid</li> <li>- Park Distance Control</li> <li>- Parking Assistant</li> <li>- Rear-view camera</li> <li>- Remote 3D View</li> <li>- Surround view</li> </ul>	<p>■</p>

## EXTERIOR EQUIPMENT

M Compound brakes, High-gloss Red	■
M Compound brakes, High-gloss Black	□
M Compound brakes, High-gloss Blue	□
Trailer tow bar	□

Only with = these options must be ordered together. <sup>1</sup> = Please note that heavy accidents with hard disc damages or camera damages are owing to circumstances where videos may not be recorded or saved.



M5 Competition

## AUDIO & COMMUNICATION

BMW Emergency Call <sup>1</sup>	■
BMW Live Cockpit Professional Comprises: <ul style="list-style-type: none"> <li>- 12.3" Control Display with Touch Functionality</li> <li>- 12.3" Digital Instrument Display</li> <li>- BMW Intelligent Personal Assistant<sup>2</sup></li> <li>- BMW Operating System 7.0</li> <li>- iDrive Controller with Touch Function</li> <li>- Intelligent Functionalities<sup>2</sup></li> <li>- Remote Software Upgrade<sup>2</sup></li> </ul> For further details, see <a href="#">BMW ConnectedDrive</a>	■
BMW Online Services <sup>2,3</sup> Comprises: <ul style="list-style-type: none"> <li>- BMW Apps</li> <li>- BMW Online Services</li> <li>- Last State Call<sup>1,2</sup></li> <li>- USB and Over-the-air Map Updates</li> </ul>	■
BMW TeleServices <sup>1</sup> Connected Package Professional <sup>2,3</sup> Comprises: <ul style="list-style-type: none"> <li>- Concierge Services</li> <li>- Connected Music</li> <li>- Connected Navigation</li> <li>- Connected Parking</li> <li>- Connected Teaser<sup>4,5</sup></li> <li>- In-Car Experiences</li> <li>- Real Time Traffic Information</li> <li>- Remote 3D View</li> <li>- Remote Services</li> <li>- Smartphone Integration<sup>1,6</sup></li> </ul> For further details, see <a href="#">BMW ConnectedDrive</a>	■

<sup>1</sup> = Available and active without runtime limitations. Usage cannot be guaranteed permanently due to potential future technical developments (of the Service availability and/or Smartphone compatibility/operating systems). <sup>2</sup> = Requires a free BMW ConnectedDrive account. <sup>3</sup> = Active for 3 years, renewable thereafter at an additional cost. <sup>4</sup> = Includes BMW Music for a three month trial. For further details, see BMW ConnectedDrive. <sup>5</sup> = Available and active for three months. Can be extended or renewed thereafter at an extra cost. <sup>6</sup> = Functions using a data connection will use data from the SIM card in the phone. Additional data charges may be applied by the mobile network provider. Compatibility and functions may vary due to the make and model year of the phone and the version of software installed on it.





M5 Competition

LIGHT ALLOY WHEELS



20" M Double-spoke style 706 M, Jet Black<sup>1</sup>

□



20" M Double-spoke style 810 M, Bicolour

□



20" M Y-spoke style 789 M, Bicolour<sup>1</sup>

■



READY TO TAKE THE NEXT STEP?

